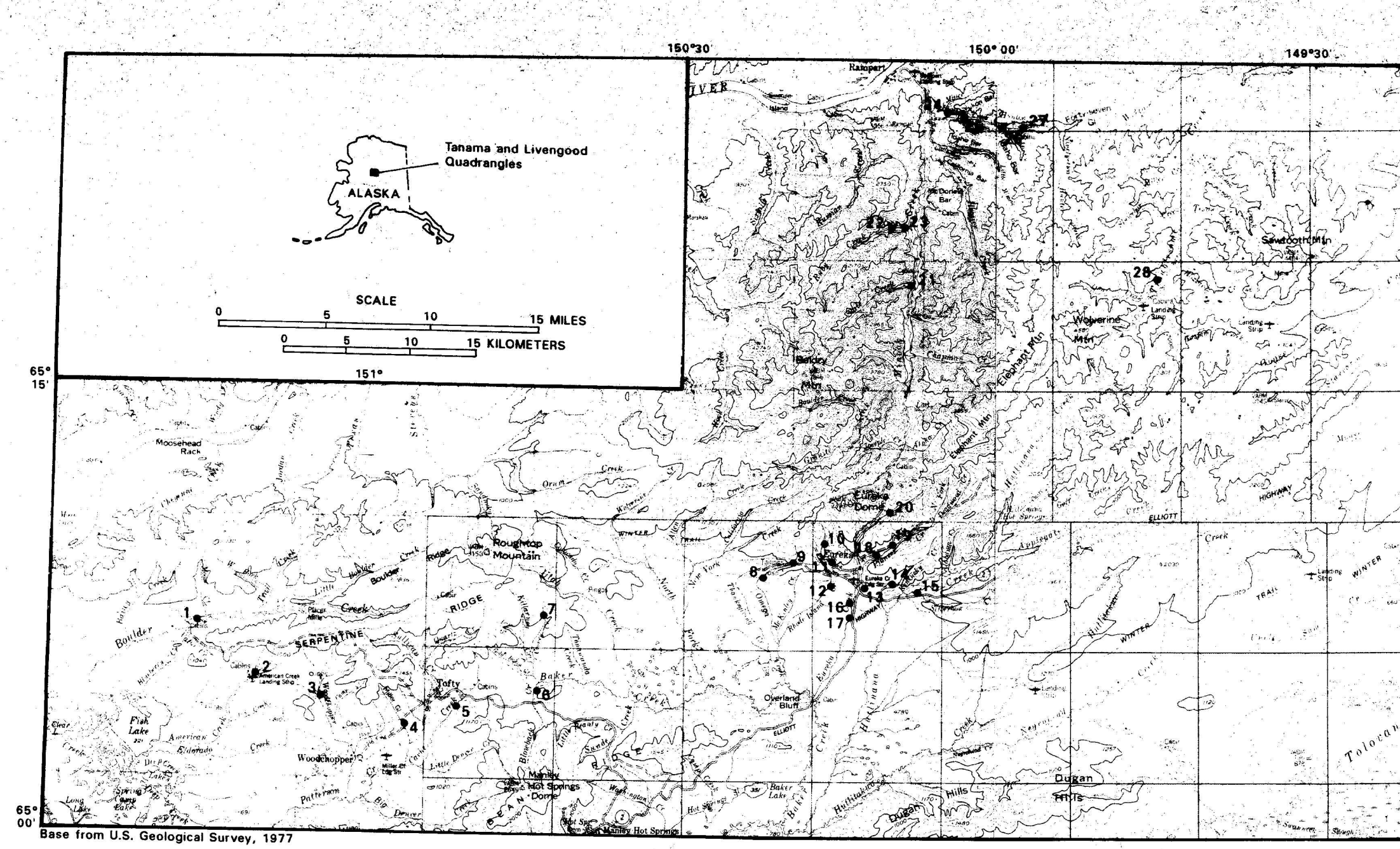
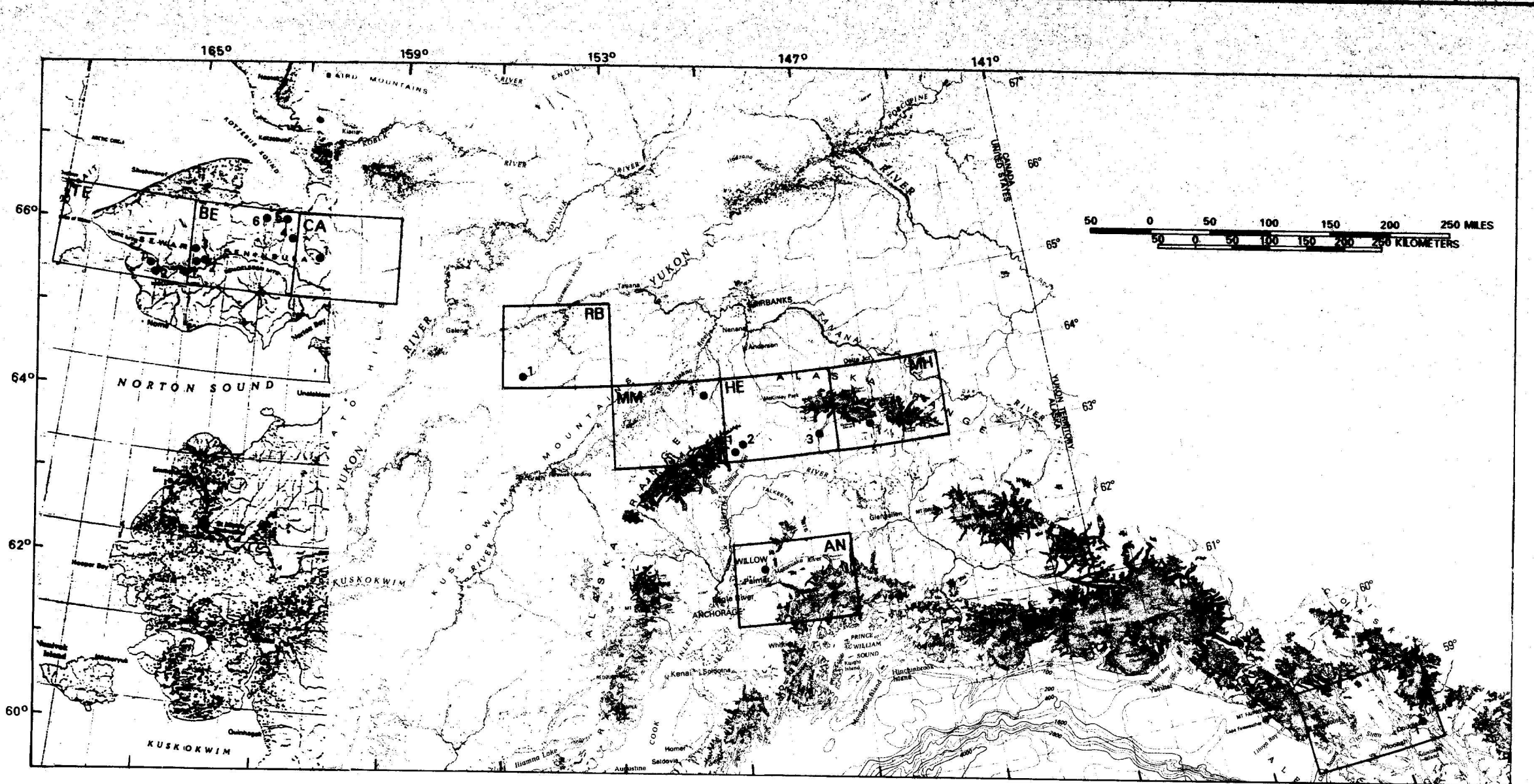


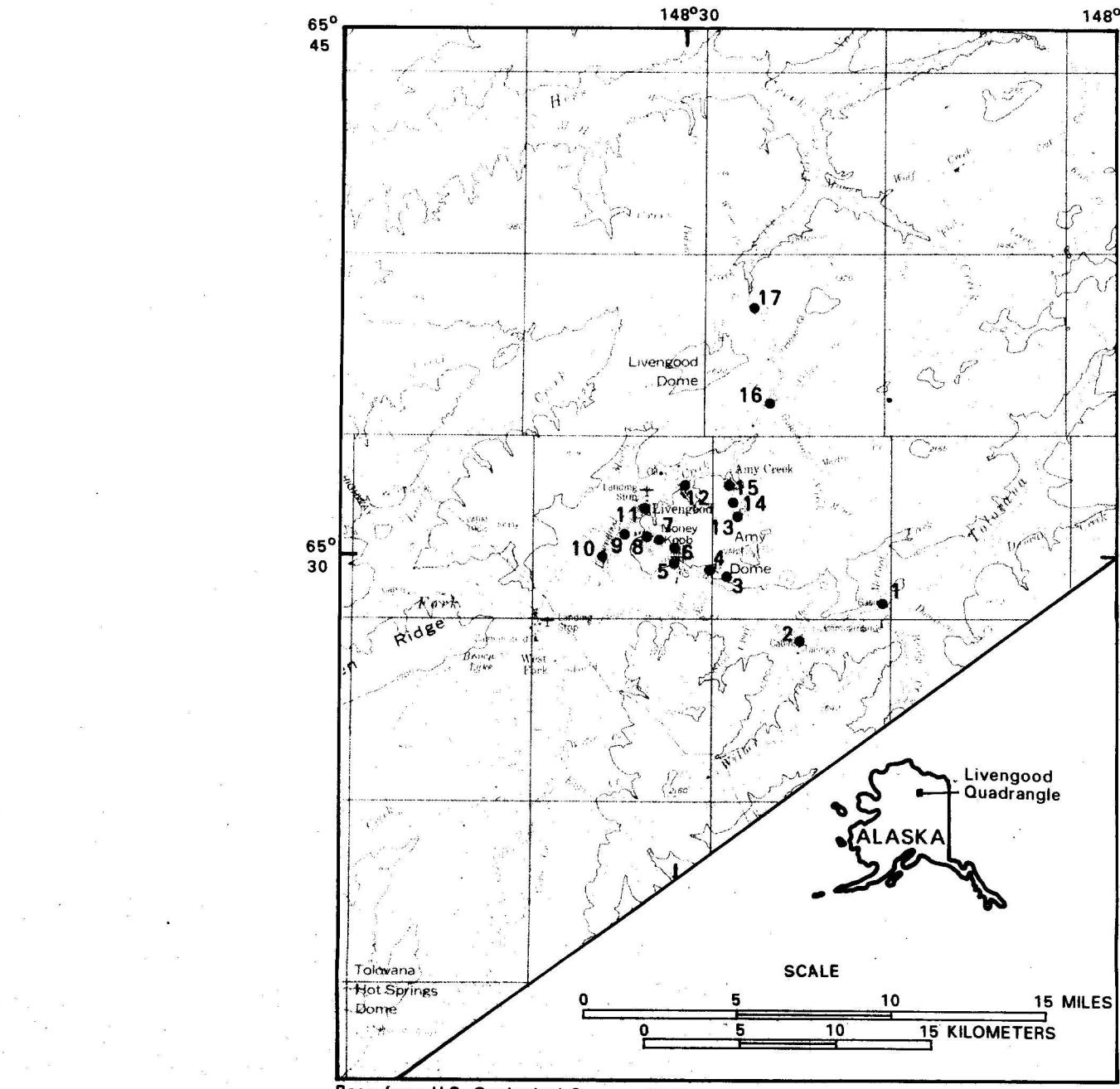
1- LOCALITIES OF SAMPLES FROM THE KOYUKUK-CHANDALAR MINING DISTRICT, WISEMAN AND CHANDALAR QUADRANGLES, ALASKA



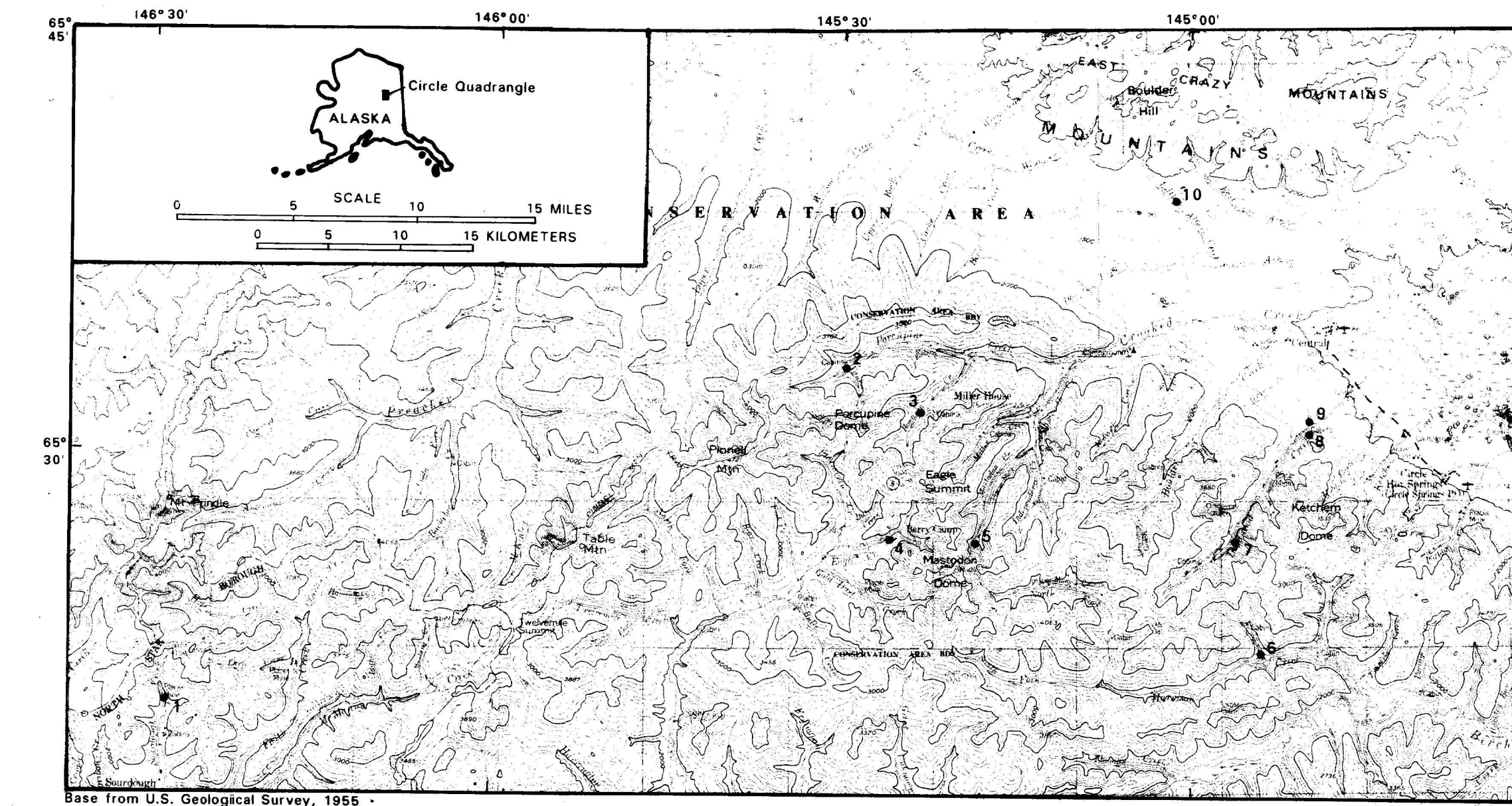
2- LOCALITIES OF SAMPLES FROM THE MANLEY HOT SPRINGS, TOFTY, EUREKA, AND RAMPART MINING DISTRICTS, TANAMA AND LIVELIHOOD QUADRANGLES, ALASKA



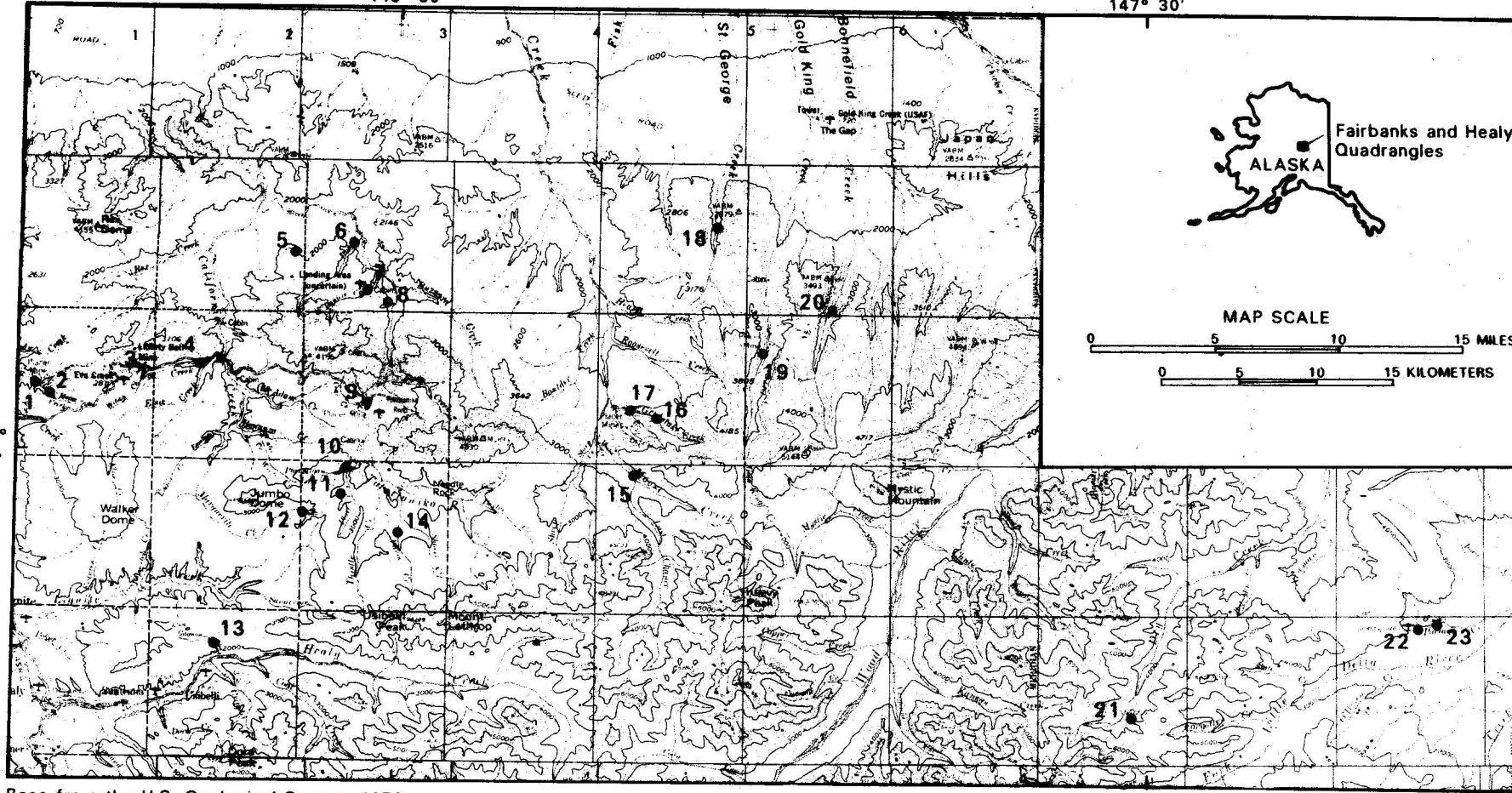
9- LOCALITIES OF SAMPLES FROM ANCHORAGE (AN), BENDELEBEN (BE), CANDLE (CA), HEALY (HE) JUNEAU (JU), MT. HAYES (MH), MT. MCKINLEY (MM), RUBY (RB), AND TELLER (TE) QUADRANGLES, ALASKA



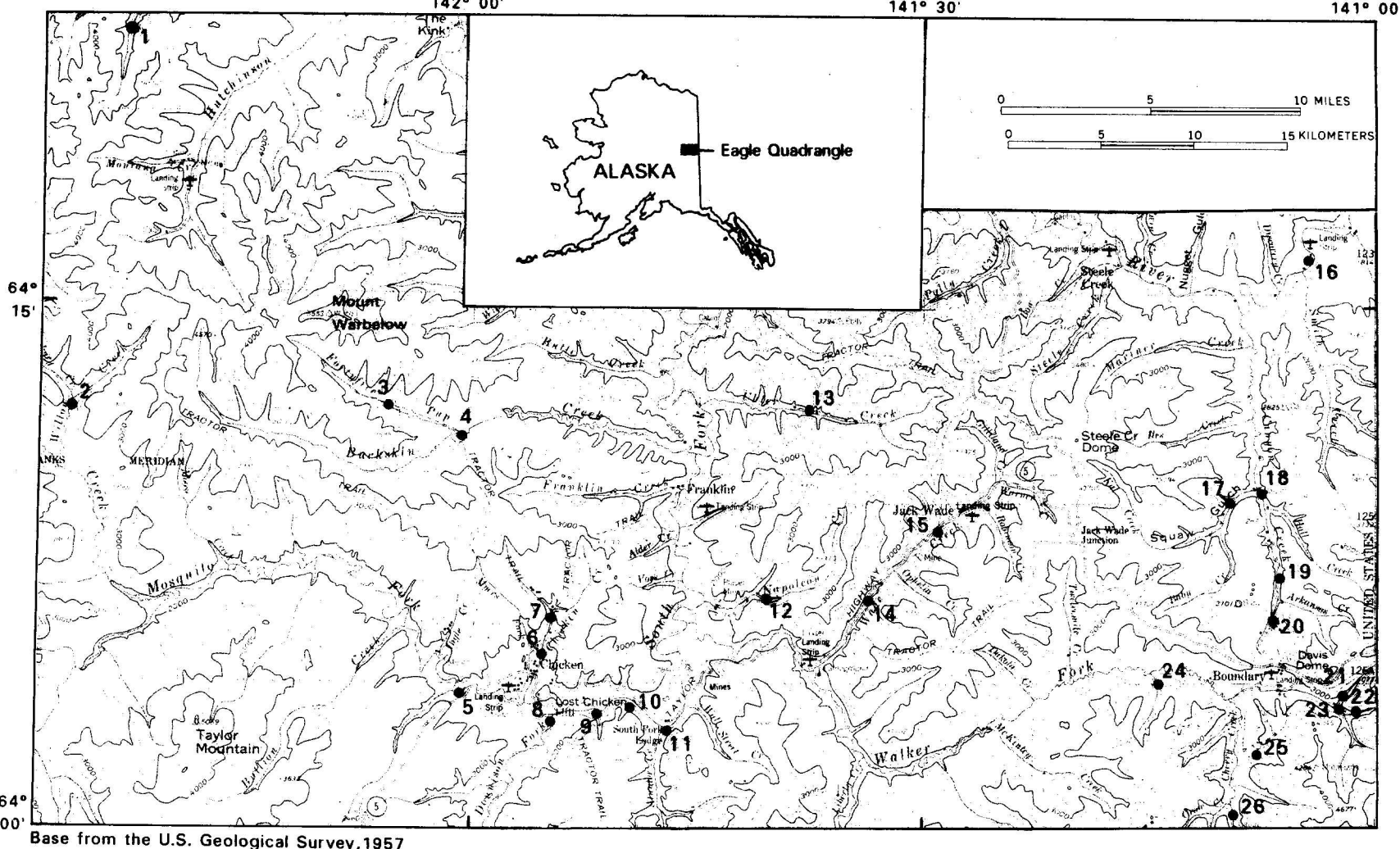
3- LOCALITIES OF SAMPLES FROM THE TOLOVANA MINING DISTRICT, LIVELIHOOD QUADRANGLE, ALASKA



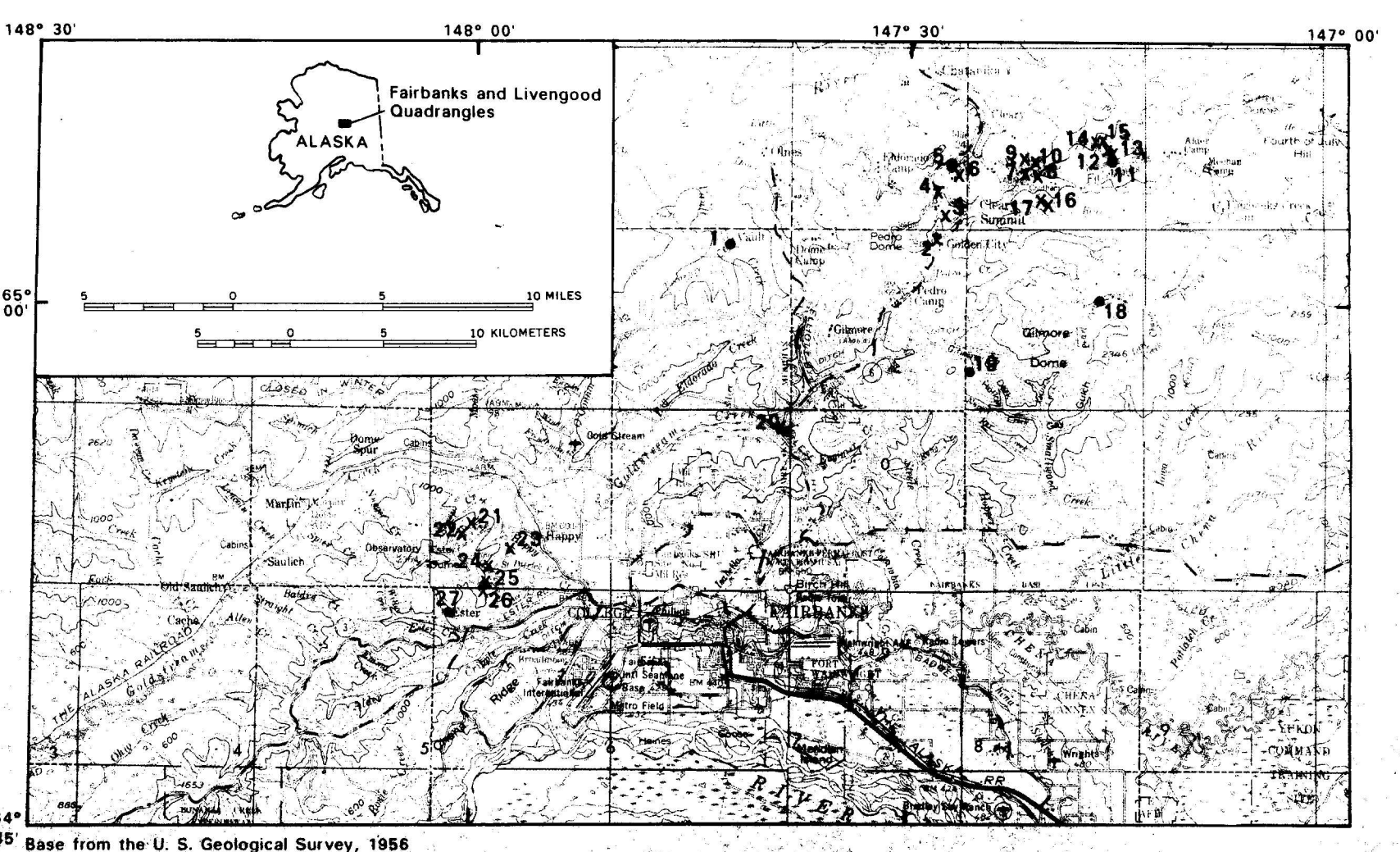
4- LOCALITIES OF SAMPLES FROM THE CIRCLE MINING DISTRICT, CIRCLE QUADRANGLE, ALASKA



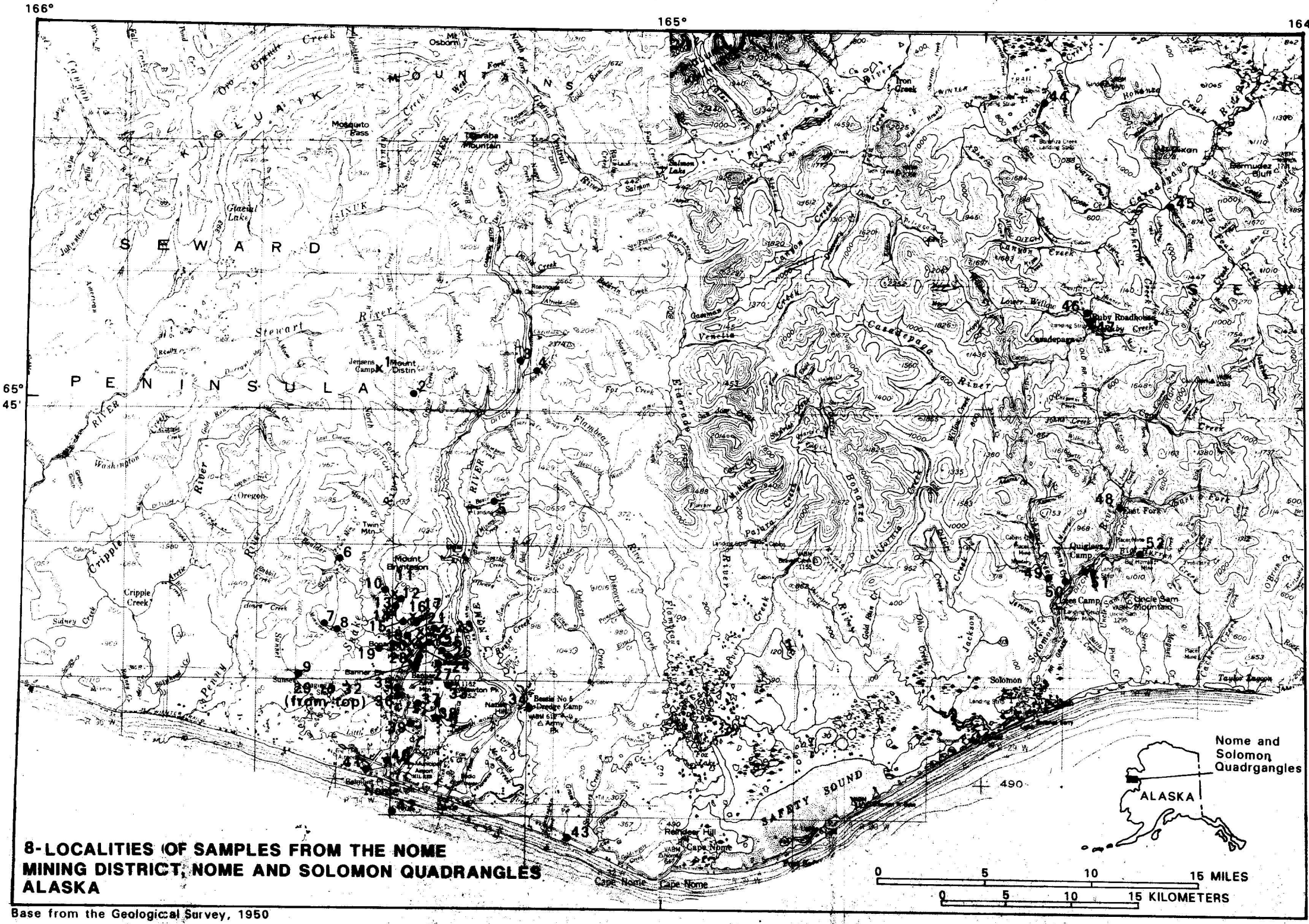
6- LOCALITIES OF SAMPLES FROM BONFIELD MINING DISTRICT FAIRBANKS AND HEALY QUADRANGLES, ALASKA



5- LOCALITIES OF SAMPLES FROM THE FORTY-MILE MINING DISTRICT EAGLE QUADRANGLE, ALASKA



7- LOCALITIES OF SAMPLES FROM THE FAIRBANKS MINING DISTRICT, FAIRBANKS AND LIVELIHOOD QUADRANGLES, ALASKA



8- LOCALITIES OF SAMPLES FROM THE NOME MINING DISTRICT, NOME AND SOLOMON QUADRANGLES, ALASKA

Index for use with Tables 2 and 3 for site, locality name, and mining district(s) and (or) quadrangle(s) for platinum-group elements from samples of native gold, stibnite concentrates or from pan concentrates, and mineralized rock samples, Alaska

Site	Locality name	Site	Locality name
1	Hammond River, 1, Koyukuk-Chandalar mining district	1	Vault Creek
2	Swift Creek	2	Stumpy Gulch, vein
3	Hermosa Creek	3	Pedro Lode
4	Nolan Creek, above confluence of Faye Creek	4	Meribou mine
5	Archibald Creek	5	Clary Creek, upper
6	Selth Creek	6	Clary Creek, lower
7	Washington Creek	7	Christina Vein
8	Conglomerate Creek	8	McClarty mine
9	Fortunate mine	9	American Eagle Vein
10	Twelve Mile Creek, 1,000' below confluence of West Fork and Twelve Mile Creek	10	Meripol mine
11	Chapman Creek	11	Straight Moose Creek
12	Greice Creek	12	Hy Tu mine, tailings
13	Pig Creek	13	Blue Bow Lode
14	Manley Hot Springs, Tofty, Eureka, and Rampart mining districts	14	H' Tu mine
15	Rainbow Lode	15	Raybow Lode
16	Clare No. 2	16	Bear Creek, Blueberry vein
17	Bear Creek, Blueberry vein	17	Fish Creek
18	Fish Creek	18	Hill Creek
19	Hill Creek	19	Soldier Creek, lower
20	Soldier Creek, lower	20	Adler Lode
21	Adler Lode	21	Clippers mine
22	Clippers mine	22	Grant Mine
23	Grant Mine	23	St. Patrick Lode
24	St. Patrick Lode	24	Lookout Shear Zone
25	Lookout Shear Zone	25	Ready Bullion Creek
26	Ready Bullion Creek	26	
27		27	
28		28	
29		29	
30		30	
31		31	
32		32	
33		33	
34		34	
35		35	
36		36	
37		37	
38		38	
39		39	
40		40	
41		41	
42		42	
43		43	
44		44	
45		45	
46		46	
47		47	
48		48	
49		49	
50		50	
51		51	
52		52	
53		53	
54		54	
55		55	
56		56	
57		57	
58		58	
59		59	
60		60	
61		61	
62		62	
63		63	
64		64	
65		65	
66		66	
67		67	
68		68	
69		69	
70		70	
71		71	
72		72	
73		73	
74		74	
75		75	
76		76	
77		77	
78		78	
79		79	
80		80	
81		81	
82		82	
83		83	
84		84	
85		85	
86		86	
87		87	
88		88	
89		89	
90		90	
91		91	
92		92	
93		93	
94		94	
95		95	
96		96	
97		97	
98		98	
99		99	
100		100	

Explanation
 * Lode sample locality
 • Placer sample locality

MAPS SHOWING LOCATIONS OF DETECTED PLATINUM-GROUP ELEMENTS FROM SOME GOLD MINING DISTRICTS OF ALASKA

By
**John B. Cathrall, Robert R. Carlson, John C. Antweiler,
and Elwin L. Mosier**

1991

This map is preliminary and has not been edited or reviewed for conformity with U.S. Geological Survey editorial standards.