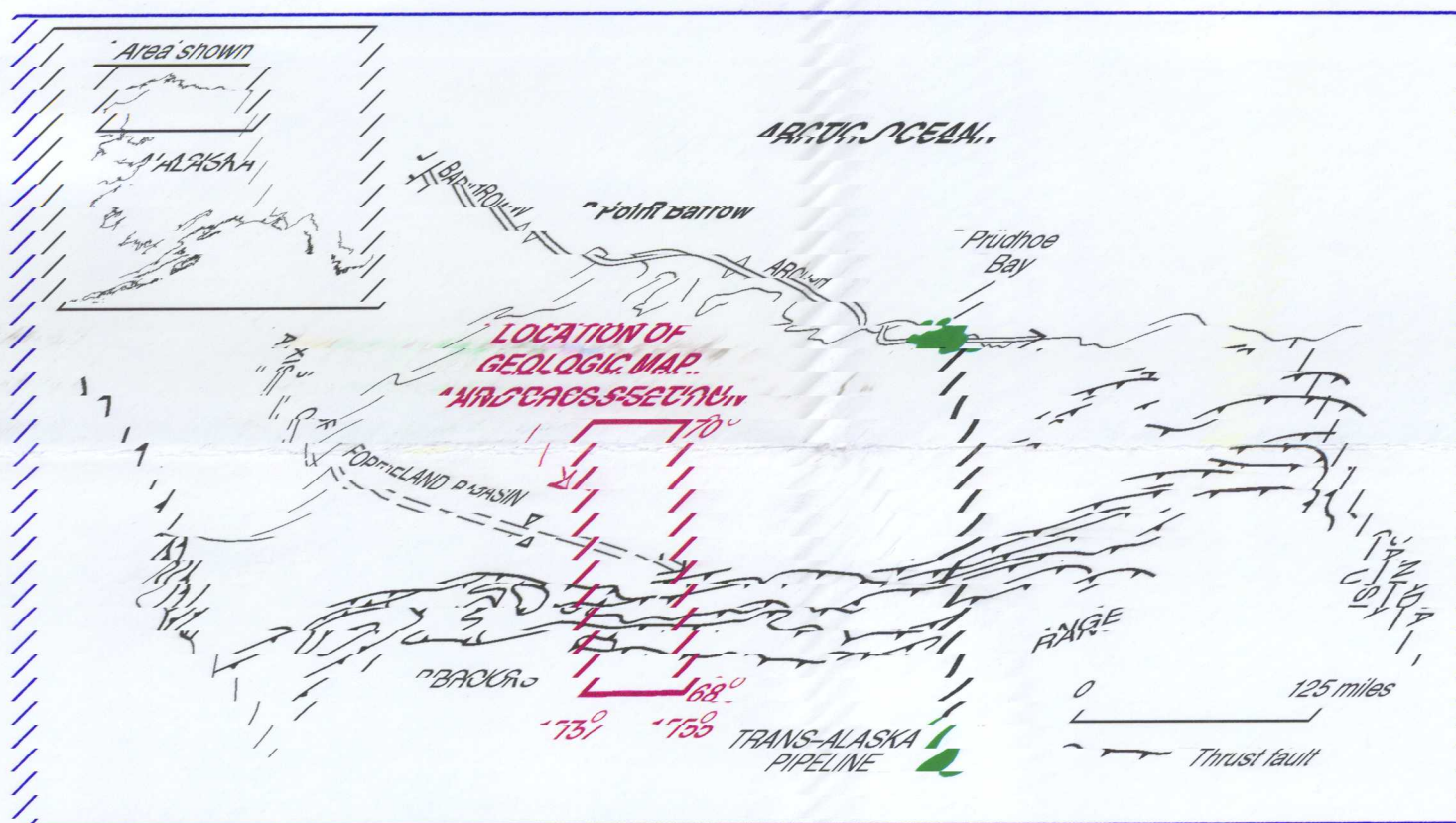
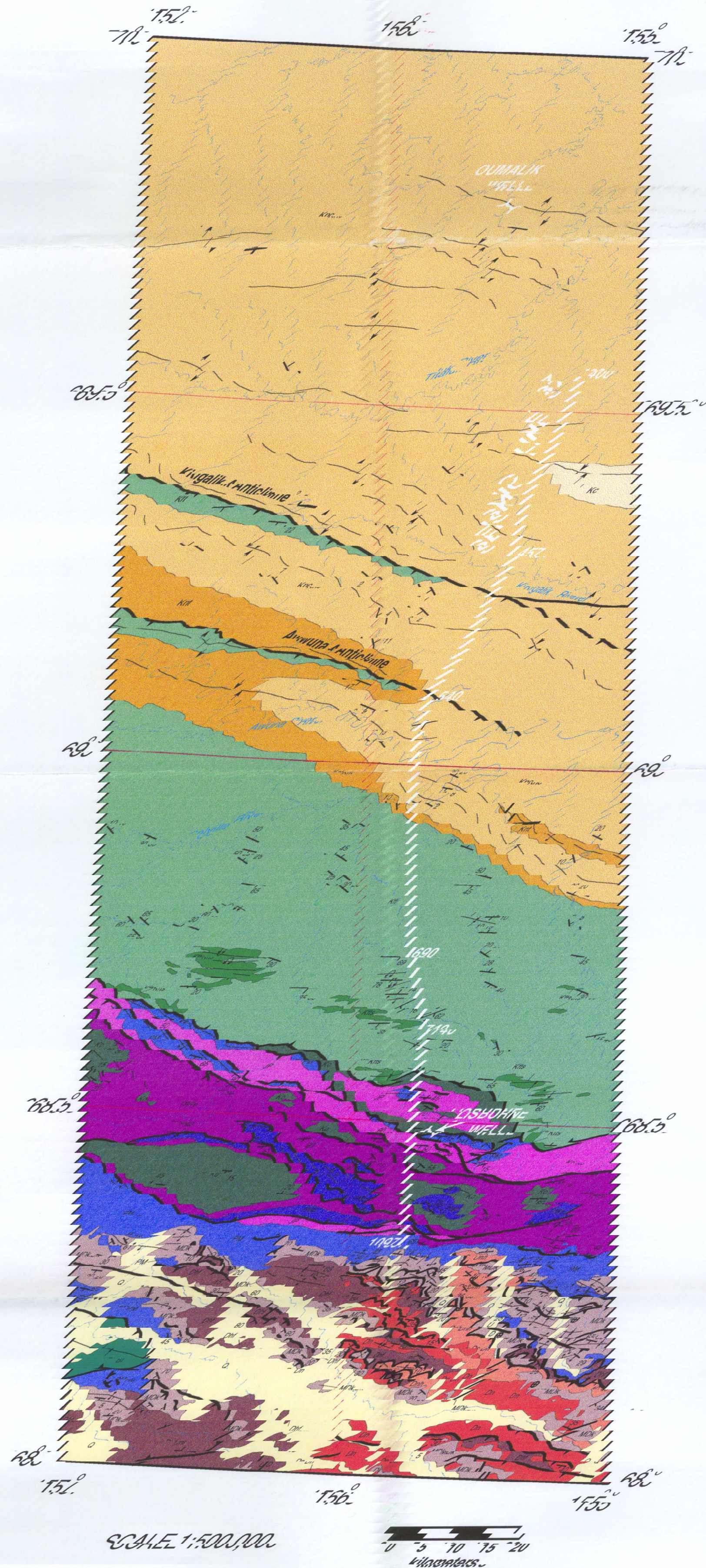


1. GEOLOGIC MAP OF PARTS OF THE KILLIK RIVER, HONWARD PASS, KIKRIK RIVER, AND LOUKOUT RIVER QUADRANGLES, ALASKA.



LEGEND

- Albian to Cenomanian sandstone, conglomerate, and coal of Nanushuk Group.
- Barreman (?) to early Albian Torok shale (N7) and Fortress Mountain sandstone and conglomerate (N6).
- Faded, calcareous, Devonian to Valanginian shale and argillaceous of Umiuktok formation.
- Jurassic to Permian (?) shales, limestone, and mudstone of Etivuk Group.
- Mississippian to Pennsylvanian dolomite, limestone, shale, and minor chert of Umiuktok and Nagaiak.
- Devonian to Triassic chert, limestone, and shale of Umiuktok and Nagaiak.
- Mississippian to Pennsylvanian chert, sandstone, and limestone of Umiuktok and Nagaiak.
- Upper Devonian sandstone and conglomerate of Kanavak Conglomerate.
- Upper Devonian sandstone and quartzite of Natak sandstone.
- Upper Devonian shale and sandstone of the Natak shales.
- Upper Devonian to Valanginian shales and shales sandstone, and shales.

Geology, stratigraphic column, and subsurface, compiled from:

Kristine, E., and Probst, P.A., 1986. Stratigraphic column and stratigraphic elements in the National Petroleum Reserve in Alaska, in USGS Professional Paper 7384, plate 9.1.

Lamm, E.H., 1981. Preliminary geologic map of the central Brooks Range, Alaska, USGS Open-File Report 81-24, scale 1:1,000,000.

Mull, C.G., Moore, T.E., Harris, E.E., and Tailleux, J.L., 1984. Geologic map of the Killik River quadrangle, Alaska, USGS Professional Paper 7384, scale 1:250,000.

Mull, C.G., and Wierdan, M.B., 1984. Generalized geologic map of the western Etivuk Mountains, central Brooks Range, Alaska, State of Alaska, USGS Professional Paper 7384, scale 1:250,000.

Tailleux, J.L., Ford, R.H., Jr., and Ertter, H.M., 1985. Devonian geology, maps of the Natak-Etivuk region, northern Alaska, USGS Open-File Report 85-20.

Tropea, J., 1980. Stratigraphic column, correlation, and final report, Petroleum Exploration of the National Petroleum Reserve in Alaska, 7914-7361, of the USGS, scale 1:300,000.

Webster, E.J., Fry, F.C., and Probst, P.A., 1984. Geologic map of the area of the Umiuktok and Nagaiak Rivers, Naval Petroleum Reserve No. 4, Alaska, USGS Report No. 16, 6 p. text and map.

Withington, C.L., and Truog, M.J., 1949. Geologic map of the area of the Kinglik and Awuna Rivers, Alaska, USGS Report No. 7, 10 p. text and map.

This report is preliminary and has not been reviewed for conformity with U.S. Geological Survey editorial standards or with the North American Stratigraphic Code. It is a product of Formations & Resources Program, and does not imply endorsement by the U.S. Government.

KINEMATICS AND SUBSIDENCE MODELING OF THE NORTH-CENTRAL BROOKS RANGE AND NORTH SLOPE OF ALASKA

By
Frances Ube, Kenneth J. Bink, Jimmie Trone, François Roure, and David C. Howell
1995.