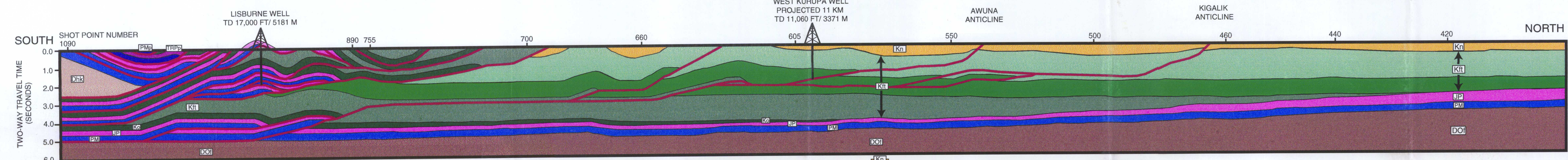
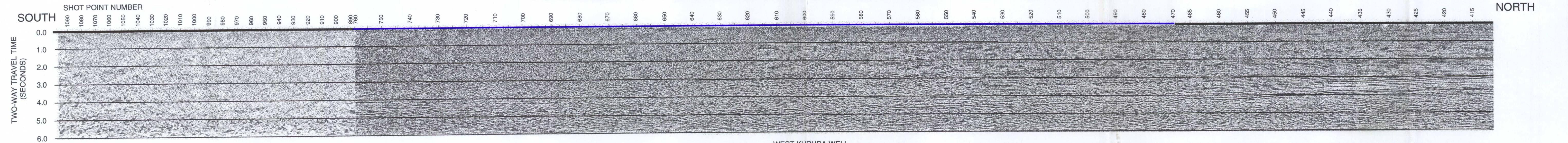


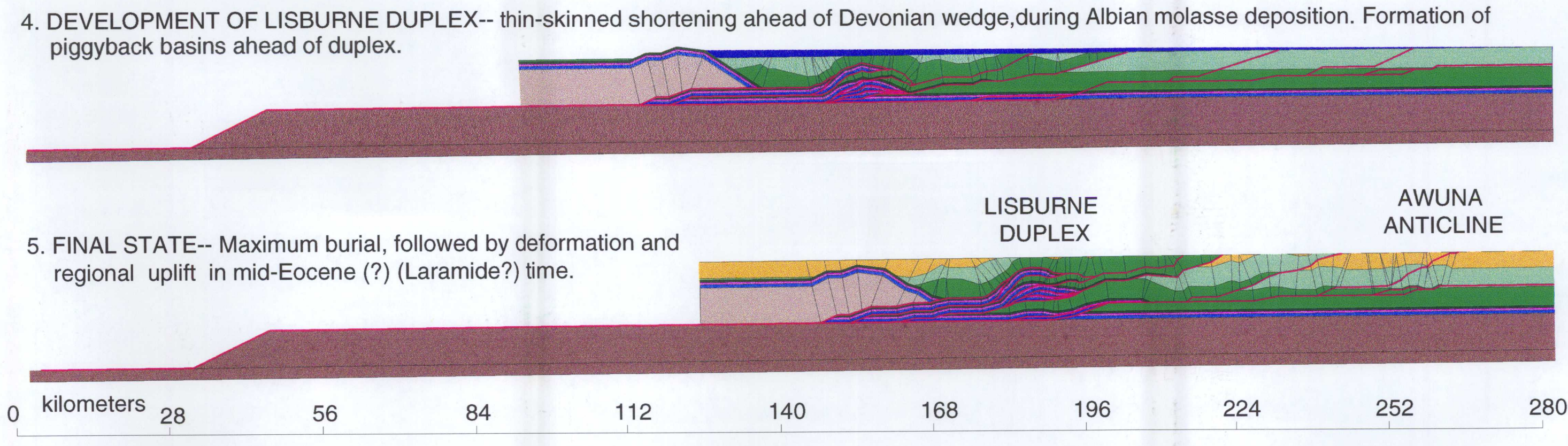
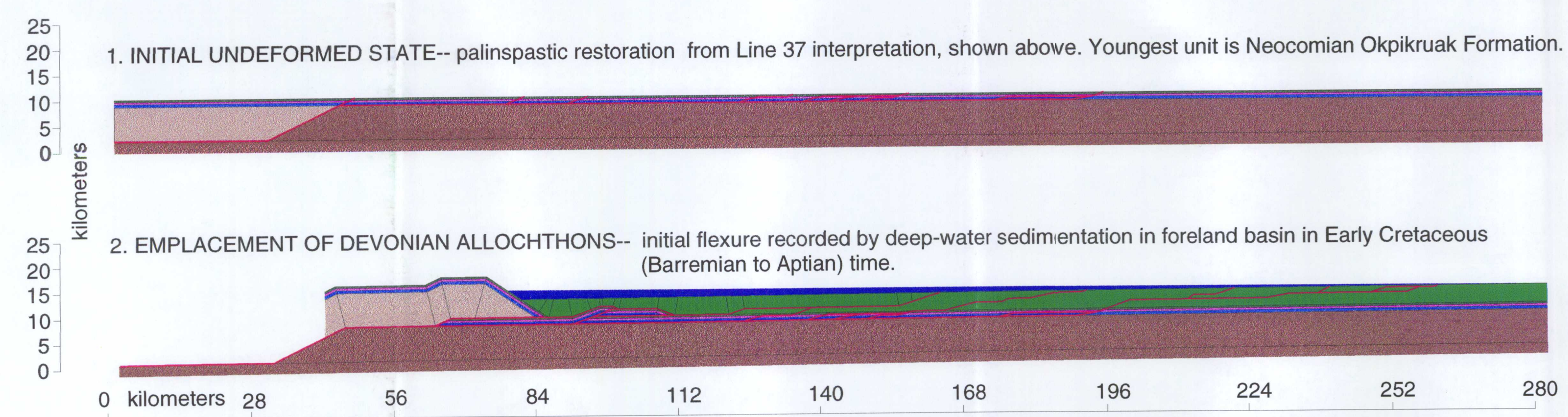
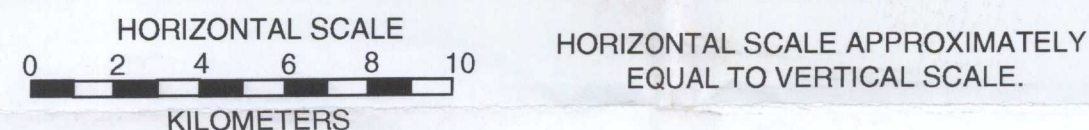
U.S. DEPARTMENT OF THE INTERIOR
U.S. GEOLOGICAL SURVEY

OPEN-FILE REPORT 95-823
SHEET 2 OF 3

II. SEISMIC INTERPRETATION OF LINE 37 AND FORWARD KINEMATIC MODEL OF THE FOLD- AND THRUST-BELT



- Devonian shale and sandstone of Kanayut and Hunt Fork formations.
- Ordovician through Devonian low-grade metasedimentary rocks of Franklinian sequence.
- Pennsylvanian to Triassic chert, mudstone, and shale of Picnic Creek allochthon (Imnaitchiak chert).
- Mississippian to Pennsylvanian chert, sandstone, and limestone of Picnic Creek allochthon (Akmalik chert and Kurupa sandstone).
- Early Cretaceous (Berriasian to Valanginian) shale and greywacke of Okpikruak Formation.
- Jurassic to Permian chert, shale, limestone, and mudstone of Etivluk Group.
- Mississippian to Pennsylvanian dolostone, limestone, shale, and minor chert of Lisburne Group and Kayak shale.
- Albian to Cenomanian sandstone, conglomerate, and coal of Nanushuk Group.
- Barremian (?) to Albian shale, sandstone, and conglomerate of Fortress Mountain and Torok Formations. Lower, middle, and upper units shown.



Models generated with Thrustpack software, developed by the Institut Français du Pétrole, and used courtesy of IFP, Chevron, Instituto Mexicano del Petróleo, and INTEVEP.

KINEMATIC AND SUBSIDENCE MODELING OF THE NORTH-CENTRAL BROOKS RANGE AND NORTH SLOPE OF ALASKA
By
Frances Cole, Kenneth J. Bird, Jaime Toro, François Roure, and David G. Howell
1995

This report is preliminary and has not been reviewed for conformity with U.S. Geological Survey editorial standards or with the North American Stratigraphic Code. Any use of trade, product, or firm names is for descriptive purposes only and does not imply endorsement by the U.S. Government.