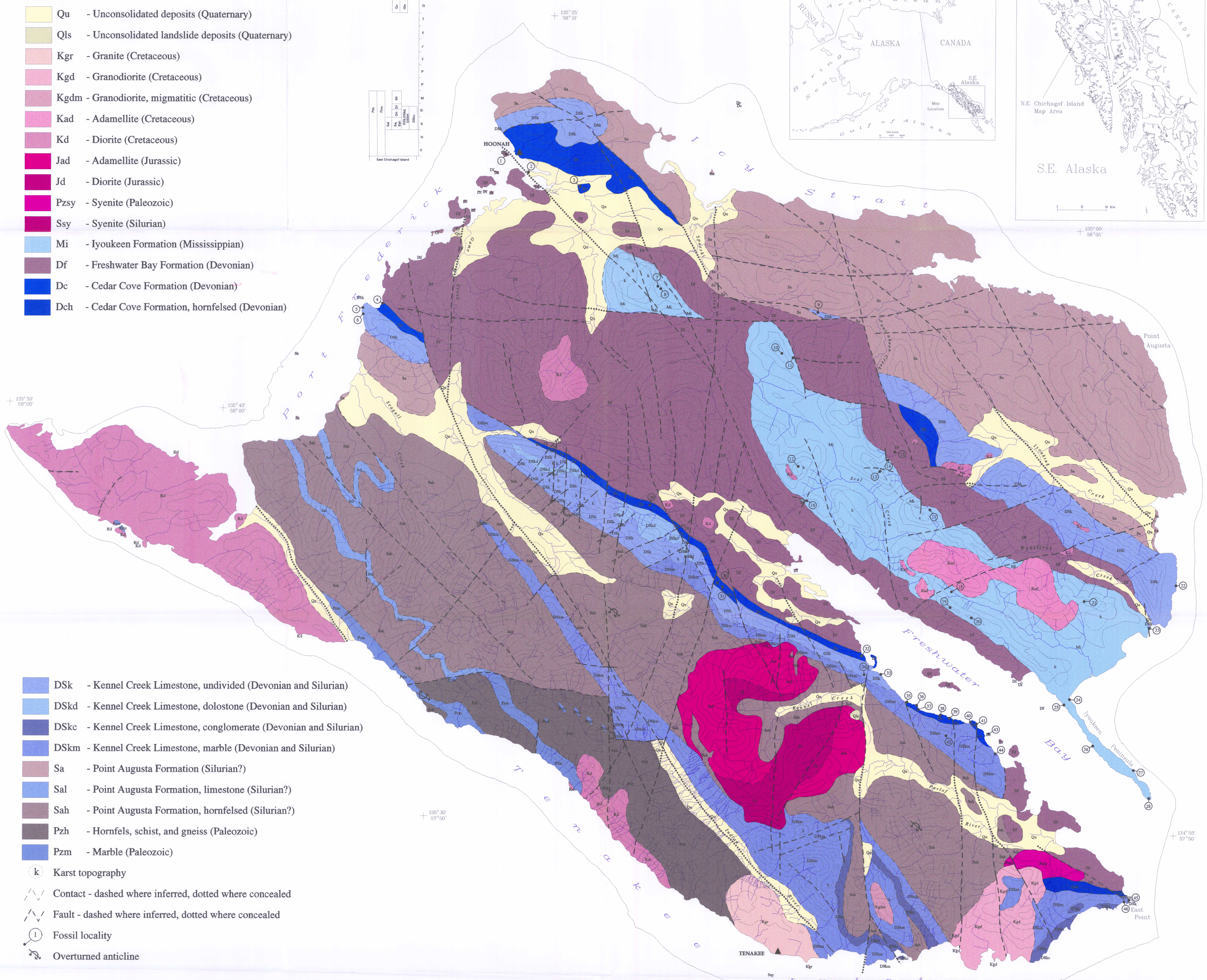
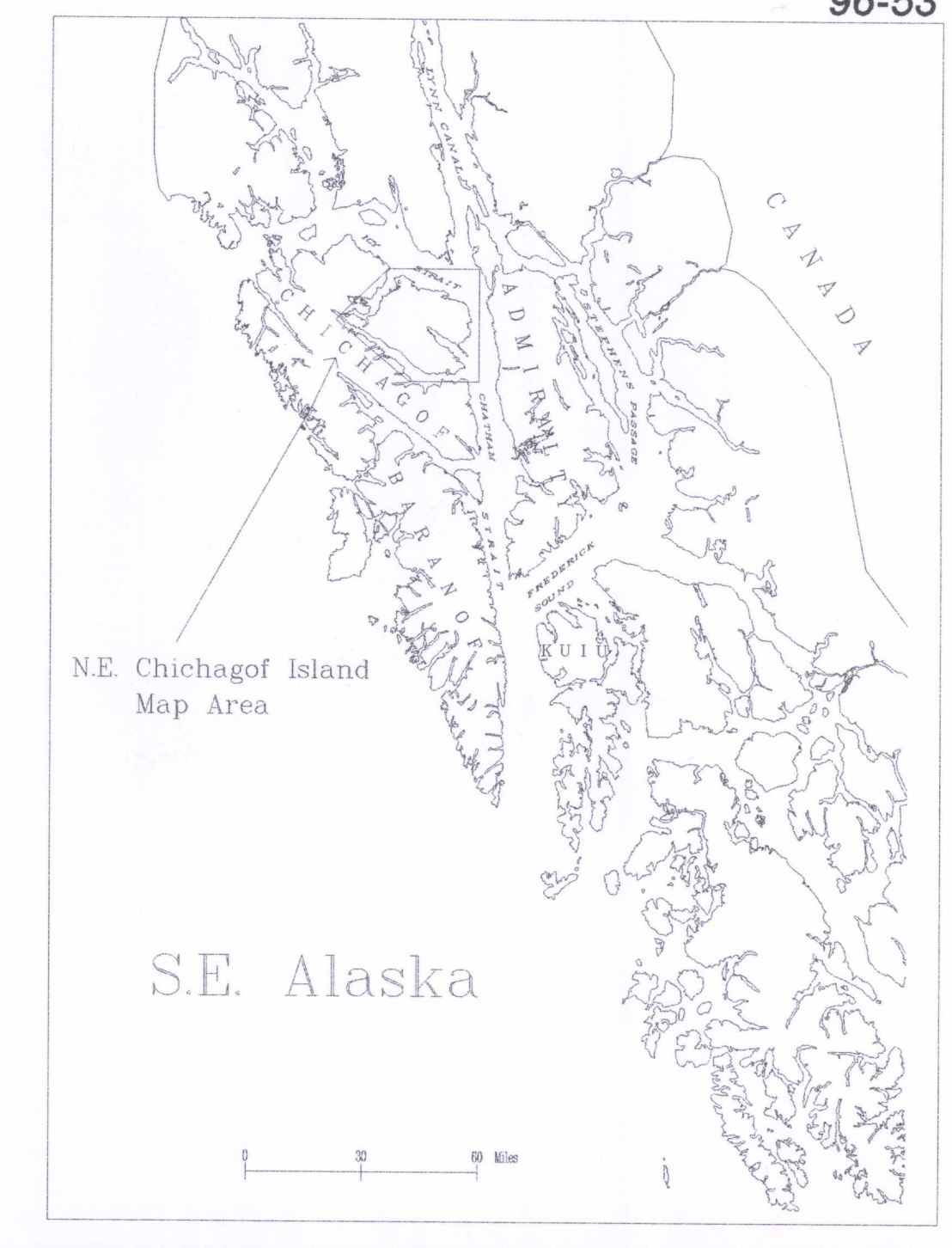
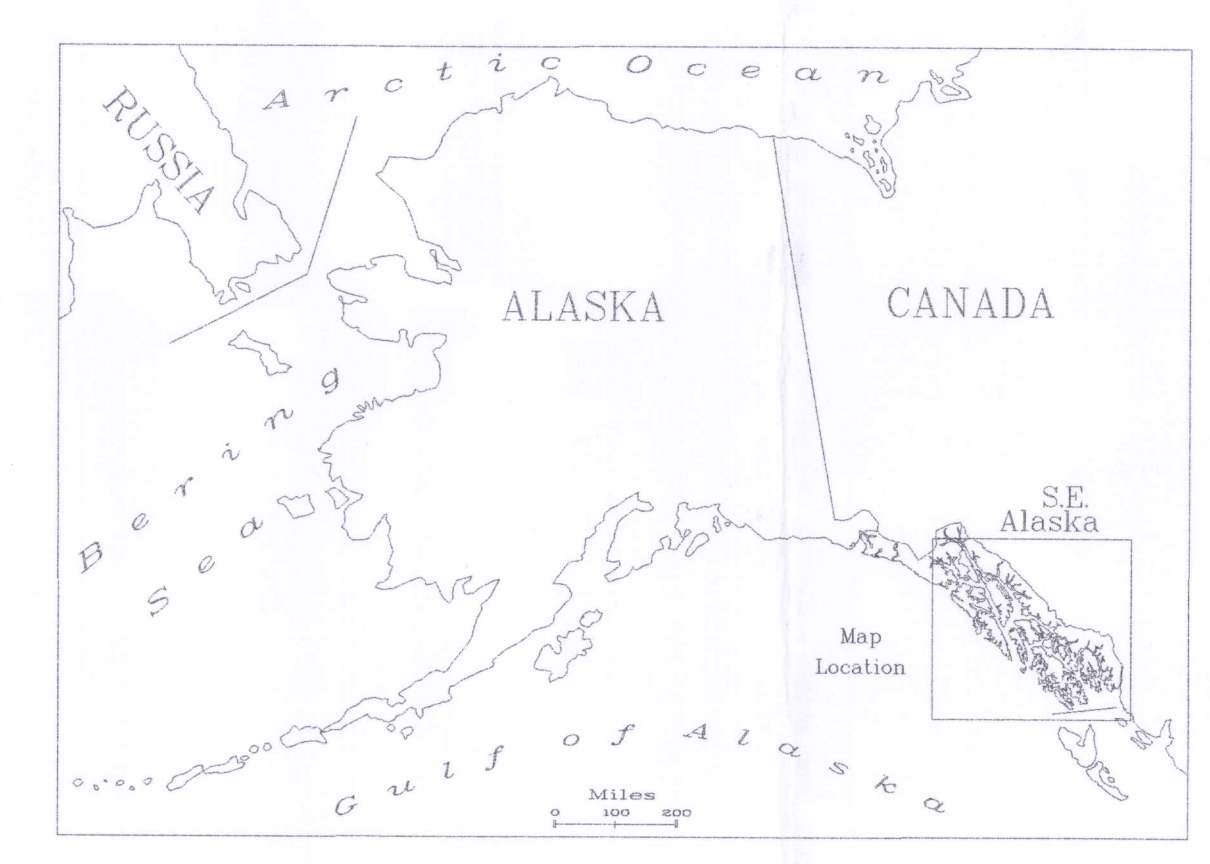
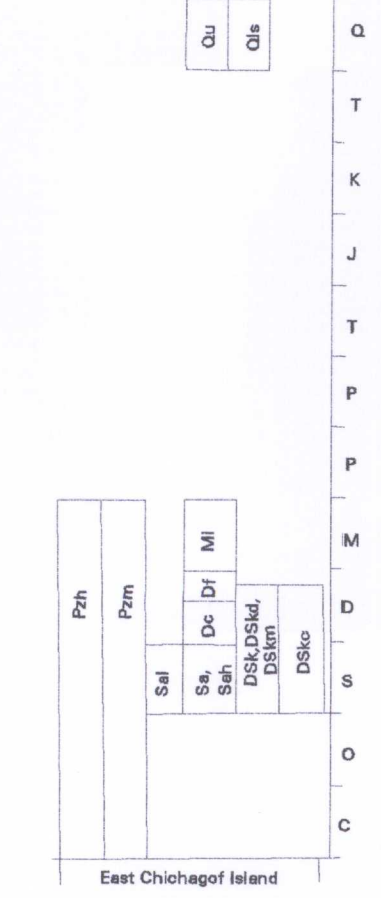


U.S. DEPARTMENT OF THE INTERIOR
U.S. GEOLOGICAL SURVEY

EXPLANATION

- Qu - Unconsolidated deposits (Quaternary)
- Qls - Unconsolidated landslide deposits (Quaternary)
- Kgr - Granite (Cretaceous)
- Kgd - Granodiorite (Cretaceous)
- Kgdm - Granodiorite, migmatitic (Cretaceous)
- Kad - Adamellite (Cretaceous)
- Kd - Diorite (Cretaceous)
- Jad - Adamellite (Jurassic)
- Jd - Diorite (Jurassic)
- Pzsy - Syenite (Paleozoic)
- Ssy - Syenite (Silurian)
- Mi - Iyoukeen Formation (Mississippian)
- Df - Freshwater Bay Formation (Devonian)
- Dc - Cedar Cove Formation (Devonian)
- Dch - Cedar Cove Formation, hornfelsed (Devonian)

Correlation of lithostratigraphic units

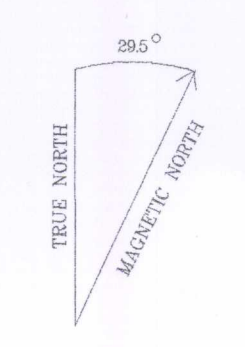


- DSk - Kennel Creek Limestone, undivided (Devonian and Silurian)
- DSkd - Kennel Creek Limestone, dolostone (Devonian and Silurian)
- DSkc - Kennel Creek Limestone, conglomerate (Devonian and Silurian)
- DSkm - Kennel Creek Limestone, marble (Devonian and Silurian)
- Sa - Point Augusta Formation (Silurian?)
- Sal - Point Augusta Formation, limestone (Silurian?)
- Sah - Point Augusta Formation, hornfelsed (Silurian?)
- Pzh - Hornfels, schist, and gneiss (Paleozoic)
- Pzm - Marble (Paleozoic)
- k - Karst topography
- Contact - dashed where inferred, dotted where concealed
- Fault - dashed where inferred, dotted where concealed
- 1 - Fossil locality
- Overturned anticline

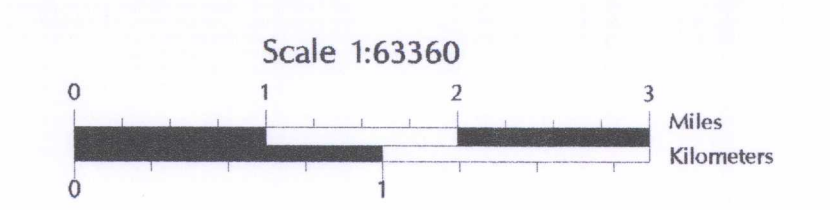
GEOLOGIC MAP OF NORTHEAST CHICHAGOF ISLAND

by
Susan M. Karl
1996

This map is preliminary and has not been reviewed for conformity with U.S. Geological Survey editorial standards or with the North American Stratigraphic Code. Any use of trade, firm, or product names is for descriptive purposes only and does not imply endorsement by the U.S. Government.



135° 10' 57" 45"



Contour Interval is 500 Feet