

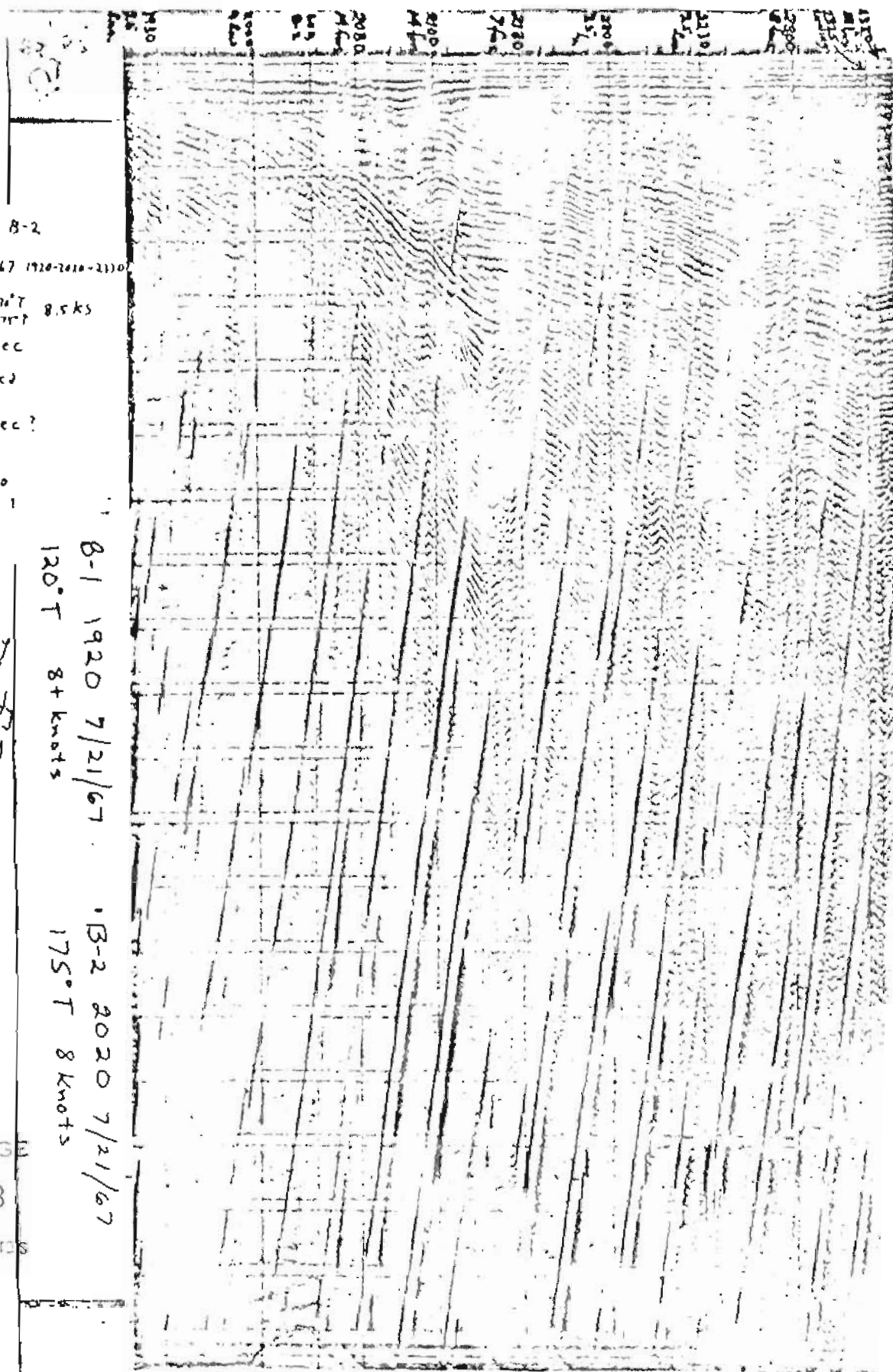
USGS BERING SEA SHELF SEISMIC REFLECTION PROFILES,
1967

Leg B-1, B-2
 Date + Time 7/21/67 1920-2020-2110
 Course + Speed B-1 170°T 8.5 kts
 B-2 175°T
 Sweep Rate 2 sec
 Power 46 xJ
 Pile Rate 8 sec?
 Filter Setting 117/60

*This profile is preliminary
 and has not been edited
 or reviewed for conformity
 with Geological Survey
 standards or nomen-
 clature.*

B-1 1920 7/21/67 120°T 8+ knots
 B-2 2020 7/21/67 175°T 8 knots

REC'D. COLLEGE
 APR 29 1968
 Div. Mines & Minerals



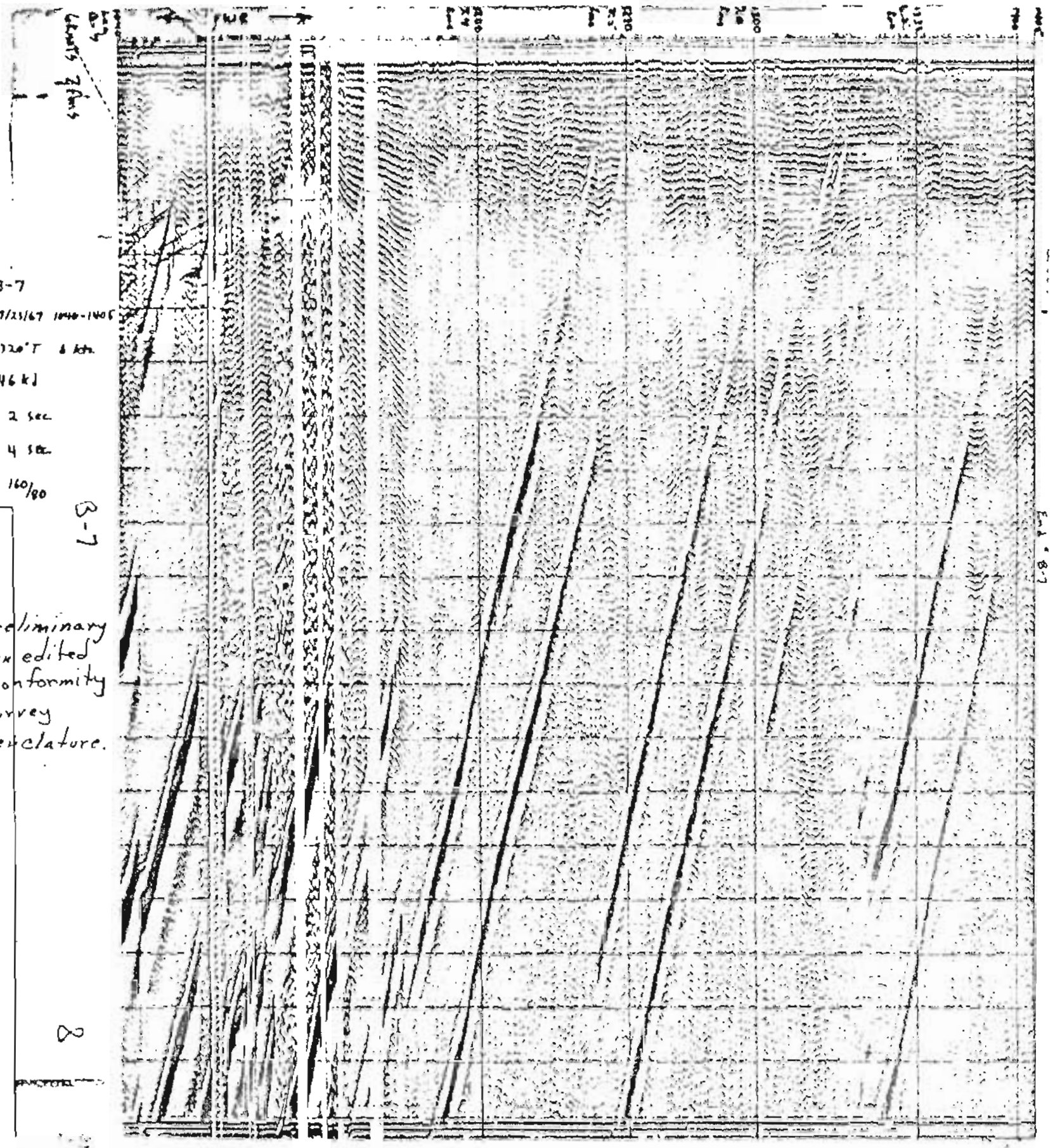
USGS BERING SEA SHELF SEISMIC REFLECTION PROFILES, 1967

Leg B-7
 Date & Time 7/25/67 1040-1405
 Course & Speed 320°T 6 kts
 Power 46 kJ
 Sweep Rate 2 sec
 File Rate 4 sec
 Filter Setting 160/80

B-7

This profile is preliminary
 and has not been edited
 or reviewed for conformity
 with Geological Survey
 standards or nomenclature.

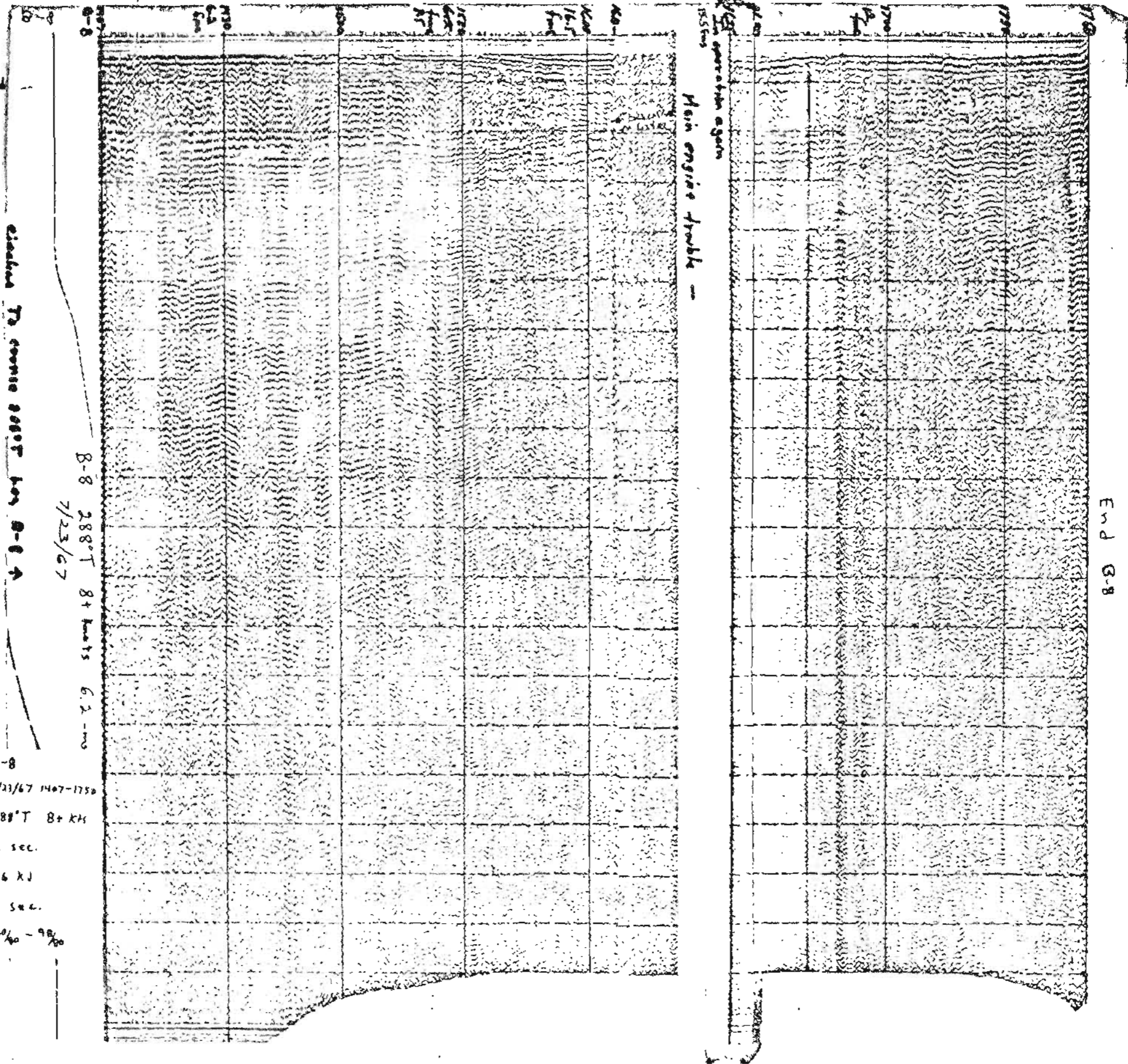
8



RIEDS COLLEGE
 APR 29 1968
 Div. Mines & Minerals

USGS BERING SEA SHELF SEISMIC REFLECTION PROFILES, 1967

This profile is preliminary and has not been edited or reviewed for conformity with Geological Survey standards or nomenclature.



Distance to seismic vessel log B-8

B-8 288°T 8+ knots 6.2 ms
7/25/67

Main engine trouble -

operation again

END G-8

Log B-8
Date & Time 7/21/67 1407-1750
Course & Speed 288°T 8+ knots
Sweep Rate 2 sec.
Power 46 kJ
Fire Rate 4 sec.
Filter setting 160/100 - 90/100

RECEIVED
APR 29 1968
Div. Mines & Minerals