

UNITED STATES DEPARTMENT OF THE INTERIOR

GEOLOGICAL SURVEY

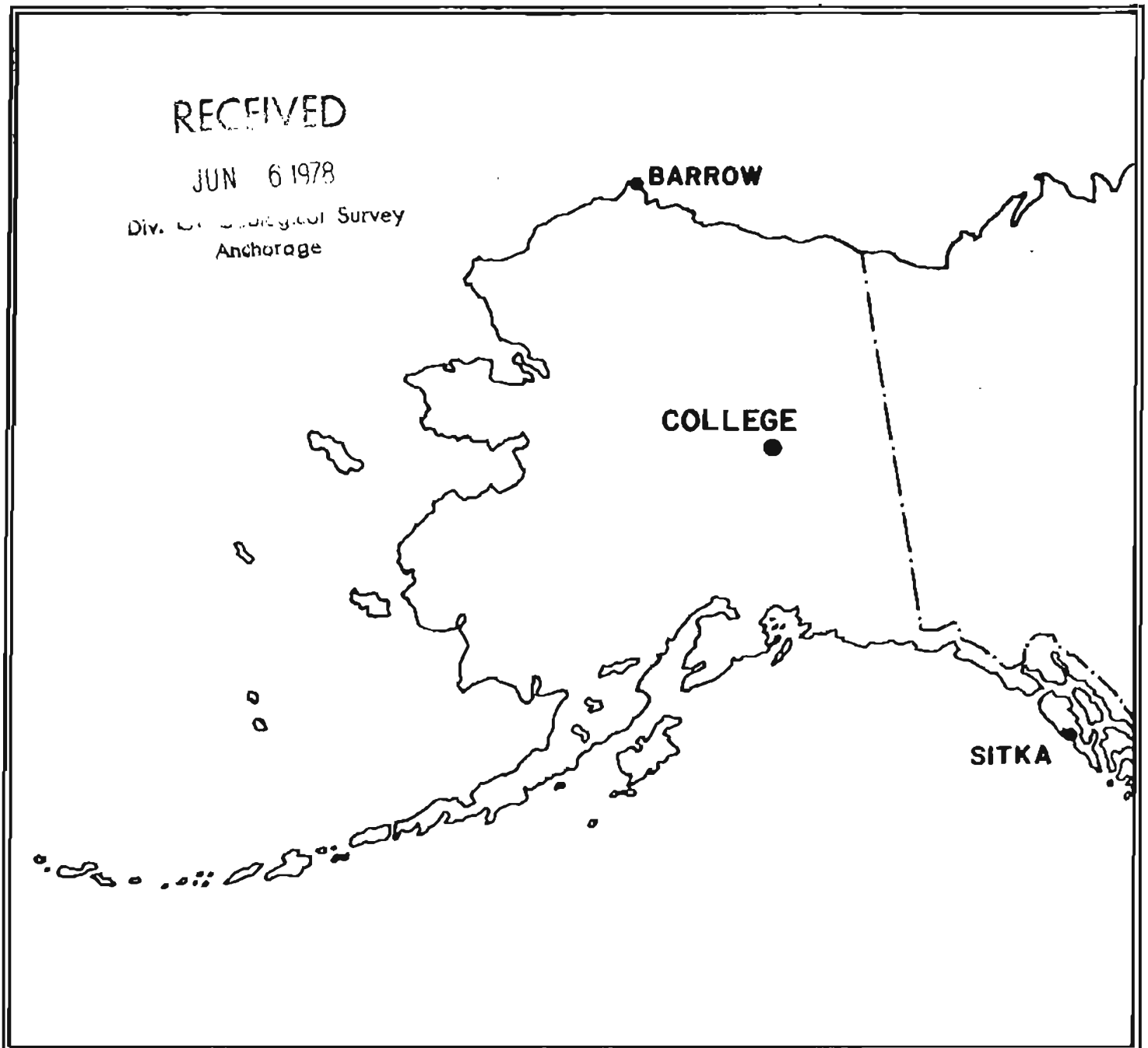
PRELIMINARY GEOMAGNETIC DATA

COLLEGE OBSERVATORY

FAIRBANKS, ALASKA

APRIL 1978

OPEN FILE REPORT 78-300D



ORDER OF CONTENTS

Explanation of Data & Reports

Magnetic Activity Report

Outstanding Magnetic Effects

Principal Magnetic Storms

Preliminary Calibration Data & Monthly Mean Absolute Values

Magnetogram Hourly Scalings

Sample Format for Normal & Storm Magnetograms

Normal Magnetograms

Storm Magnetograms (When Normal is too disturbed to read)

OUTSTANDING MAGNETIC EFFECTS

OBSERVATORY
COLLEGE, ALASKA

MONTH
APRIL

YEAR
1978

DATE	TIME U.T.	NATURE OF PHENOMENON ¹	REMARKS
10	1306	ssc*	
17	2344	ssc*	
IDENTIFIED BY: JEP		VERIFIED BY: JBT	

1. NATURE OF PHENOMENON: ssc, ssc*, si, si*, b, bp, bs, bps, pc1, pc2 - - - pc5, pg, pi 1, pi 2, sfe.

PRINCIPAL MAGNETIC STORMS
COLLEGE OBSERVATORY, COLLEGE, ALASKA
APRIL 19 78

WDC-A FOR SOLAR-TERRRESTRIAL PHYSICS
ENVIRONMENTAL DATA SERVICE, NOAA
BOULDER, COLORADO 80501 U.S.A.

Data from Individual Observatories:

Obs. 3 letter IAGA code	Geomag. lat.	Commencement		SC - amplitudes			Max. 3 hr - index K			Ranges			UT End day hr
		day	hr min (UT)	type	D(')	H(Y)	Z(Y)	day	(3 hr - period)	K	D(')	H(Y)	
CO	64.6 N	02	21XX	03 04	6 6, 7	6 6	171	1330	800	05 11
		10	1306	s.c.*	-14	+70	11	3	6	173	1110	500	12 13
		13	08XX	14	4	7	264	1540	1120	15 16
		19	04XX	19	3	7	155	1210	620	20 18
		23	08XX	23 24	6 2, 6	6 6	225	1270	1020	24 19
		30	00XX	May 02	3	8	447	2290	2330	May 04 21

NORMAL MAGNETOGRAPH					
COMPONENT	PERIOD		CALIBRATION		
	FROM	TO	SCALE VALUE		BASELINE
D	0000 U.T., 4-1-78	2400 U.T., 4-30-78	1.0/mm	3.8x/mm	27° 47.1 E
H	0000 U.T., 4-1-78	2400 U.T., 4-10-78	7.8x/mm		12749 x
	0000 U.T., 4-11-78	2400 U.T., 4-30-78	"		12758 x
Z	0000 U.T., 4-1-78	2400 U.T., 4-30-78	7.8x/mm		55128 x

STORM MAGNETOGRAPH					
COMPONENT	PERIOD		CALIBRATION		
	FROM	TO	SCALE VALUE		BASELINE
D	0000 U.T., 4-1-78	2400 U.T., 4-30-78	7.9/mm	29.7x/mm	24° 20.8 E
H	0000 U.T., 4-1-78	2400 U.T., 4-30-78	44.1x/mm		11503 x
Z	0000 U.T., 4-1-78	2400 U.T., 4-30-78	48.8x/mm		54026 x

RAPID RUN MAGNETOGRAPH			
COMPONENT	PERIOD		CALIBRATION
	FROM	TO	SCALE VALUE
D	OPERATION OF THE RAPID RUN MAGNETOGRAPH WAS DISCONTINUED AS OF 1800 U.T., 4-1-78.		
H			
Z			

MONTHLY MEAN ABSOLUTE VALUES*		
D	H	Z
28° 15.8 E	13038 x	55384 x

* COMPUTED FROM THE QUIETEST DAYS DURING MONTH.

DAYS USED: APR 5, 6, 7, 8, 9, 16, 17, 21, 22, 29

MAGNETOGRAM HOURLY SCALINGS
(UNIVERSAL TIME)

Values are in tenths of millivolts for successive periods of one hour beginning at midnight, hour 01 of local day (1505Z, T.) is hour 11 of universal day.

C	Q ₁ (V) (N)		Q ₂ (V) (N)		Q ₃ (V) (N)		Q ₄ (V) (N)		Q ₅ (V) (N)		Q ₆ (V) (N)		Q ₇ (V) (N)		Q ₈ (V) (N)		Q ₉ (V) (N)		Q ₁₀ (V) (N)		Q ₁₁ (V) (N)		Q ₁₂ (V) (N)		Q ₁₃ (V) (N)		Q ₁₄ (V) (N)		Q ₁₅ (V) (N)		Q ₁₆ (V) (N)		Q ₁₇ (V) (N)		Q ₁₈ (V) (N)		Q ₁₉ (V) (N)		Q ₂₀ (V) (N)		Q ₂₁ (V) (N)		Q ₂₂ (V) (N)		Q ₂₃ (V) (N)		Q ₂₄ (V) (N)																																																				
	01	02	03	04	05	06	07	08	09	10	11	12	13	14	15	16	17	18	19	20	21	22	23	24	25	26	27	28	29	30	31	32	33	34	35	36	37	38	39	40	41	42	43	44	45	46	47	48	49	50	51	52	53	54	55	56	57	58	59	60	61	62	63	64	65	66	67	68	69	70	71	72	73	74	75	76	77	78	79	80	81	82	83	84	85	86	87	88	89	90	91	92	93	94	95	96	97	98	99
	01	221	187	169	160	202	269	181	191	181	201	300	281	268	294	290	302	302	304	302	308	322	362	368	361	346	325	300	224	231	6658																																																																				
	02	211	169	215	230	223	226	190	243	251	157	306	271	03	469	521	352	403	407	436	408	390	370	403	285	399	34	363	7379																																																																						
	03	254	248	201	172	179	220	159	224	243	261	253	307	04	321	311	321	339	403	523	392	429	344	308	391	531	7521																																																																								
	04	336	221	217	191	208	337	279	251	240	262	279	300	05	281	299	290	322	349	349	341	297	262	217	268	272	6668																																																																								
	05	258	249	232	221	313	261	270	280	311	312	310	297	06	292	257	321	281	278	332	338	347	333	336	320	298	7047																																																																								
	06	272	258	266	262	274	279	290	289	288	289	288	291	07	300	299	287	300	307	339	360	371	310	331	284	261	7095																																																																								
	07	246	236	230	240	260	270	269	273	280	284	309	317	08	292	291	298	312	343	355	340	331	348	340	491	269	7030																																																																								
	08	245	229	216	236	249	270	281	312	276	311	303	291	09	279	291	291	291	311	341	360	351	332	359	357	322	282	7095																																																																							
	09	259	240	225	240	253	259	265	268	288	290	287	289	10	288	291	299	363	341	371	370	397	438	521	248	261	7351																																																																								
	10	297	320	193	198	121	148	-6	34	195	241	316	215	11	291	290	280	288	334	421	440	413	369	355	222	250	6245																																																																								
	11	271	296	229	234	232	241	255	347	270	198	405	331	12	278	293	286	364	392	349	340	360	321	299	277	281	7149																																																																								
	12	253	221	206	217	232	260	241	246	291	250	253	261	13	321	350	407	436	408	390	370	403	285	399	34	363	7379																																																																								
	13	241	142	171	163	213	139	135	59	271	258	374	755	14	683	366	367	431	472	469	448	461	378	321	291	304	7912																																																																								
	14	299	217	182	169	221	200	197	352	215	189	250	308	15	301	376	474	369	343	388	330	326	328	300	280	277	6891																																																																								
	15	253	230	242	221	219	250	251	269	249	239	261	325	16	330	311	319	329	336	344	337	359	300	274	263	251	6762																																																																								
	16	239	220	221	241	251	269	280	291	261	348	318	299	17	323	321	332	347	351	341	349	348	337	321	290	269	7067																																																																								
	17	241	220	190	179	229	297	281	244	263	269	271	254	18	270	284	249	259	298	312	312	300	341	298	280	289	6430																																																																								
	18	279	261	256	251	249	162	123	-62	191	250	270	271	19	319	534	343	542	442	383	422	307	267	272	268	317	6969																																																																								
	19	270	283	184	179	209	248	258	267	298	278	220	278	20	290	304	313	340	315	326	324	299	324	299	310	267	6683																																																																								
	20	257	231	241	240	260	259	300	310	281	257	261	251	21	257	310	248	320	370	378	367	357	348	300	267	247	6911																																																																								
	21	218	210	226	241	254	267	276	267	263	276	274	297	22	277	308	294	361	381	388	387	377	381	209	233	217	6882																																																																								
	22	203	190	169	239	252	249	279	267	264	241	166	232	23	249	292	292	586	574	438	488	361	372	311	183	219	7116																																																																								
	23	248	245	276	170	182	6	138	256	213	295	256	475	24	214	395	381	546	451	367	338	332	310	281	292	319	6986																																																																								
	24	191	134	179	212	191	239	264	256	339	211	171	301	25	303	310	330	372	400	429	354	331	314	289	280	239	6641																																																																								
	25	221	214	150	193	226	151	207	123	253	213	270	290	26	353	322	339	347	391	419	409	339	336	313	290	269	6638																																																																								
	26	231	210	232	203	232	210	261	238	274	240	190	286	27	384	316	331	432	401	335	329	297	325	313	339	272	6891																																																																								
	27	227	193	132	198	231	300	271	227	261	161	237	251	28	271	250	303	341	374	380	364	364	350	278	278	241	6483																																																																								
	28	200	210	209	231	239	291	270	279	242	261	266	271	29	309	351	341	346	389	401	388	403	339	308	291	272	7107																																																																								
	29	261	219	196	179	148	182	169	231	239	236	30	278	30	57	112	241	342	605	509	348	301	328	376	309	193	5673																																																																								

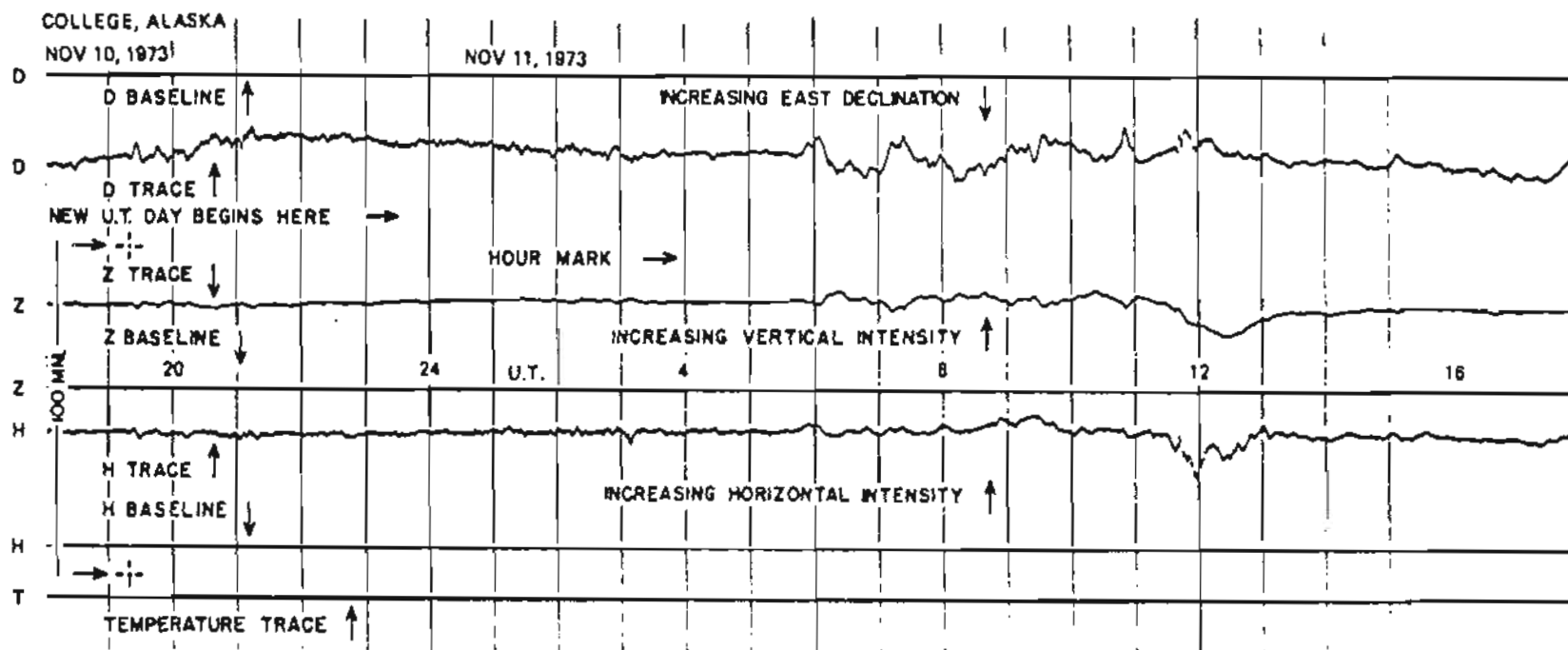
Interpolated
 Significant portion of hour interpolated.
 No record; or no value available because of faulty record.
 Scaling uncertain because of magnetic shift.
 Record all sheets for part or all of hour; if value is zero, current was estimated for missing part.

Scaled by: SPT, JEP
 Checked by: JEP, SPT
 Signs reversed by: JEP
 Purchased by:

Preliminary heading and scale values:
 Interval: _____
 Beginning: _____
 Duration: _____
 Value: _____
 Scale: _____
 Value: _____

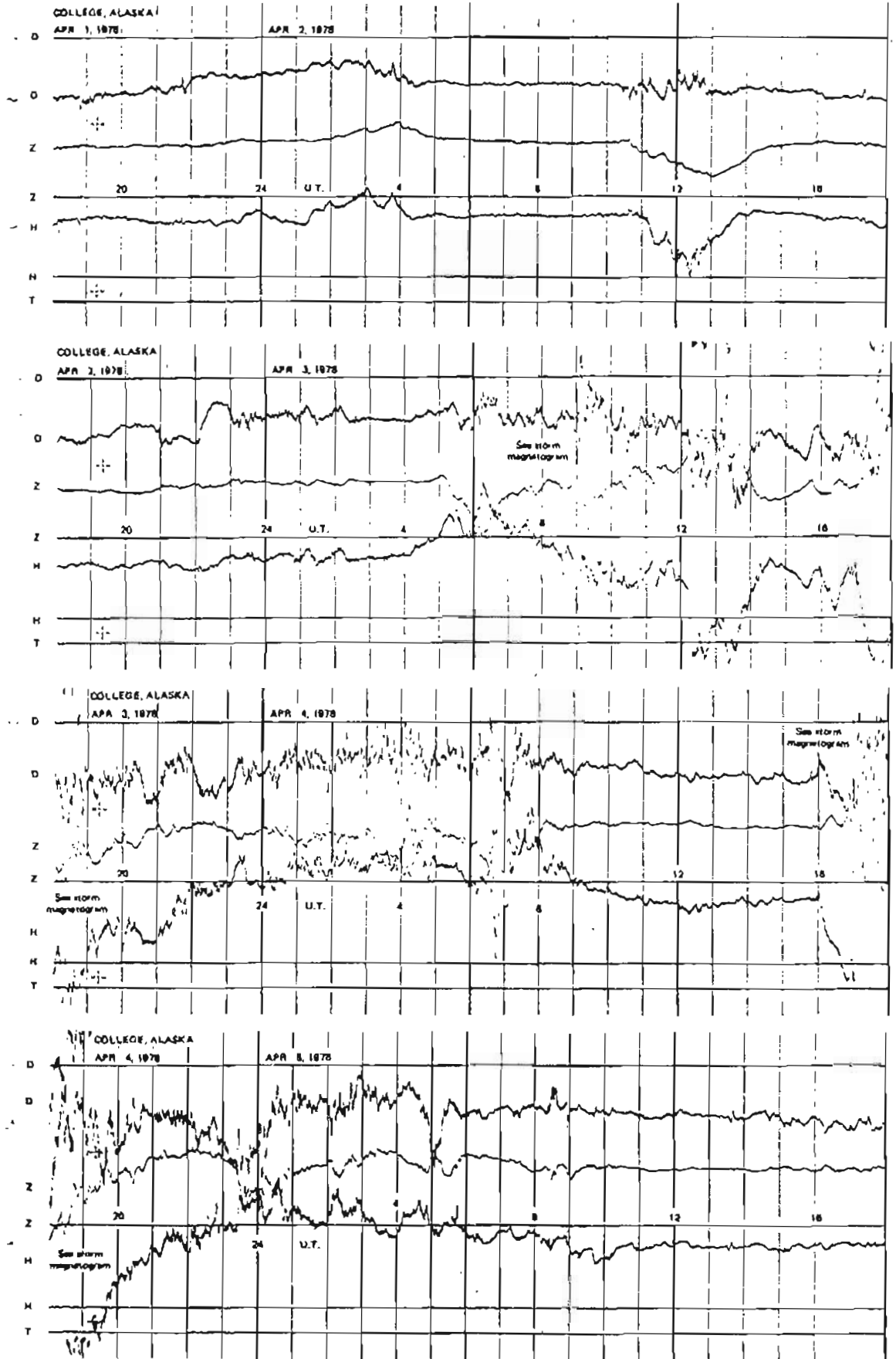
MONTHLY SUM: 207320
 MONTHLY MEAN: 288
 DATES WITH DATA:

FORMAT FOR NORMAL & STORM MAGNETOGRAMS (SAMPLE ONLY)

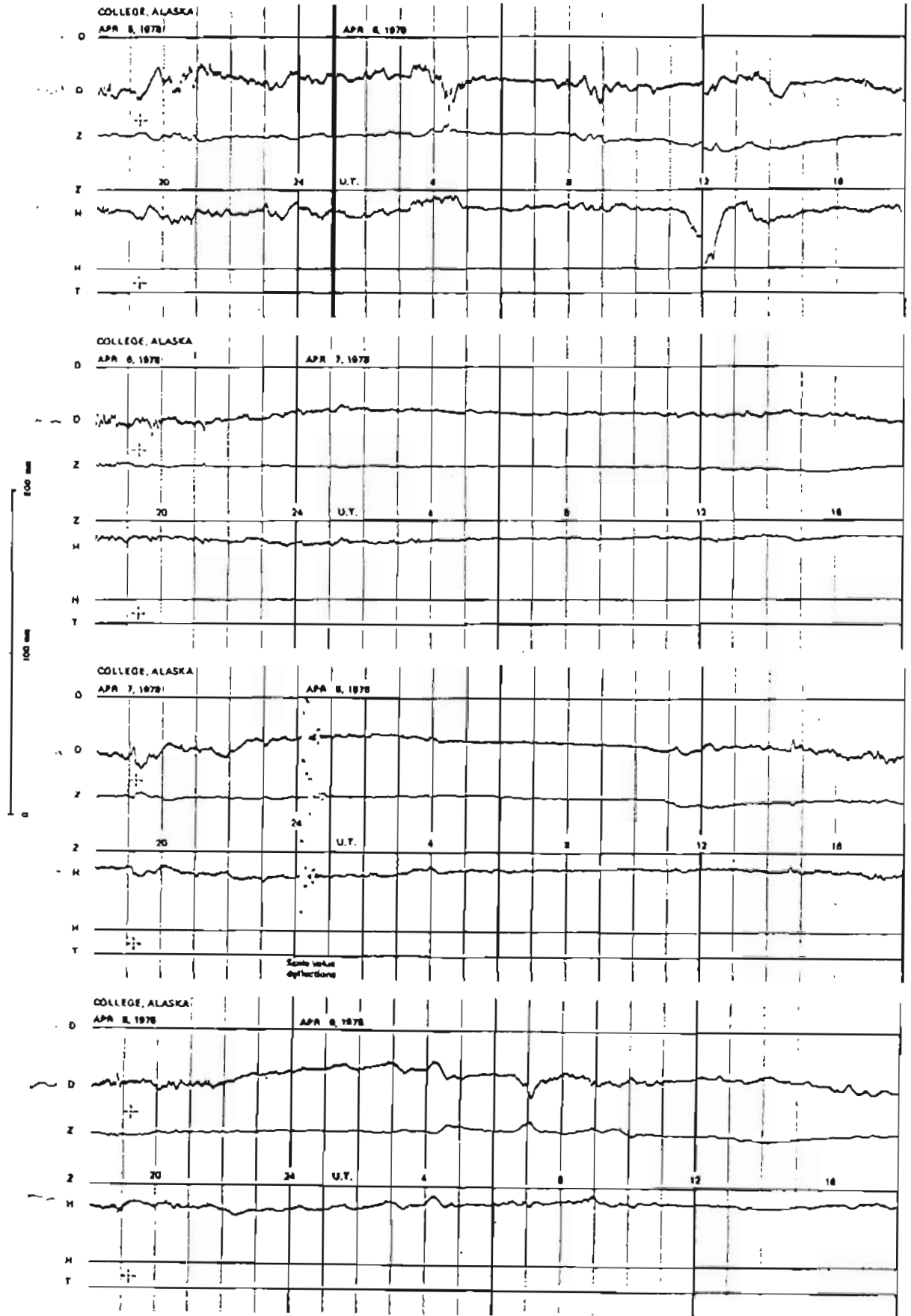


SEE PRELIMINARY CALIBRATION DATA FOR SCALE VALUES & BASELINE VALUES

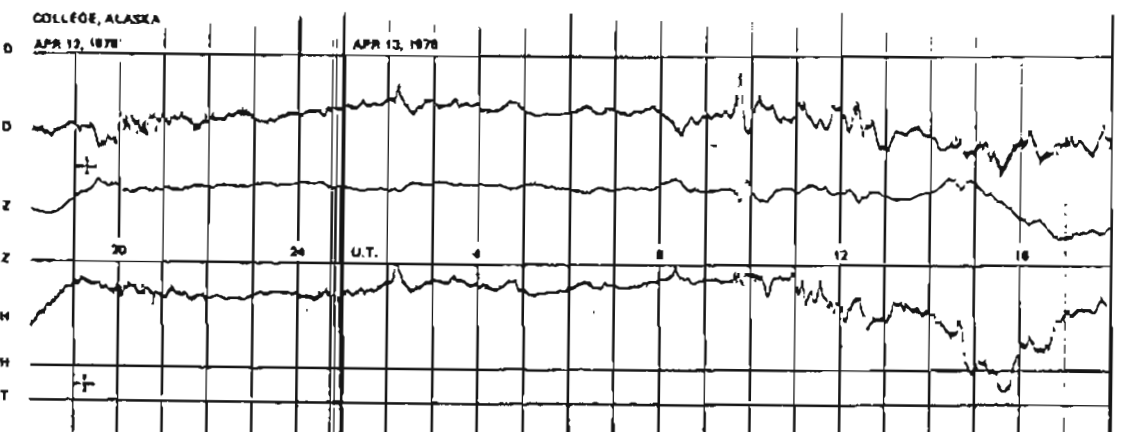
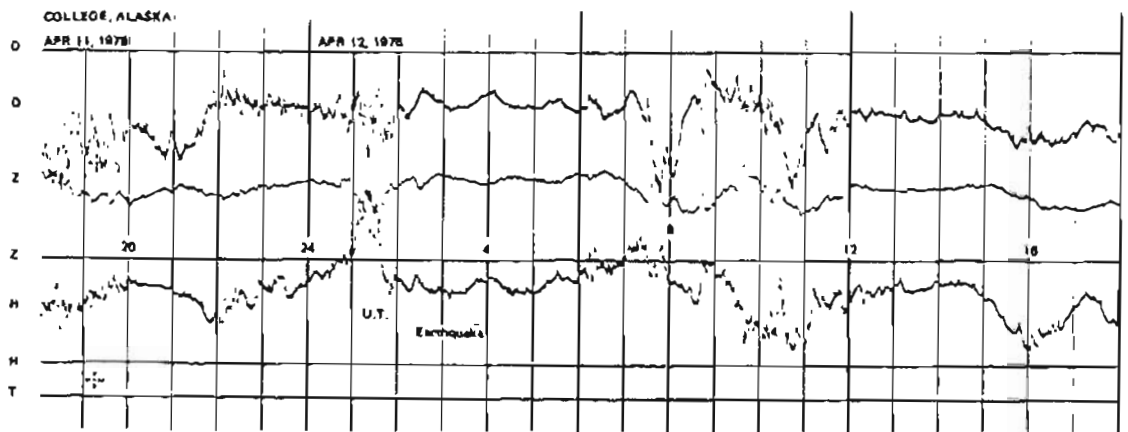
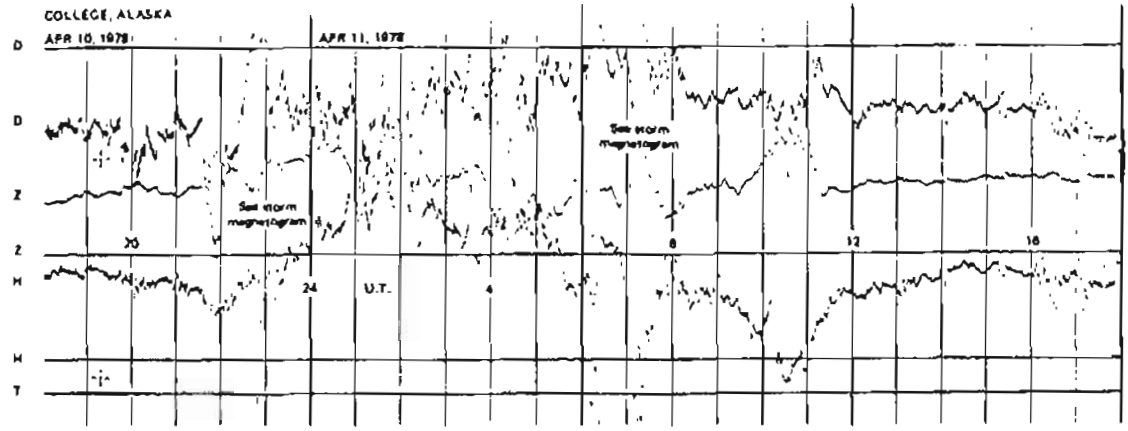
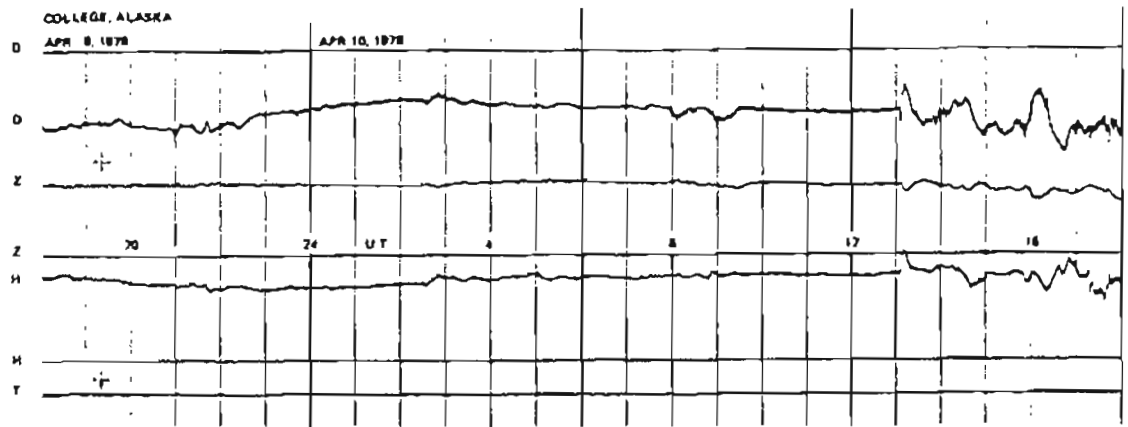
NORMAL MAGNETOGRAMS



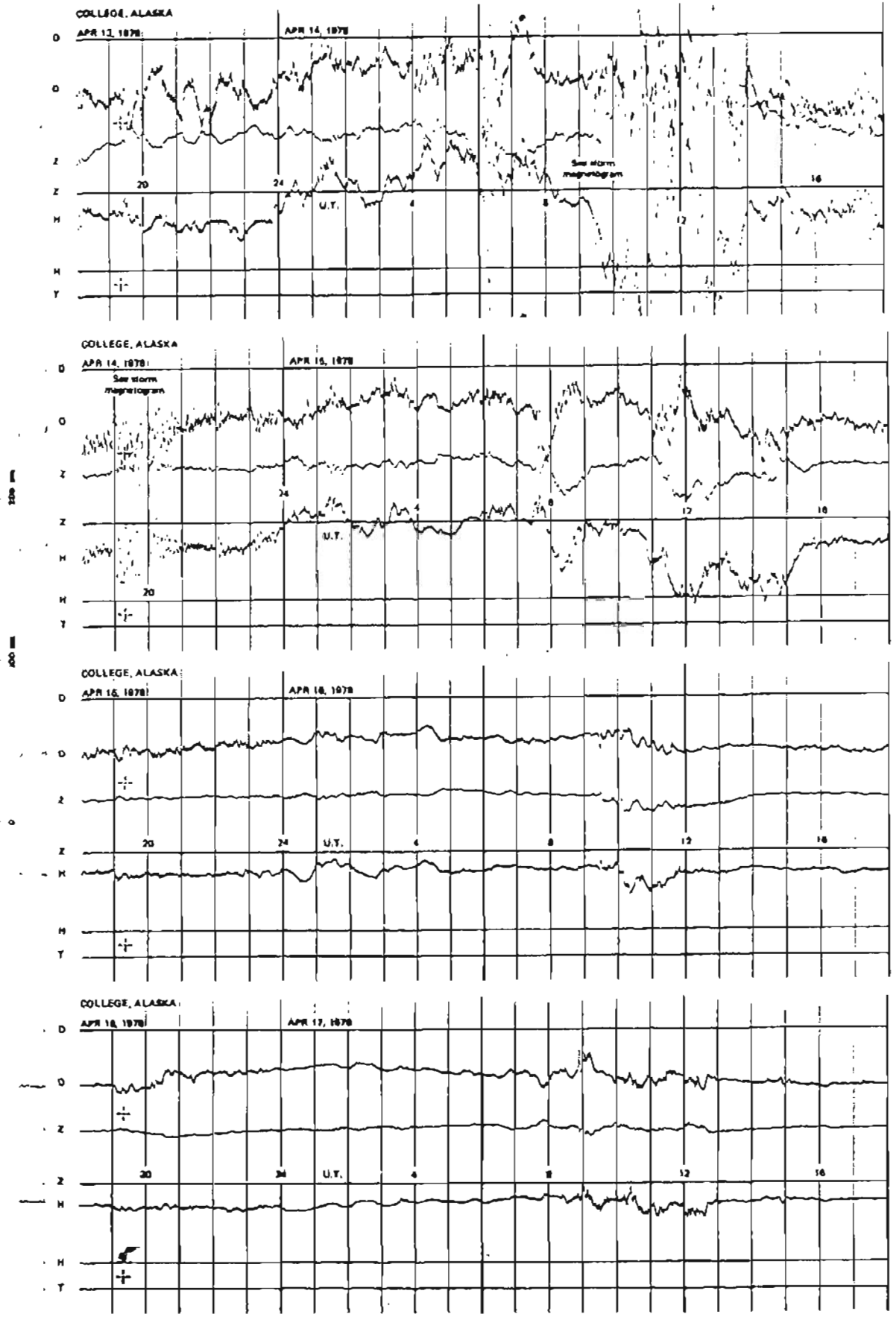
NORMAL MAGNETOGRAMS



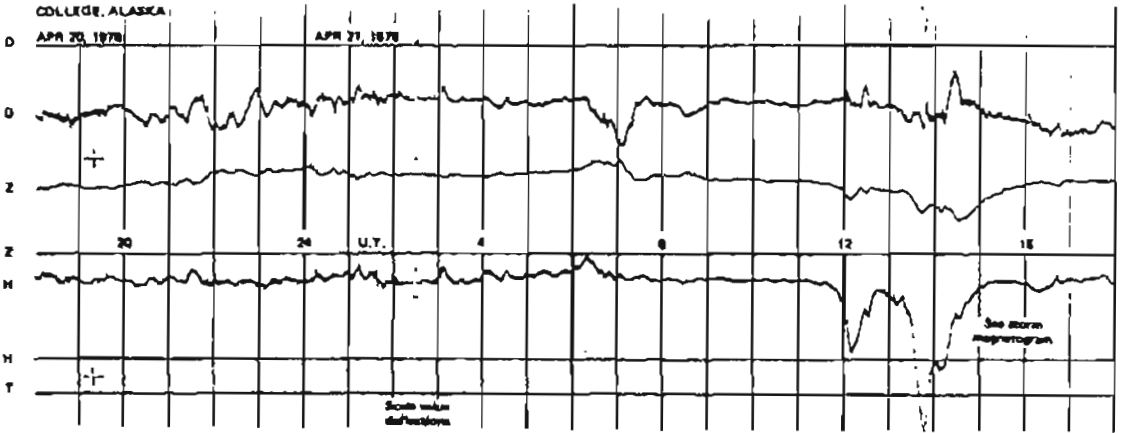
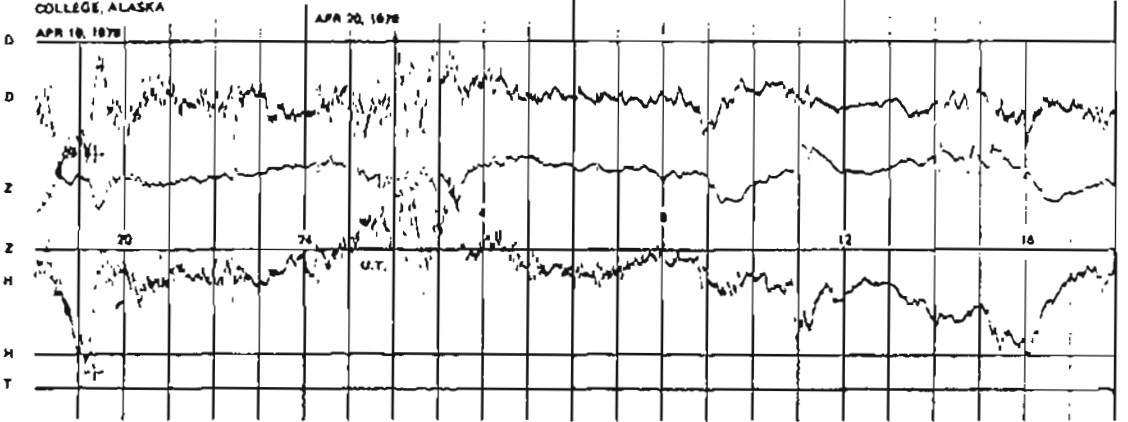
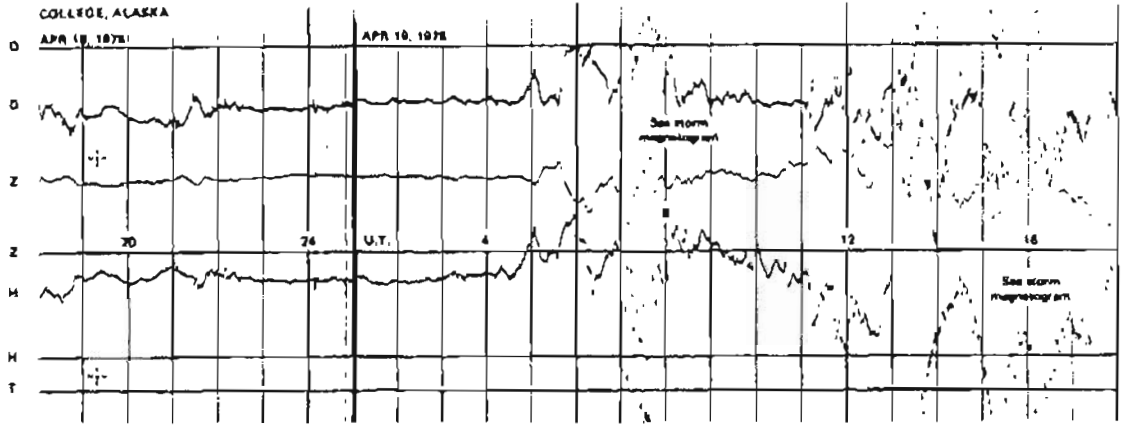
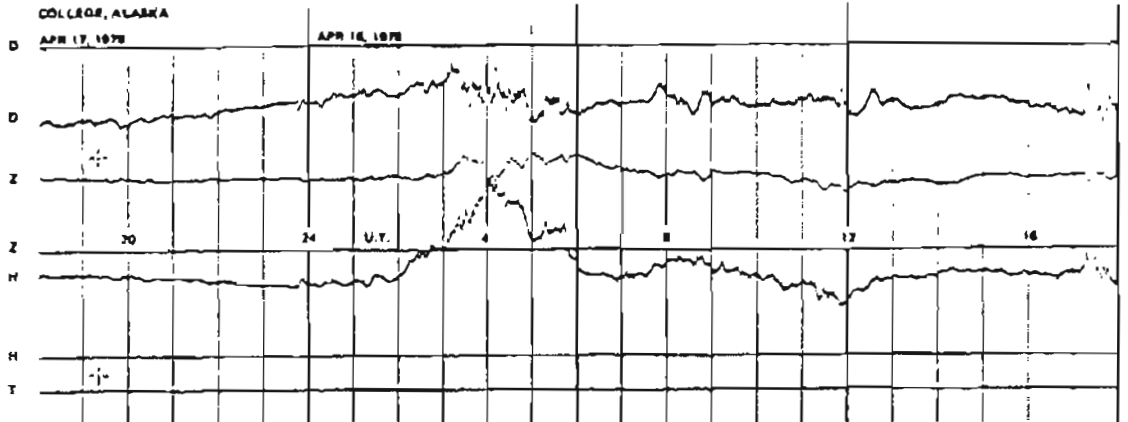
NORMAL MAGNETOGRAMS



NORMAL MAGNETOGRAMS

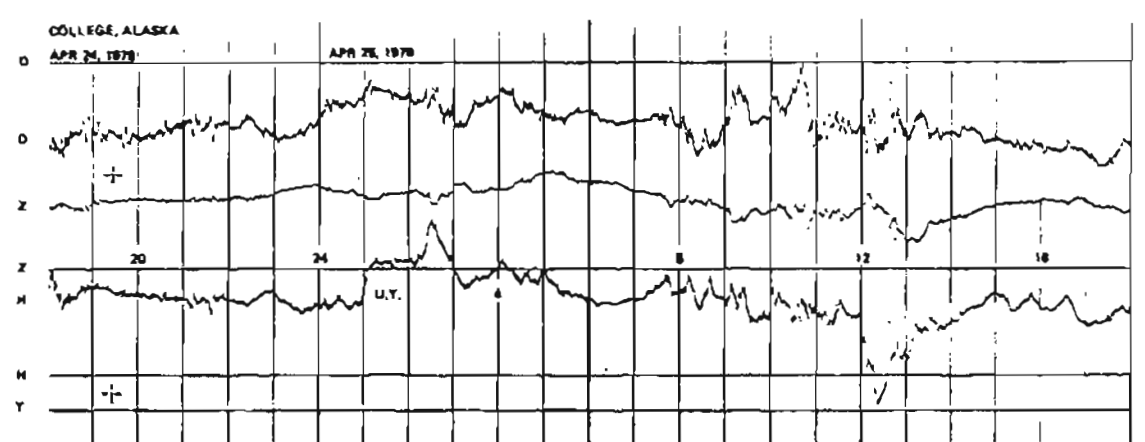
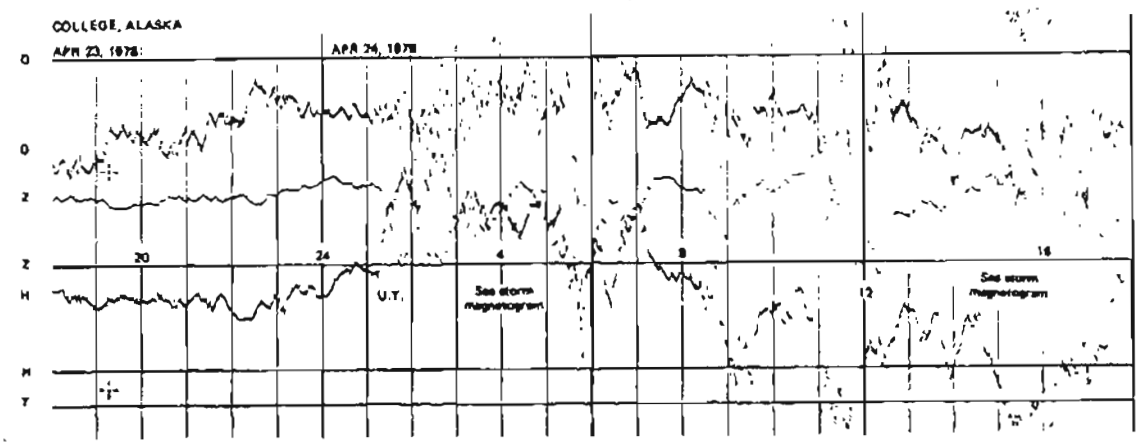
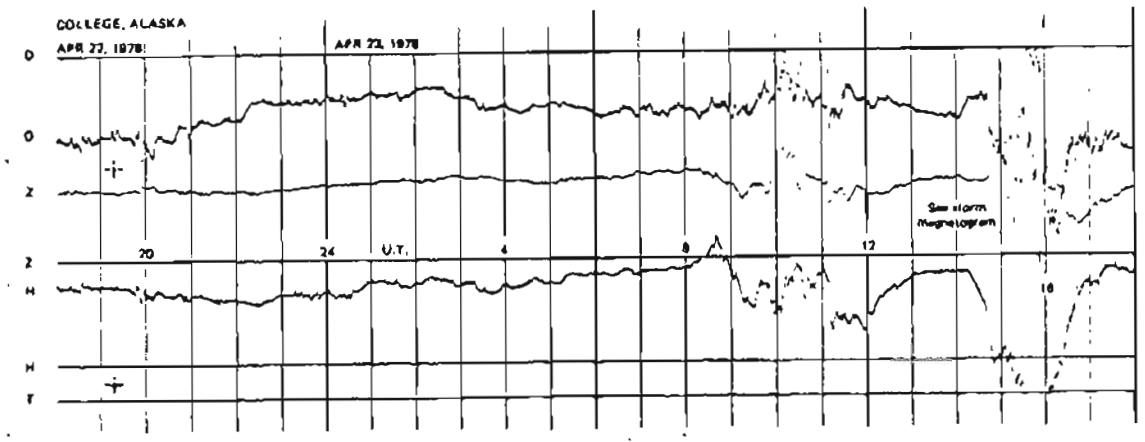
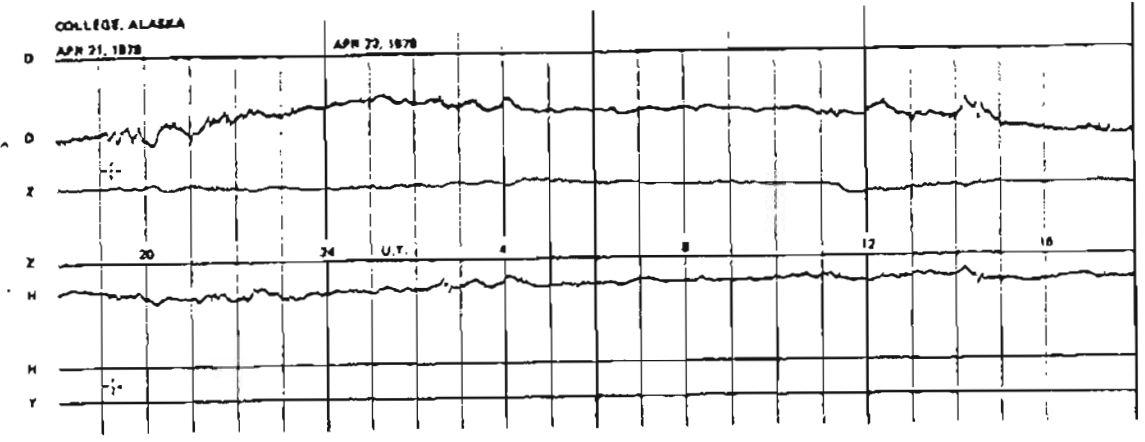


NORMAL MAGNETOGRAMS



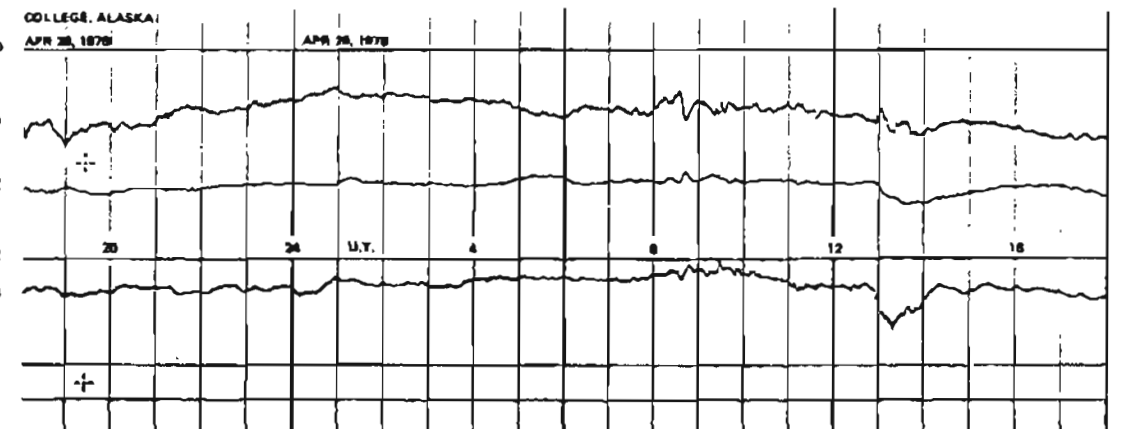
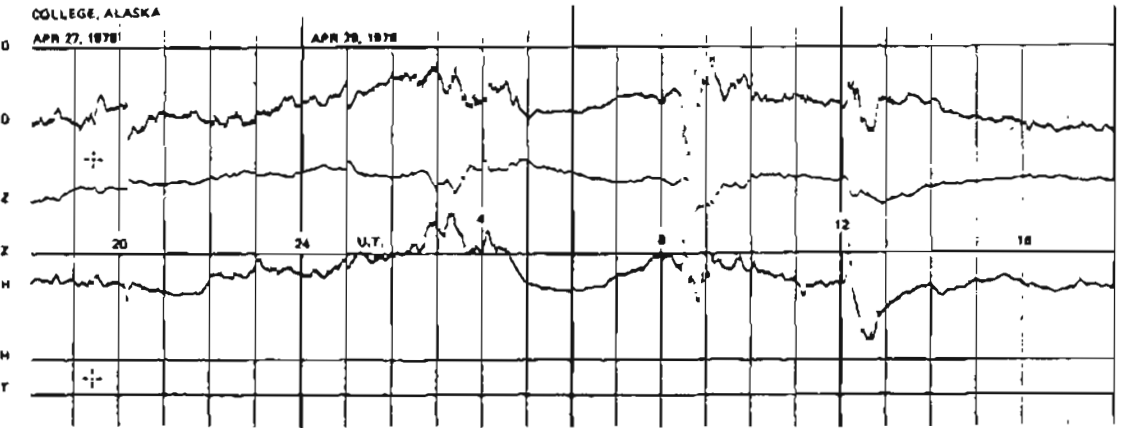
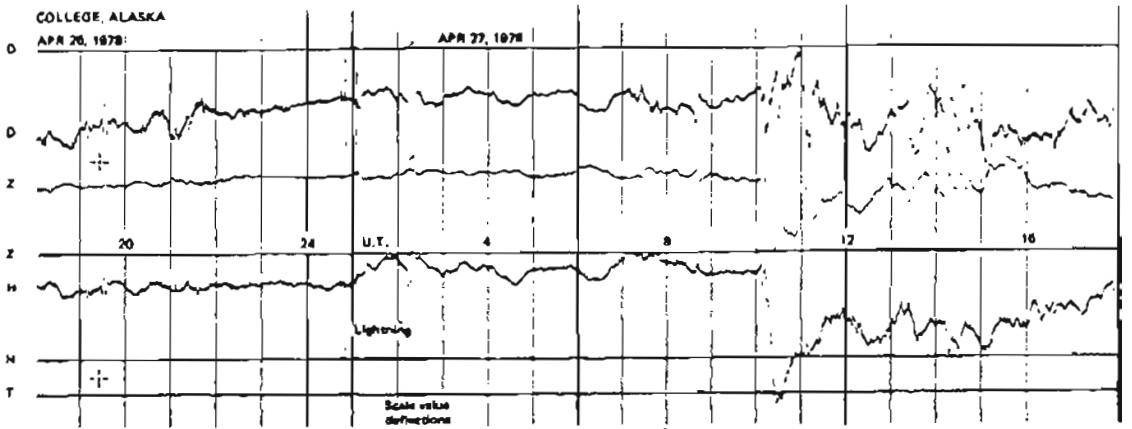
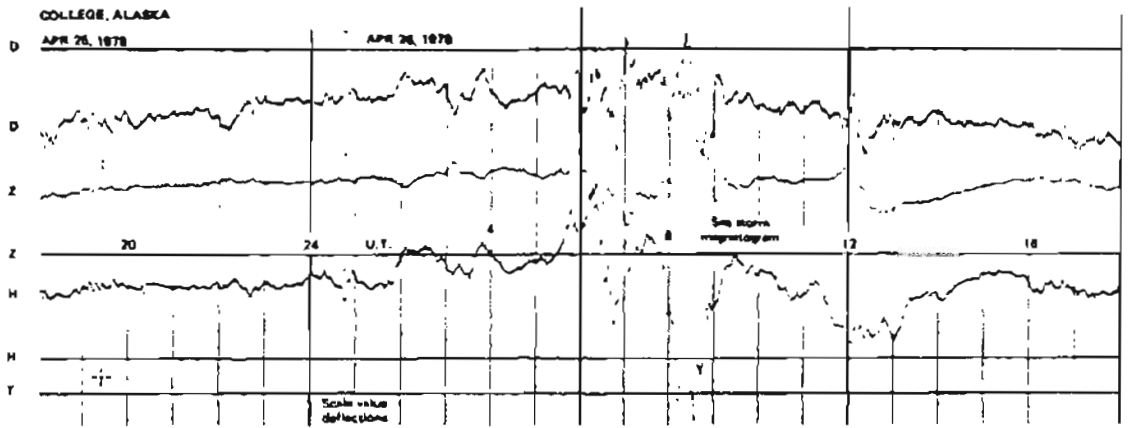
200 mV
100 mV
0

NORMAL MAGNETOGRAMS



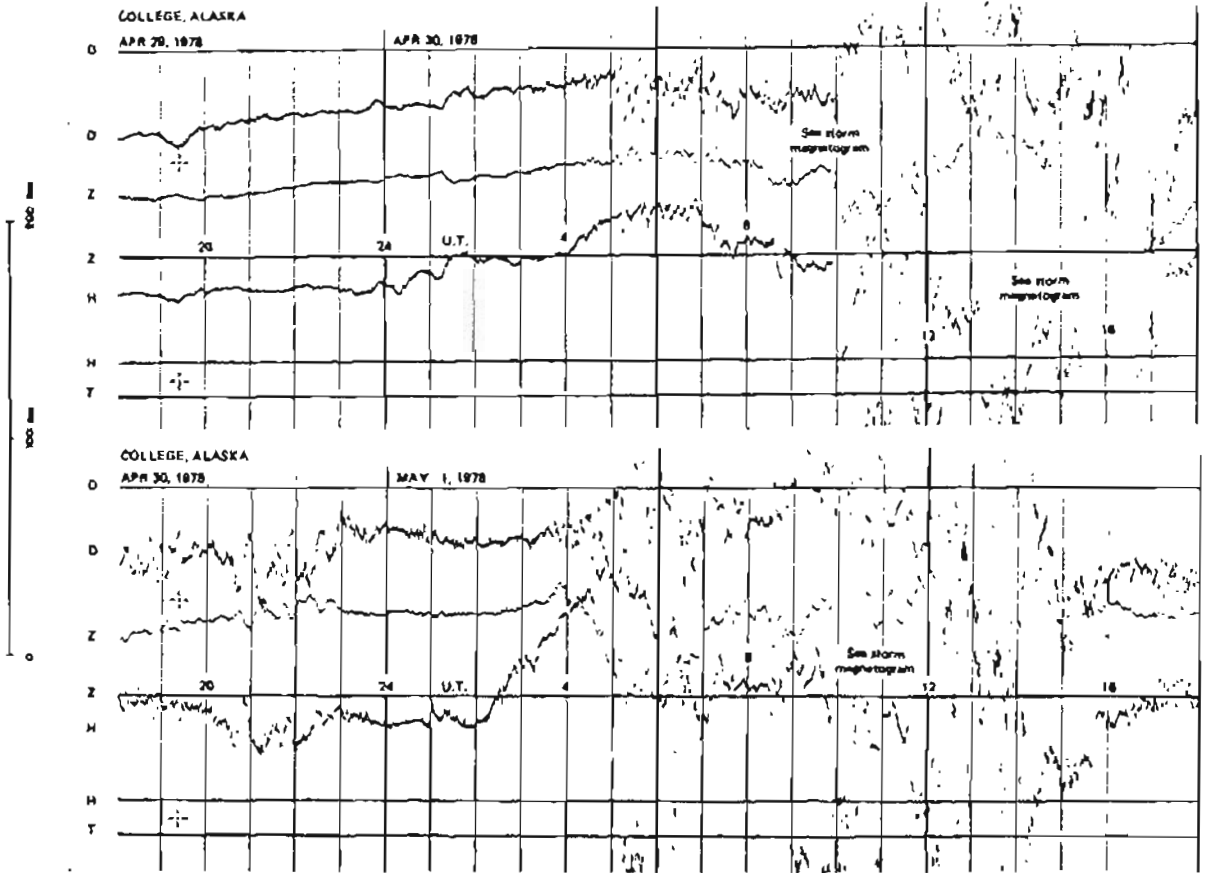
200 mm
100 mm
0

NORMAL MAGNETOGRAMS

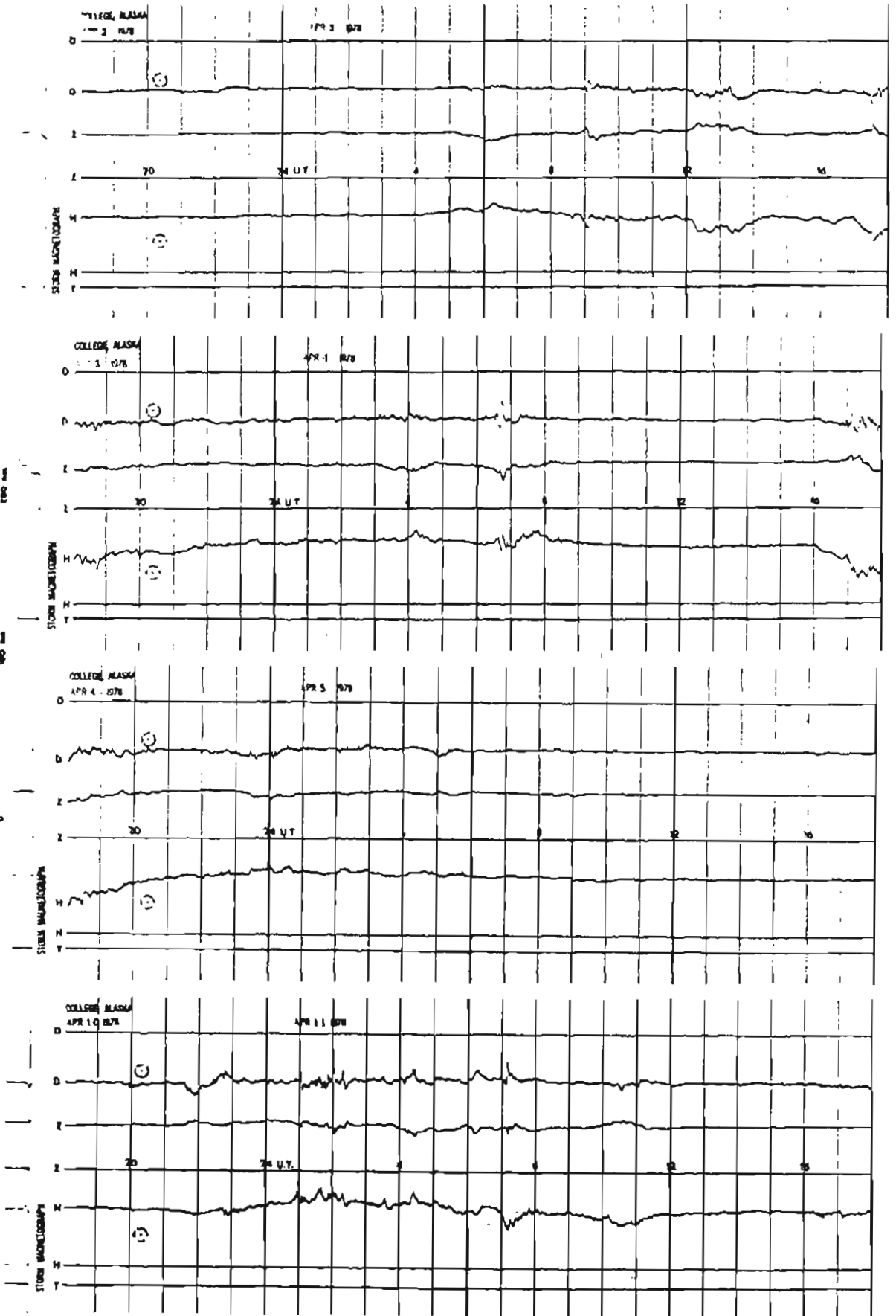


200 mV
100 mV
0

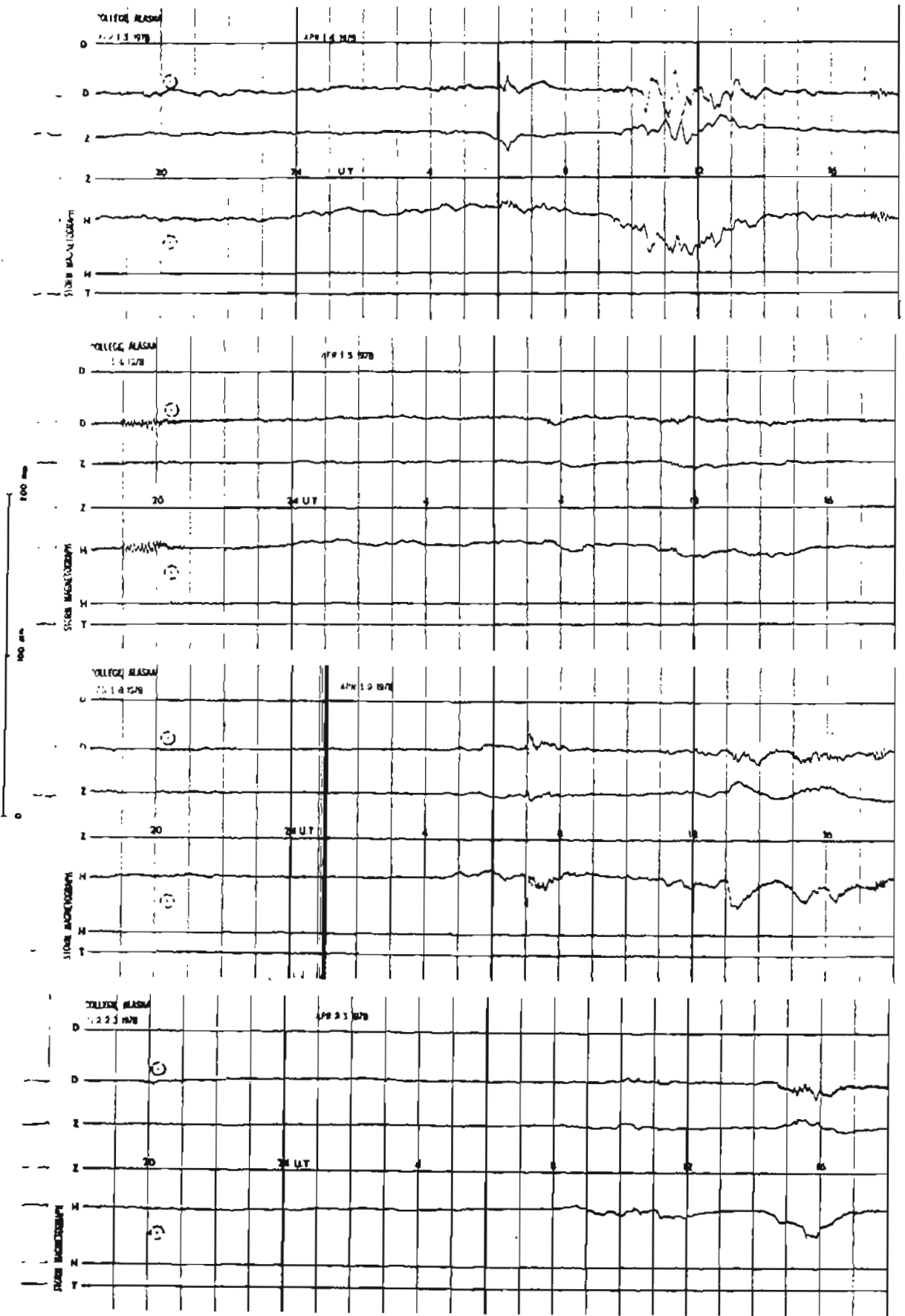
NORMAL MAGNETOGRAMS



STORM MAGNETOGRAMS



STORM MAGNETOGRAMS



STORM MAGNETOGRAMS

