

EXPLANATION

SURFICIAL DEPOSITS

Recent
 Qp Flood-plain deposits
 Gravel, sand, silt, and interbedded wood, peat, and other organic material

Pleistocene
 Qc Glacial deposits
 Merional fill and outwash gravel

Qs Silt deposits
 Mainly bedded buff-colored silt

Qte Gravel deposits
 Gravel and associated small quantities of sand and silt that lie on rock benches and form terraces; they extend beneath the other surficial deposits as buried gravels

BEDDED ROCKS

Tw Waterboot basalt
 (Nisene basalt flow)

ANGULAR UNCONFORMITY

Th Holokuk basalt
 Basalt flows and interbedded basaltic tuffs, undifferentiated

Tgl Tgl
 Geynum rhyolite group
 Tg, rhyolite lava and Tg, tuff
 ANGULAR UNCONFORMITY (?)

Ki Matarok basalt
 Basalt flows, underlain by thin sedimentary breccia, may include some basalt sills

DISCONFORMITY

Ks Kuskokwim group
 Ks, interbedded granodiorite and shale, intraformational breccia and conglomerate, and local zones of basalt breccia and conglomerate; Ks, altered to hornfels, in contact-metamorphic zones adjacent to stocks of igneous rock

REGIONAL UNCONFORMITY

KSPCg Gneiss group
 Chiefly siltstone, interbedded with lesser amounts of chert and volcanic rock, and very minor amounts of limestone, gray-schale, and breccia

Fol Holma group
 Partly dolomitic limestone, chiefly massive but thinner bedded in the upper zones; contains small reef-like deposits and locally intraformational conglomerate and breccia

INTRUSIVE IGNEOUS ROCKS

Qm Quartz monzonite
 Forms stocks, chiefly of quartz monzonite, but which range from granodiorite to granite; in some facies include basalt, quartz diorite, granite pegmatite, and apatite

Qd Quartz diorite
 Forms dikes, sills, and small stocks; bodies of quartz diorite and related rocks, which range from basalt to granodiorite

Ba Basalt
 Forms dikes and sills, some of which are columnar

Al Albitic rhyolite
 Forms sheets, dikes, and sills; large bodies are porphyritic, small bodies nonporphyritic

Contact
 Dashed where approximately located or inferred

High angle fault
 U, upthrown side; D, downthrown side.
 Dashed where approximately located, dotted where concealed

Thrust fault
 Dashed where approximately located, dotted where concealed

Axis of anticline
 Dashed where hypothetical and diagrammatic

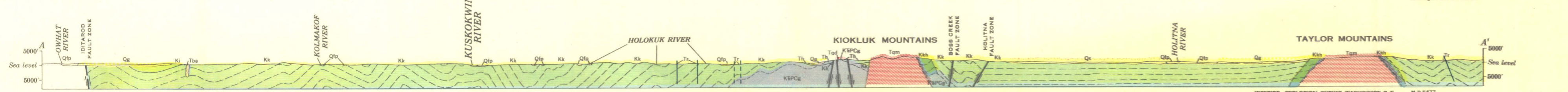
Axis of syncline
 Dashed where hypothetical and diagrammatic

Strike and dip of Holokuk and Waterboot basalts

Fossil locality
 Mine
 Prospect
 Trail

Base from U. S. Geological Survey Alaska
Map 55, Preliminary edition of Nov. 1947

Geology by W. M. Cady, R. E. Wallace, J. M. Hoar,
and E. J. Webber, assisted by George Gryc,
C. A. Hickson, R. V. Cashman, and S. F. Johnson,
Surveyed 1941-1945



GEOLOGIC MAP AND STRUCTURE SECTION OF THE CENTRAL KUSKOKWIM REGION, ALASKA

