

EXPLANATION

SURFICIAL DEPOSITS

Recent

Qfp
Flood plain deposits
Silt, sand, and gravel

QUATERNARY

BEDDED ROCKS

Lower (?) and Upper Cretaceous

Kk
Kuskokwim group
Interbedded graywacke and shale

CRETACEOUS

INTRUSIVE IGNEOUS ROCKS

Eocene (?)

Tr
Albite rhyolite
Forms sheets, sills, and dikes, most of which are porphyritic

Tb
Biotite basalt
Forms thin sills and dikes, most of which are altered to silica-carbonate rock

TERTIARY

--- Contact
Dashed where approximately located or inferred

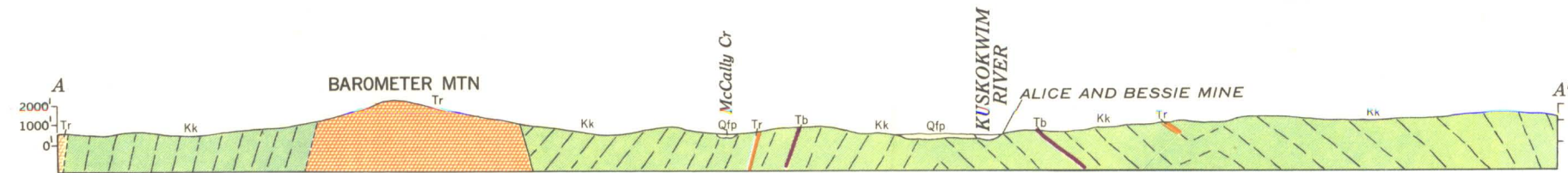
55
Strike and dip of beds

--- Axis of anticline
Dashed where hypothetical

X
Mine or prospect

M R-5477 INTERIOR—GEOLOGICAL SURVEY, WASHINGTON, D. C.

Geology and topography by W. M. Cady and R. E. Wallace, assisted by R. V. Cushman and S. F. Johnson. Surveyed 1941-1942



GEOLOGIC MAP AND STRUCTURE SECTION OF THE SLEETMUTE AREA, CENTRAL KUSKOKWIM REGION, ALASKA



Contour interval 1000 feet
Datum is approximate mean sea level