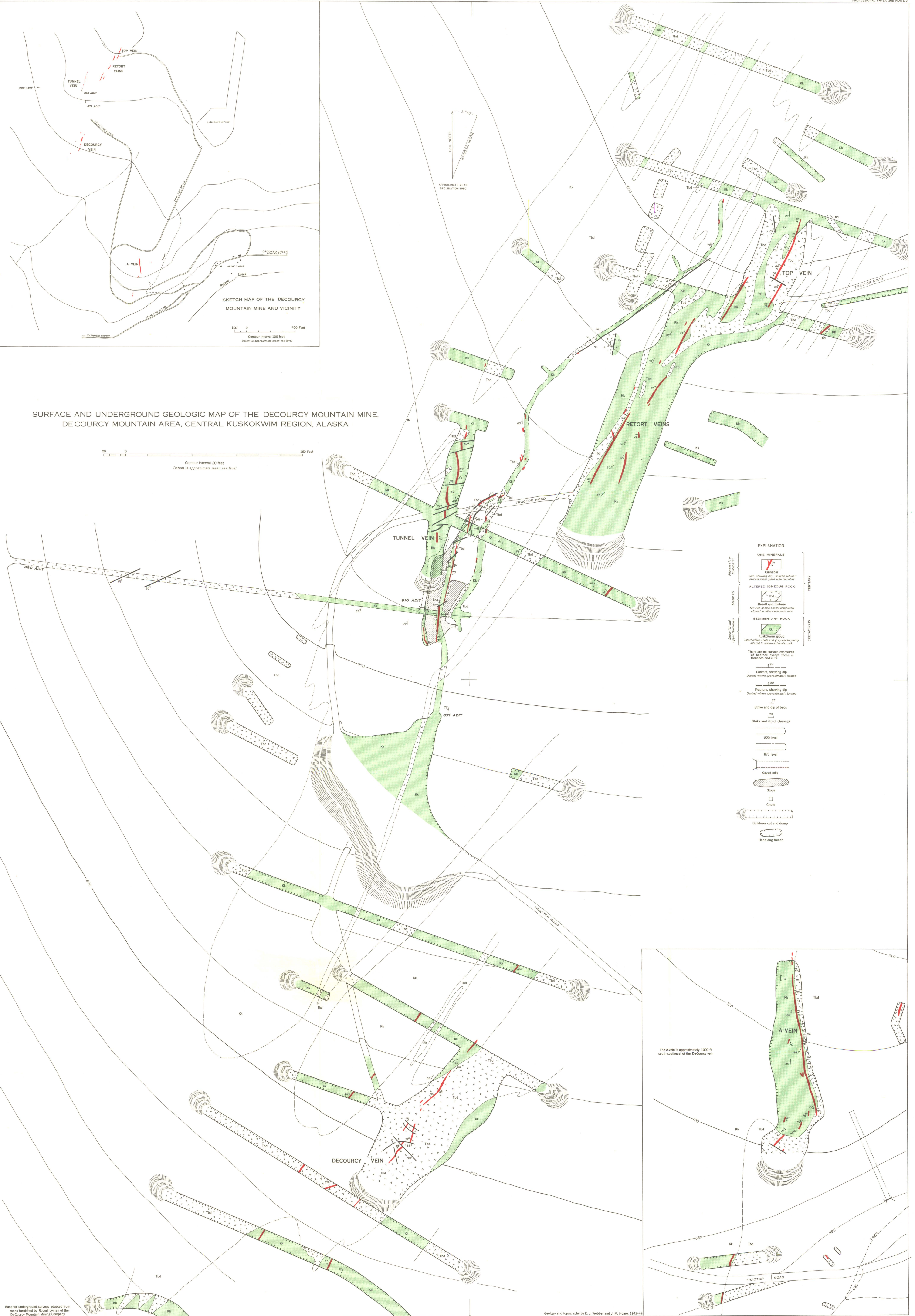


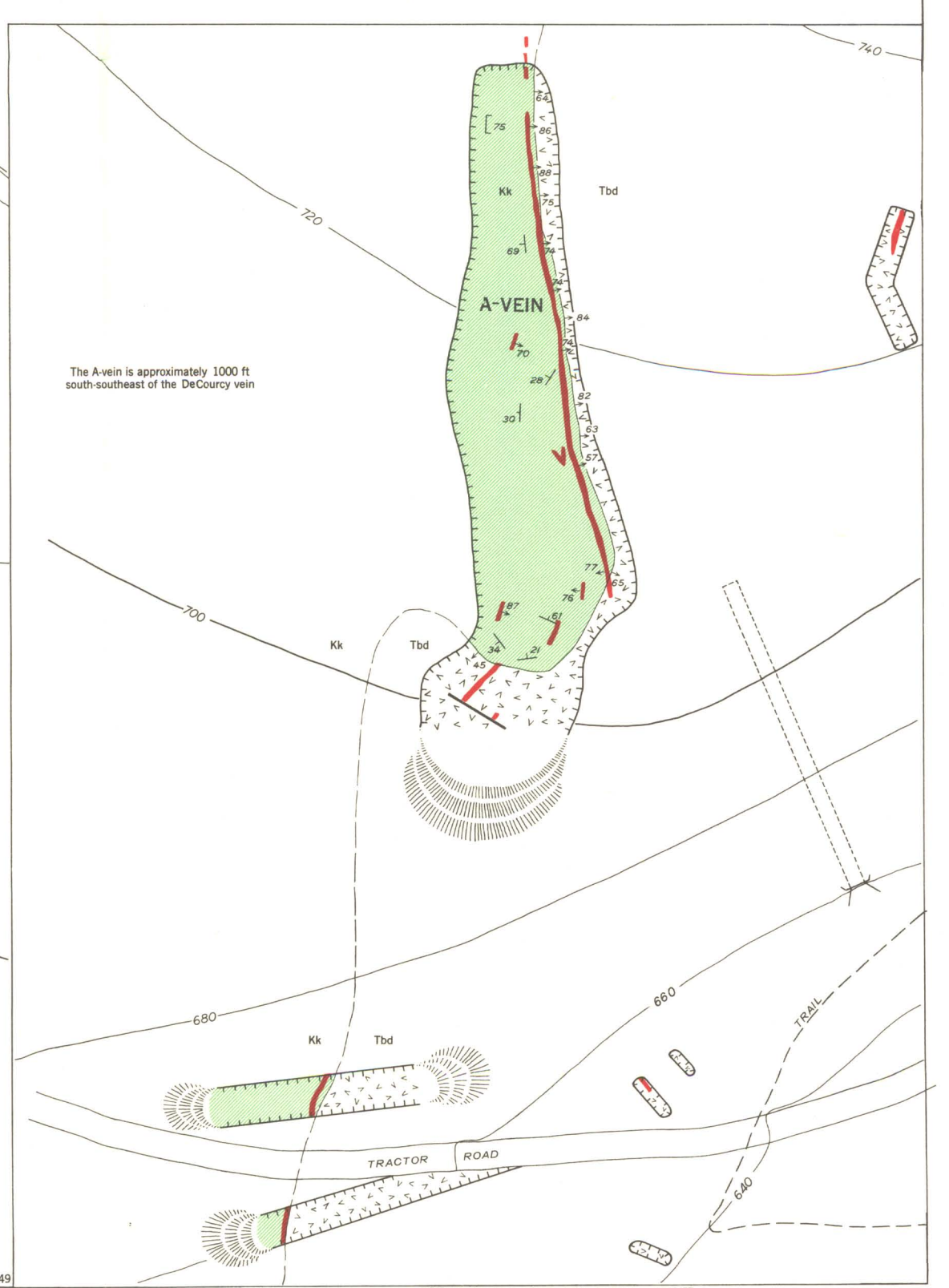
SURFACE AND UNDERGROUND GEOLOGIC MAP OF THE DECOURCY MOUNTAIN MINE,
DECOURCY MOUNTAIN AREA, CENTRAL KUSKOKWIM REGION, ALASKA

20 0 100 Feet
Contour interval 20 feet
Datum is approximate mean sea level



EXPLANATION

Upper Vein (T)	ONE MINERAL	TERTIARY
Lower Vein (A)	Conobar	
Retort Vein (R)	Vein, showing dip; includes smaller branches above filled with conobar	TERTIARY
Decourcy Vein (D)	Vein, showing dip; includes smaller branches above filled with conobar	
Altered Igneous Rock (AI)	Altered igneous rock	TERTIARY
Sedimentary Rock (S)	Sedimentary rock	
Mudstone (M)	Mudstone group	CRETACEOUS
Shale and Gypsiferous Sandstone (SG)	Shale and gypsiferous sandstone partly altered to siliceous sandstone	
There are no surface exposures of bedrock, except those in trenches and cuts		
64	Contact, showing dip	TERTIARY
68	Dashed where approximately located	
70	Fracture, showing dip	TERTIARY
75	Dashed where approximately located	
80	Strike and dip of beds	TERTIARY
85	Strike and dip of cleavage	
820 level	820 level	TERTIARY
871 level	871 level	
870 level	Cavel adit	TERTIARY
871 level	Slope	
871 level	Chute	TERTIARY
871 level	Build-up cut and dump	
871 level	Hand-dug trench	TERTIARY



Base for underground surveys, adapted from maps furnished by Robert Lyman of the Decourcy Mountain Mining Company

Geology and topography by E. J. Webber and J. M. Hoan, 1942-43