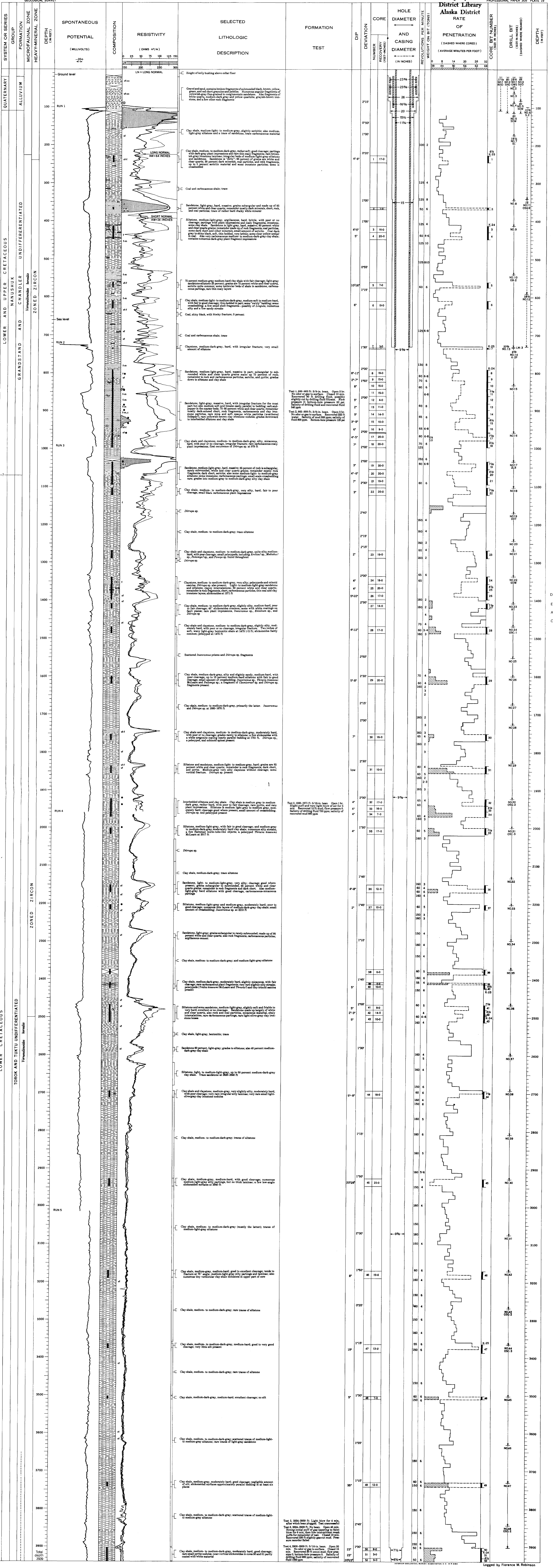


EXPLANATION

- Sandstone
 - Gravel
 - Silty sandstone
 - Calcareous sandstone
 - Siltstone
 - Sandy siltstone
 - Calcareous clay shale or claystone
 - Clay shale or claystone
 - Sandy clay shale or claystone
 - Silty clay shale or claystone
 - Calcareous siltstone
 - Clay siltstone
 - Coal or carbonaceous material
 - Bentonite
 - Cored interval
 - No samples recovered
 - Oil show
 - Gas show
 - Very fine grained
 - Fine grained
 - Medium grained
 - Coarse grained
 - Very coarse
 - Electrode spacing
- BIT SYMBOLS**
- DRILL BITS**
- Hughes LW-3
 - Hughes OSC-1
 - Hughes OSC-3
 - Hughes OSC-2
 - Hughes DWS
 - 2LB
 - Reed 2 liquid blast
 - Reed hole opener
 - AT
 - Reed 1
 - OB-2
 - Security OB-2
 - SC
 - Security-C
 - 150
 - Security hole opener
 - 50W
 - Security GW
 - 50T
 - Smith DDT
 - K-2P
 - Smith K-2P
 - 5-2
 - Smith 2
- CORE BITS**
- Reed K-24, hard formation
 - K-25
 - Reed K-25, soft formation
- Location: Lat 67°57'58" N
Long 151°06'02" W
Elevation: Kelly building, 460 feet
Ground, 645 feet
Spudded: May 1, 1962
Completed: August 8, 1962
Total depth: 3,339 feet
Status: Dry and abandoned
- Drilling and engineering data compiled from records of Arctic Contractors
Electric log by Schlumberger Well Surveying Corporation
All depths are measured from the top of the Kelly bushing
Colors were determined by comparison of dry samples with the National Research Council Rock Color Chart, 1948



GRANDSTAND TEST WELL 1, ALASKA

Logged by Florence M. Robinson