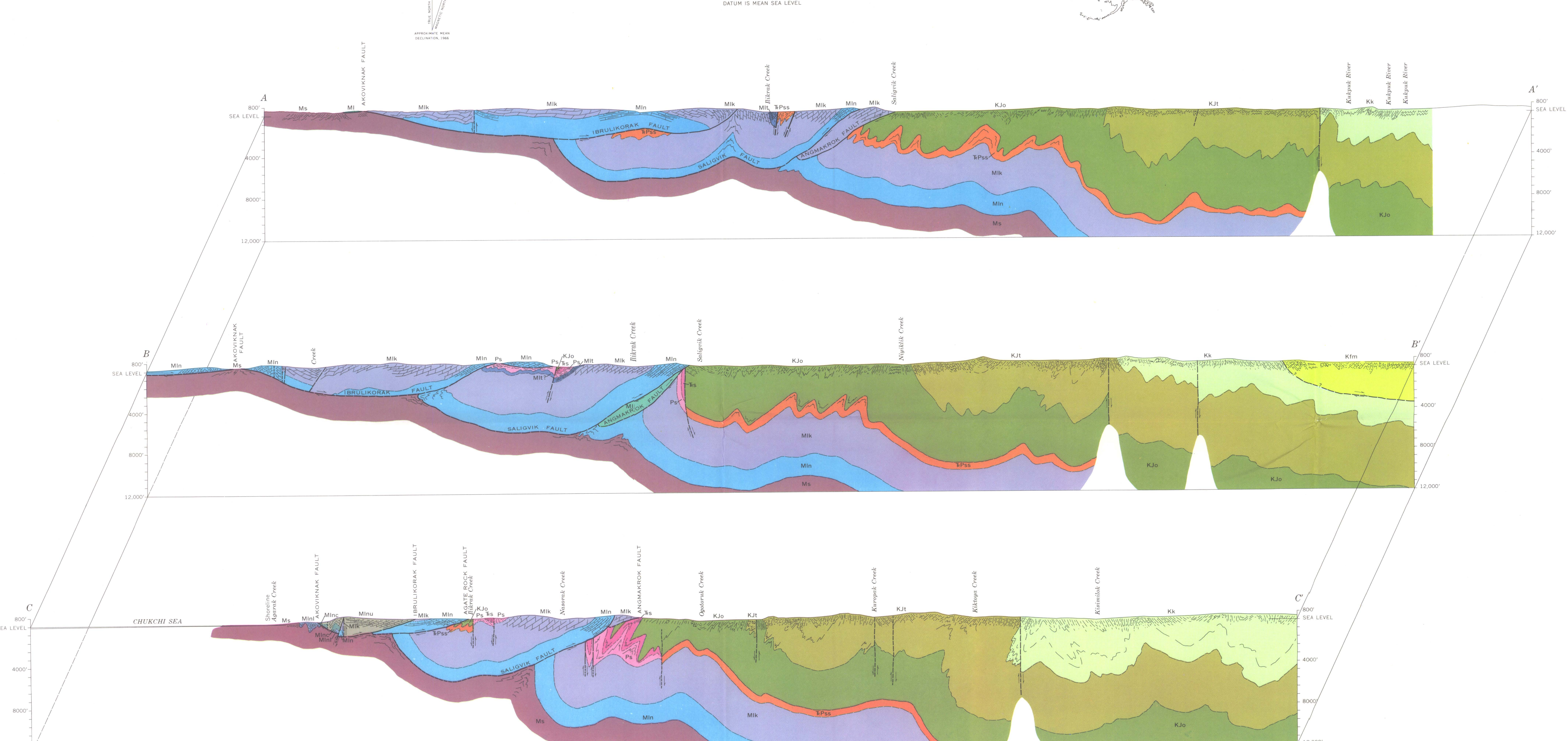


Base from Army Map Service Point Hope A-2 quadrangle (1:63,360), published by U.S. Geological Survey, 1952, and from Army Map Service manuscript maps of Point Hope A-1, B-1, and B-2 quadrangles (1:50,000).
Transverse Mercator projection
1929 North American datum

SCALE 1:63,360
MILES
KILOMETERS

Geologic map by R. H. Campbell, Robert Ruchoshorn, G. L. Samsburg, and D. W. Scott, 1958, and by R. H. Campbell and D. R. Curry, 1959 and 1960.



GEOLOGIC MAP AND STRUCTURE SECTIONS OF THE AREA IN THE VICINITY OF THE CHARIOT SITE, LISBURNE PENINSULA, NORTHWESTERN ALASKA