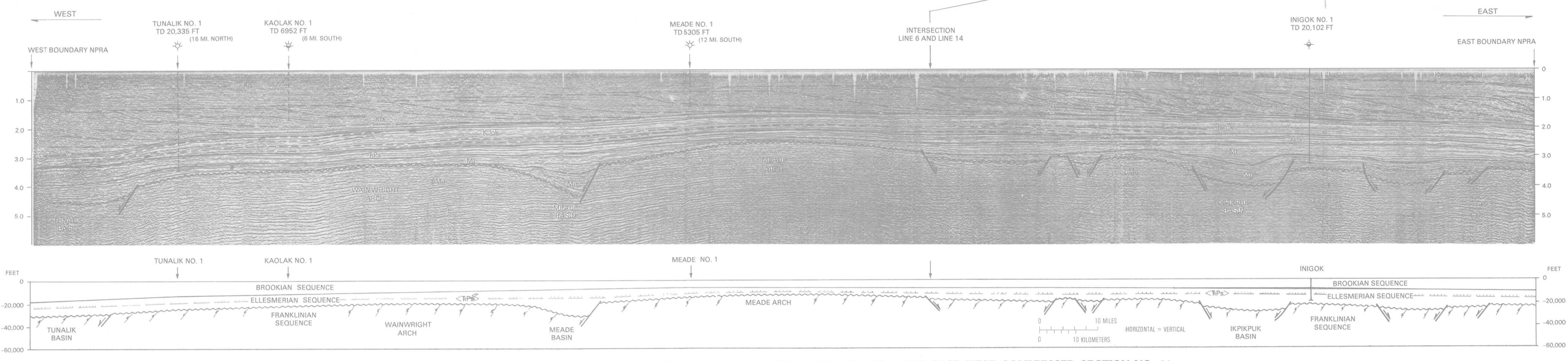
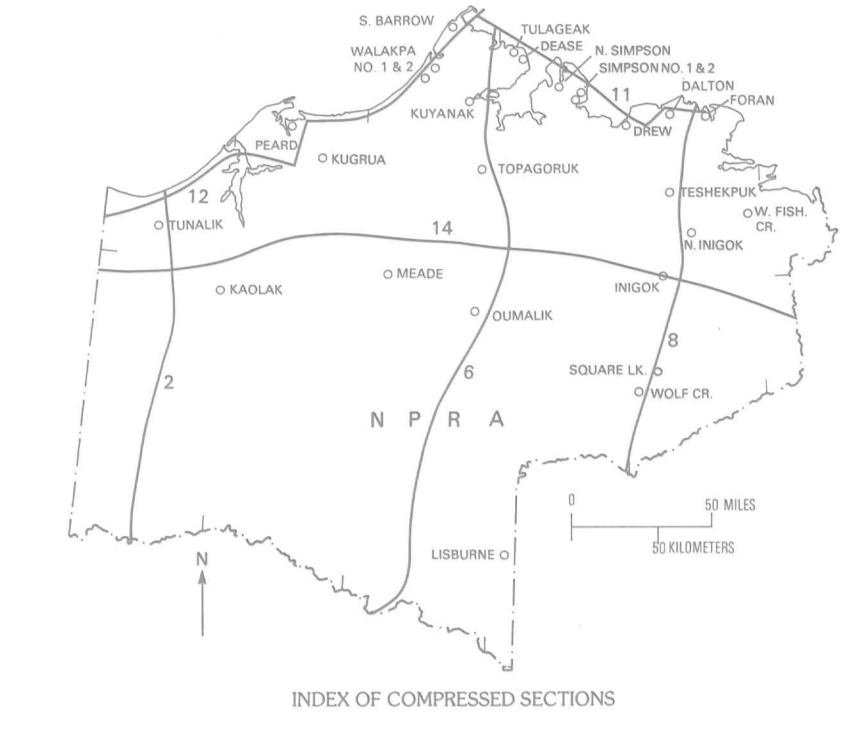


NORTH-SOUTH  
COMPRESSED  
SECTION  
NO. 6  
LINES  
475-79  
47X-78  
47-78  
624-79

HORIZONTAL SCALE  
0 10 MILES  
0 10 KILOMETERS

VERTICAL EXAGGERATION APPROX. 4.1



EAST-WEST  
COMPRESSED  
SECTION  
NO. 14  
LINES  
56-76  
58-75

HORIZONTAL SCALE  
0 10 MILES  
0 10 KILOMETERS

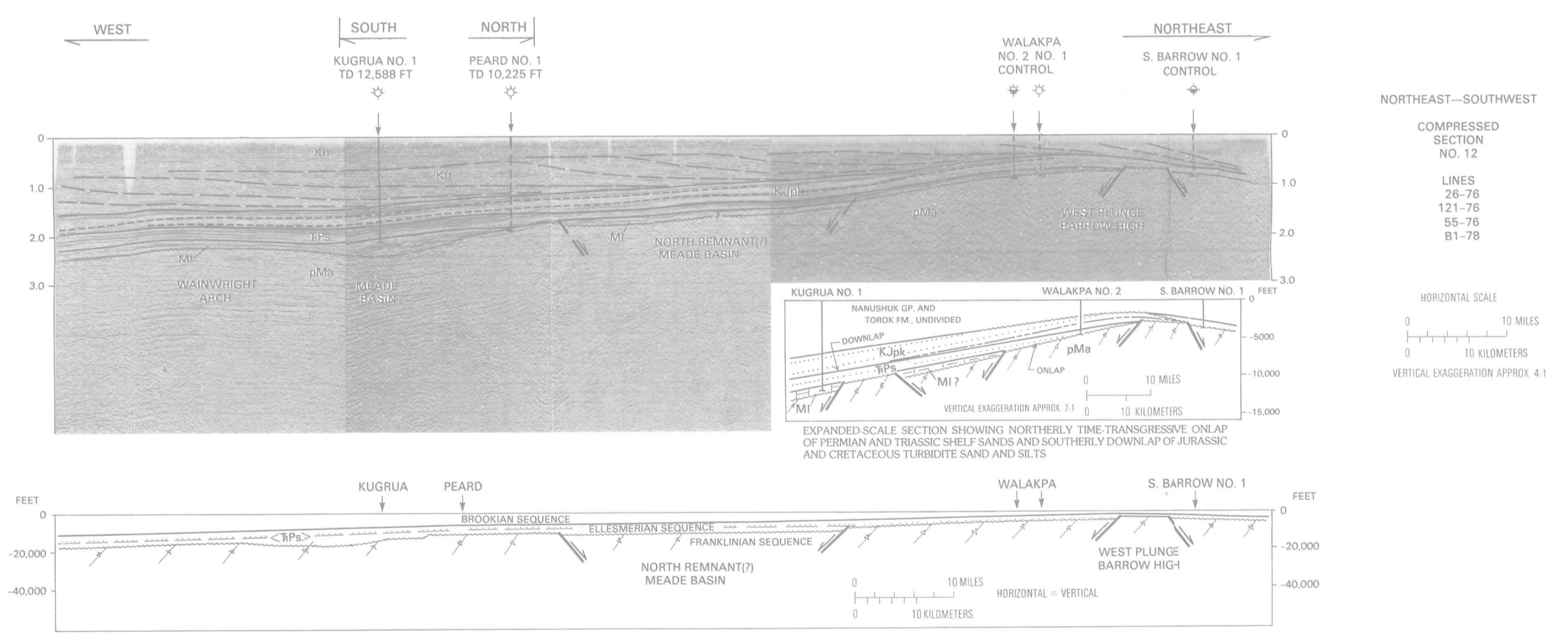
VERTICAL EXAGGERATION APPROX. 4.1

REGIONAL REFLECTION SEISMIC LINES FOR NORTH-SOUTH COMPRESSED SECTION NO. 6 AND EAST-WEST COMPRESSED SECTION NO. 14

EXPLANATION

	COLVILLE GROUP (CRET.)	Kc
BROOKIAN SEQUENCE	NANUSHUK GROUP (CRET.)	Kn
	FORTRESS MOUNTAIN AND TOROK FORMATIONS, UNDIVIDED (CRETACEOUS)	Kr
	LATE*	K,jpk
ELLESMERIAN SEQUENCE	PEBBLE SHALE UNIT (CRETACEOUS) AND KINGAK SHALE (CRETACEOUS AND JURASSIC), UNDIVIDED	K,jpk
	MIDDLE*	Sp
	EARLY*	Me
FRANKLINIAN SEQUENCE	Endicott Group (Permian to Mississippian)	Me
	Argillite (pre-Mississippian)	pMa

\*INFORMAL DIVISION

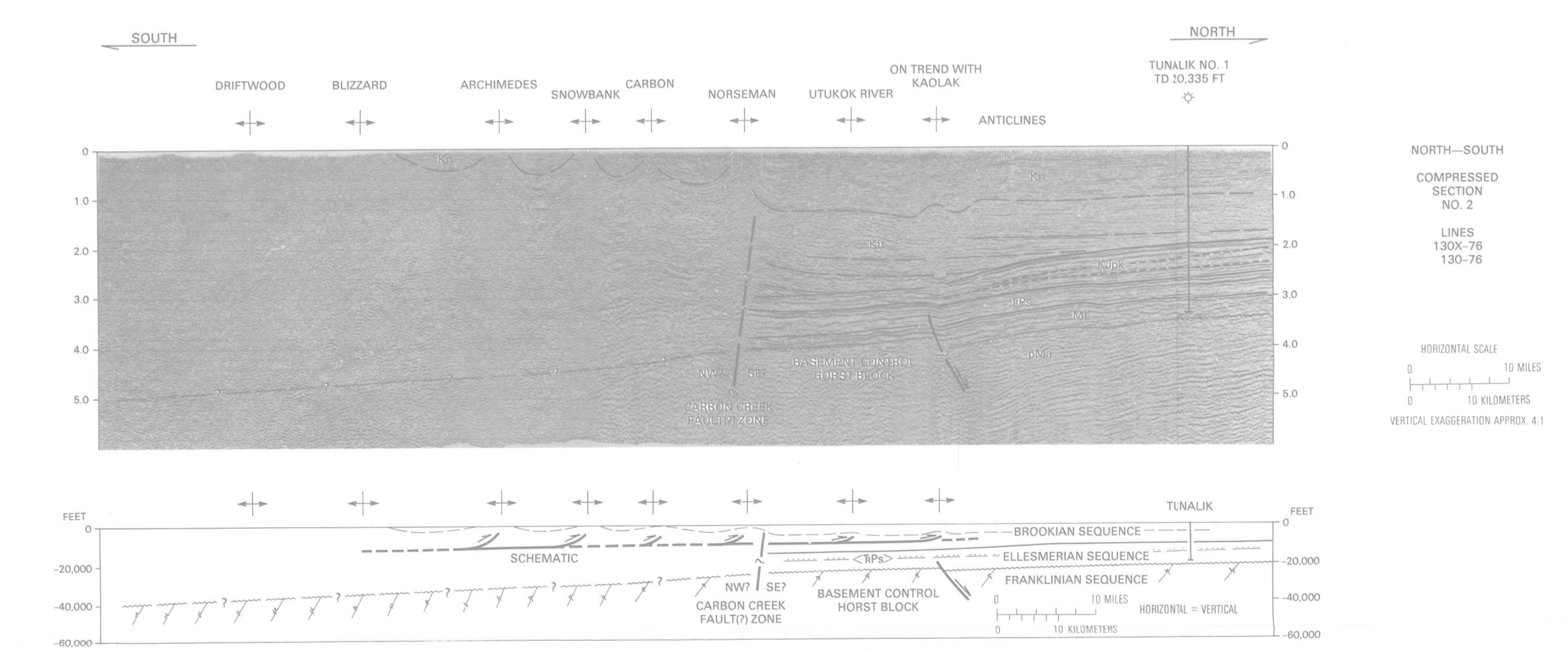


NORTHEAST-SOUTHWEST  
COMPRESSED  
SECTION  
NO. 12  
LINES  
20-76  
121-76  
55-76  
81-76

HORIZONTAL SCALE  
0 10 MILES  
0 10 KILOMETERS

VERTICAL EXAGGERATION APPROX. 4.1

REGIONAL REFLECTION SEISMIC LINES FOR NORTHEAST-SOUTHWEST COMPRESSED SECTION NO. 12 (MODIFIED) AND NORTH-SOUTH COMPRESSED SECTION NO. 2

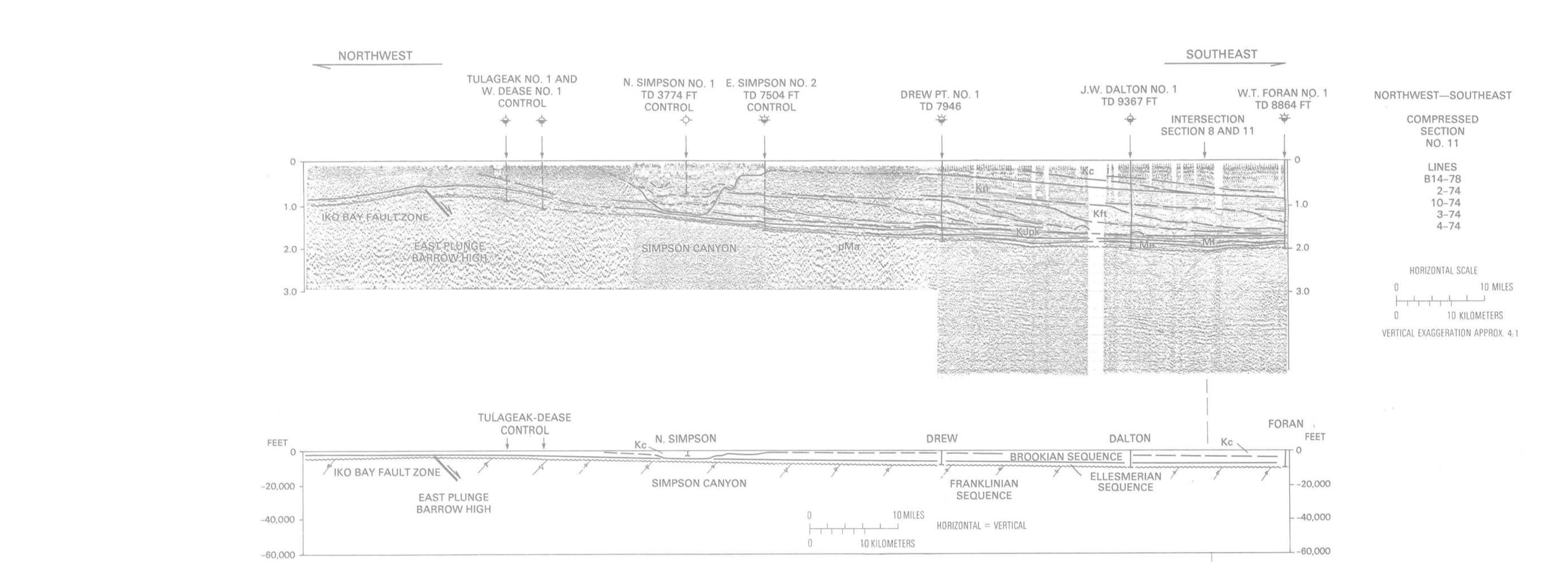


NORTH-SOUTH  
COMPRESSED  
SECTION  
NO. 2  
LINES  
130V-76  
130-76

HORIZONTAL SCALE  
0 10 MILES  
0 10 KILOMETERS

VERTICAL EXAGGERATION APPROX. 4.1

REGIONAL REFLECTION SEISMIC LINES FOR NORTHWEST-SOUTHEAST COMPRESSED SECTION NO. 11 AND NORTH-SOUTH COMPRESSED SECTION NO. 8

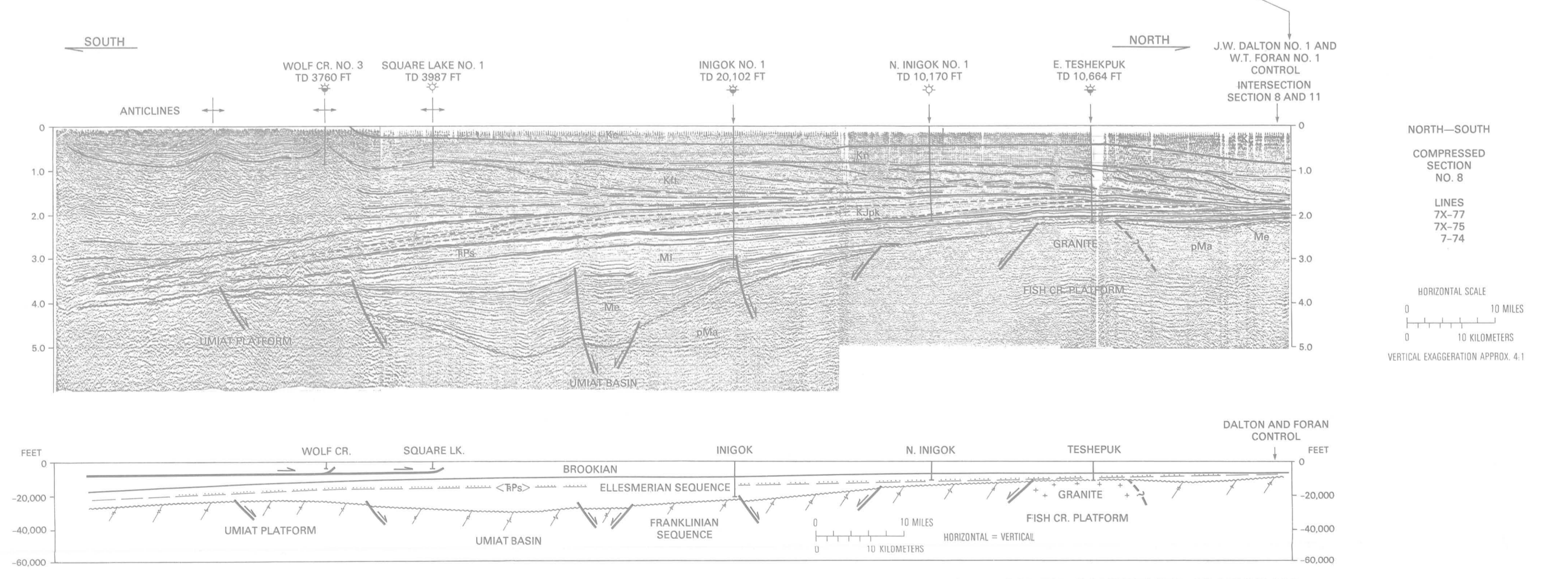


NORTHWEST-SOUTHEAST  
COMPRESSED  
SECTION  
NO. 11  
LINES  
814-78  
2-74  
10-74  
3-74  
4-74

HORIZONTAL SCALE  
0 10 MILES  
0 10 KILOMETERS

VERTICAL EXAGGERATION APPROX. 4.1

REGIONAL REFLECTION SEISMIC LINES FOR NORTHWEST-SOUTHEAST COMPRESSED SECTION NO. 11 AND NORTH-SOUTH COMPRESSED SECTION NO. 8



NORTH-SOUTH  
COMPRESSED  
SECTION  
NO. 8  
LINES  
7X-77  
7X-75  
7-74

HORIZONTAL SCALE  
0 10 MILES  
0 10 KILOMETERS

VERTICAL EXAGGERATION APPROX. 4.1

SELECTED STRUCTURAL AND STRATIGRAPHIC FEATURES INTERPRETED FROM REGIONAL REFLECTION SEISMIC LINES IN THE NATIONAL PETROLEUM RESERVE IN ALASKA