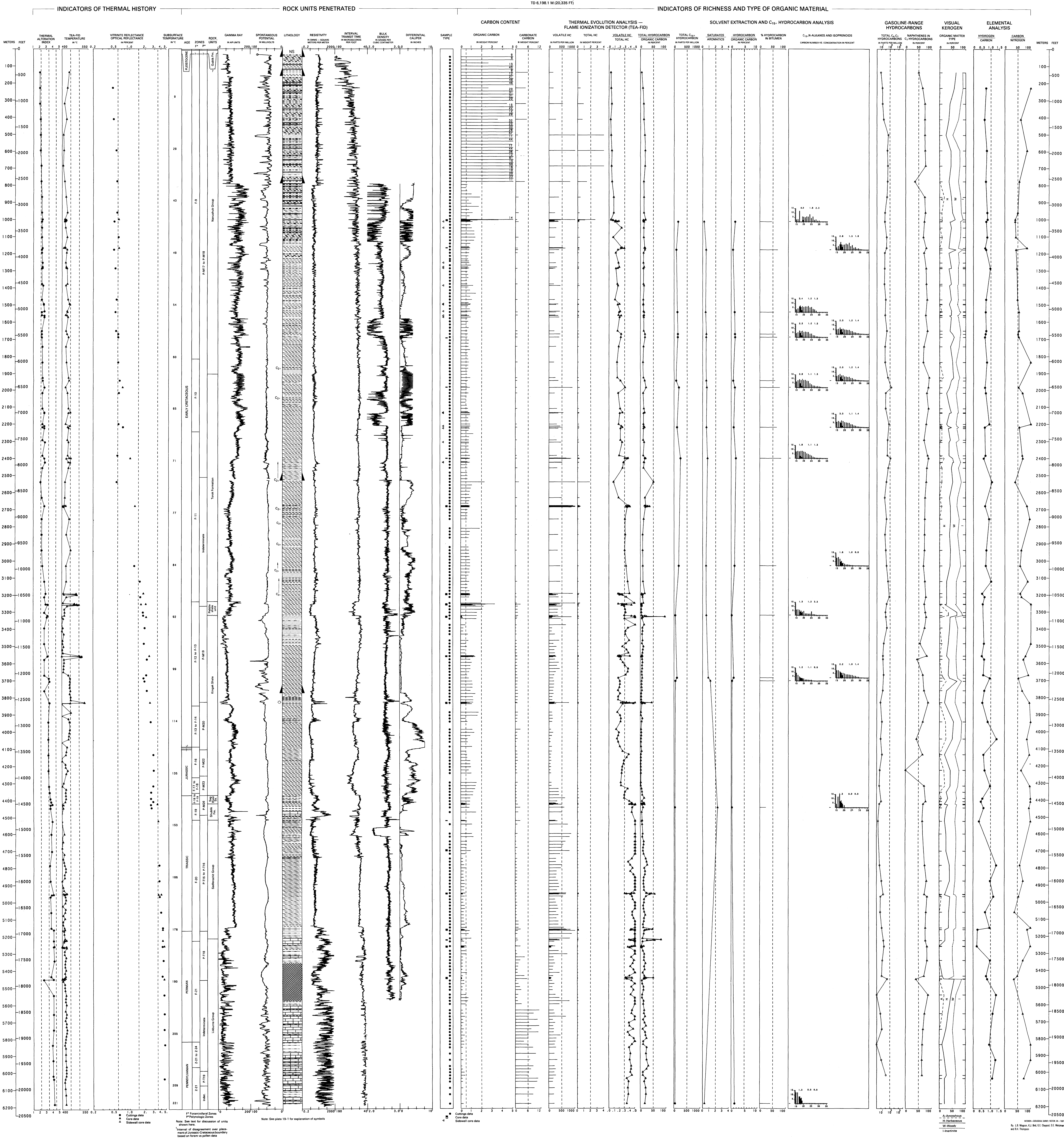


TUNALIK NO. 1

API NO. 60-301-20001
SEC. 20, T. 10 N., R. 36 W., 14M
LAT. 70°12'21" N., LONG. 151°04'59" W.
ELEV. KB 33.6 M (110 FT)
TD 6,198.1 M (20305 FT)



GEOLOGY, GEOCHEMISTRY, AND HYDROCARBON
OCCURRENCE IN TUNALIK NO. 1 WELL, NORTH SLOPE, ALASKA