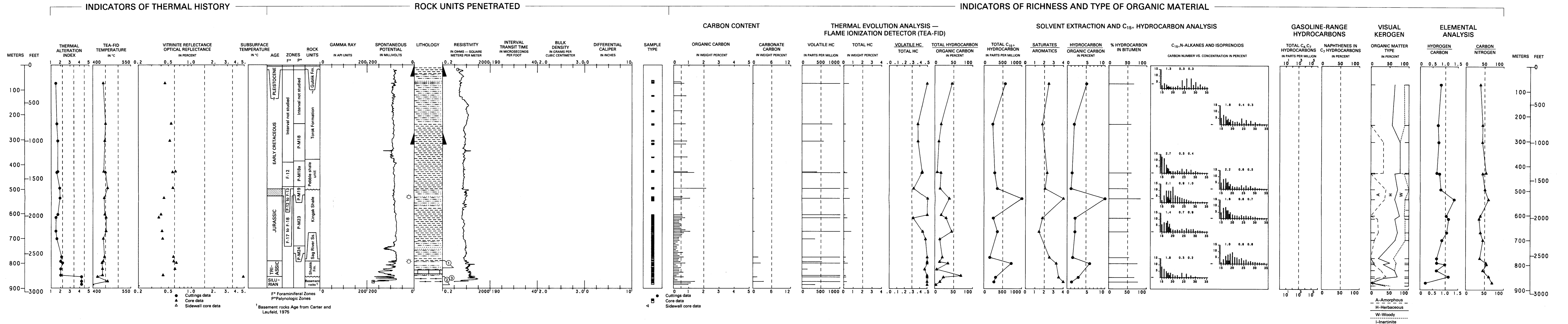


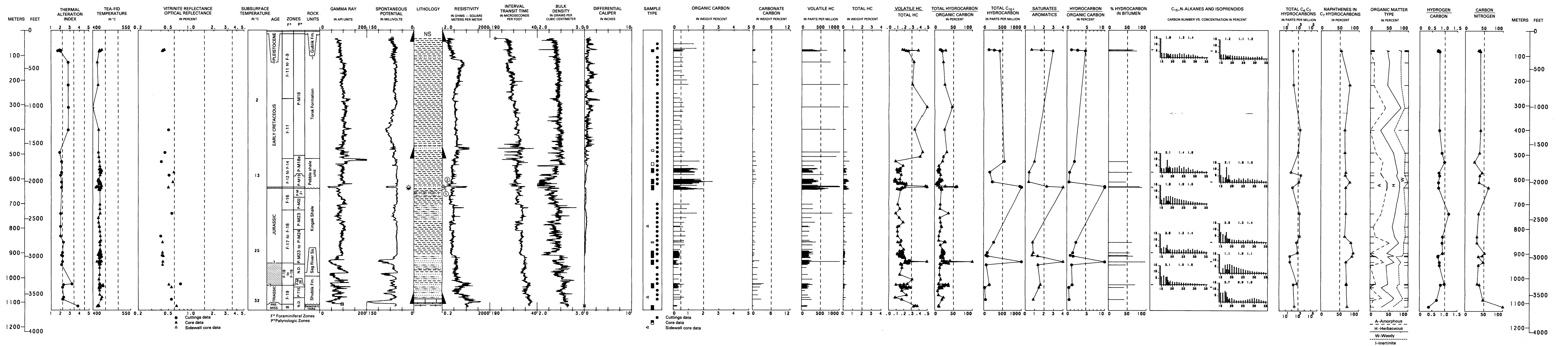
SOUTH BARROW NO. 3

API NO. 50-023-10011  
SEC 24, T. 21 N., R. 18 W., UM  
LAT 71°08'46" N., LONG 156°54'44" W.  
ELEV. KB 13.4 M (44 FT)  
TD 883.9 M (2,900 FT)



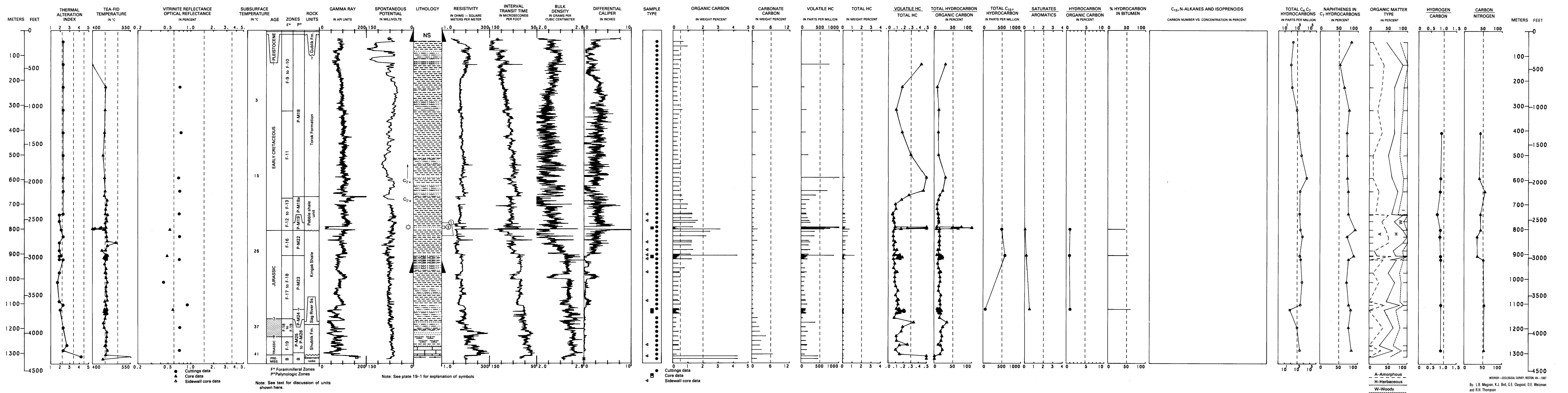
WALAKPA NO. 1

API NO. 50-023-20013  
SEC 3, T. 20 N., R. 18 W., UM  
LAT 71°05'58" N., LONG 156°53'04" W.  
ELEV. KB 15.2 M (50 FT)  
TD 1,174.4 M (3,856 FT)



WALAKPA NO. 2

API NO. 50-023-20019  
SEC 31, T. 20 N., R. 18 W., UM  
LAT 71°03' N., LONG 156°57'10" W.  
ELEV. KB 18.6 M (61 FT)  
TD 1,328.9 M (4,360 FT)



GEOLOGY, GEOCHEMISTRY, AND HYDROCARBON OCCURRENCE IN  
SOUTH BARROW NO. 3, WALAKPA NO. 1, AND WALAKPA NO. 2 WELLS, NORTH SLOPE, ALASKA