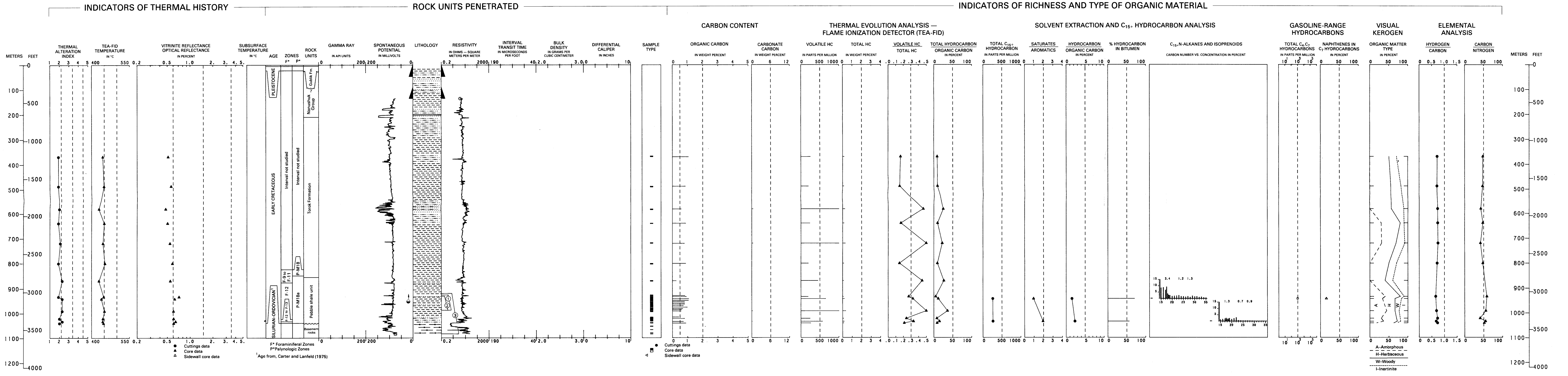


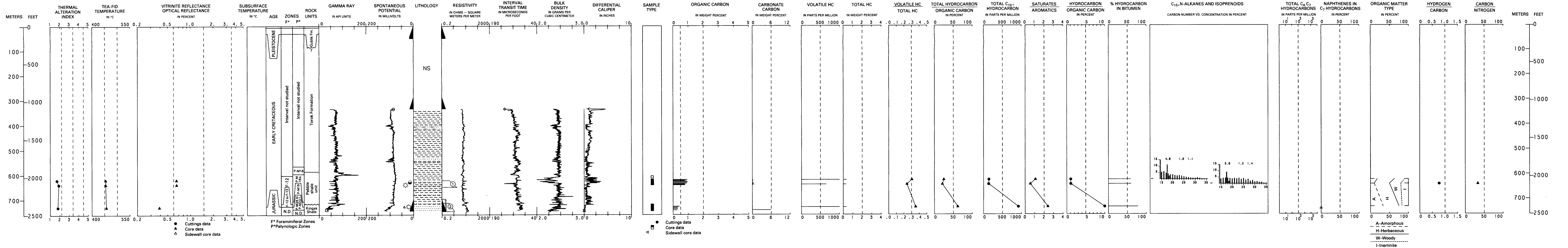
SOUTH BARROW NO. 1

API NO. 50-023-10009
SEC. 28, T. 23 N., R. 18 W., UM
LAT 71°19'12" N., LONG 156°42'16" W.
ELEV. KB 5.5 M (18 FT)
TD 1,083.0 M (3,553 FT)



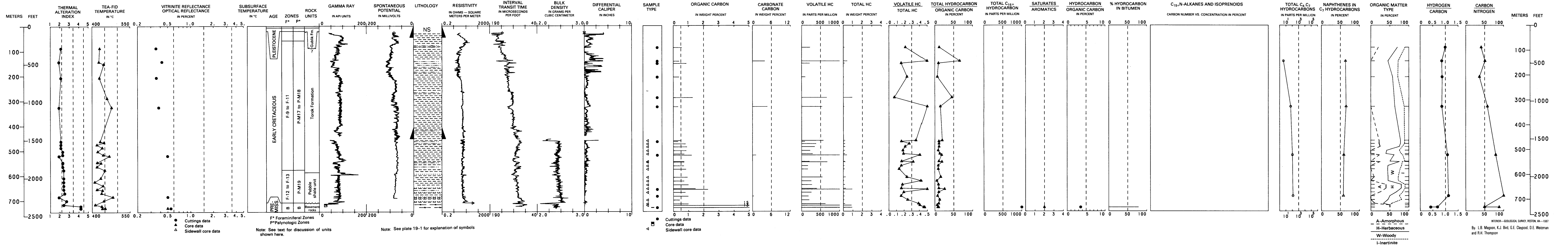
SOUTH BARROW NO. 9

API NO. 50-023-20003
SEC. 11, T. 22 N., R. 18 W., UM
LAT 71°16'04" N., LONG 156°36'53" W.
ELEV. KB 8.8 M (28 FT)
TD 746.8 M (2,450 FT)



SOUTH BARROW NO. 16

API NO. 50-023-20010
SEC. 1, T. 22 N., R. 18 W., UM
LAT 71°16'56" N., LONG 156°32'47" W.
ELEV. KB 9.1 M (30 FT)
TD 731.5 M (2,400 FT)



**GEOLOGY, GEOCHEMISTRY, AND HYDROCARBON OCCURRENCE IN
SOUTH BARROW NO. 1, SOUTH BARROW NO. 9, AND SOUTH BARROW NO. 16 WELLS, NORTH SLOPE, ALASKA**

U.S. GEOLOGICAL SURVEY, RESTON, VA 20192
By: L.B. Mayer, K.J. Bro. G.L. Dugan, D.E. Whelan
and R.A. Thompson