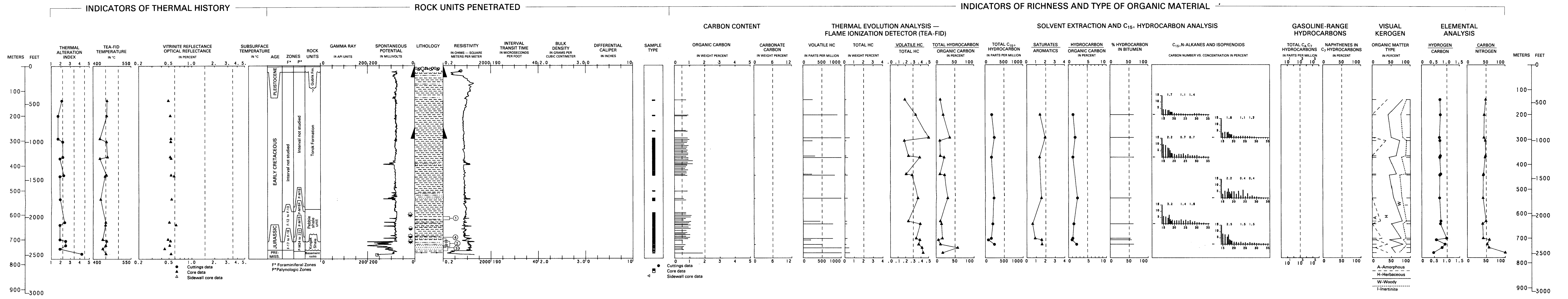


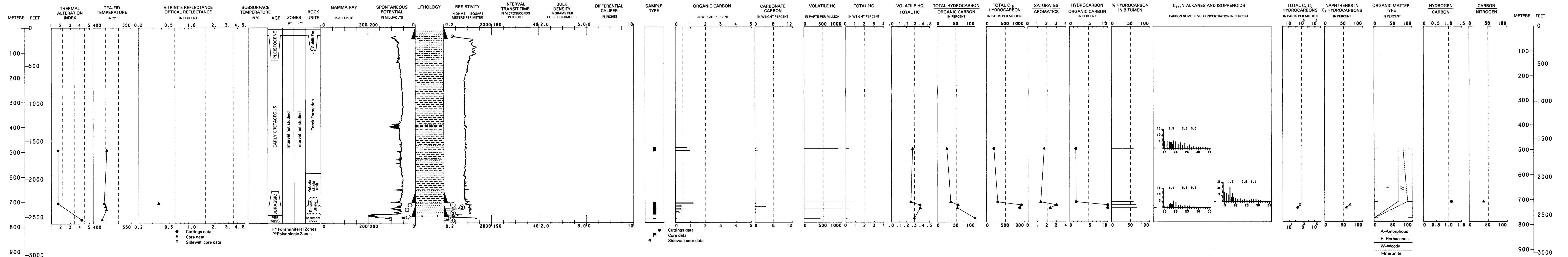
SOUTH BARROW NO. 2

API NO. 50-023-10010
SEC. 14, T. 22 N., R. 18 W., UM
LAT 71°15'49" N., LONG 156°38'03" W.
ELEV. KB 10.7 M (35 FT)
TD 763.5 M (2,505 FT)



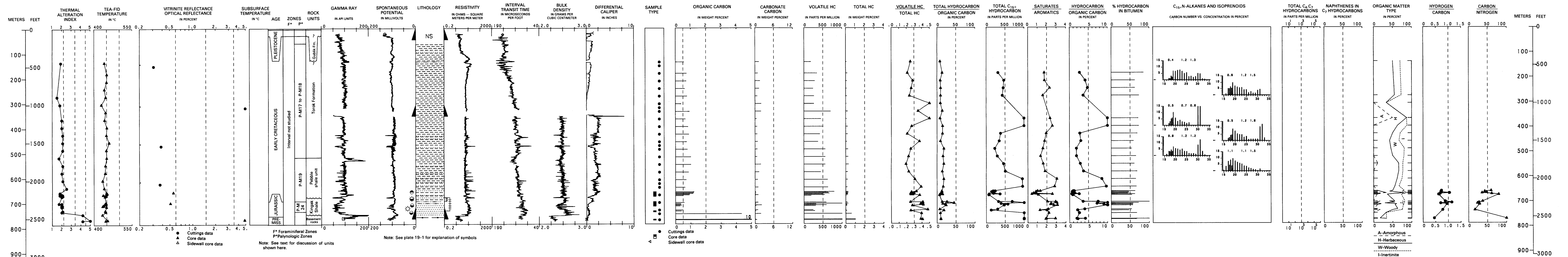
SOUTH BARROW NO. 4

API NO. 50-023-10012
SEC. 14, T. 22 N., R. 18 W., UM
LAT 71°19'51" N., LONG 156°37'50" W.
ELEV. KB 13.1 M (43 FT)
TD 773.6 M (2,538 FT)



SOUTH BARROW NO. 13

API NO. 50-023-20009
SEC. 14, T. 22 N., R. 18 W., UM
LAT 71°15'14" N., LONG 156°37'40" W.
ELEV. KB 12.2 M (40 FT)
TD 772.7 M (2,535 FT)



**GEOLOGY, GEOCHEMISTRY, AND HYDROCARBON OCCURRENCE IN
SOUTH BARROW NO. 2, SOUTH BARROW NO. 4, AND SOUTH BARROW NO. 13 WELLS, NORTH SLOPE, ALASKA**