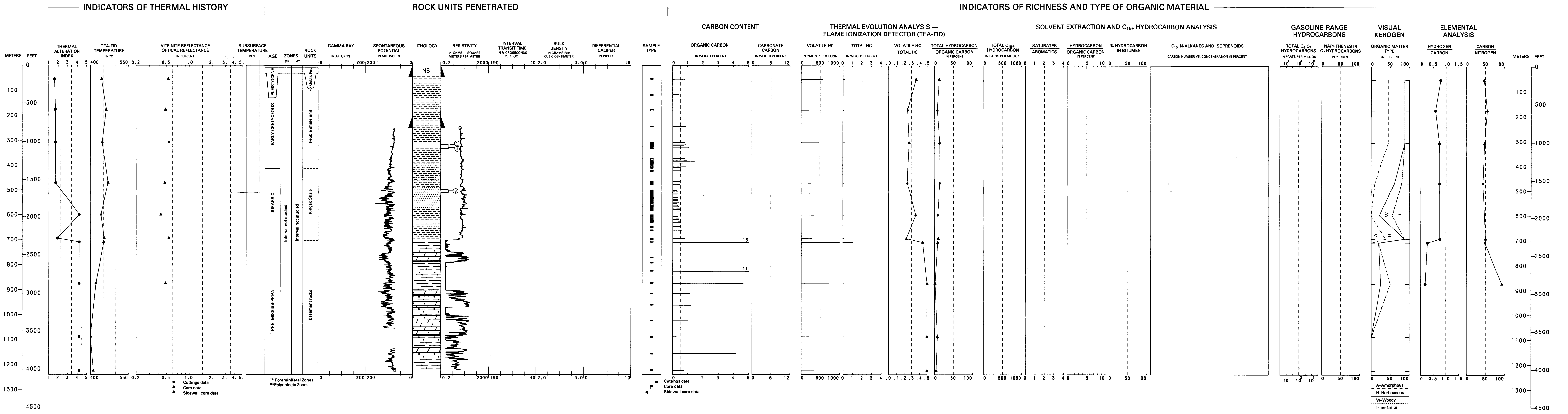


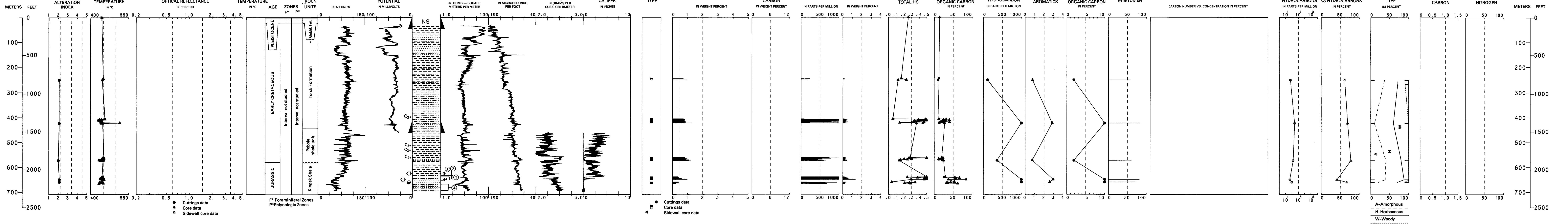
AVAK NO. 1

API NO. 50-023-10013  
SEC. 17, T. 22 N., R. 17 W., UM  
LAT 71°15'02" N., LONG 156°28'06" W.  
ELEV. KB 5.2 M (17 FT)  
TD 1,225.3 M (4,020 FT)



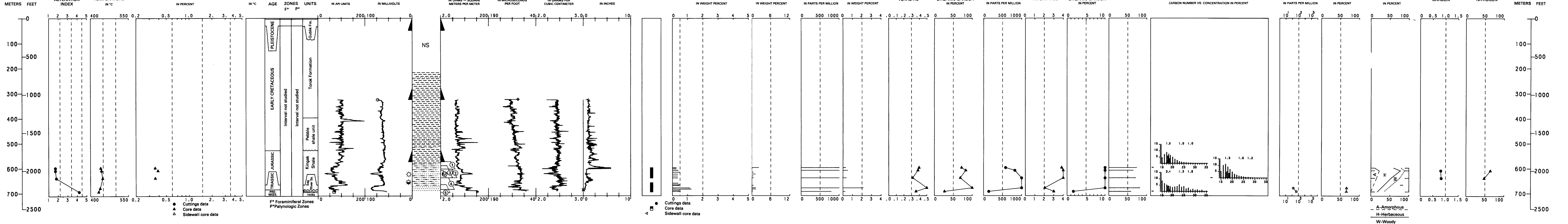
SOUTH BARROW NO. 15

API NO. 50-023-20016  
SEC. 23, T. 22 N., R. 17 W., UM  
LAT 71°14'59" N., LONG 156°20'42" W.  
ELEV. KB 9.1 M (30 FT)  
TD 694.3 M (2,278 FT)



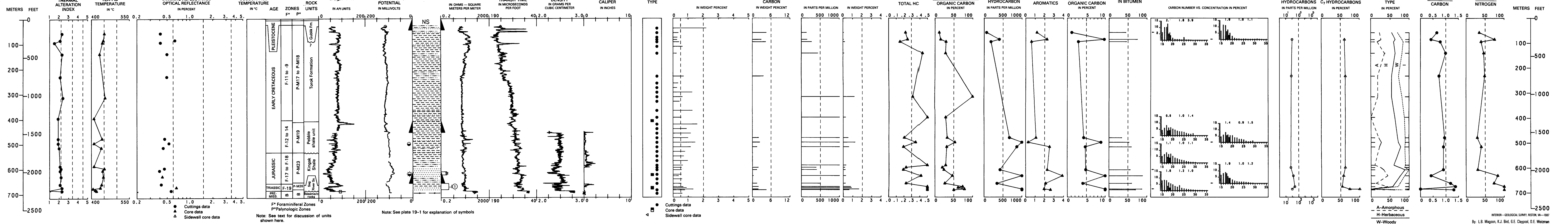
SOUTH BARROW NO. 12

API NO. 50-023-20008  
SEC. 23, T. 22 N., R. 17 W., UM  
LAT 71°14'14" N., LONG 156°20'16" W.  
ELEV. KB 11.6 M (38 FT)  
TD 696.5 M (2,285 FT)



SOUTH BARROW NO. 19

API NO. 50-023-20012  
SEC. 23, T. 22 N., R. 17 W., UM  
LAT 71°14'29" N., LONG 156°20'01" W.  
ELEV. KB 9.1 M (30 FT)  
TD 701.0 M (2,300 FT)



GEOLOGY, GEOCHEMISTRY, AND HYDROCARBON OCCURRENCE IN AVAK NO. 1,  
SOUTH BARROW NO. 15, SOUTH BARROW NO. 12, AND SOUTH BARROW NO. 19 WELLS, NORTH SLOPE, ALASKA