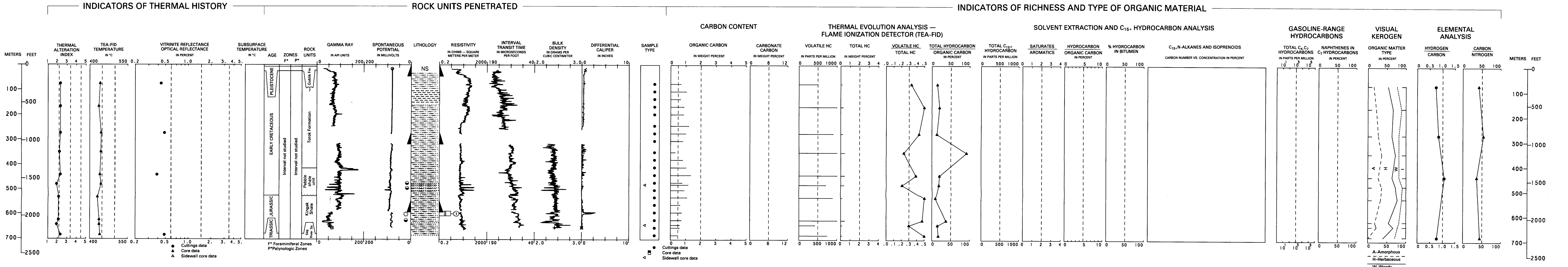


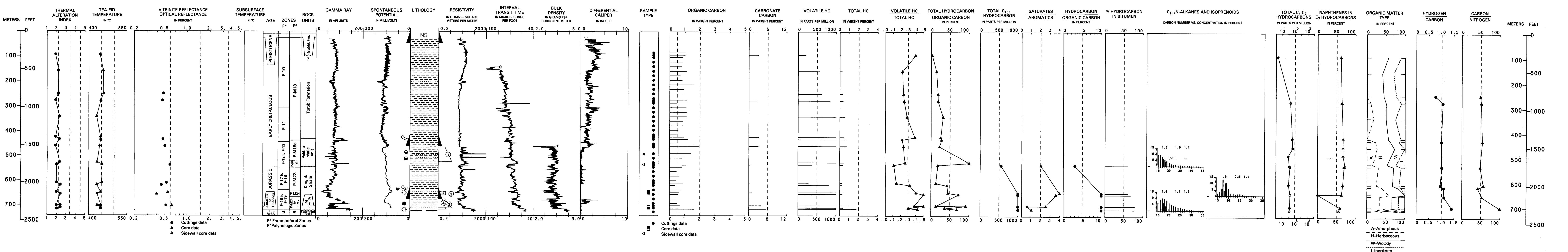
SOUTH BARROW NO. 14

API NO. 50-023-20009  
SEC. 25, T. 22 N., R. 17 W., UM  
LAT 71°13'59" N., LONG 156°18'11" W.  
ELEV. KB 9.4 M (31 FT)  
TD 687.9 M (2,257 FT)



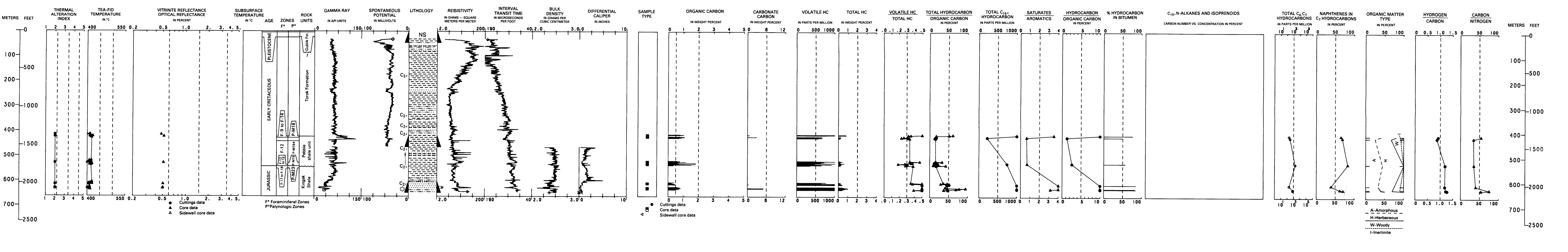
SOUTH BARROW NO. 17

API NO. 50-023-20011  
SEC. 30, T. 22 N., R. 16 W., UM  
LAT 71°14'01" N., LONG 156°15'34" W.  
ELEV. KB 10.1 M (33 FT)  
TD 726.0 M (2,382 FT)



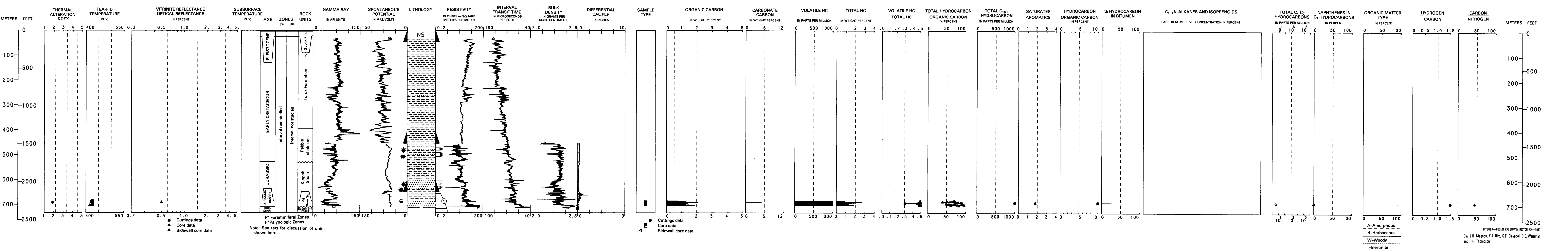
SOUTH BARROW NO. 18

API NO. 50-023-20017  
SEC. 24, T. 22 N., R. 17 W., UM  
LAT 71°14'23" N., LONG 156°18'41" W.  
ELEV. KB 9.1 M (30 FT)  
TD 647.7 M (2,125 FT)



SOUTH BARROW NO. 20

API NO. 50-023-20015  
SEC. 26, T. 22 N., R. 17 W., UM  
LAT 71°13'57" N., LONG 156°20'12" W.  
ELEV. KB 9.1 M (30 FT)  
TD 718.1 M (2,356 FT)



GEOLOGY, GEOCHEMISTRY, AND HYDROCARBON OCCURRENCE IN SOUTH BARROW NO. 14,  
SOUTH BARROW NO. 17, SOUTH BARROW NO. 18, AND SOUTH BARROW NO. 20 WELLS, NORTH SLOPE, ALASKA