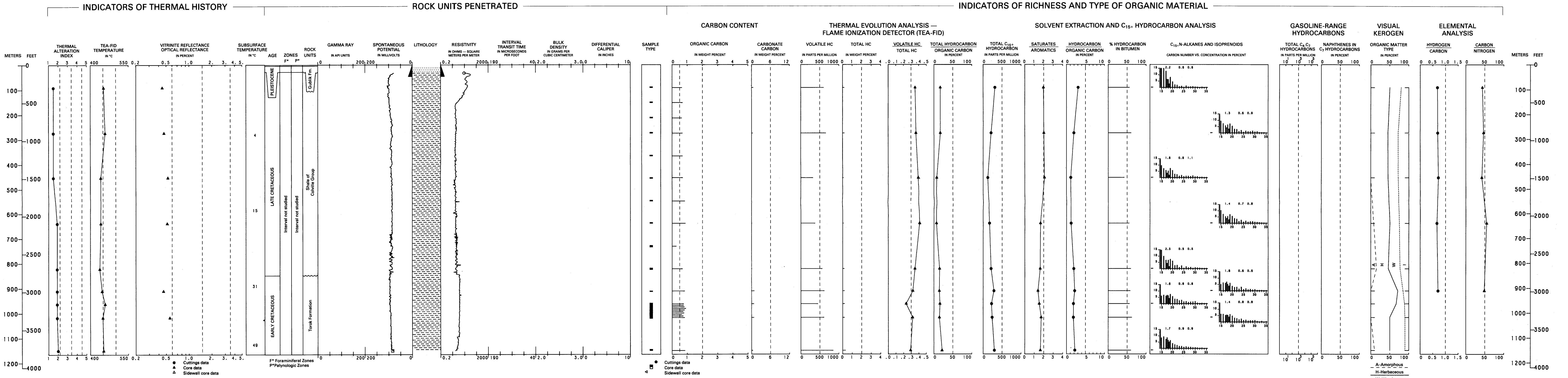


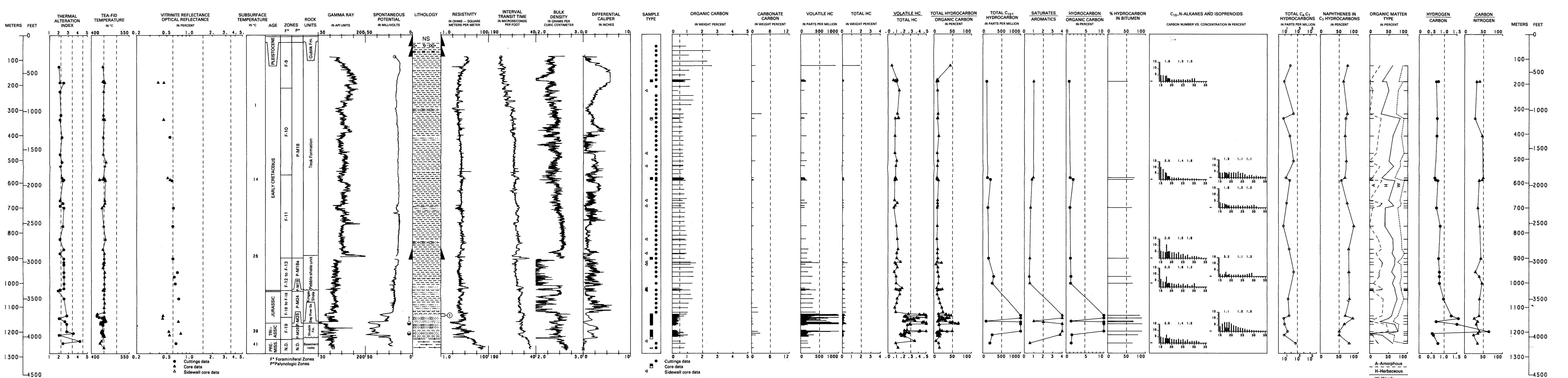
NORTH SIMPSON NO. 1

API NO. 50-023-10004
SEC. 26, T. 20 N., R. 12 W., UM
LAT 71°03'23" N., LONG 154°58'06" W.
ELEV. KB 9.4 M (31 FT)
TD 1,150.3 M (3,774 FT)



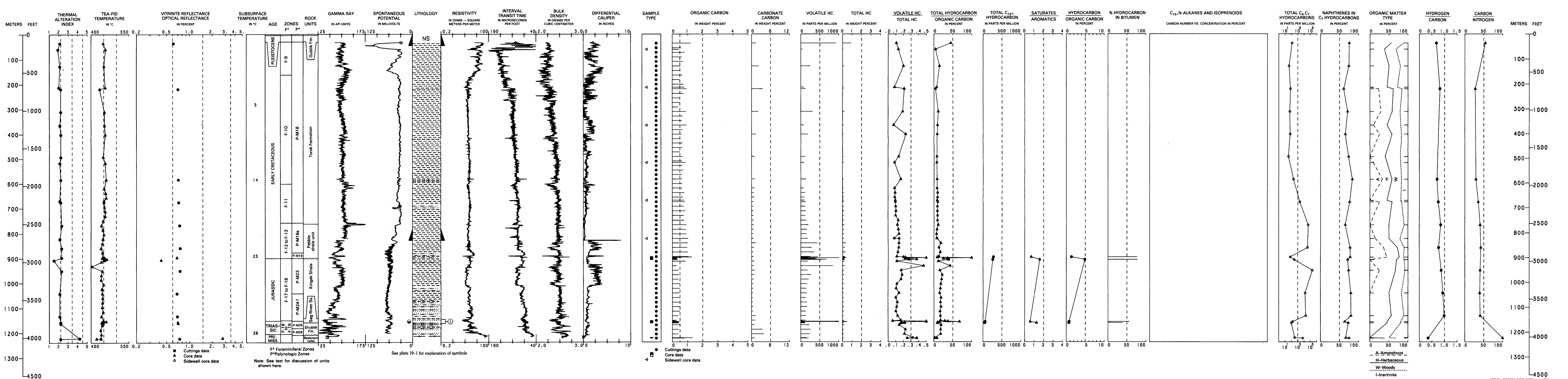
WEST DEASE NO. 1

API NO. 50-023-20014
SEC. 21, T. 21 N., R. 14 W., UM
LAT 71°09'33" N., LONG 155°37'45" W.
ELEV. KB 7.3 M (24 FT)
TD 1,271.9 M (4,173 FT)



TULAGEAK NO. 1

API NO. 50-023-20018
SEC. 7, T. 21 N., R. 14 W., UM
LAT 71°11'22" N., LONG 155°44'01" W.
ELEV. KB 8.2 M (27 FT)
TD 1,223.9 M (4,015 FT)



GEOLOGY, GEOCHEMISTRY, AND HYDROCARBON OCCURRENCE IN
NORTH SIMPSON NO. 1, WEST DEASE NO. 1, AND TULAGEAK NO. 1 WELLS, NORTH SLOPE, ALASKA