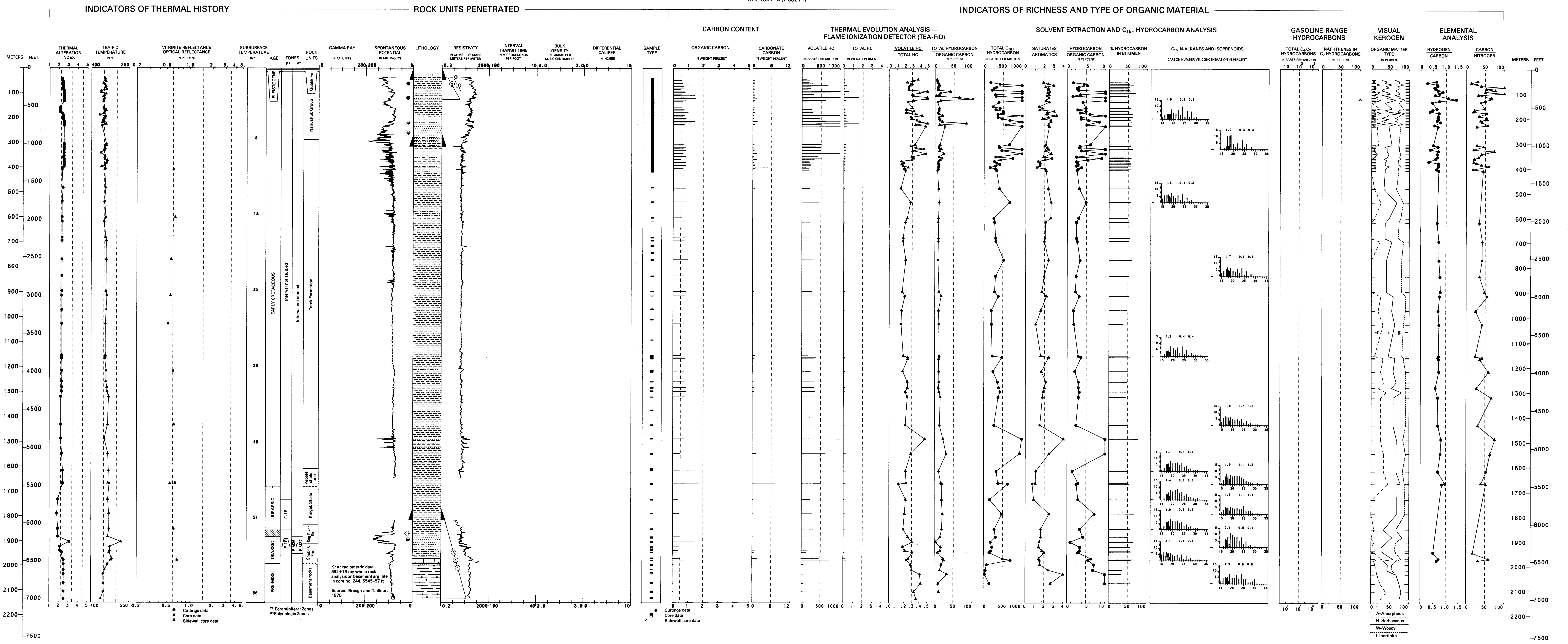


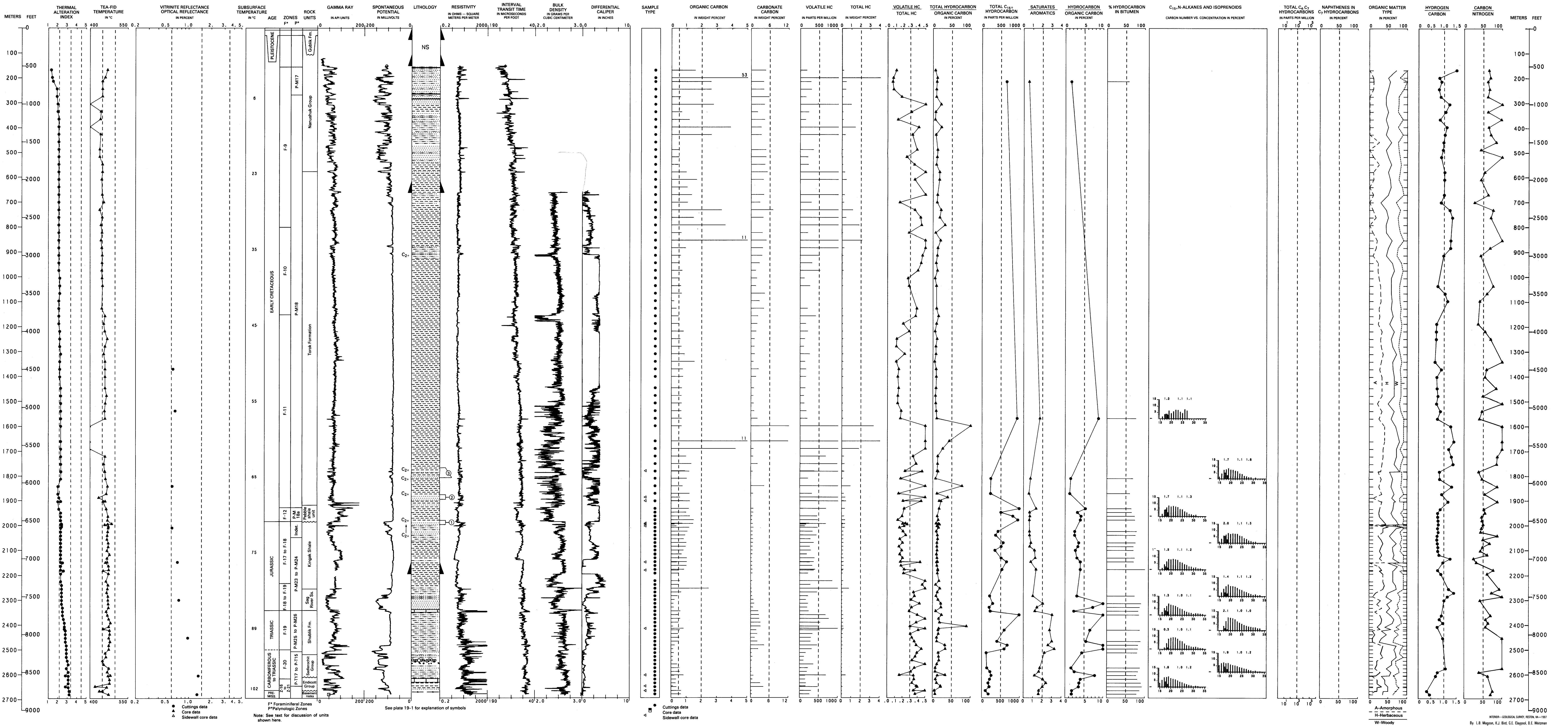
SIMPSON NO. 1

API NO. 50-278-10032  
SEC. 32, T. 19 N., R. 13 W., UM  
LAT 70°57'12" N., LONG 155°21'52" W.  
ELEV. 88.68 M (291 FT)  
TD 2,134.2 M (7,002 FT)



SOUTH SIMPSON NO. 1

API NO. 50-278-20001  
SEC. 22, T. 17 N., R. 12 W., UM  
LAT 70°48'20" N., LONG 154°58'55" W.  
ELEV. 87.6 M (287 FT)  
TD 2,680.7 M (8,795 FT)



GEOLOGY, GEOCHEMISTRY, AND HYDROCARBON OCCURRENCE IN  
SIMPSON NO. 1 AND SOUTH SIMPSON NO. 1 WELLS, NORTH SLOPE, ALASKA