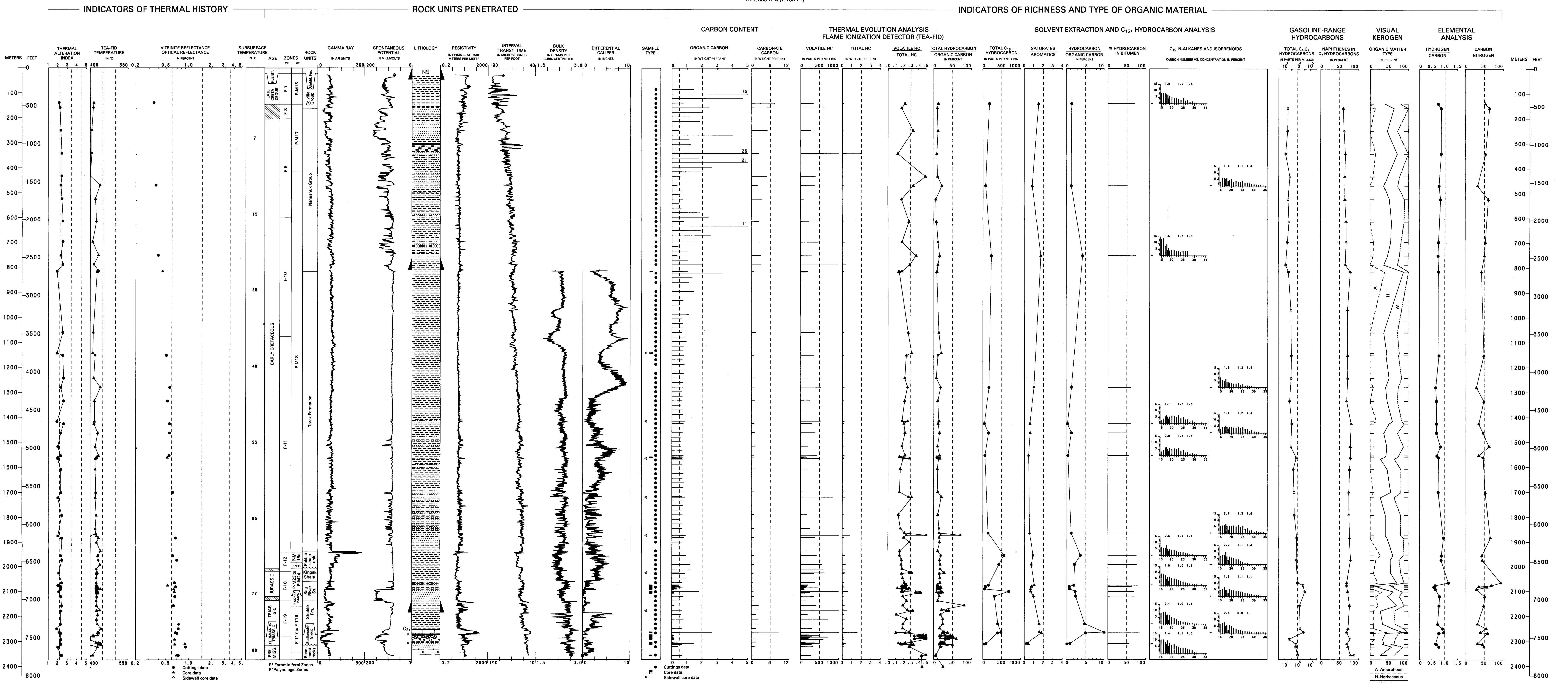


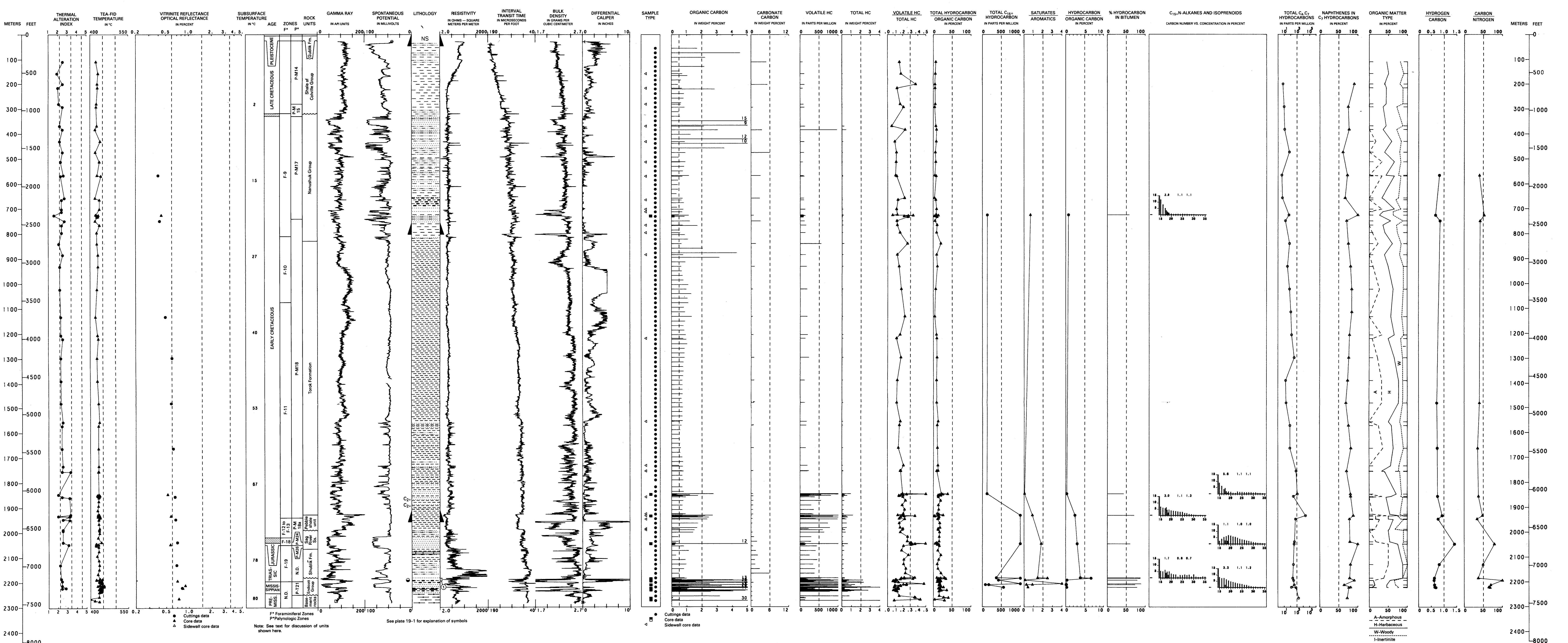
EAST SIMPSON NO. 1

API NO. 50-279-20005
SEC. 18, T. 18 N., R. 10 W., UM
LAT. 70°55'34" N., LONG. 154°37'05" W.
ELEV. KB 9.1 M (30 FT)
TD 2,358.9 M (7,739 FT)



EAST SIMPSON NO. 2

API NO. 50-279-20007
SEC. 23, T. 19 N., R. 11 W., UM
LAT. 70°58'43" N., LONG. 154°40'26" W.
ELEV. KB 12.2 M (40 FT)
TD 2,287.2 M (7,504 FT)



GEOLOGY, GEOCHEMISTRY, AND HYDROCARBON OCCURRENCE IN
EAST SIMPSON NO. 1 AND EAST SIMPSON NO. 2 WELLS, NORTH SLOPE, ALASKA