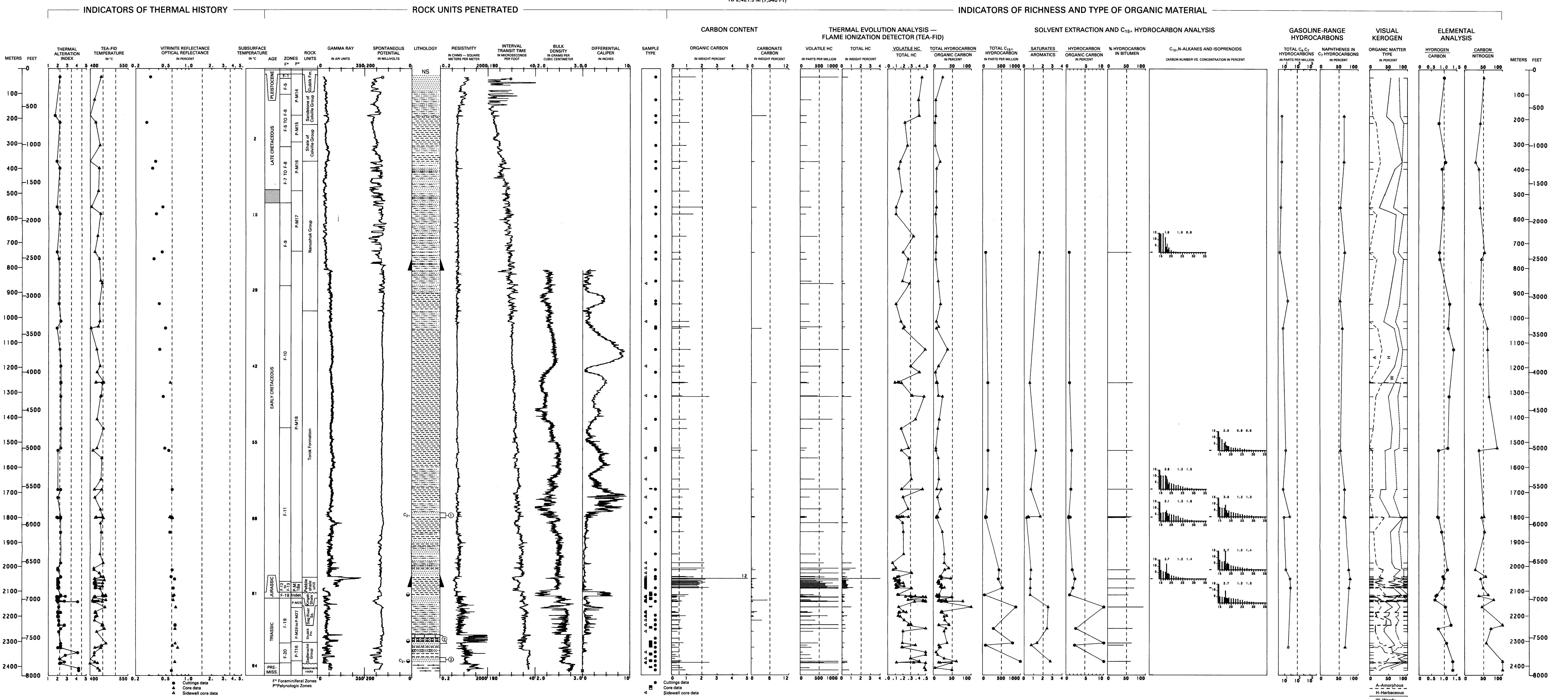


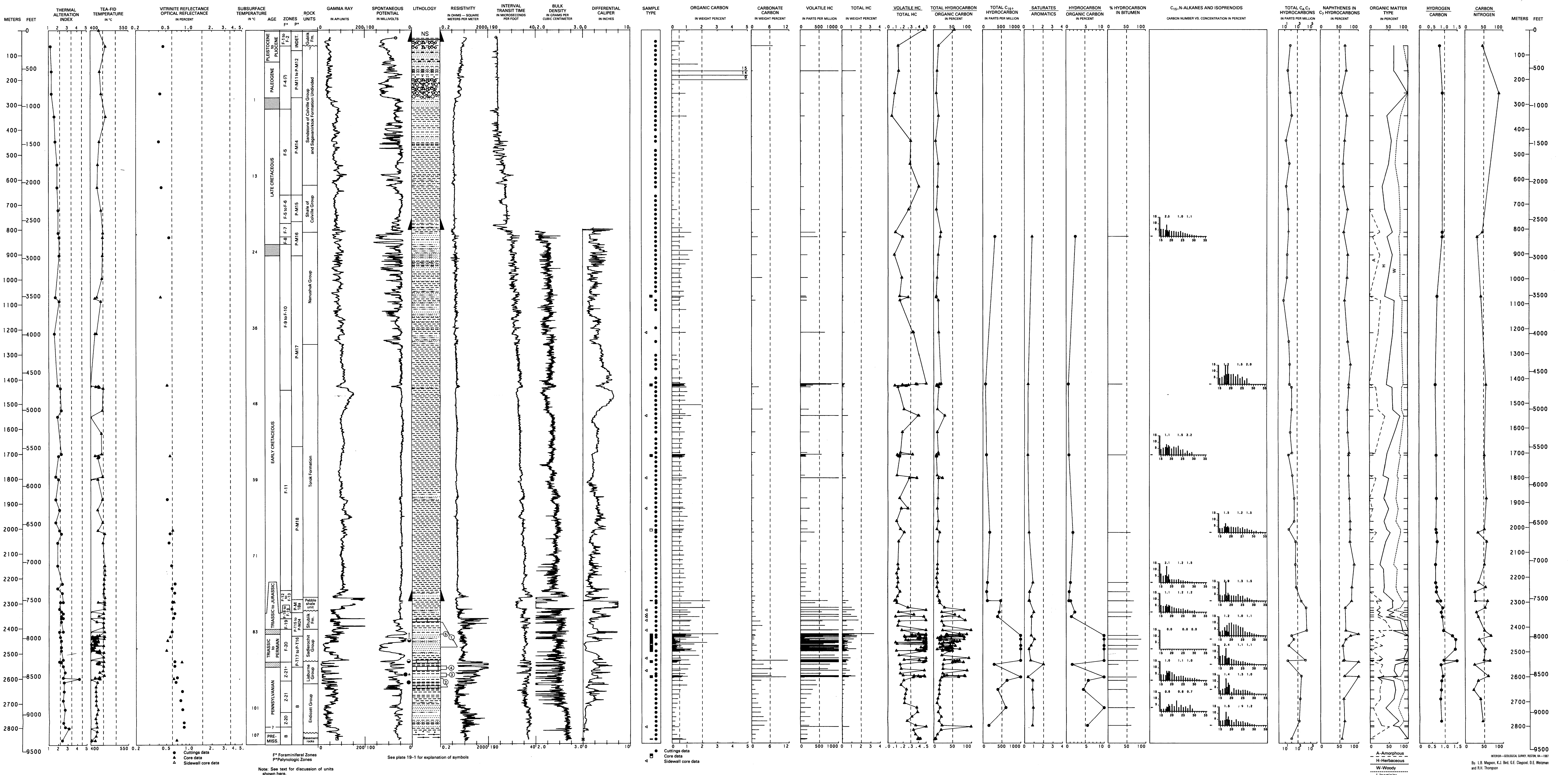
DREW POINT NO. 1

API NO. 50-279-20003
SEC. 26, T. 18 N., R. 8 W., 10M
LAT. 70°52'47" N., LONG. 153°54' W.
ELEV. KB 11.9 M (39 FT)
TD 2,421.3 M (7,946 FT)



J.W. DALTON NO. 1

API NO. 50-279-20006
SEC. 14, T. 18 N., R. 8 W., 10M
LAT. 70°58'13" N., LONG. 153°10'15" W.
ELEV. KB 11.3 M (37 FT)
TD 2,855.1 M (9,367 FT)



GEOLOGY, GEOCHEMISTRY AND HYDROCARBON OCCURRENCE IN DREW POINT NO. 1 AND J.W. DALTON NO. 1 WELLS, NORTH SLOPE, ALASKA