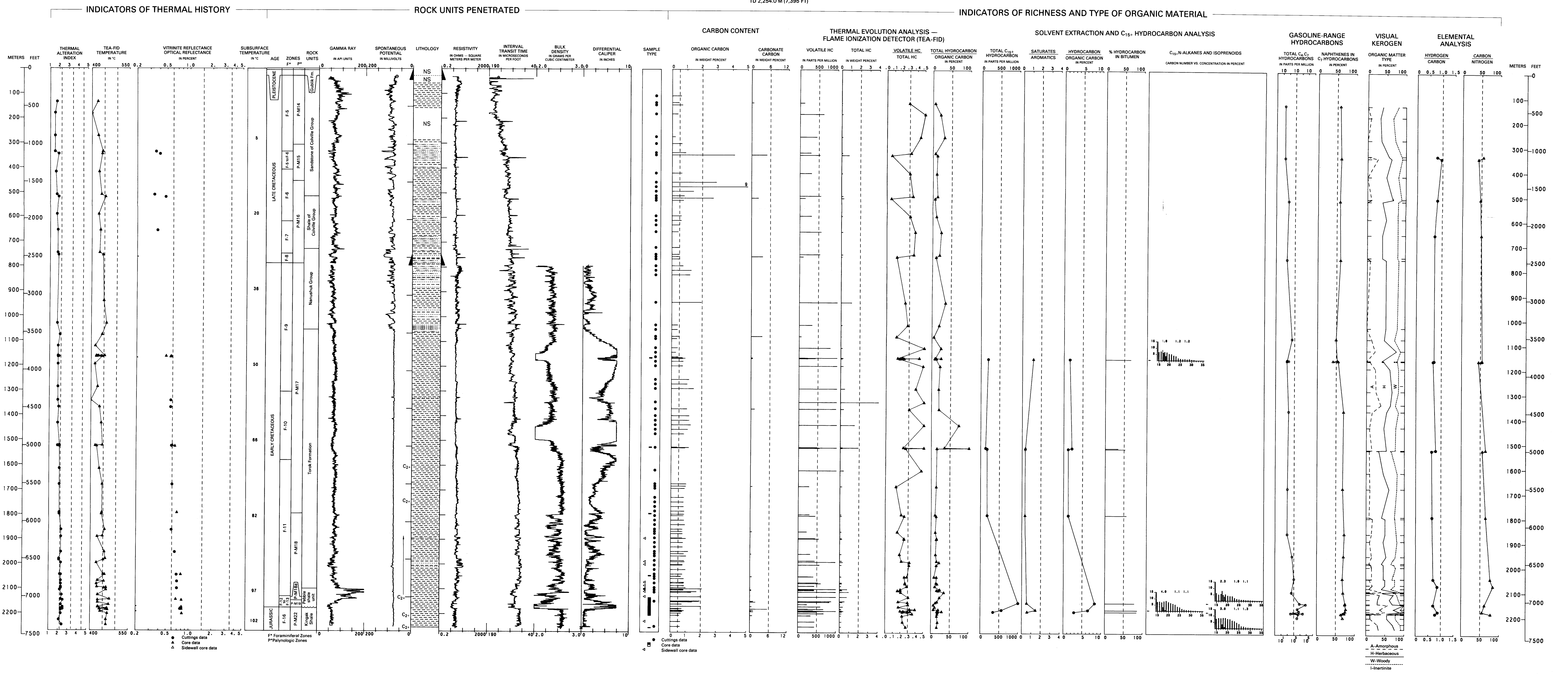


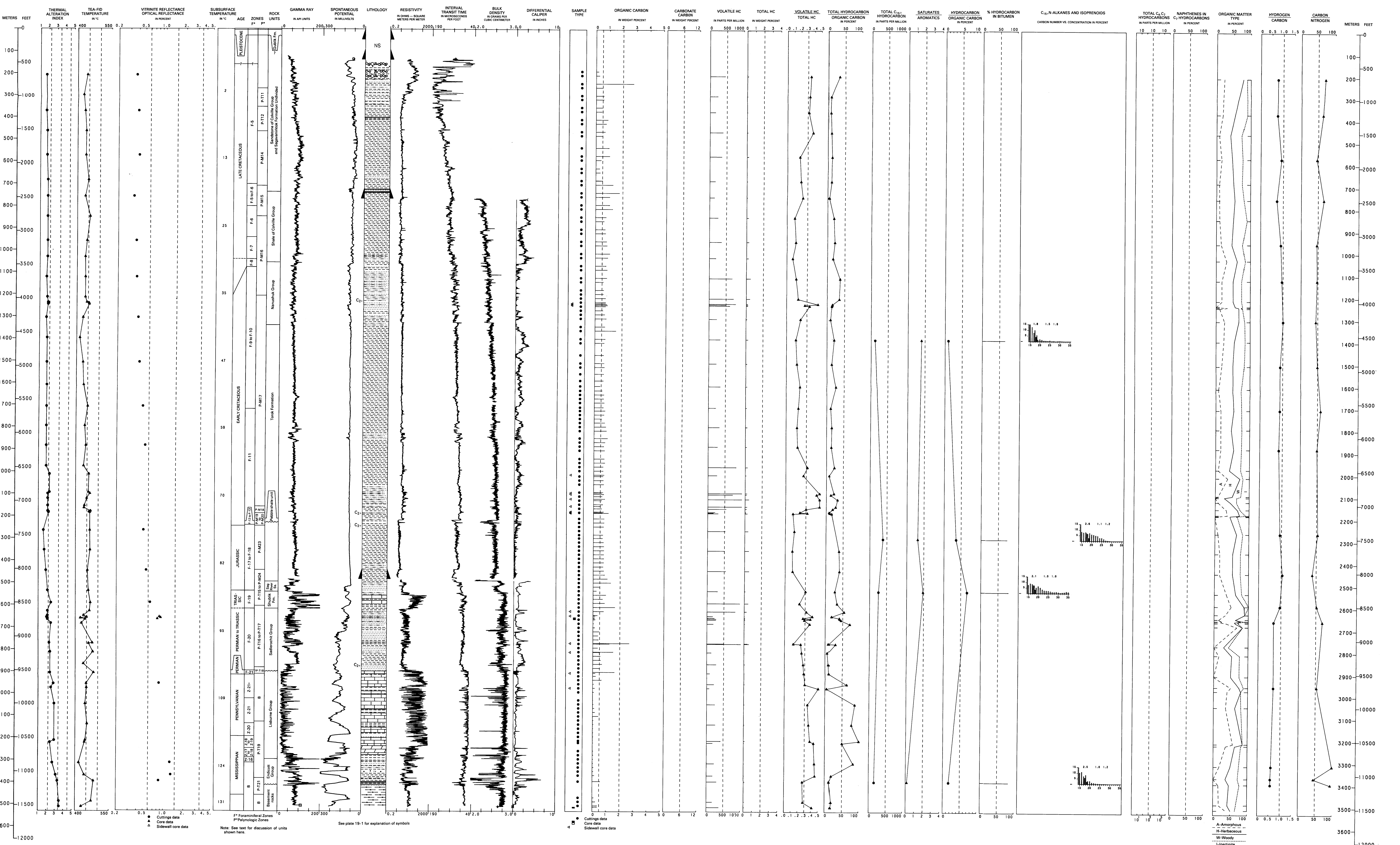
NORTH KALIKPIK NO. 1

API NO. 50-103-20011
SEC. 3, T. 13 N., R. 2 W., 14M
LAT 70°30'33" N., LONG 152°22'04" W.
ELEV. 48.82 M (160 FT)
TO 2,284.0 M (7,508 FT)



ATIGARU POINT NO. 1

API NO. 50-103-20008
SEC. 18, T. 14 N., R. 2 E., 14M
LAT 70°33'22" N., LONG 151°43'02" W.
ELEV. 48.82 M (160 FT)
TO 3,515.9 M (11,538 FT)



GEOLOGY, GEOCHEMISTRY, AND HYDROCARBON OCCURRENCE IN
NORTH KALIKPIK NO. 1 AND ATIGARU POINT NO. 1 WELLS, NORTH SLOPE, ALASKA