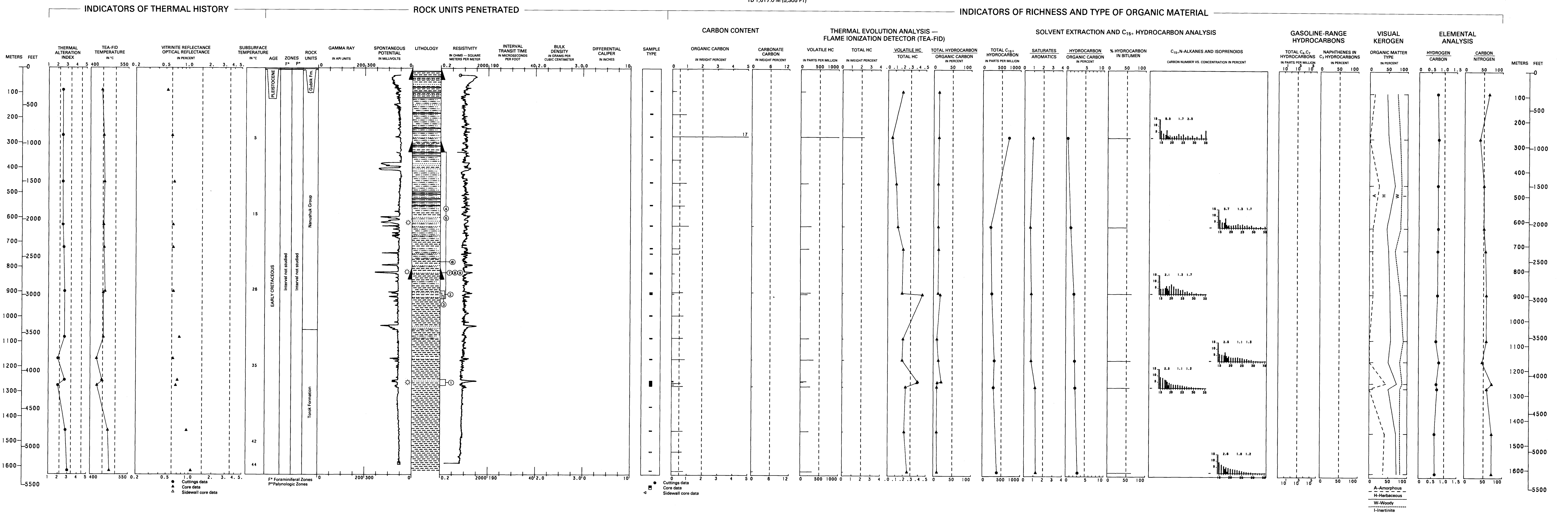


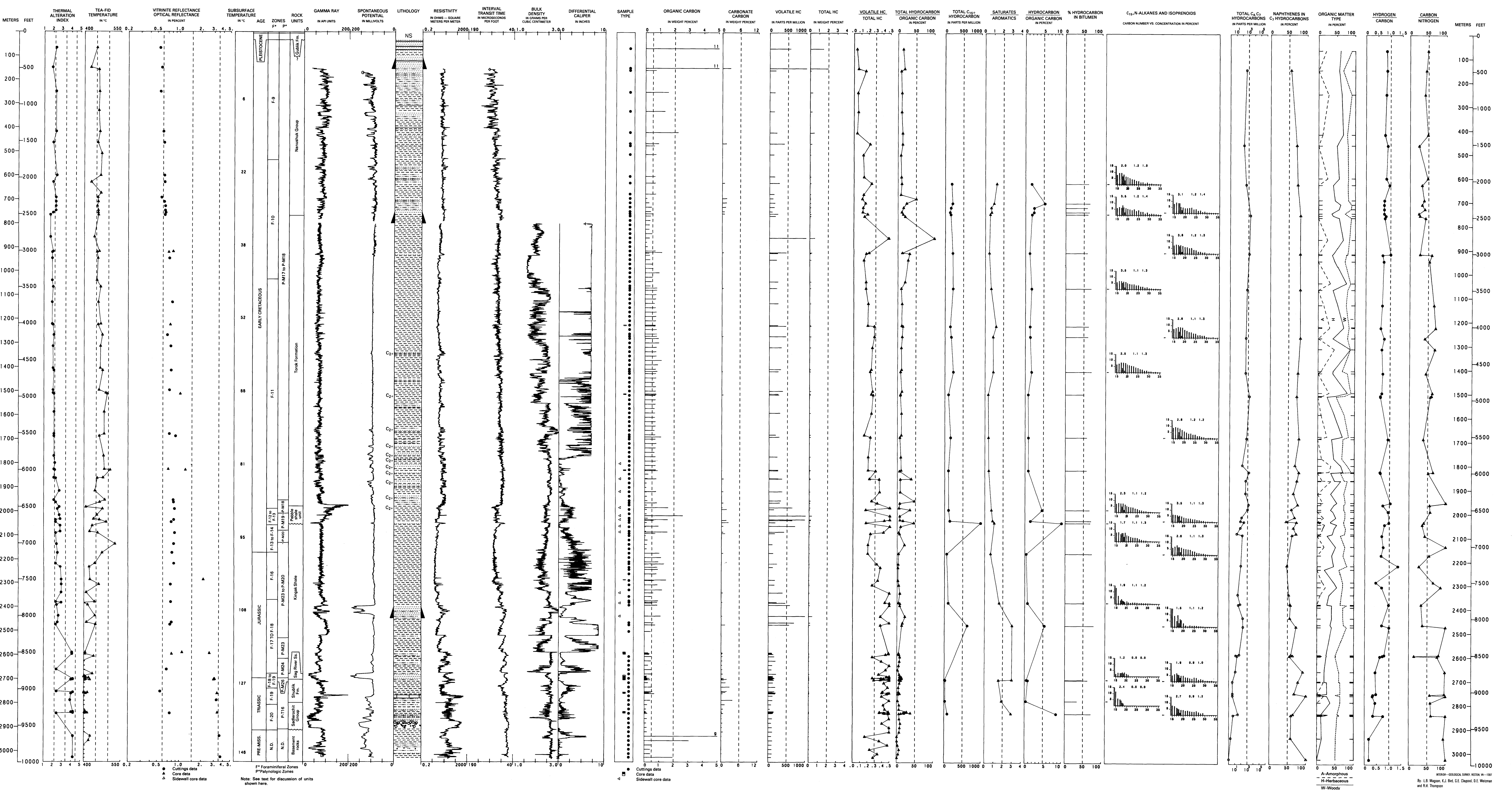
MEADE NO. 1

API NO. 80-163-10002  
SEC. 18, T. 8 N., R. 22 W., 14M  
LAT 70°02'30" N., LONG 157°29'23" W.  
ELEV. 48.643 M (161.17 FT)  
TO 1,617.0 M (5,305 FT)



SOUTH MEADE NO. 1

API NO. 80-163-20001  
SEC. 31, T. 15 N., R. 19 W., 14M  
LAT 70°38'54" N., LONG 156°53'24" W.  
ELEV. 48.183 M (158.07 FT)  
TO 3,031.2 M (9,945 FT)



GEOLOGY, GEOCHEMISTRY, AND HYDROCARBON OCCURRENCE IN  
MEADE NO. 1 AND SOUTH MEADE NO. 1 WELLS, NORTH SLOPE, ALASKA