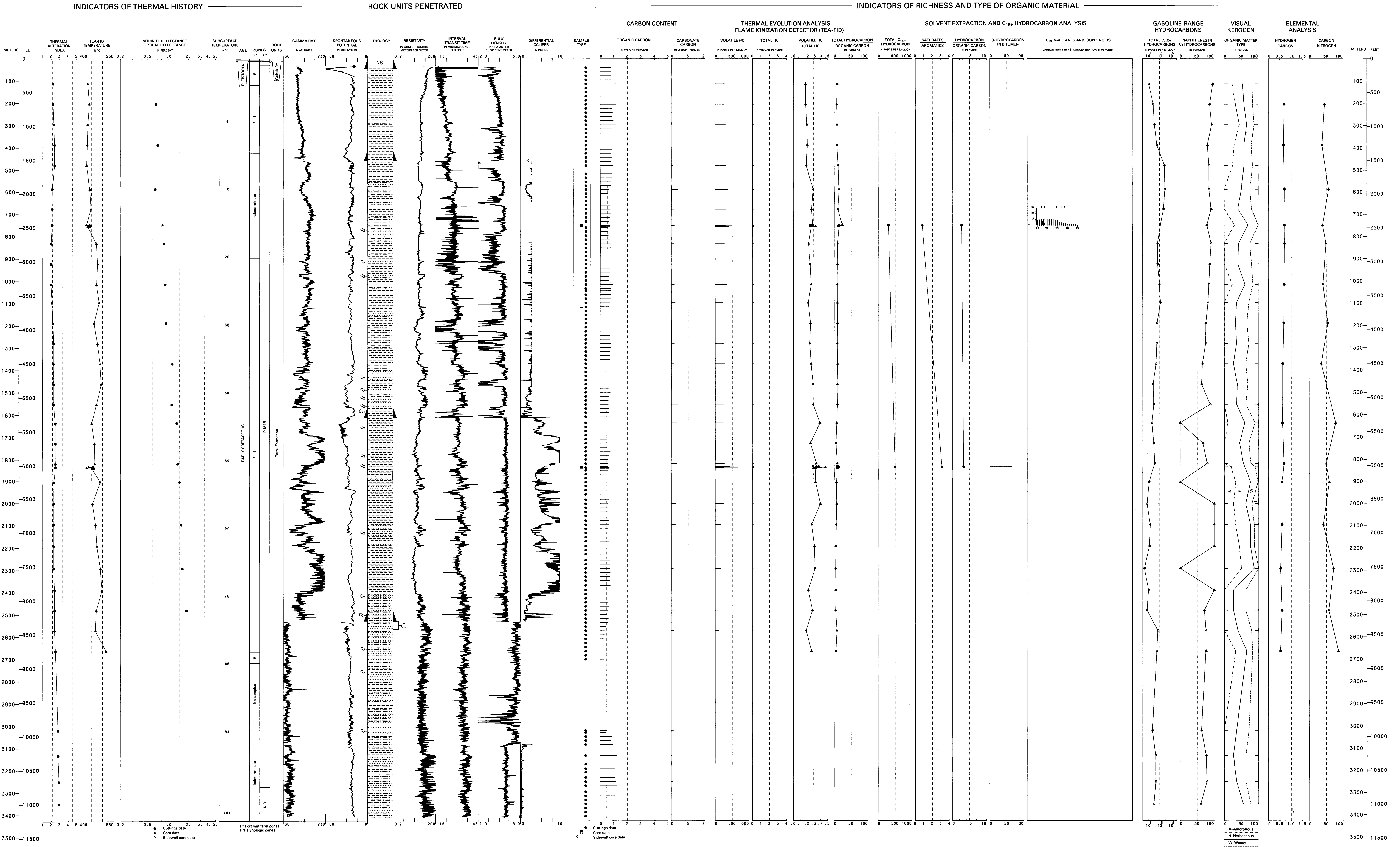


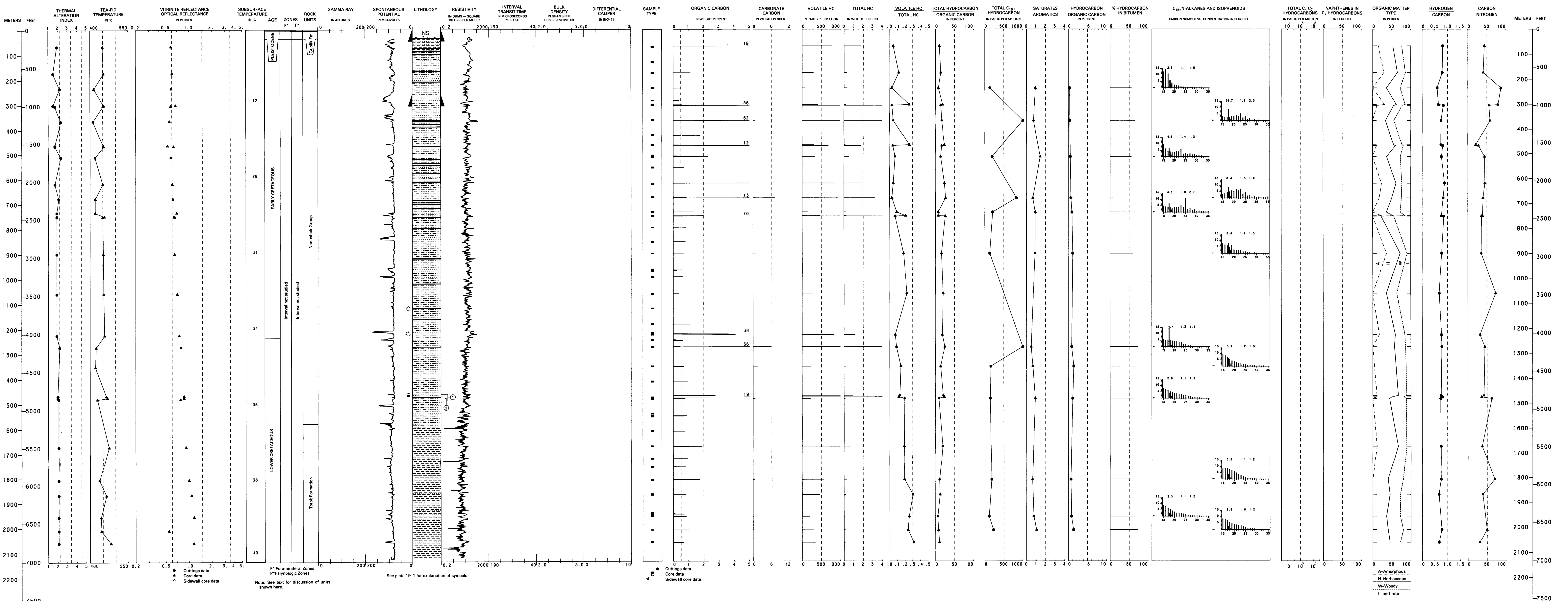
AWUNA NO. 1

API NO. 50-155-20001  
SEC. 30, T. 3 S., R. 23 W., 10M  
LAT 69°09'12" N, LONG 158°01'21" W  
ELEV. 48 346.1 M (1,587 FT)  
TD 3,413.8 M (11,200 FT)



KAOLAK NO. 1

API NO. 50-297-10001  
SEC. 25, T. 2 N., R. 24 W., 10M  
LAT 69°56' N, LONG 162°14'51" W  
ELEV. 89 54.3 M (178 FT)  
TD 2,119.0 M (6,952 FT)



GEOLOGY, GEOCHEMISTRY, AND HYDROCARBON OCCURRENCE IN  
AWUNA NO. 1 AND KAOLAK NO. 1 WELLS, NORTH SLOPE, ALASKA