

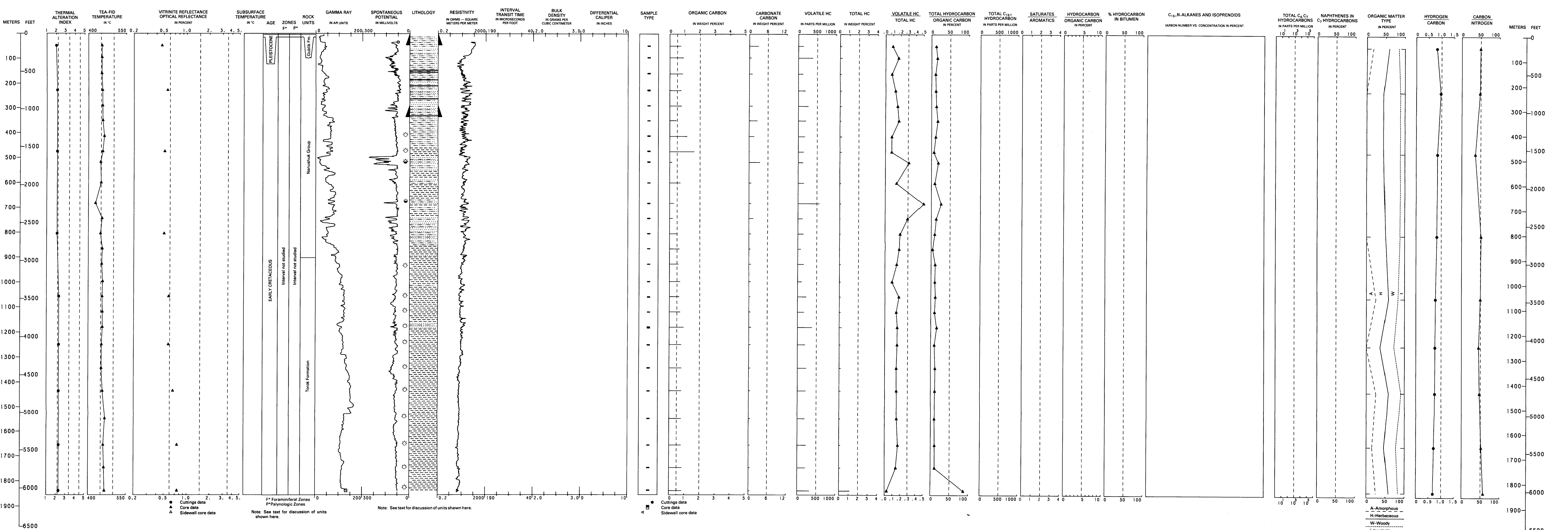
OUMALIK NO. 1

API NO. 50-119-10005
SEC. 30, T. 8 N., R. 16 W., UM
LAT 69°50'18" N., LONG 156°19'24" W.
ELEV. KB 59.3 M (1184 FT)
TD 3,618.6 M (11,872 FT)



EAST OUMALIK NO. 1

API NO. 50-119-10006
SEC. 13, T. 8 N., R. 16 W., UM
LAT 69°47'28" N., LONG 156°32'28" W.
ELEV. KB 89.3 M (293 FT)
TD 1,829.5 M (6,003 FT)



GEOLOGY, GEOCHEMISTRY, AND HYDROCARBON OCCURRENCE IN
OUMALIK NO. 1 AND EAST OUMALIK NO. 1 WELLS, NORTH SLOPE, ALASKA