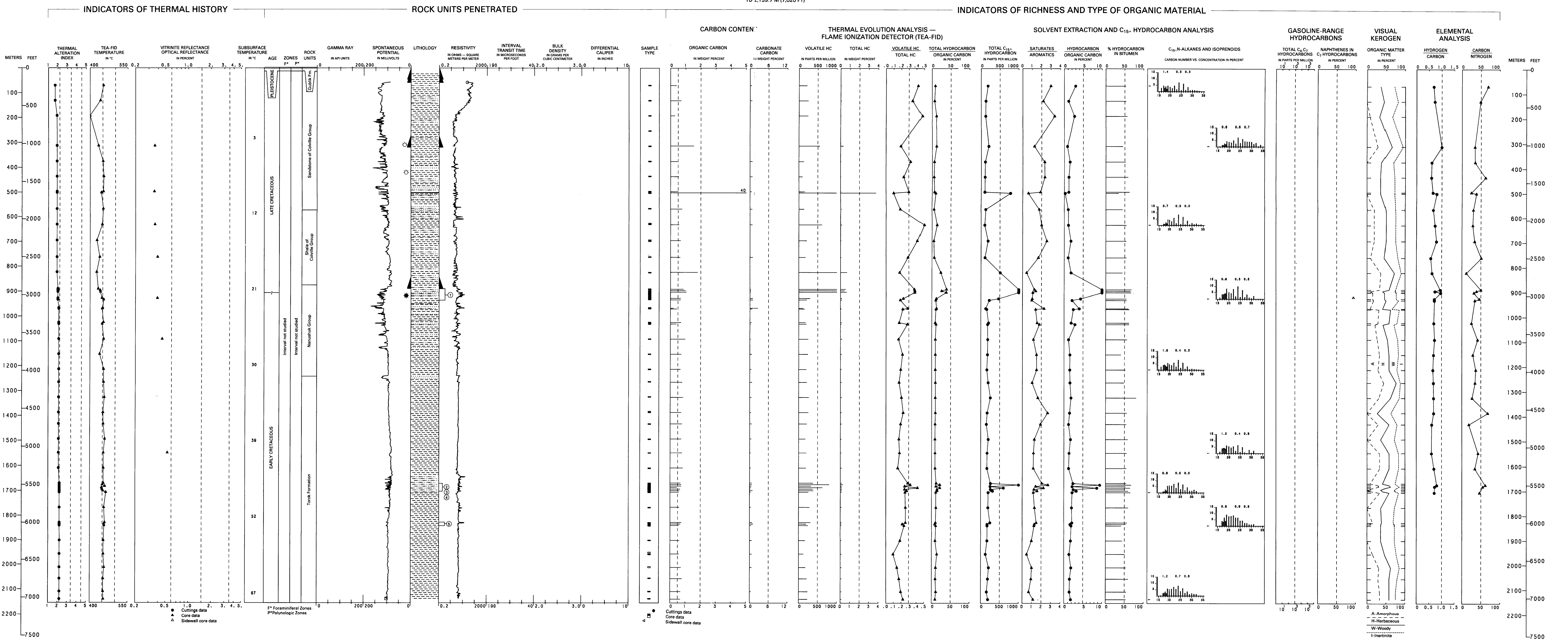


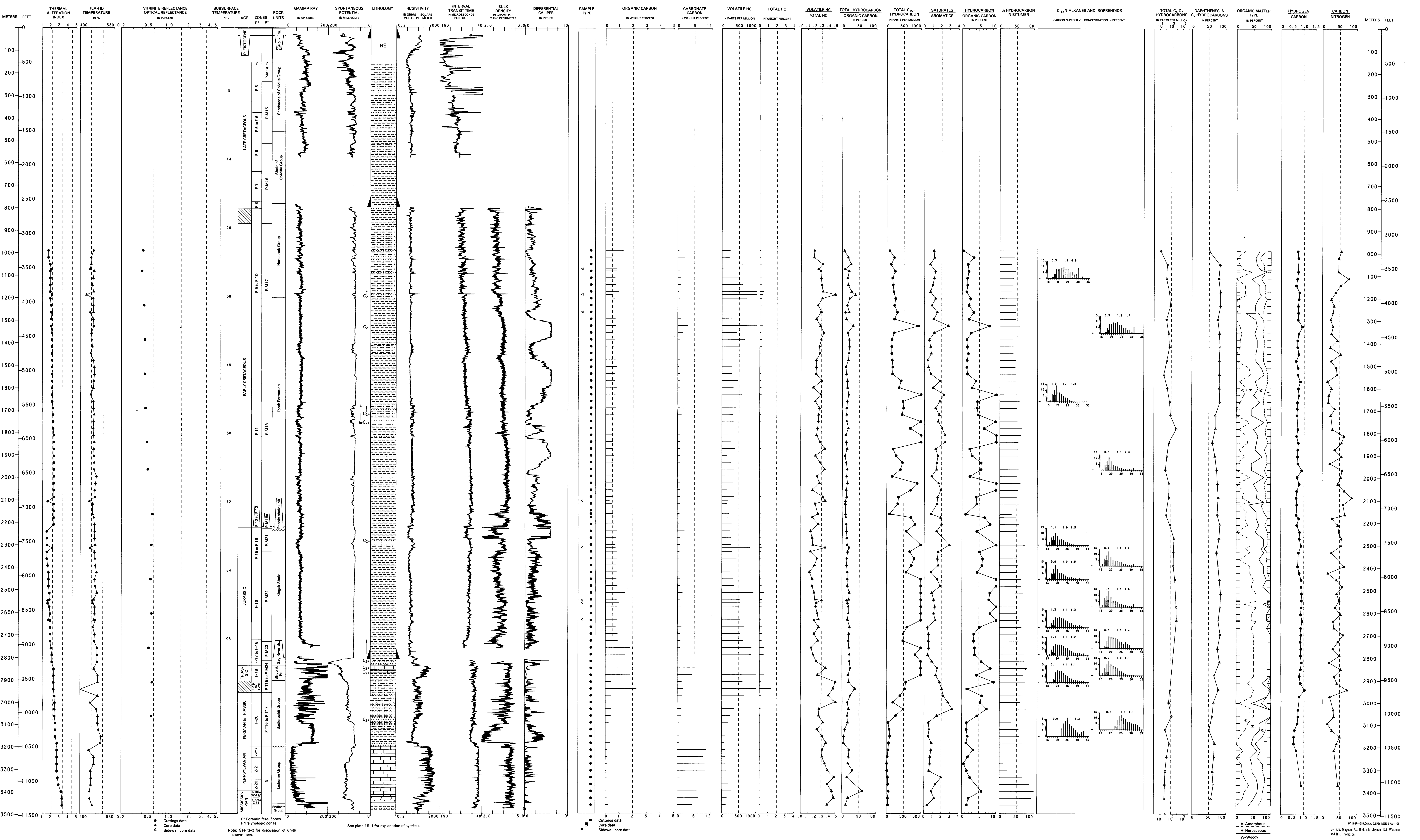
FISH CREEK NO. 1

API NO 50-103-10001  
SEC. 15, T. 11 N., R. 1 E., 10M  
LAT 70°18'43" N., LONG 151°52'20" W.  
ELEV. 68.6 M (227 FT)  
TD 2,139.7 M (7,020 FT)



WEST FISH CREEK NO. 1

API NO 50-103-20009  
SEC. 11, T. 11 N., R. 1 W., 10M  
LAT 70°19'58" N., LONG 152°09'38" W.  
ELEV. 68.34 M (224 FT)  
TD 3,483.0 M (11,427 FT)



GEOLOGY, GEOCHEMISTRY, AND HYDROCARBON OCCURRENCE IN  
FISH CREEK NO. 1 AND WEST FISH CREEK NO. 1 WELLS, NORTH SLOPE, ALASKA