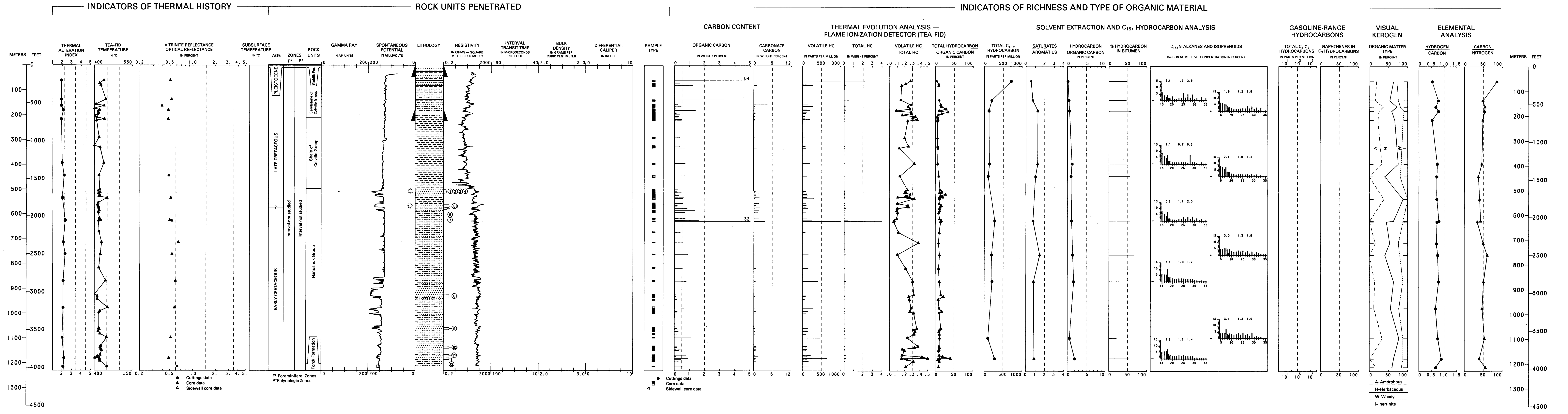


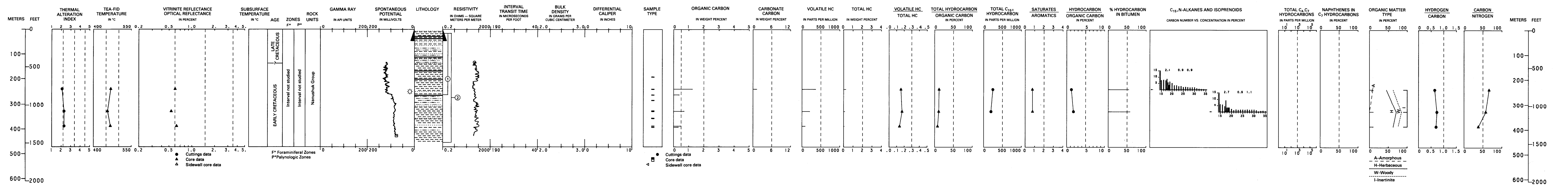
SQUARE LAKE NO. 1

API NO. 50-119-10007  
SEC. 2, T. 2 N., R. 6 W., UM  
LAT. 69°24' N., LONG. 153°18' W.  
ELEV. KB 103.6 M (340 FT)  
TD 1,215.2 M (3987 FT)



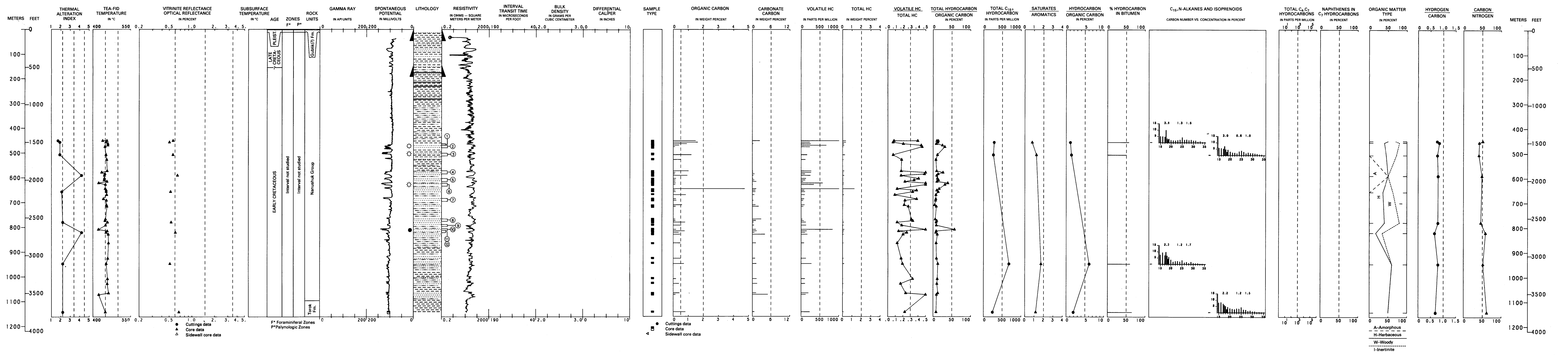
WOLF CREEK NO. 1

API NO. 50-119-10008  
SEC. 2, T. 1 S., R. 7 W., UM  
LAT. 69°23'11" N., LONG. 153°31'15" W.  
ELEV. KB 217.6 M (714 FT)  
TD 457.2 M (1,500 FT)



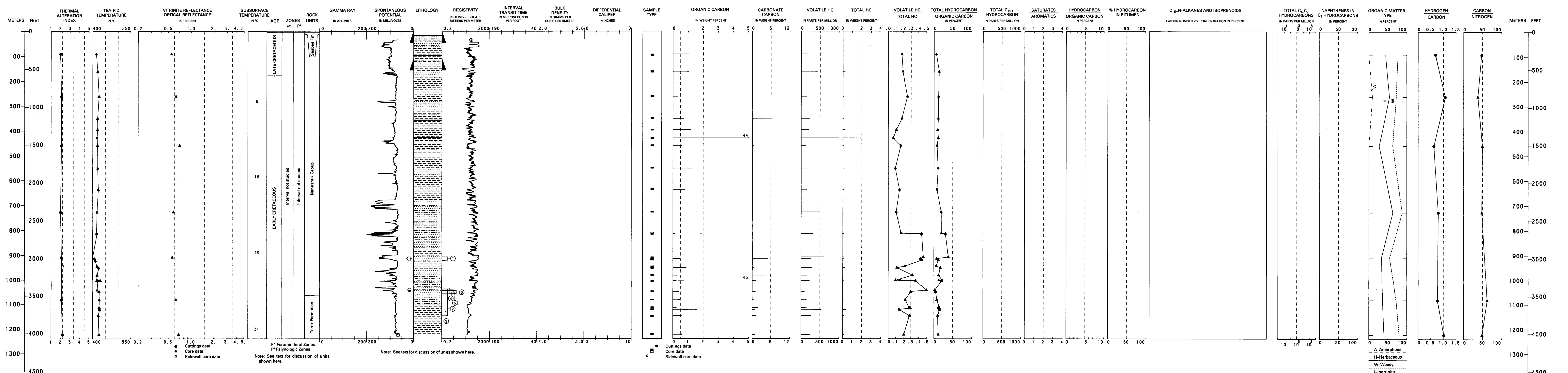
WOLF CREEK NO. 3

API NO. 50-119-10010  
SEC. 2, T. 1 S., R. 7 W., UM  
LAT. 69°23'11" N., LONG. 153°31'25" W.  
ELEV. KB 226.8 M (745 FT)  
TD 1,465.1 M (4,807 FT)



TITALUK NO. 1

API NO. 50-119-10011  
SEC. 23, T. 1 N., R. 11 W., UM  
LAT. 69°23'21" N., LONG. 154°34'04" W.  
ELEV. KB 258.0 M (849 FT)  
TD 1,225.3 M (4,020 FT)



GEOLOGY, GEOCHEMISTRY, AND HYDROCARBON OCCURRENCE IN SQUARE LAKE NO. 1,  
WOLF CREEK NO. 1, WOLF CREEK NO. 3, AND TITALUK NO. 1 WELLS, NORTH SLOPE, ALASKA