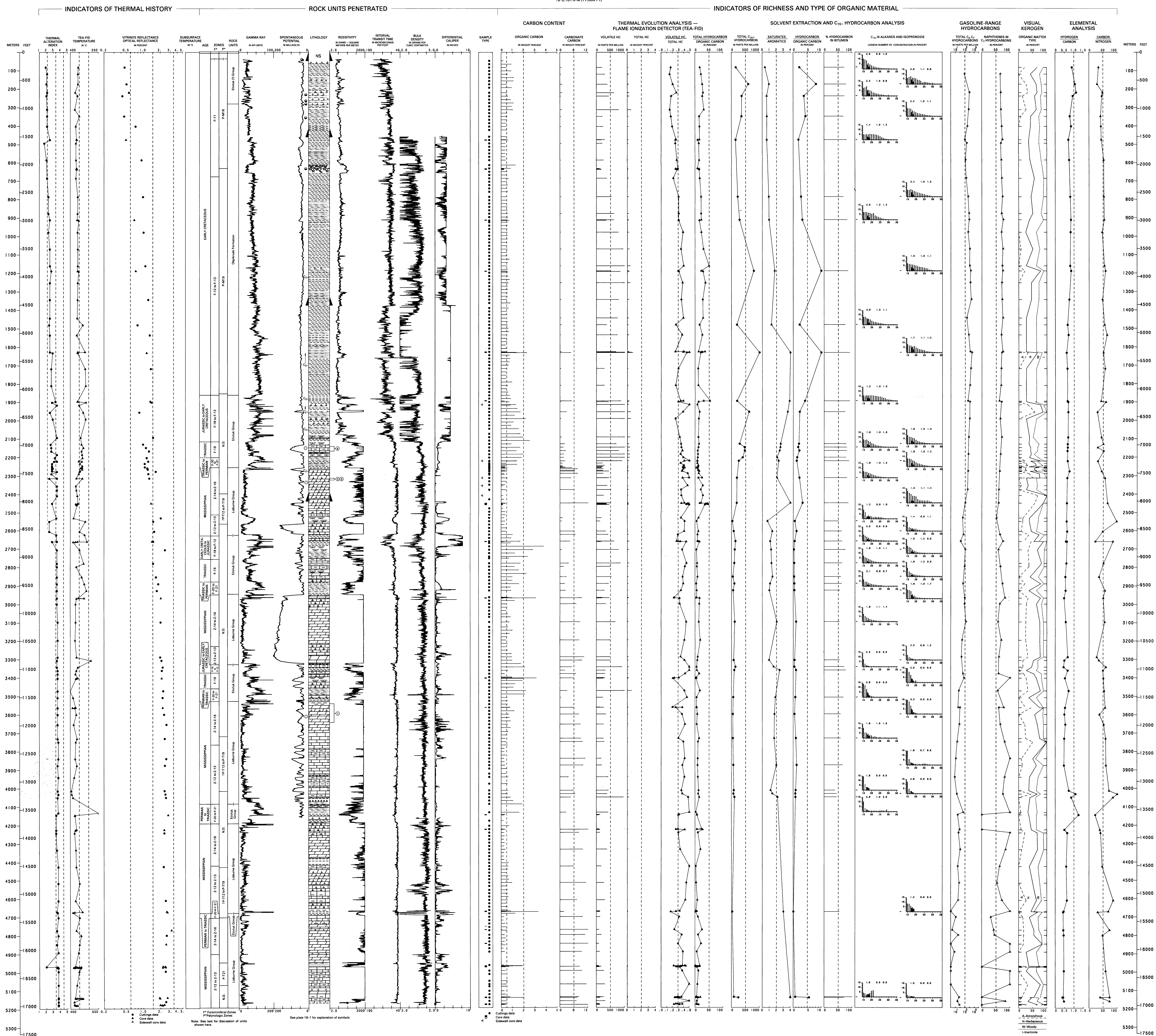


LISBURNE NO. 1

API NO. 50-137-20003
SEC. 17, T. 11 S., R. 16 W., UM
LAT. 68°29'00" N., LONG. 155°41'38" W.
ELEV. KB 567.5 M (1,862 FT)
TD 5,181.6 M (17,000 FT)



GEOLOGY, GEOCHEMISTRY, AND HYDROCARBON
OCCURRENCE IN LISBURNE NO. 1 WELL, NORTH SLOPE, ALASKA

U.S. GEOLOGICAL SURVEY
By: J. B. Morgan, Jr., and G. E. Cooper, Jr.
and R. A. Thompson