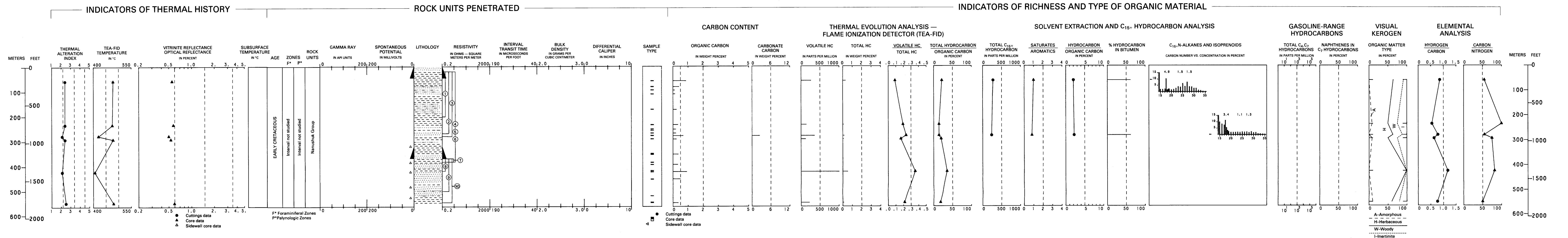


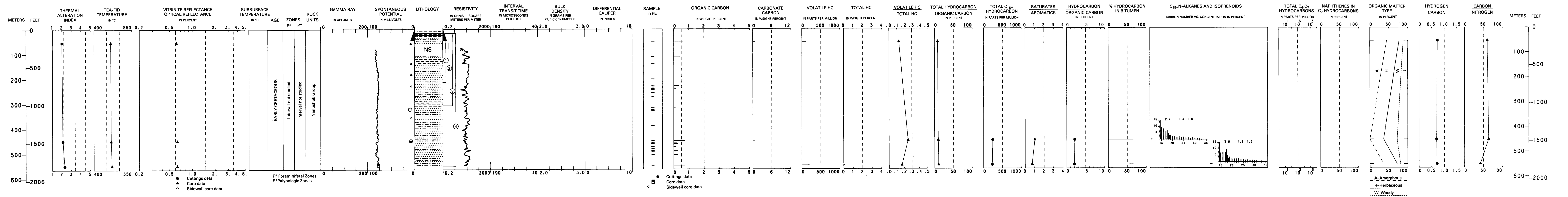
KNIFEBLADE NO. 1

API NO. 50-119-10012
SEC. 36, T. 3 S., R. 12 W., UM
LAT 69°06'04" N., LONG 154°43'21" W.
ELEV. KB 304.5 M (999 FT)
TD 550.2 M (1,805 FT)



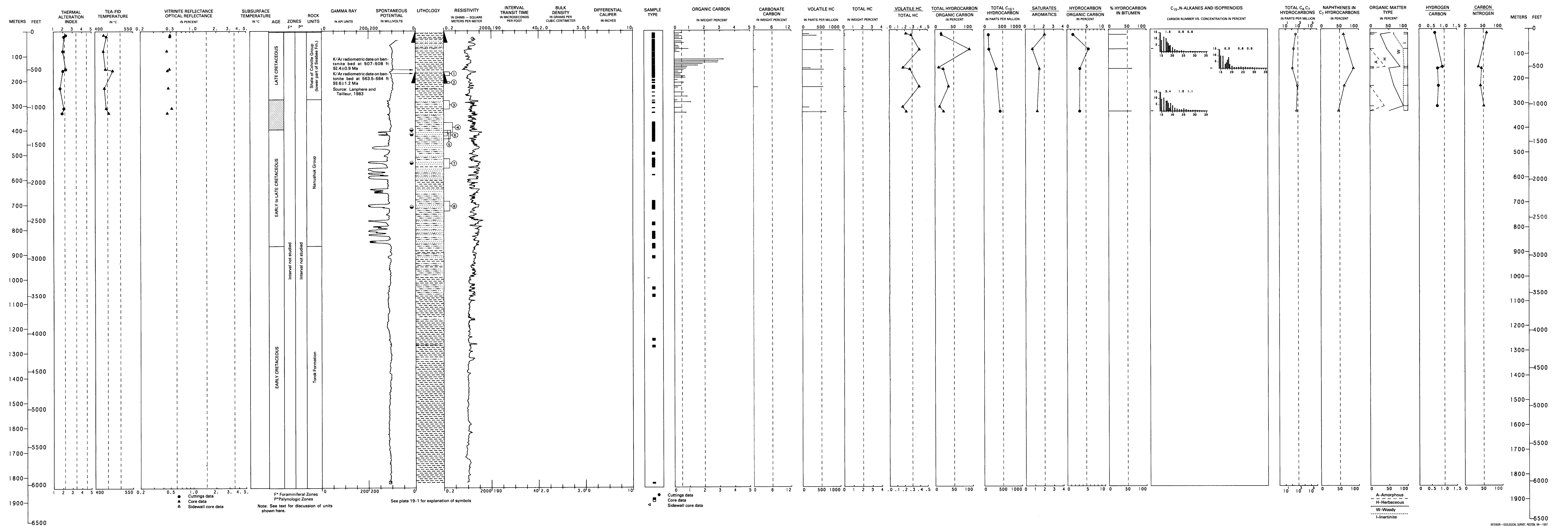
KNIFEBLADE NO. 2A

API NO. 50-119-10014
SEC. 2, T. 4 S., R. 12 W., UM
LAT 69°06'19" N., LONG 154°44'12" W.
ELEV. KB 266.4 M (874 FT)
TD 550.2 M (1,805 FT)



UMIAT NO. 1

API NO. 50-287-10001
SEC. 34, T. 1 N., R. 2 W., UM
LAT 68°23'48" N., LONG 152°19'39" W.
ELEV. KB 348.9 M (1,145 FT)
TD 1,830.3 M (6,005 FT)



GEOLOGY, GEOCHEMISTRY, AND HYDROCARBON OCCURRENCE IN
KNIFEBLADE NO. 1, KNIFEBLADE NO. 2A, AND UMIAT NO. 1 WELLS, NORTH SLOPE, ALASKA