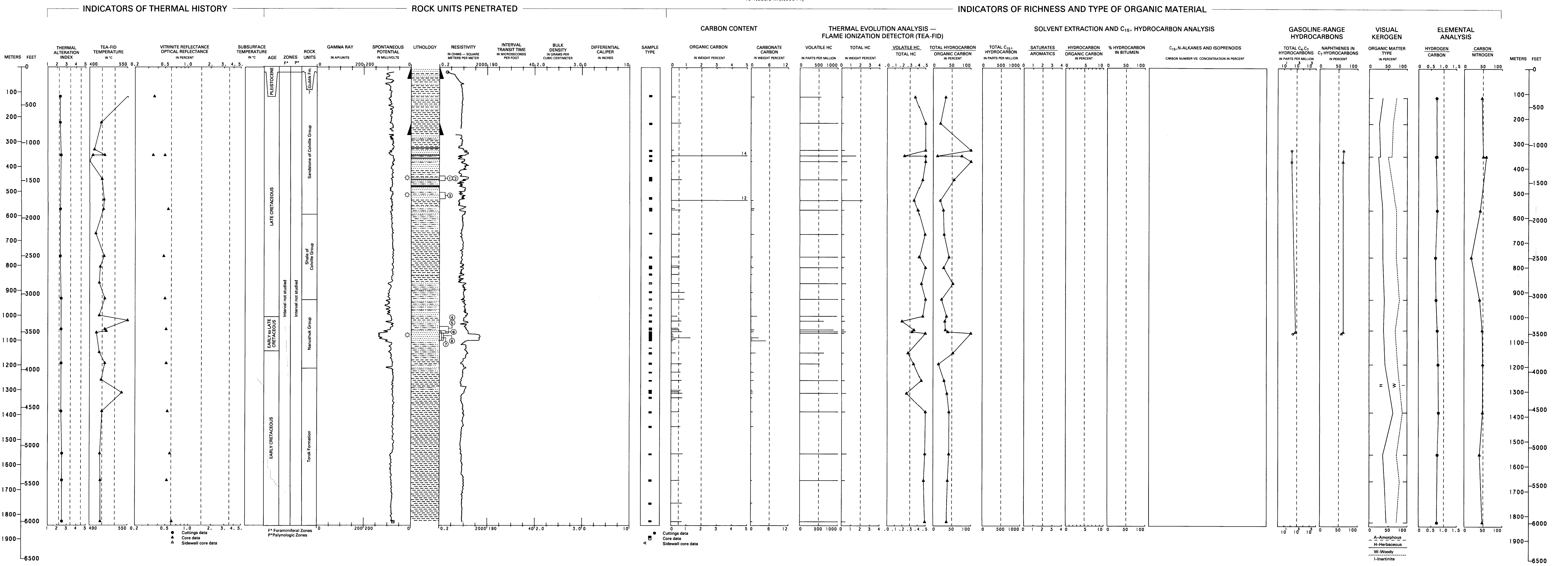


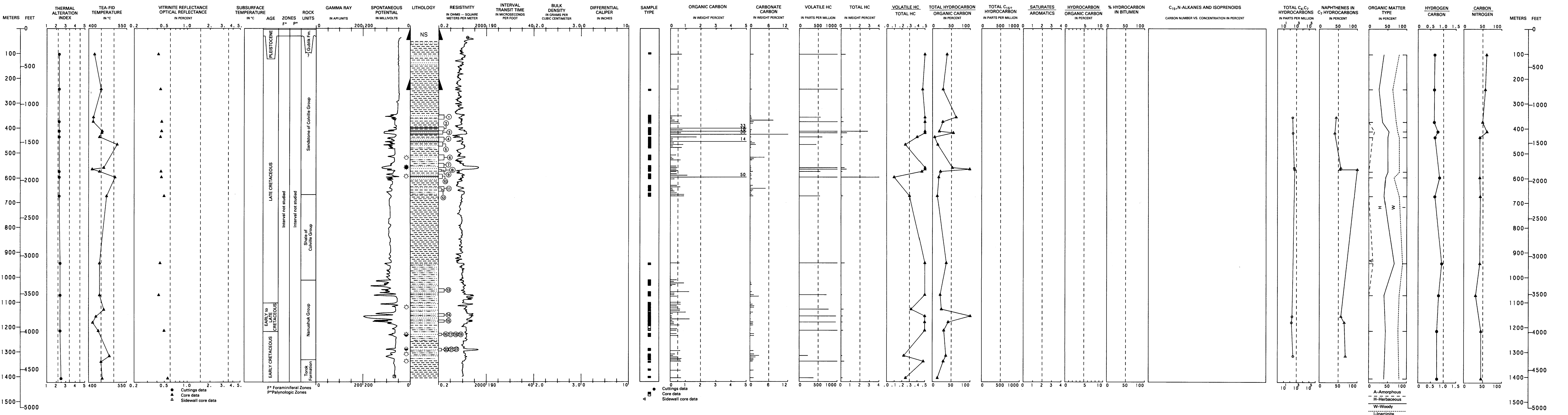
GUBIK NO. 1

API NO. 50-287-10013  
SEC. 18, T. 1 N., R. 3 E., U.M.  
LAT. 69°26'02" N., LONG. 151°28'33" W.  
ELEV. 828.42 S.M. (1163 FT.)  
TD 1,828.8 M. (6,000 FT.)



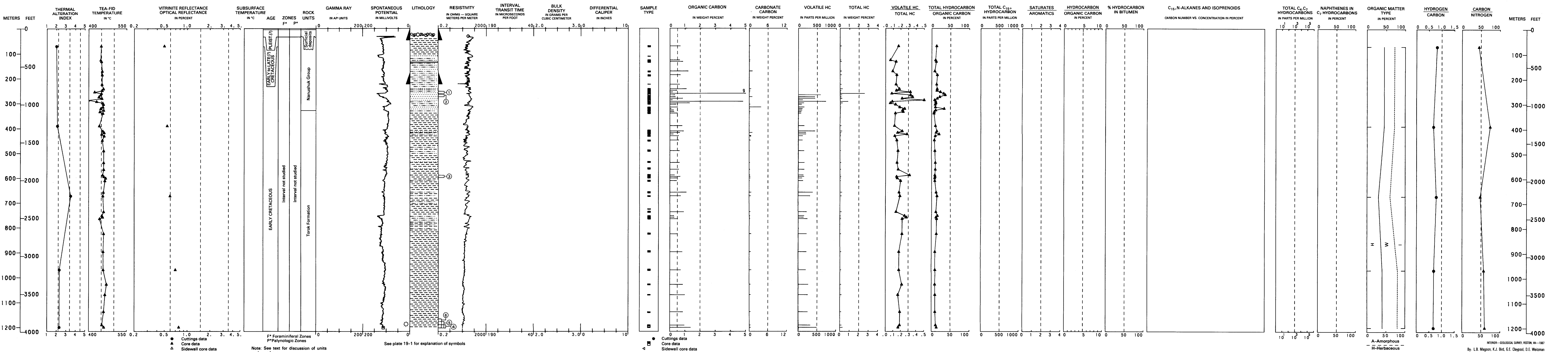
GUBIK NO. 2

API NO. 50-287-10014  
SEC. 20, T. 1 N., R. 3 E., U.M.  
LAT. 69°25'37" N., LONG. 151°30'00" W.  
ELEV. 48.7 M. (163 FT.)  
TD 1,408.2 M. (4,620 FT.)



GRANDSTAND NO. 1

API NO. 50-057-10001  
SEC. 32, T. 5 S., R. 1 E., U.M.  
LAT. 68°37'58" N., LONG. 151°50'02" W.  
ELEV. 201.2 M. (660 FT.)  
TD 1,200.6 M. (3,939 FT.)



GEOLOGY, GEOCHEMISTRY, AND HYDROCARBON OCCURRENCE IN  
GUBIK NO. 1, GUBIK NO. 2, AND GRANDSTAND NO. 1 WELLS, NORTH SLOPE, ALASKA