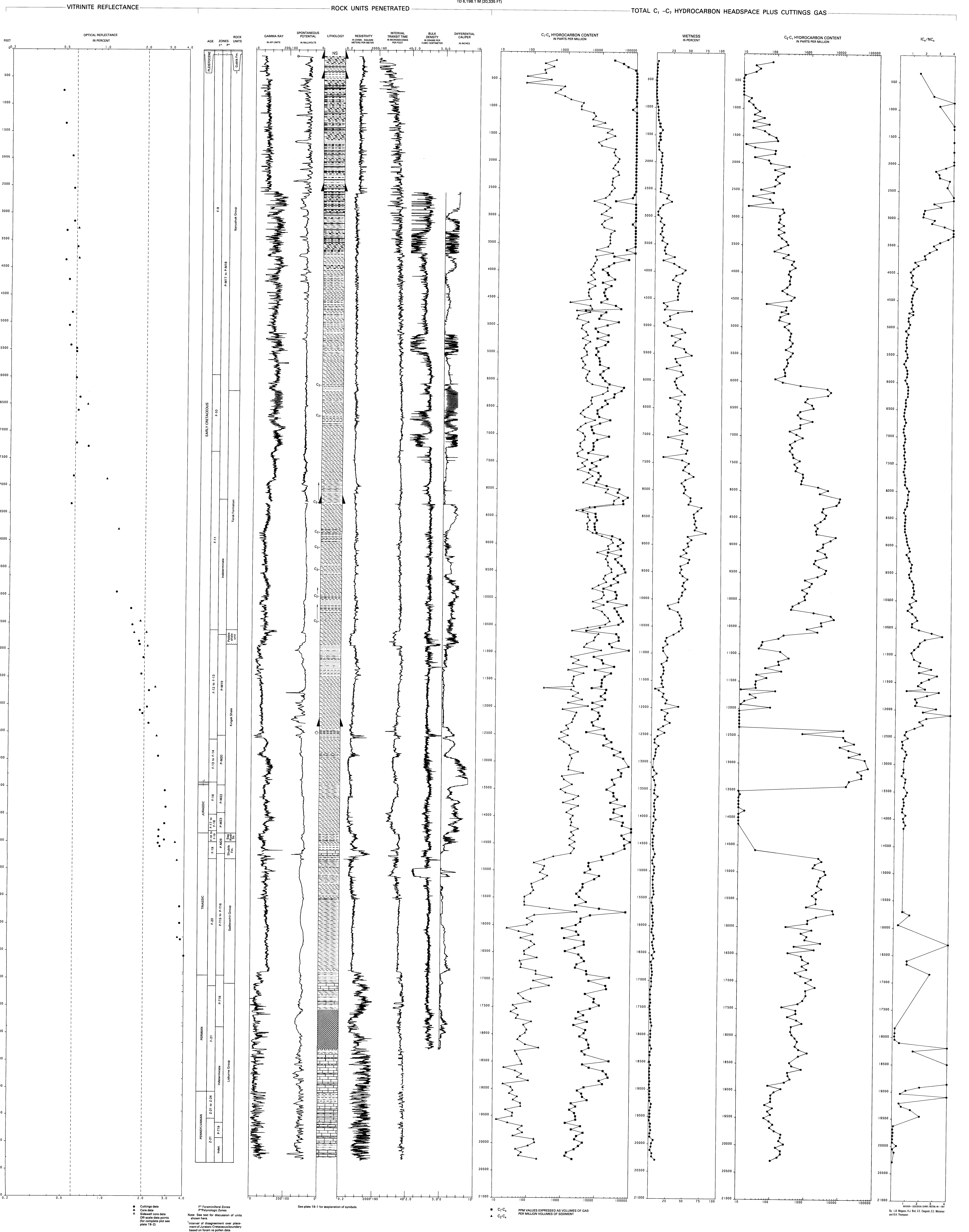


TUNALIK NO. 1

API NO. 60-301-20001  
SEC. 20, T. 10 N., R. 36 W., UM  
LAT. 70°12'23"N., LONG. 161°04'09"W.  
ELEV. KB 33.5 M (110 FT)  
TD 6,198.1 M (20,335 FT)



VITRINITE REFLECTANCE AND HYDROCARBON DATA FOR TUNALIK NO. 1 WELL, NORTH SLOPE, ALASKA