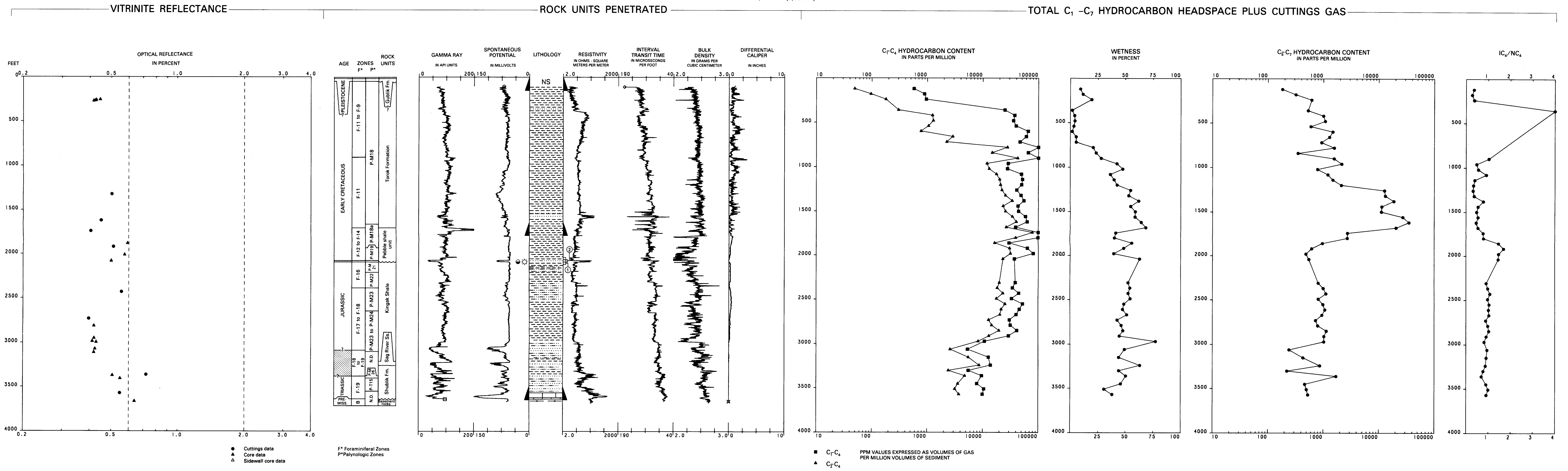


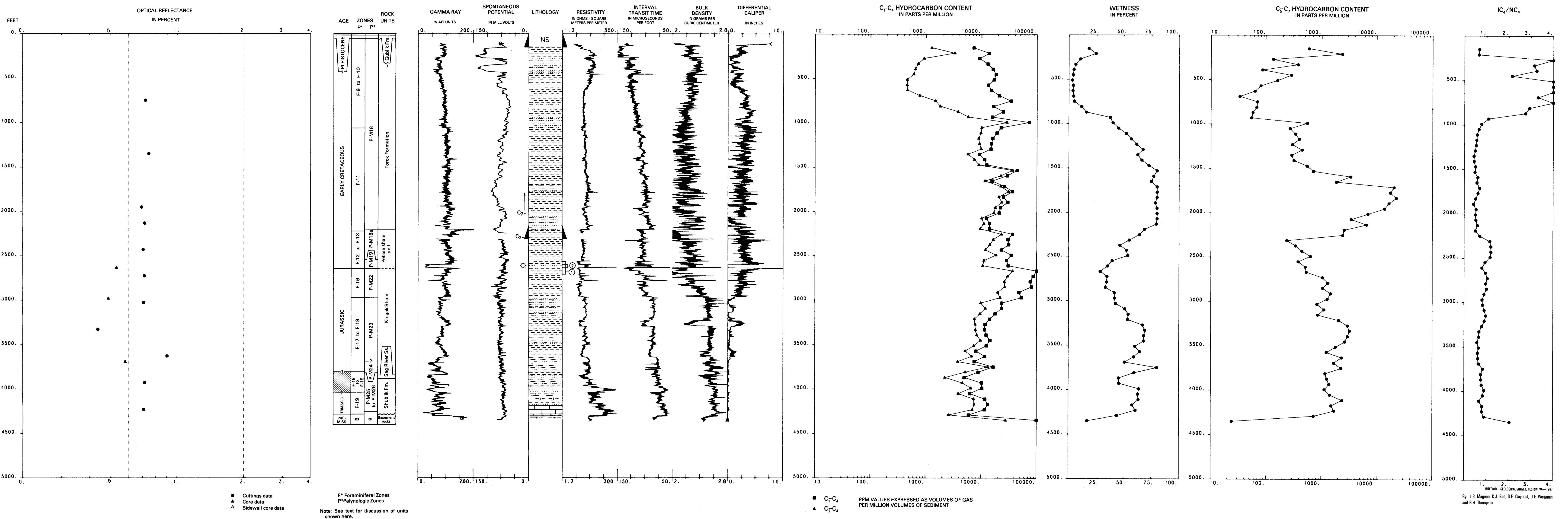
WALAKPA NO. 1

API NO. 50-023-20013
SEC. 9, T. 20 N., R. 19 W., UM
LAT 71°05'58" N., LONG 156°53'04" W.
ELEV. KB 15.2 M (50 FT)
TD 1,117.4 M (3,666 FT)



WALAKPA NO. 2

API NO. 50-023-20019
SEC. 31, T. 20 N., R. 19 W., UM
LAT 71°03' N., LONG 156°57'10" W.
ELEV. KB 18.6 M (61 FT)
TD 1,328.9 M (4,360 FT)



VITRINITE REFLECTANCE AND HYDROCARBON DATA FOR
WALAKPA NO. 1 AND WALAKPA NO. 2 WELLS, NORTH SLOPE, ALASKA