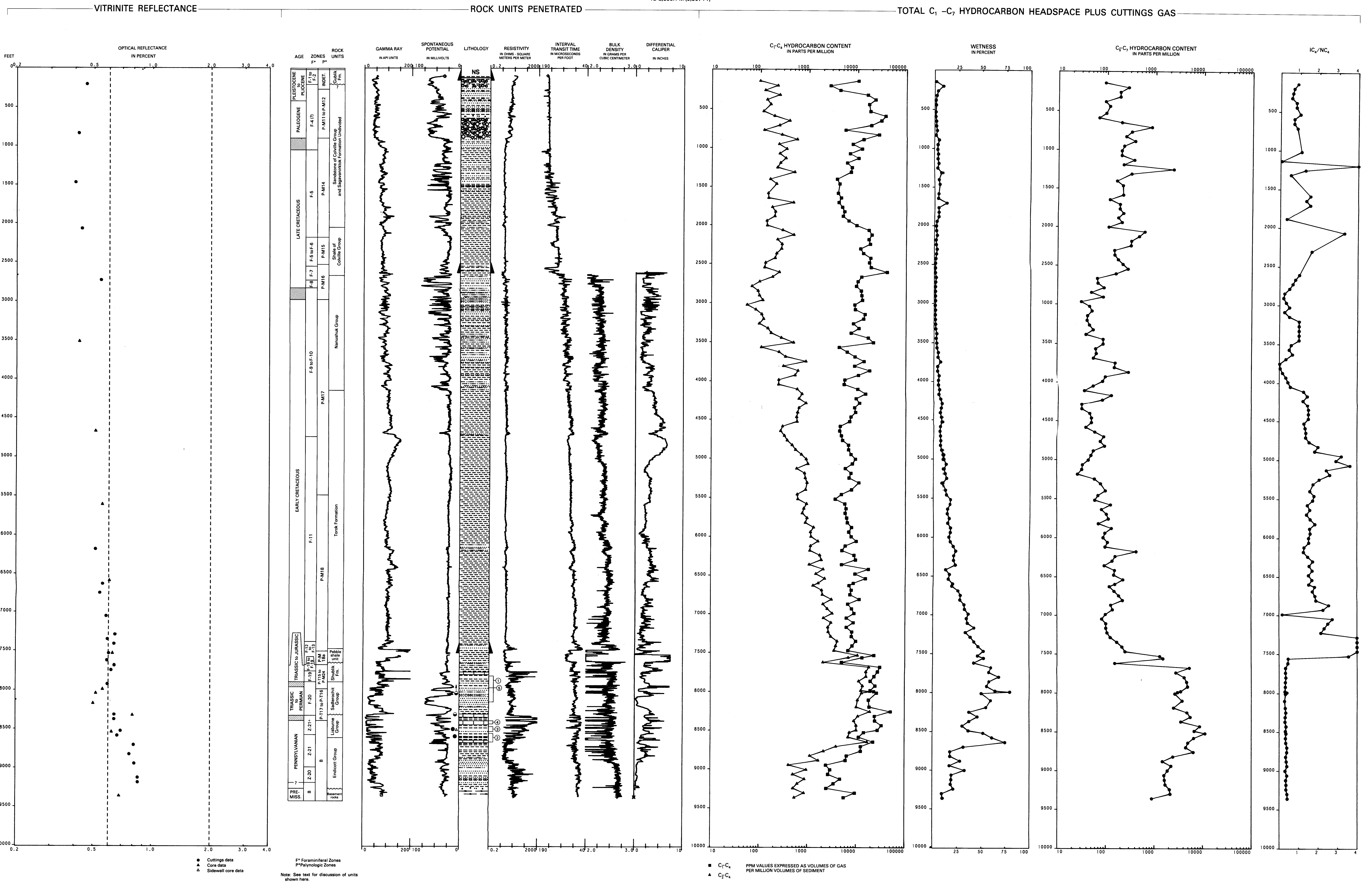


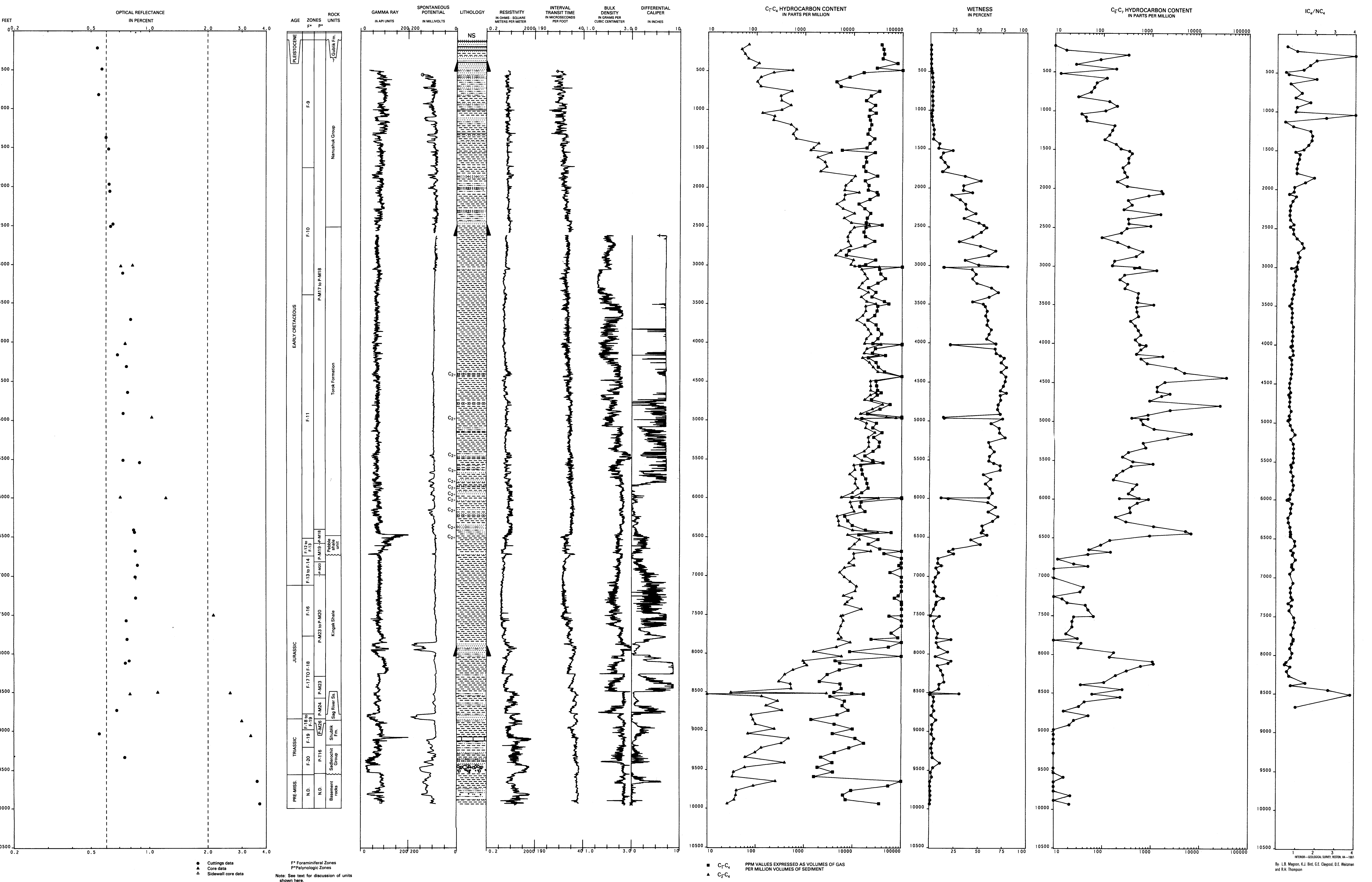
J.W. DALTON NO. 1

API NO. 50-279-20006  
SEC. 14, T. 18 N., R. 5 W. 10 M  
LAT 70°55'14" N., LONG 153°08'19" W.  
ELEV. KB 11.3 M (37 FT)  
TD 2,855.1 M (9,367 FT)



SOUTH MEADE NO. 1

API NO. 50-183-20001  
SEC. 31, T. 15 N., R. 19 W. 10 M  
LAT 70°30'54" N., LONG 150°52'24" W.  
ELEV. KB 18.3 M (60 FT)  
TD 2,468.2 M (8,095 FT)



VITRINITE REFLECTANCE AND HYDROCARBON DATA FOR  
J.W. DALTON NO. 1 AND SOUTH MEADE NO. 1 WELLS, NORTH SLOPE, ALASKA