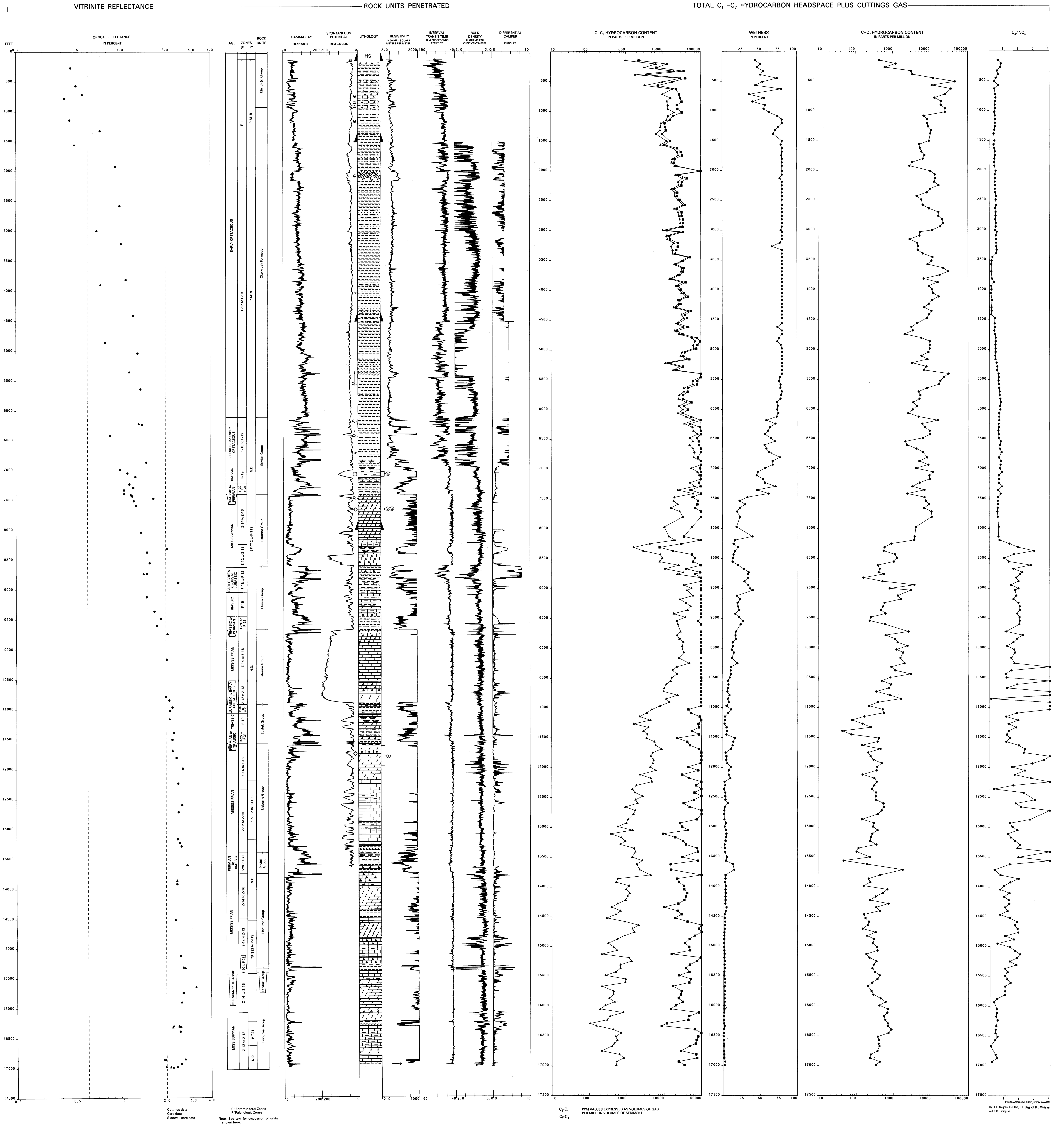


LISBURNE NO. 1

API NO. 50-137-20003
SEC. 17, T. 11 S., R. 16 W., UM
LAT 88°29'00" N., LONG 158°11'38" W.
ELEV. KB 567.5 M (1,862 FT)
TD 5,181.6 M (17,000 FT)



VITRINITE REFLECTANCE AND HYDROCARBON DATA FOR LISBURNE NO. 1 WELL, NORTH SLOPE, ALASKA