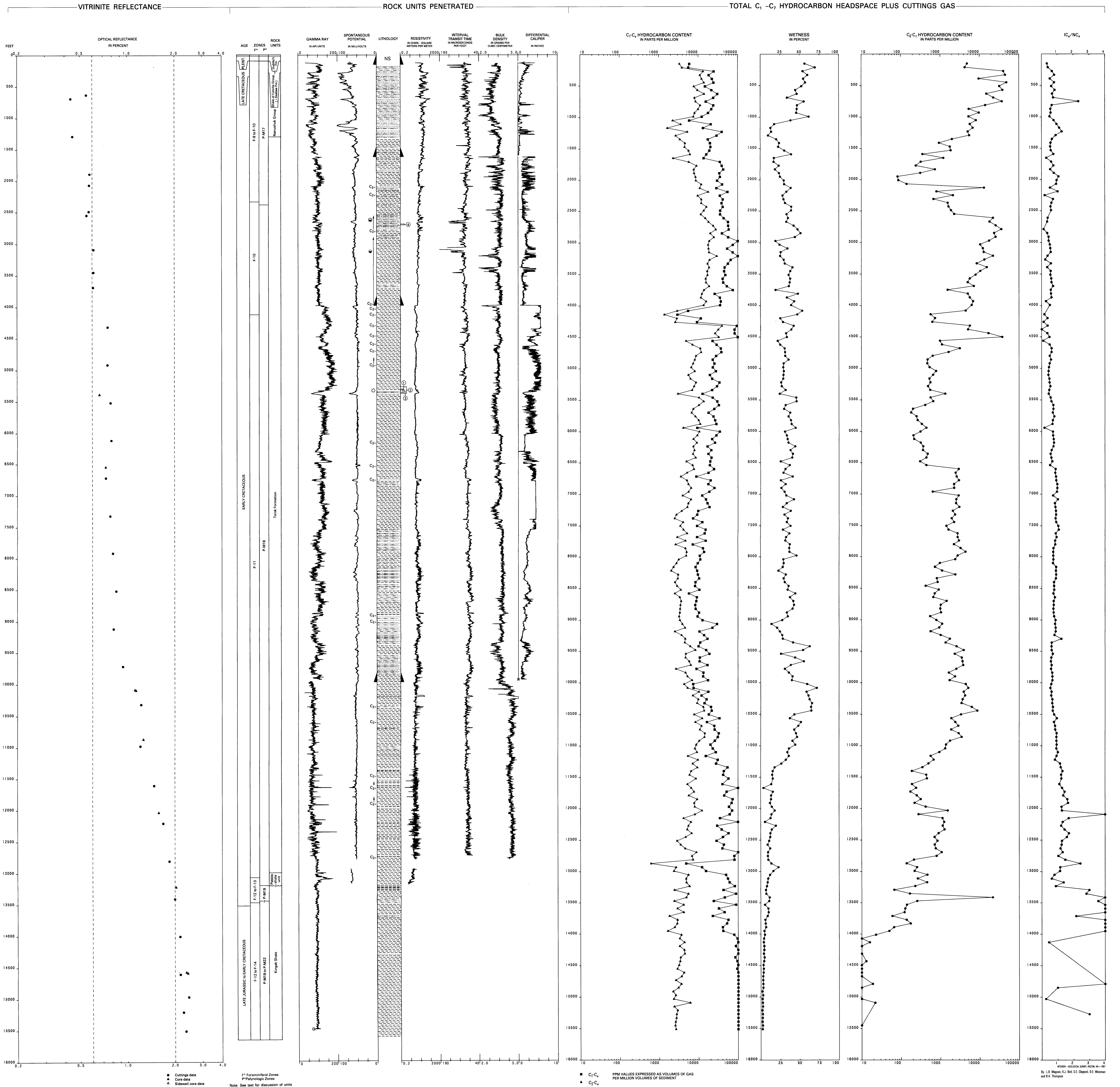


SEABEE NO. 1

API NO. 80-287-20007  
SEC. 5, T. 1 S., R. 1 W., UM  
LAT 69°22'49" N., LONG 152°10'31" W.  
ELEV. KB 98.1 M (322 FT)  
TD 4,768.2 M (15,611 FT)



VITRINITE REFLECTANCE AND HYDROCARBON  
DATA FOR SEABEE NO. 1 WELL, NORTH SLOPE, ALASKA