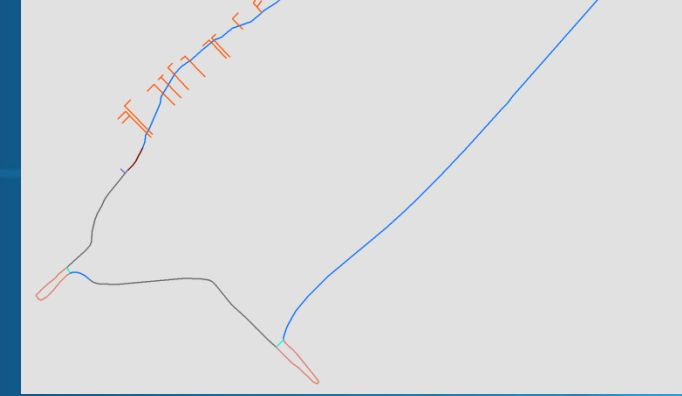
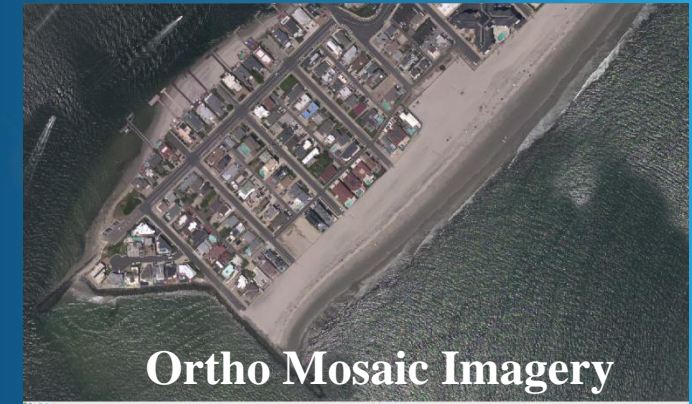


# NOAA's Coastal Mapping Program

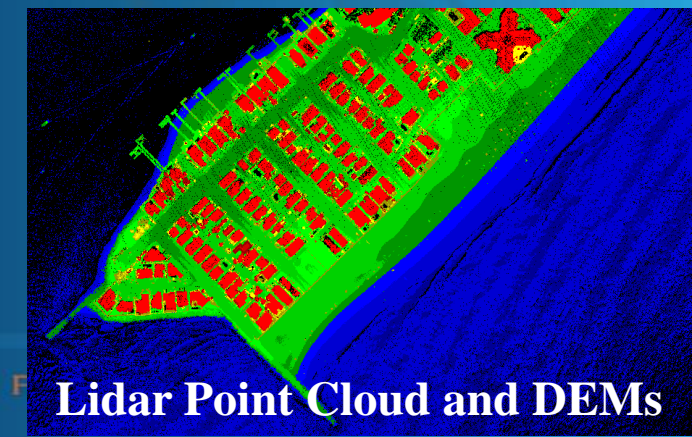
- Define the National Shoreline and nearshore elevation data
- NOAA nautical charts
- Other important applications:
  - Used in defining the United States' territorial limits
  - Coastal resource management
  - Storm surge and coastal flooding modeling
  - GIS analysis
  - Benthic habitat mapping
- Coastal Intelligence and Resiliency...
  - Map once use many times!
- Emergency Response Imagery



Shoreline  
<https://www.ngs.noaa.gov/NSDE/>



Ortho Mosaic Imagery  
<https://coast.noaa.gov/digitalcoast/>



Lidar Point Cloud and DEMs



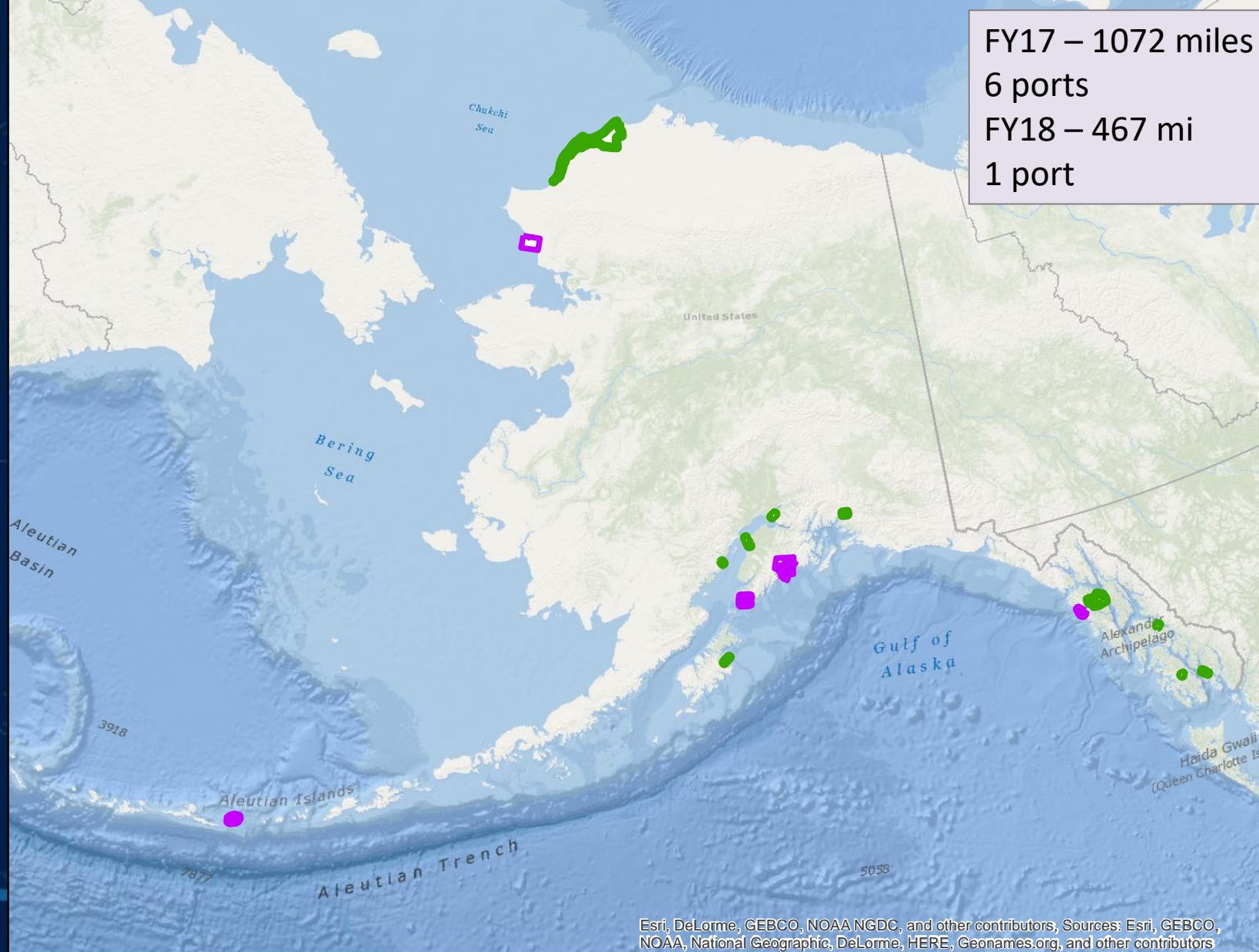
# NOAA Shoreline Update

National Shoreline (CMP for Chart Update)

FY17 – 1072 miles  
6 ports  
FY18 – 467 mi  
1 port

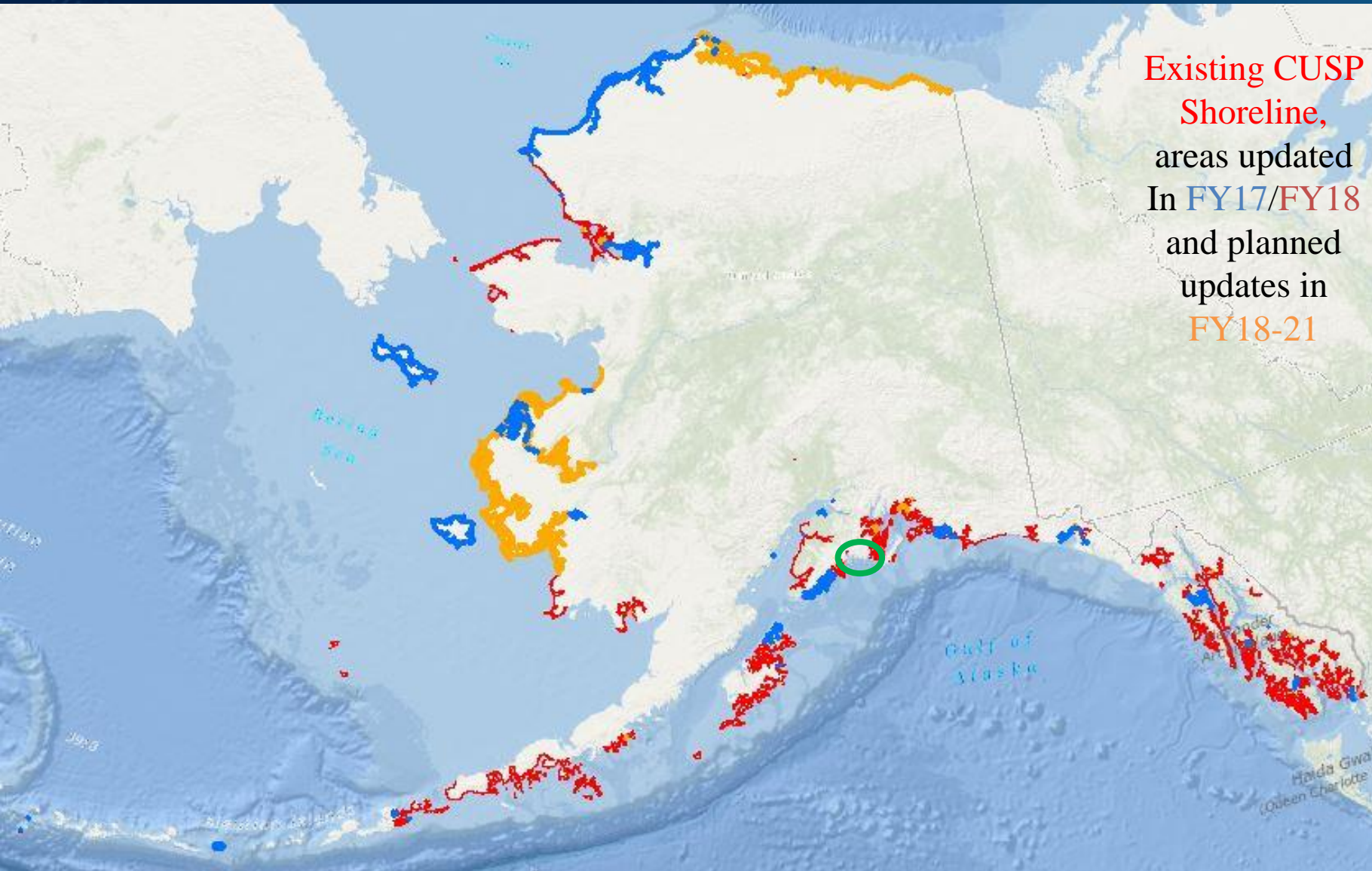
National Shoreline updates focus on navigational-significant areas (harbors, ports, approaches, etc.) primarily for nautical charting applications – each year NOAA/NGS maps 3-5 % of U.S. National Shoreline (equivalent to <500 mi/year in Alaska).

Primary sources to derive shoreline and features are stereo imagery from aircraft and satellite.



Esri, DeLorme, GEBCO, NOAA NGDC, and other contributors, Sources: Esri, GEBCO, NOAA, National Geographic, DeLorme, HERE, Geonames.org, and other contributors

# Continually Updated Shoreline Product (CUSP)

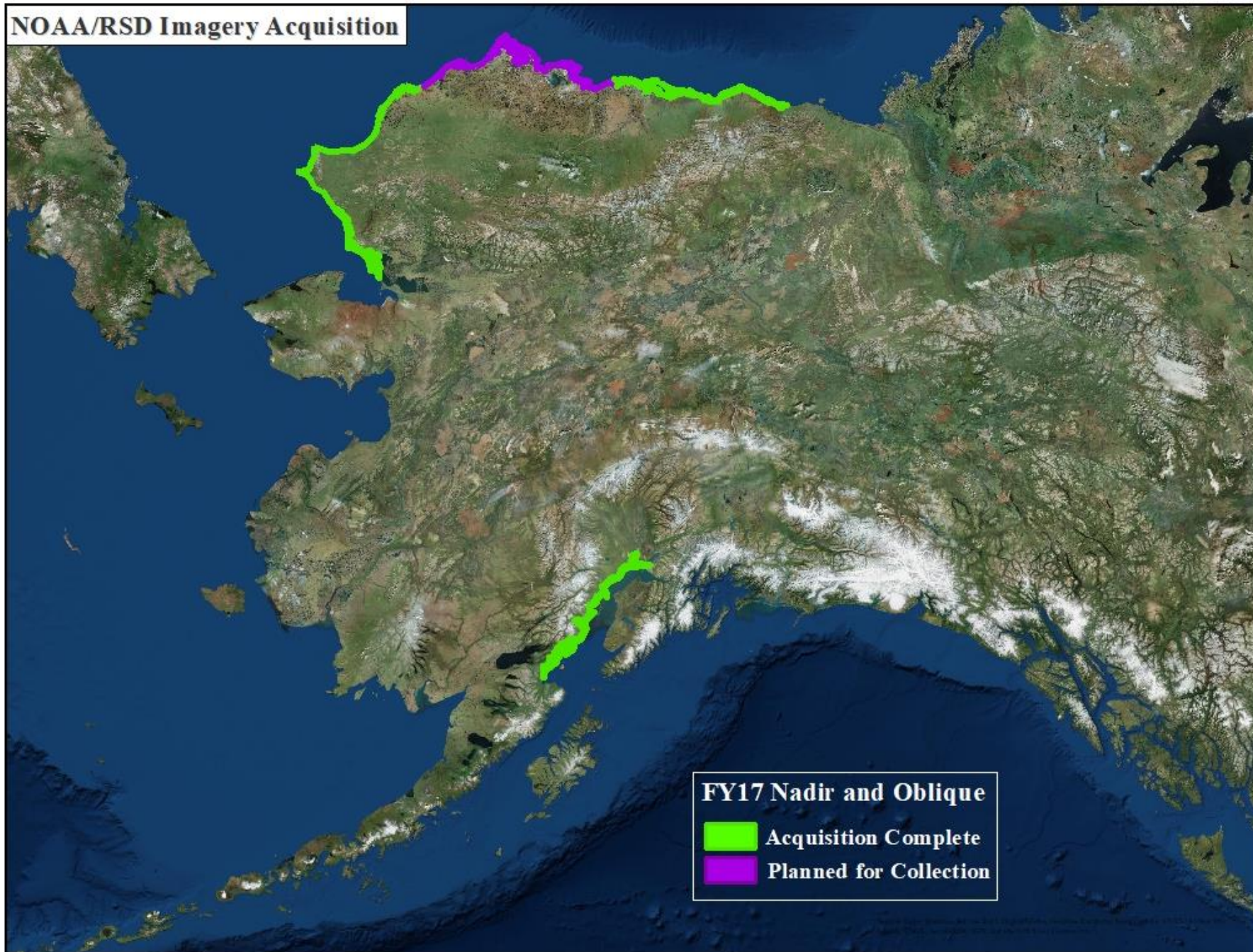


Existing CUSP  
Shoreline,  
areas updated  
In FY17/FY18  
and planned  
updates in  
FY18-21

CUSP benefits/purpose:  
To provide the most current shoreline representation  
Designed to deliver continuous shoreline with frequent updates (available via WMS and online at NOAA Shoreline Data Explorer)  
Referenced to Mean High Water datum (where applicable)  
Includes NOAA and non-NOAA contemporary sources

NGS is presently working with partners in the region such as AK Hydro, The State of Alaska, USGS, NPS, BLM, and US Forestry to identify improved mechanisms for delivering MHW shoreline vectors to NOAA for validation and considered inclusion into CUSP.

## NOAA/RSD Imagery Acquisition



Coastal Nadir imagery 2017

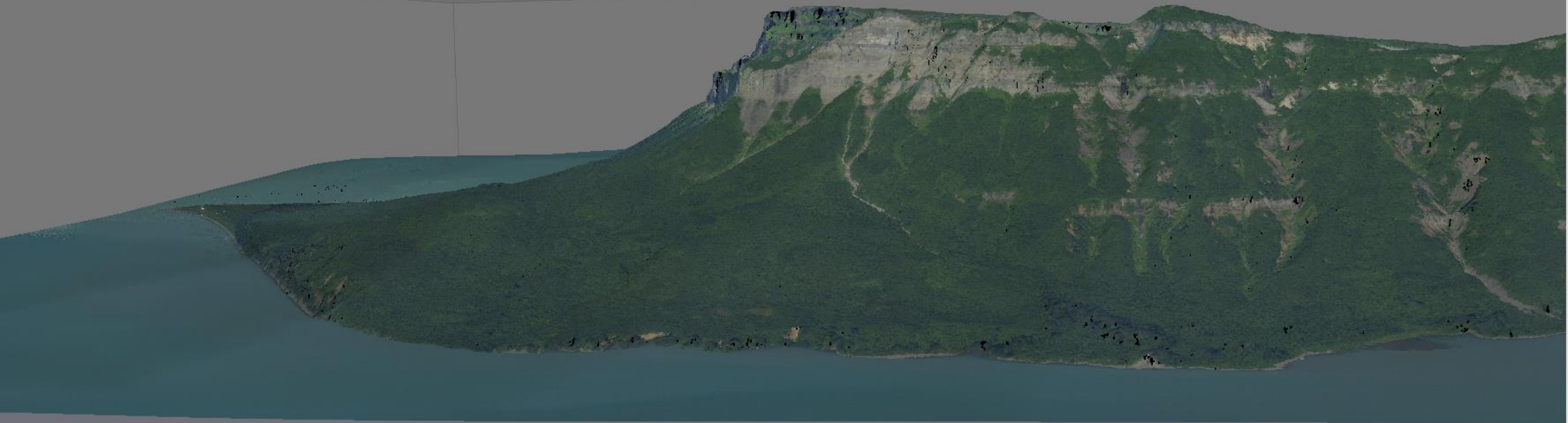
[https://geodesy.noaa.gov/sform\\_archive/alaska/index.html](https://geodesy.noaa.gov/sform_archive/alaska/index.html)

2017 imagery was collected to support SfM analysis and available for download

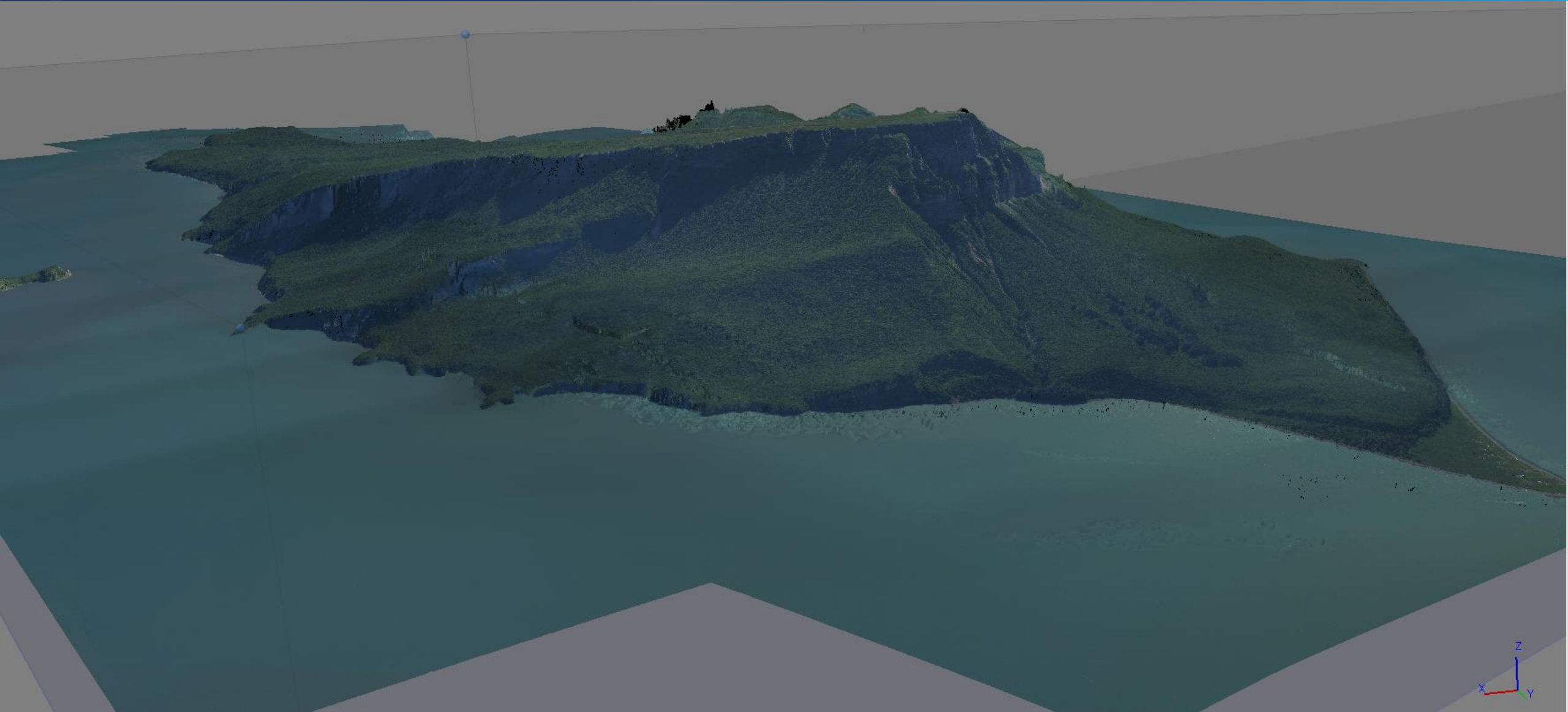
Coastal Oblique imagery 2016

[https://geodesy.noaa.gov/sform\\_archive/coastal/viewer/index.html](https://geodesy.noaa.gov/sform_archive/coastal/viewer/index.html)

# Chisik Island



# Chisik Island



# Contacts

Mike Aslaksen

Chief, Remote Sensing  
Division

NOAA National Geodetic  
Survey

[Mike.Aslaksen@noaa.gov](mailto:Mike.Aslaksen@noaa.gov)

301-801-9024 mobile

240-533-9576 office

Nicole Kinsman

Alaska Regional Advisor  
NOAA National Geodetic  
Survey

[nicole.kinsman@noaa.gov](mailto:nicole.kinsman@noaa.gov)

Telephone (mobile): 202-  
306-5736

