

Coastal Geospatial Services Contract

Alaska Coastal Mapping Summit

February 9th, 2018

Dave Stein

Geographer, Contracting Officer's Representative

Coastal Geospatial Services Contract III

- Brooks Act, Architecture and Engineering, Federal Acquisition Regulation Part 36 – Indefinite Delivery, Indefinite Quantity
- As of August 2016, five prime contractors (Dewberry, Fugro, Quantum Spatial, Tetra Tech, and Woolpert) with more than 75 subcontractors
- Awarded August 2016, ends August 2021
- \$49 million ceiling (shared among the primes)
- Contract III follows successful implementation of two previous Coastal Geospatial Services Contract Awards: 2006 to 2011 and 2011 to 2016

History

Contract I
2006 - 2011

Task Orders: 128
Total Dollars: \$23M
Contractors:

- Dewberry
- Fugro
- Photo Science
- Sanborn

Contract II
2011 - 2016

Task Orders: 156
Total Dollars: \$47M
Contractors:

- Dewberry
- Fugro
- Photo Science
- Woolpert

Contract III
2016 - 2021

Task Orders: 20
Total Dollars: ~\$3M
Contractors:

- Dewberry
- Fugro
- Photo Science
- Tetra Tech
- Woolpert

Contract Services

- **Data Acquisition:** Collection of Lidar, imagery, and bathymetry using a variety of platforms and sensors.
- **GIS Services:** Spatial data development, data management, application development, cartographic product development, and GIS consultation in support of coastal management applications.
- **Thematic Mapping:** Using source data to delineate and derive data products. Creating thematic classes for land cover, environmental sensitivity, benthic habitat, and hazards vulnerability mapping.

Contract Services

- **Quality Assurance and Quality Control:** Third-party review of data deliverables.
- **Technical Support:** Could include scanning of historical imagery, curriculum development, website development, expert consultation, white paper development, and specialized software development

coast.noaa.gov/idiq/geospatial.html

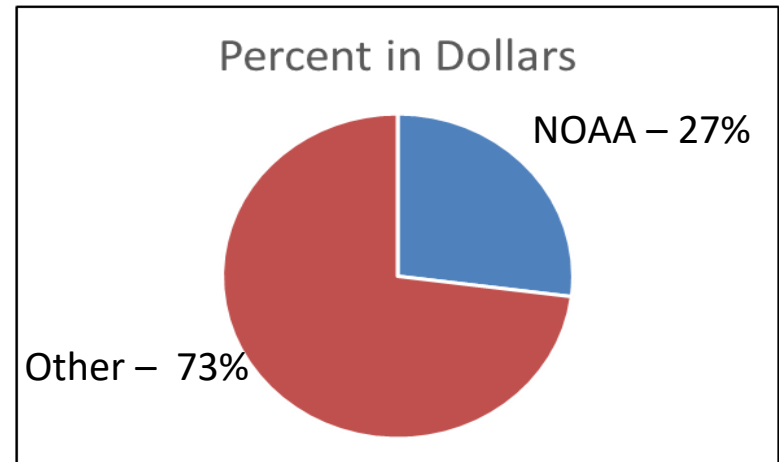
Active Partnerships

Federal:

- Bureau of Ocean Energy Management
- Environmental Protection Agency
- Housing and Urban Development
- National Park Service
- National Oceanic and Atmospheric Administration
- United States Geological Survey

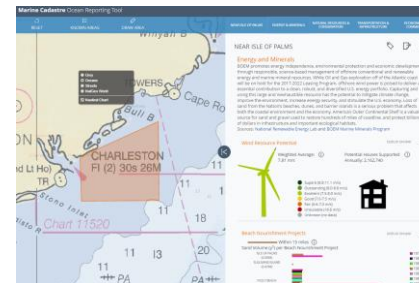
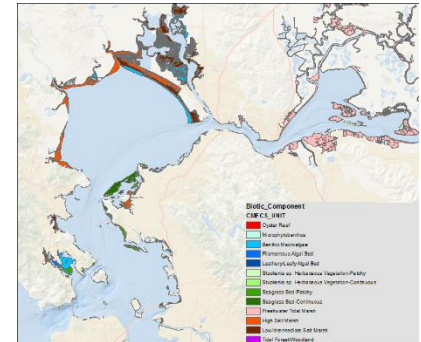
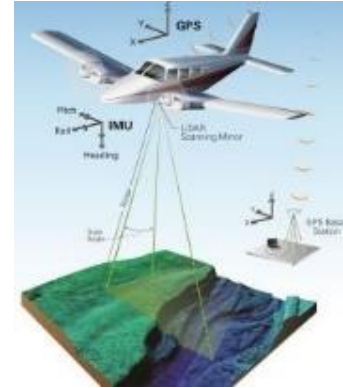
States: California, Connecticut, Georgia, Massachusetts, and New York

Others: Multiple Georgia counties and regional commissions, County of Hawaii



Project Examples FY17-18

- Coastal Imagery – GA Coastal Resources Commission
- Imagery for Seagrass Mapping – State of New York
- Imagery for Seagrass Mapping – State of Massachusetts
- Wild rice Mapping in Lake Superior using Hyperspectral Imagery – EPA/NOAA
- Lidar for Big Island, Hawaii – USGS/NOAA
- Lidar for GA Watersheds – GA DNR
- Benthic Habitat Mapping Lake Michigan – NOAA/EPA/NPS
- Marine Minerals GIS – BOEM
- AIS – Vessel Traffic – BOEM/NOAA/USCG
- Data Development to support Ocean Reporting for Aquaculture - NOAA/BOEM



How Can You Use the Coastal Geospatial Services Contract?

- Meet the requirements
 - Coastal
 - Address a Coastal management issue
 - Available capacity
- Enter into Memorandum of Understanding



Memorandum Process

Phase I – Establish (Two to Three Months)

- ** All financial transactions outside of NOAA require a Memorandum of Understanding
- Requesting agency contacts our office to start the process
- OCM sends a template
- Requesting agency fills in MOU template and returns
- Department of Commerce attorneys review, approve, and clear
- Requesting agency approves and signs
- If there's funding involved, an invoice is sent to requesting agency by NOAA Finance
- Upon receipt of funds, contracting can begin!

Contract Benefits

1. Competition is already done
2. Streamlined process
3. Access to industry leaders with proven capabilities
4. Contract management provided at small percentage of total cost (2%)
5. NOAA Office for Coastal Management technical expertise provided at no cost

A large sea turtle is swimming underwater in clear blue water. The turtle is the central focus, with its head and front flippers visible. The water is bright and clear, with some ripples on the surface. The turtle's shell is dark with some lighter patterns. The overall scene is peaceful and natural.

Questions?

Dave.Stein@noaa.gov

(843) 740-1310

coast.noaa.gov/idiq/geospatial.html

Credit: Mark Sullivan, NOAA