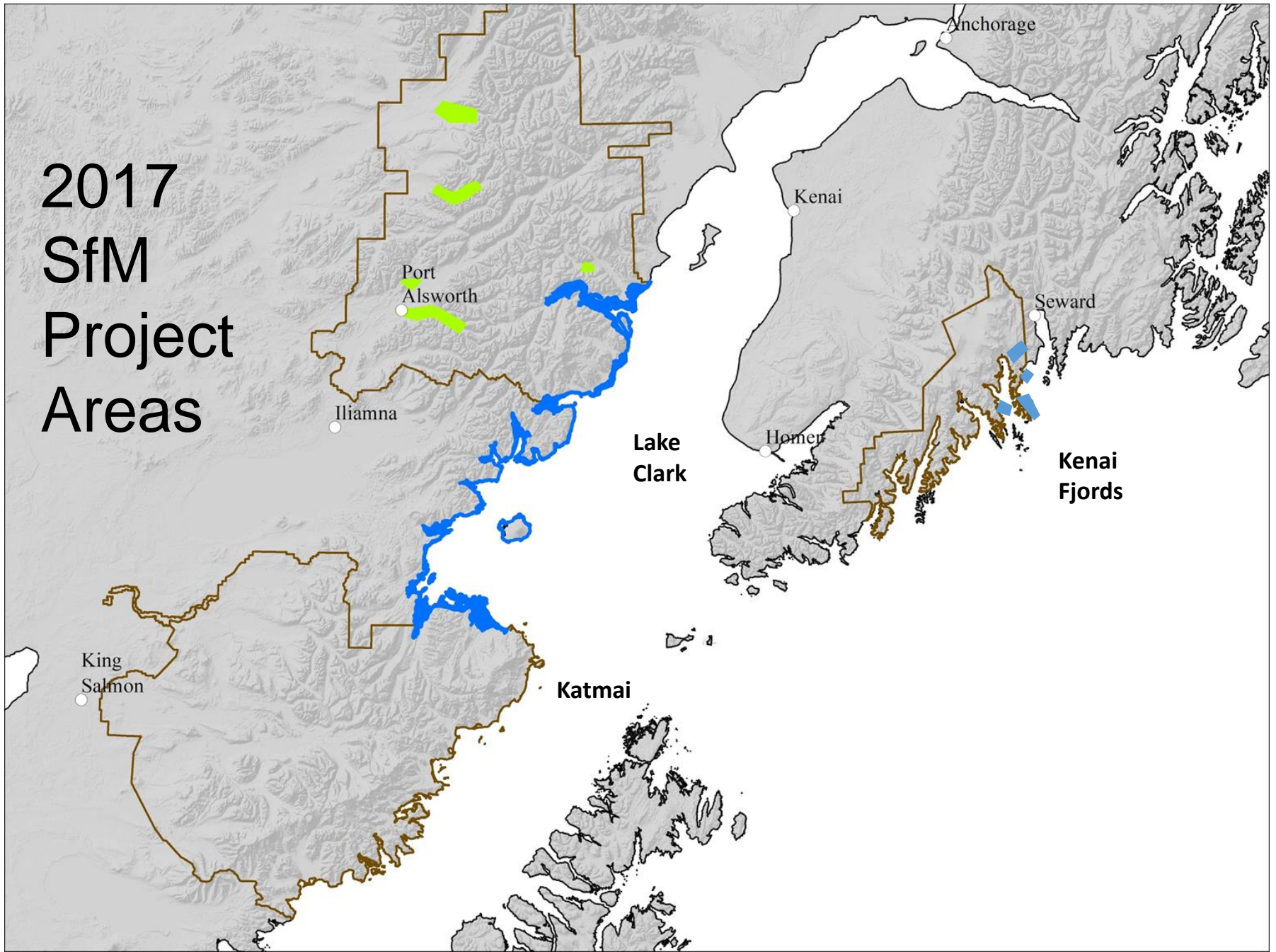


An aerial photograph of a massive glacier flowing through a valley. The glacier is a mix of white and light blue, with visible crevasses and moraine ridges. The surrounding terrain is rugged and rocky, with some green vegetation on the slopes. A semi-transparent white rectangular box is overlaid on the upper part of the image, containing the title text in a dark blue font.

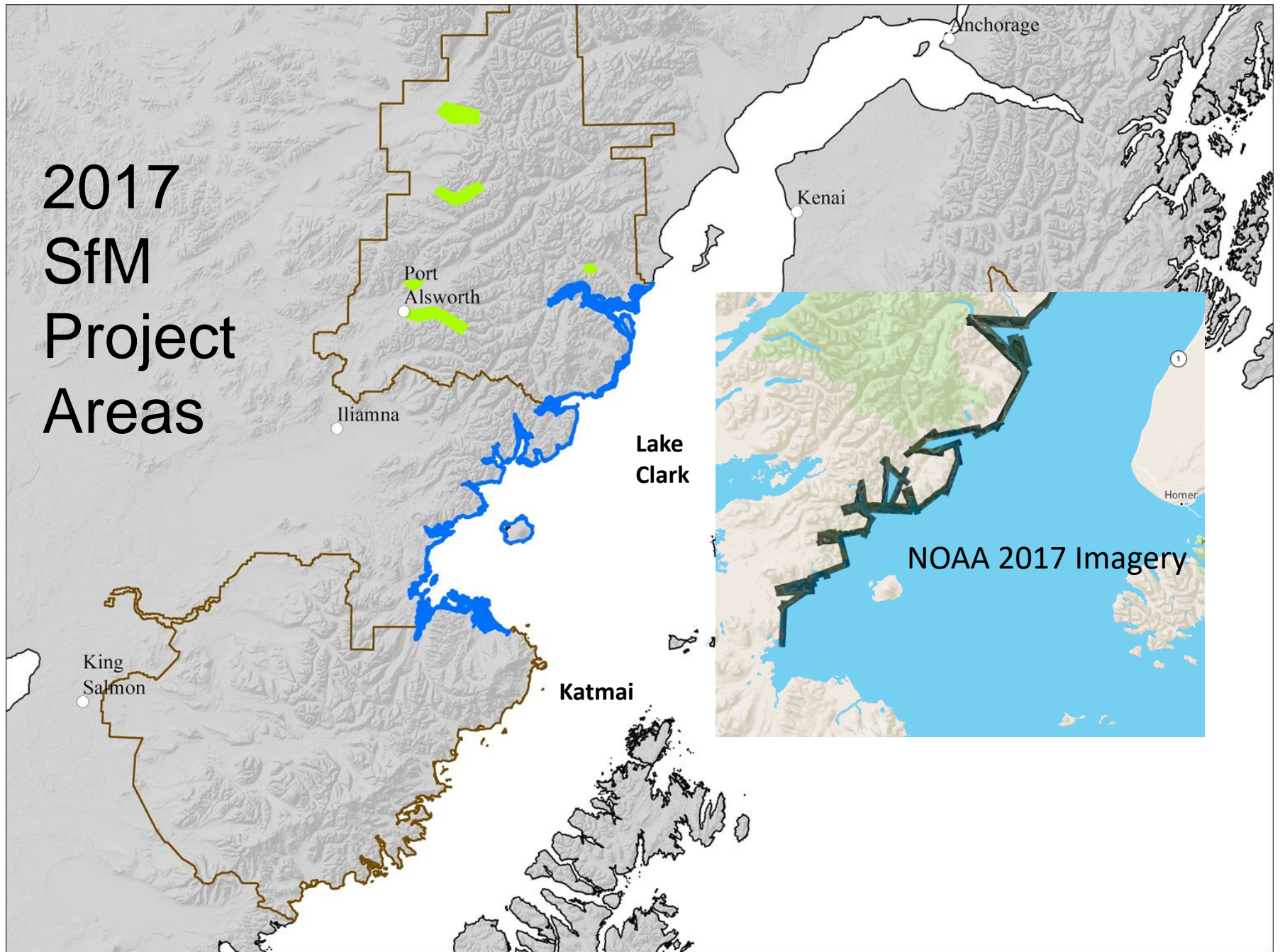
National Park Service Coastal Mapping Operations 2017 - 2018

Chad Hults, Tahzay Jones, Sarah Venator

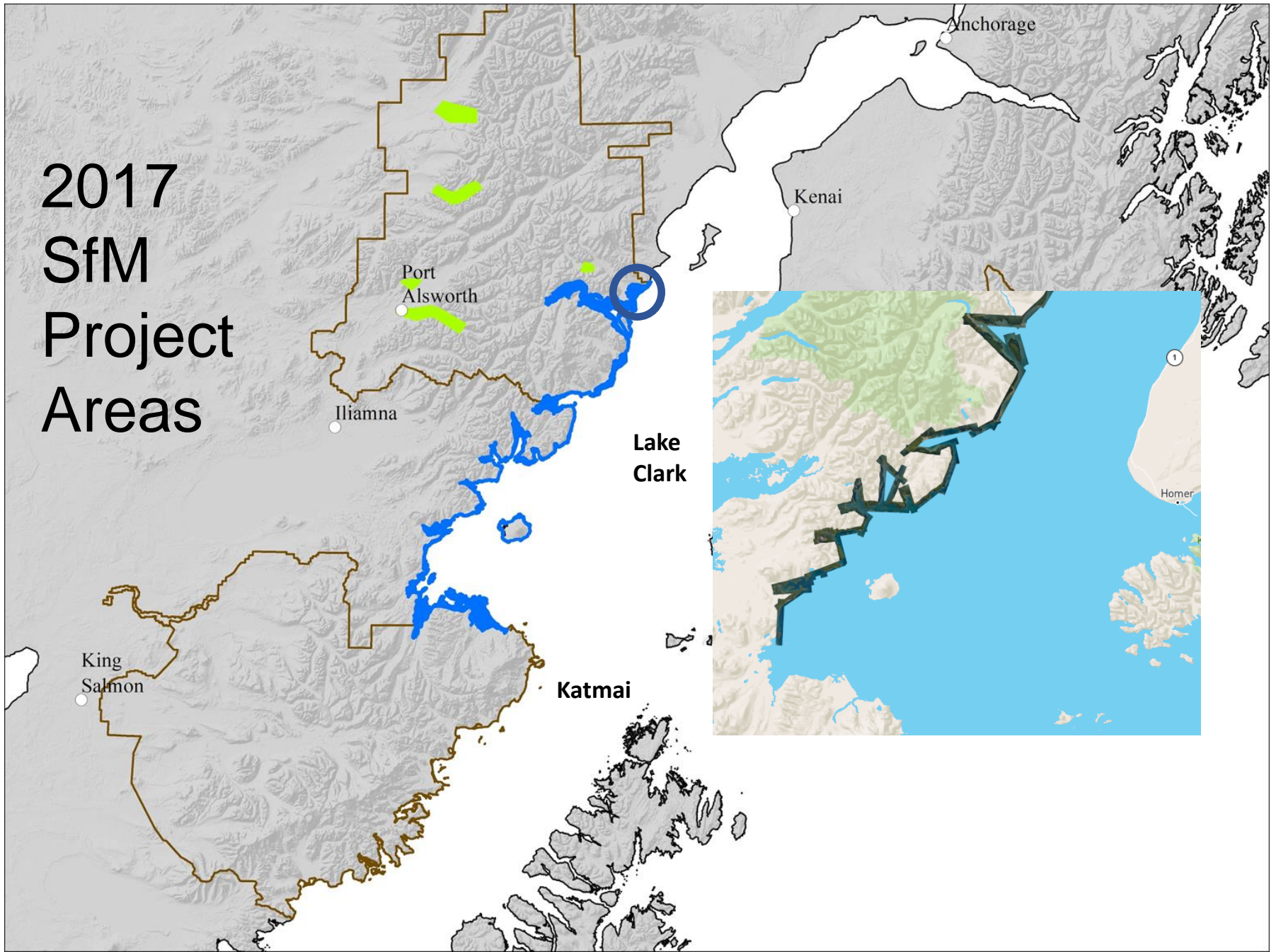
2017 SfM Project Areas



2017 SfM Project Areas



2017 SfM Project Areas



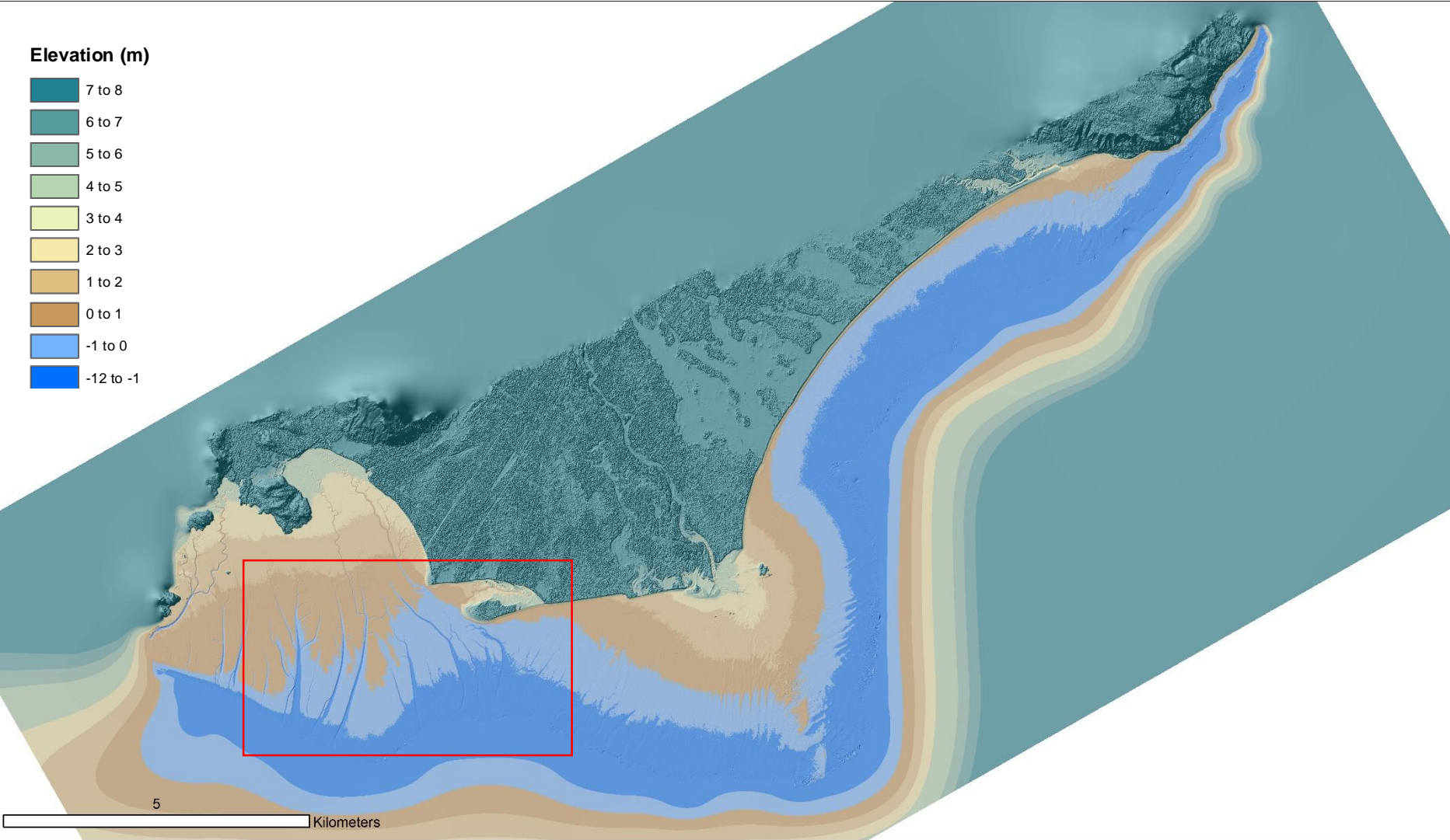
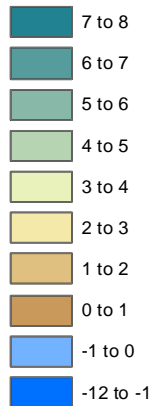




5

Kilometers

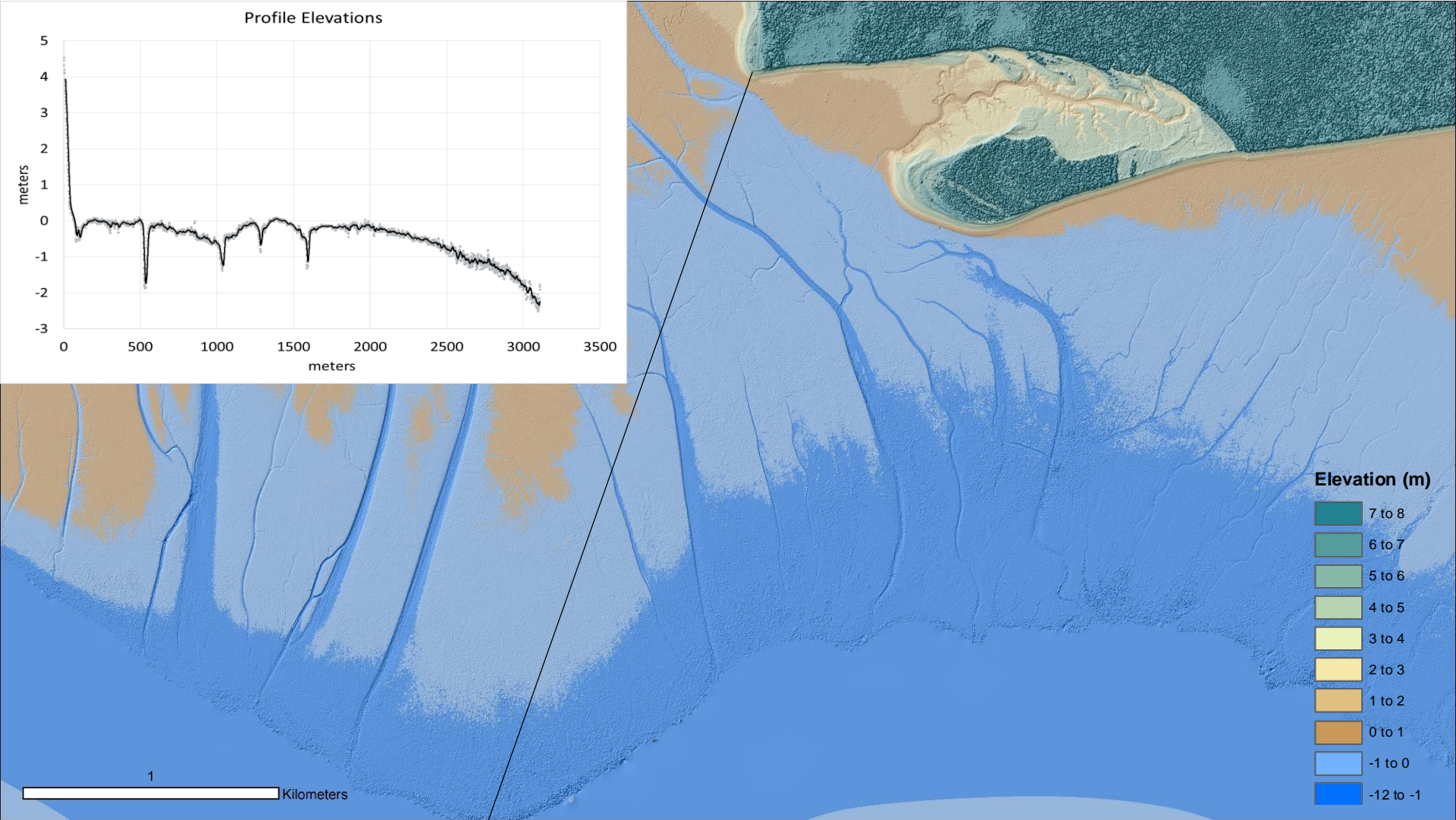
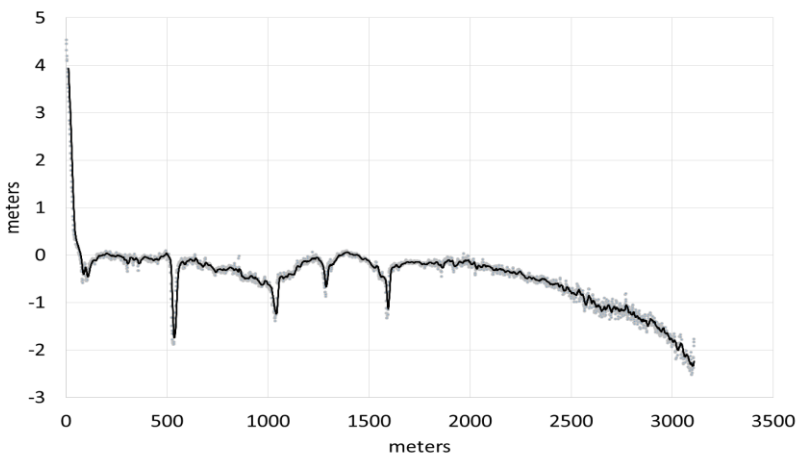
Elevation (m)



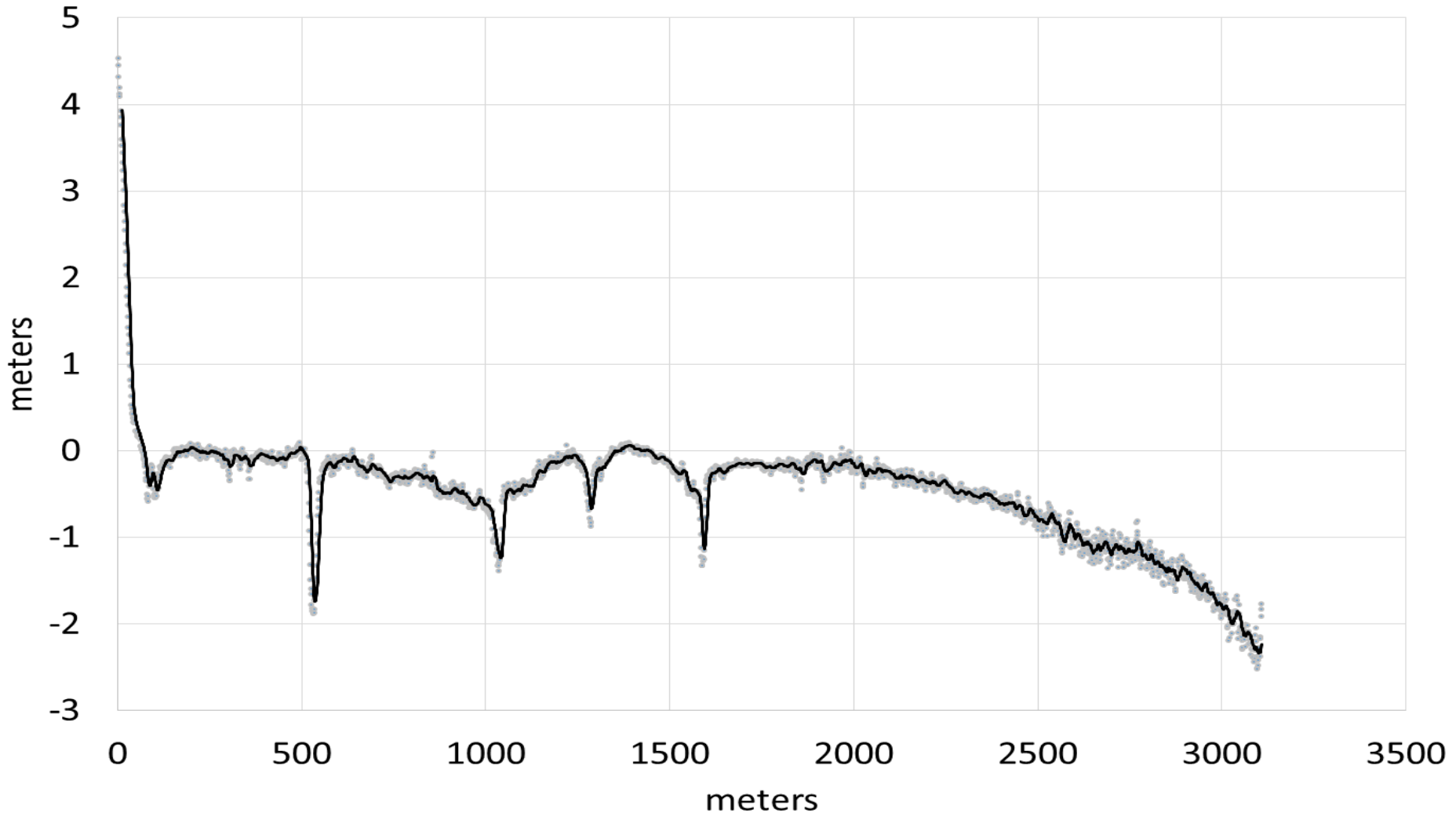
5 Kilometers



Profile Elevations

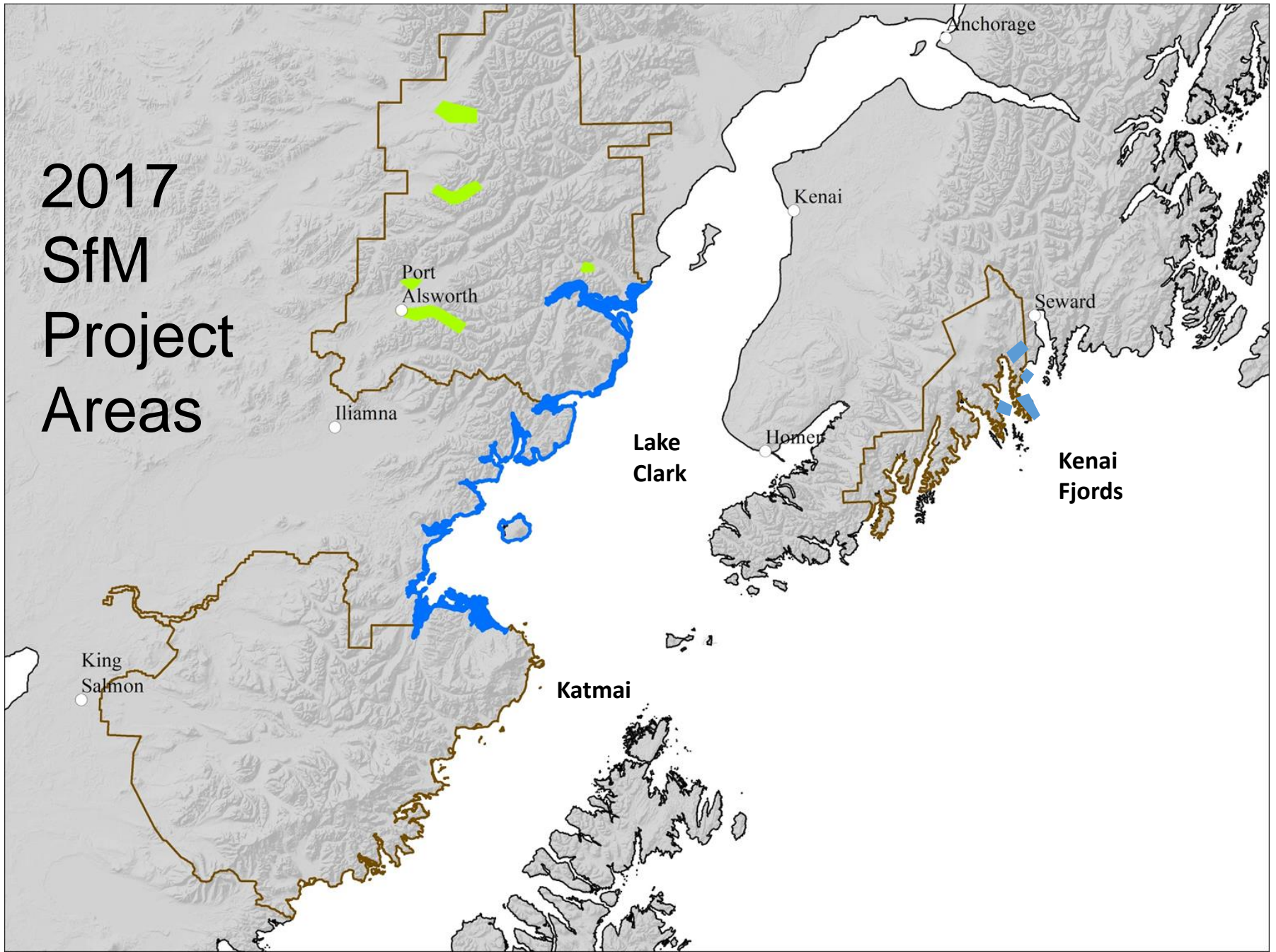


Profile Elevations

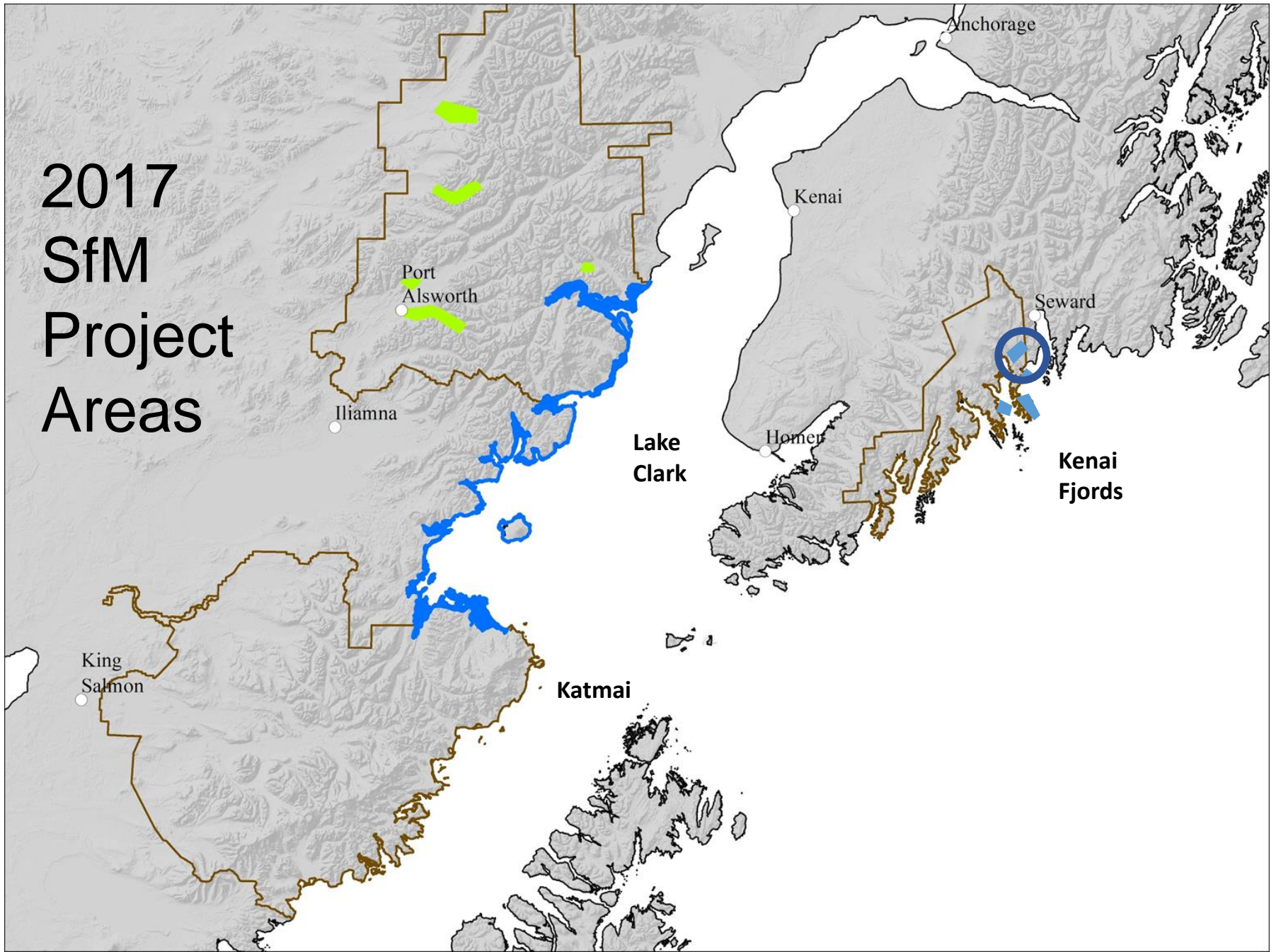




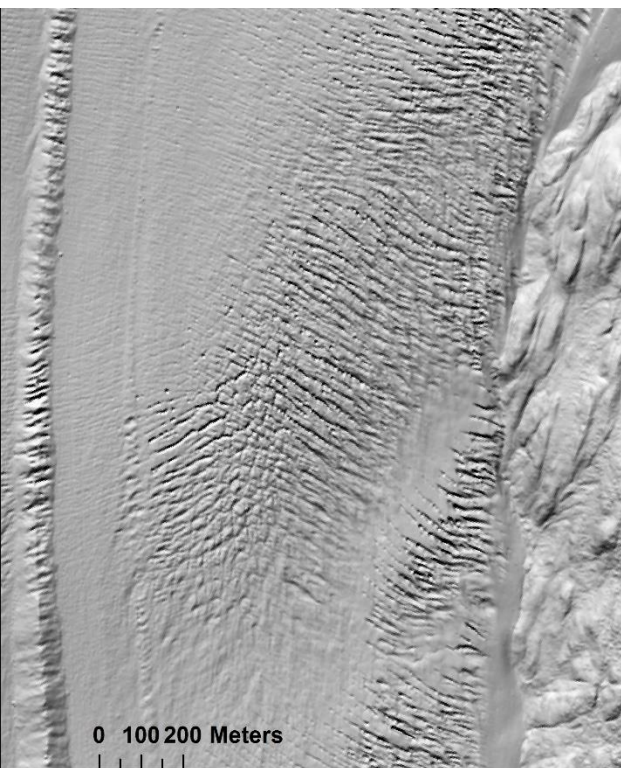
2017 SfM Project Areas



2017 SfM Project Areas



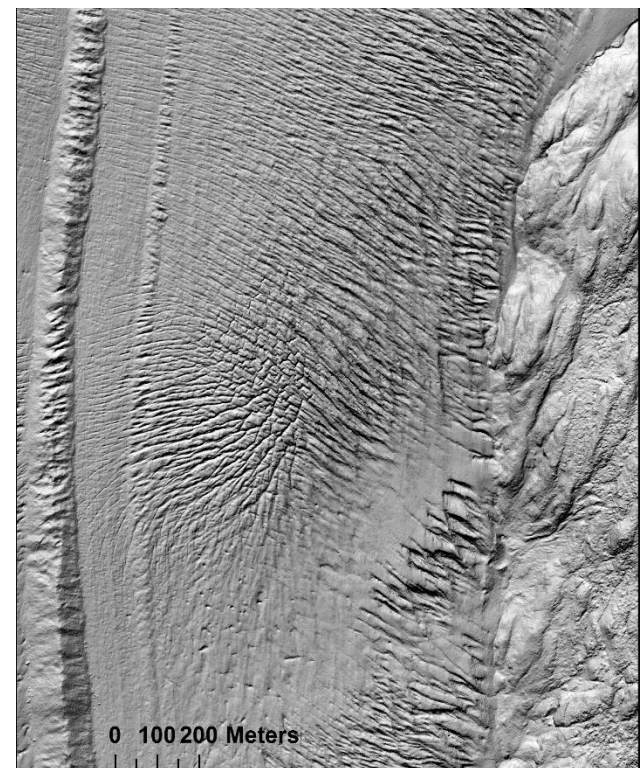
2008 LiDAR 1m

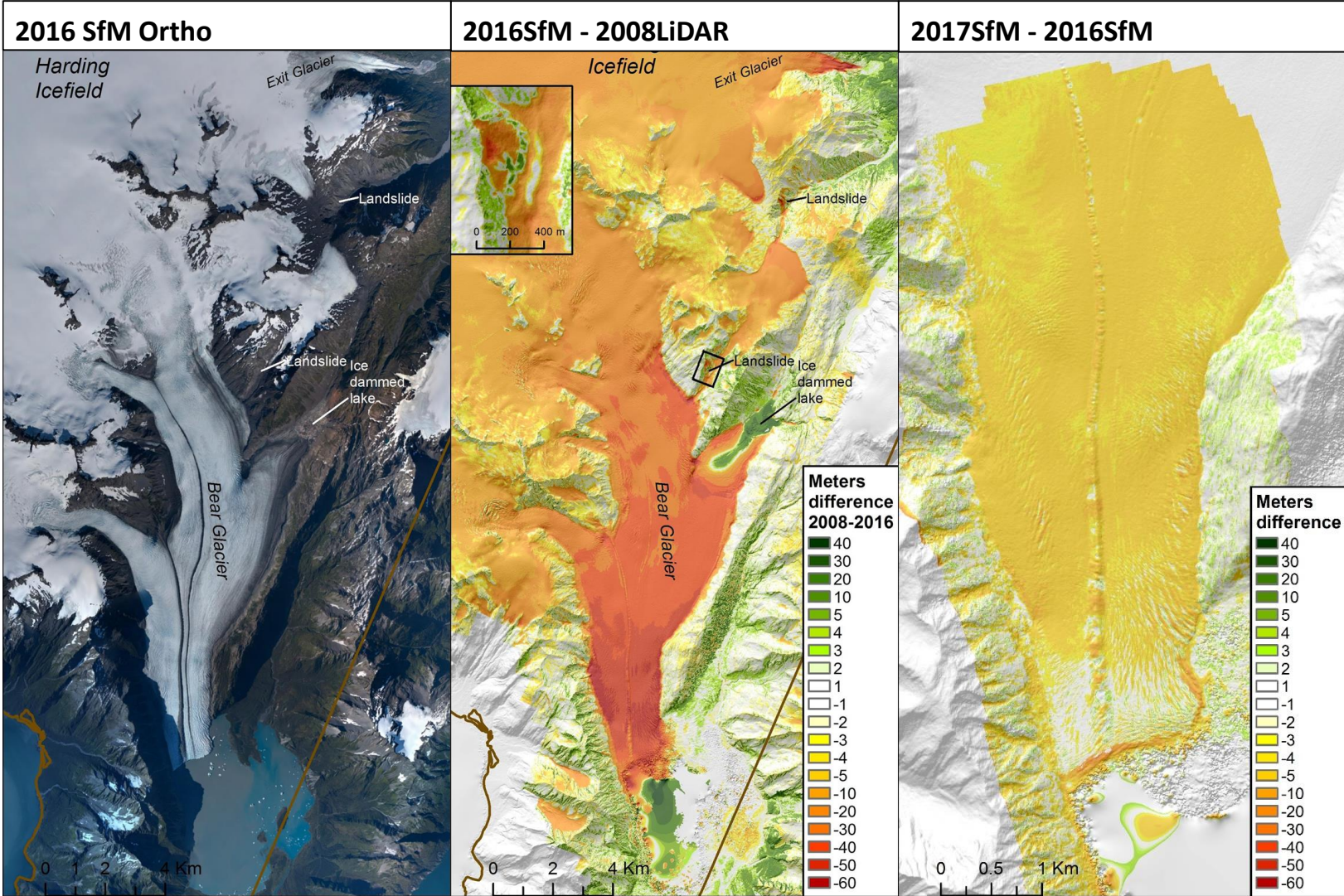


2016 SfM 2m

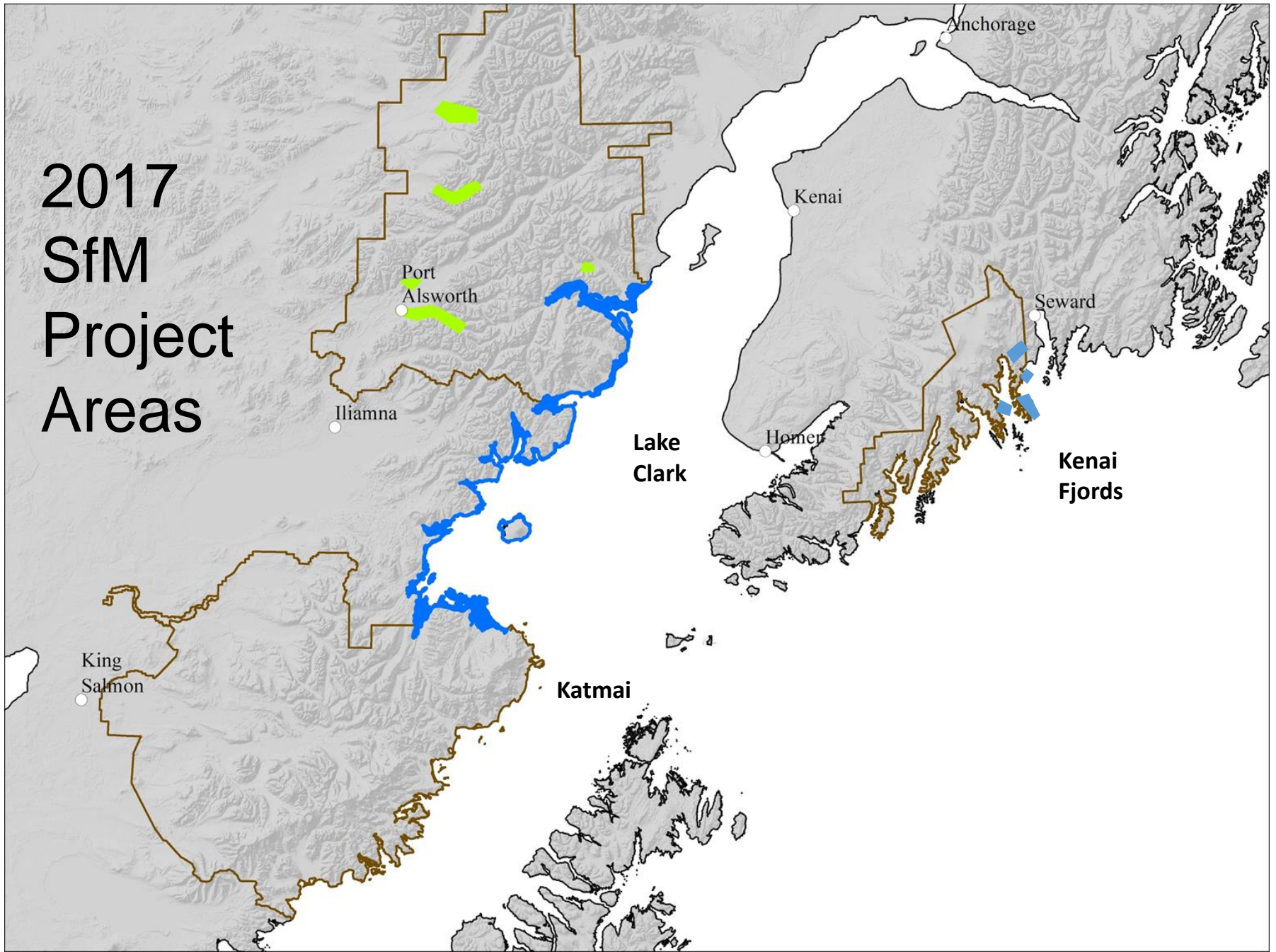


2017 SfM 0.2m

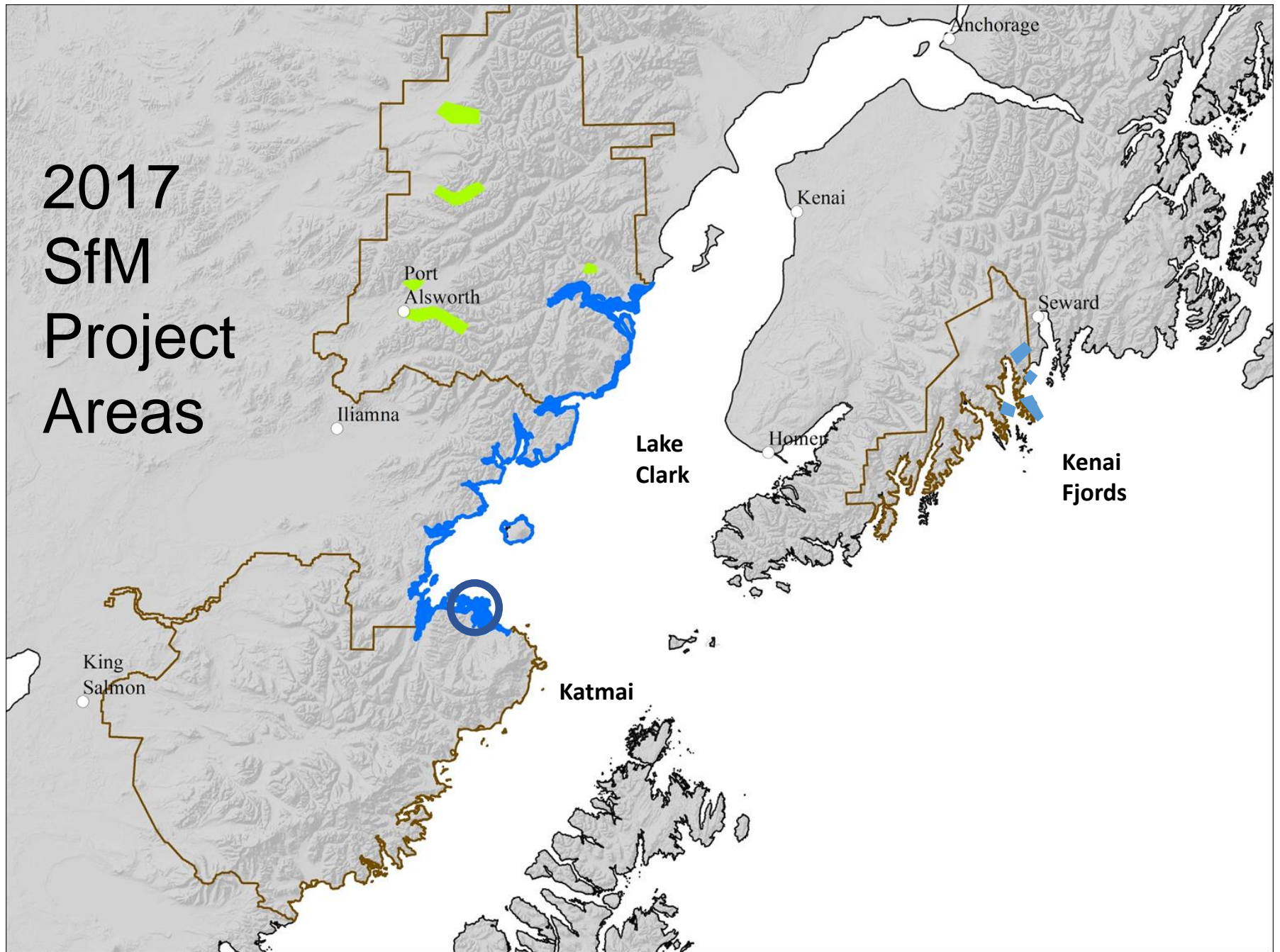


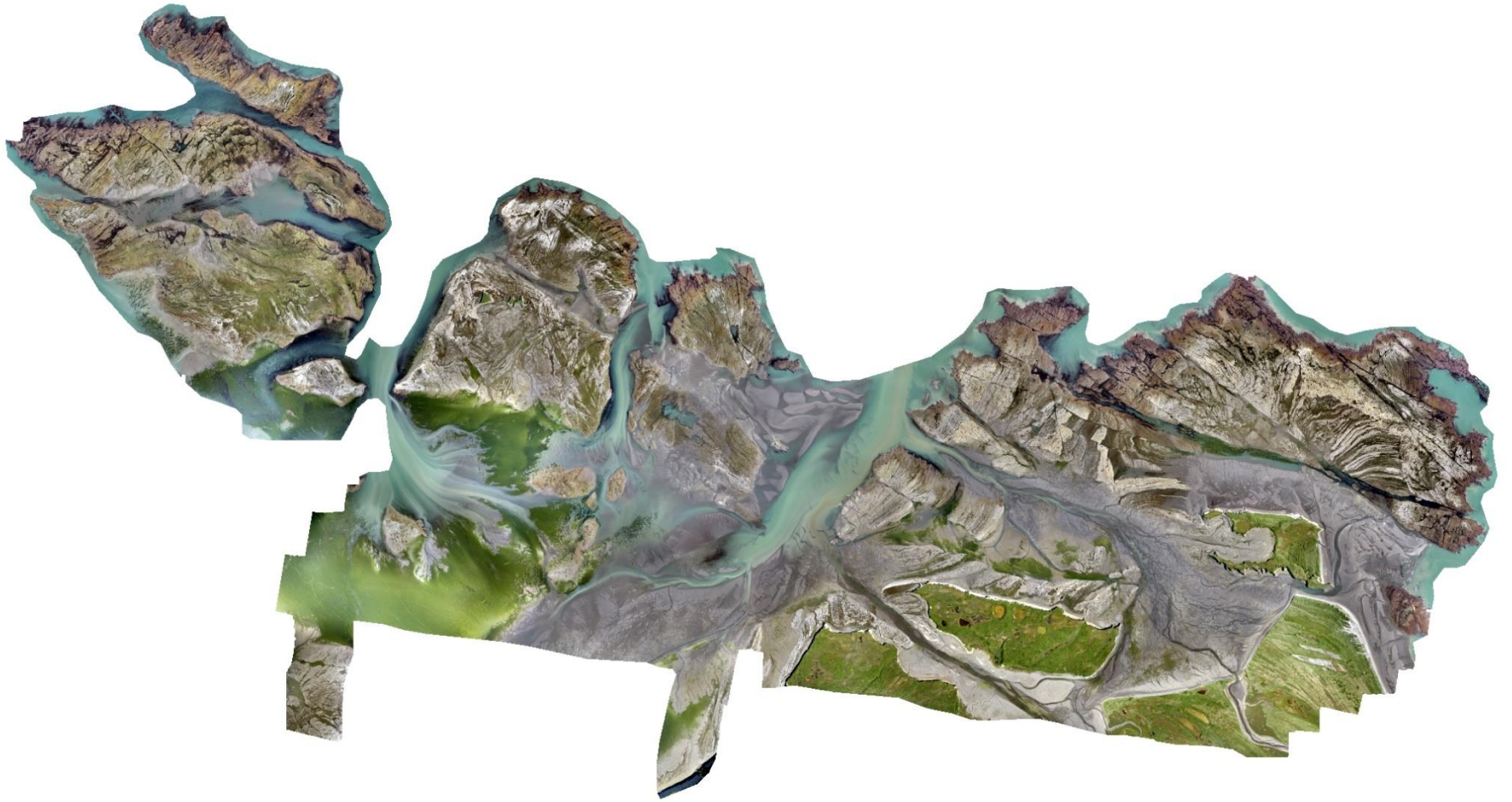


2017 SfM Project Areas

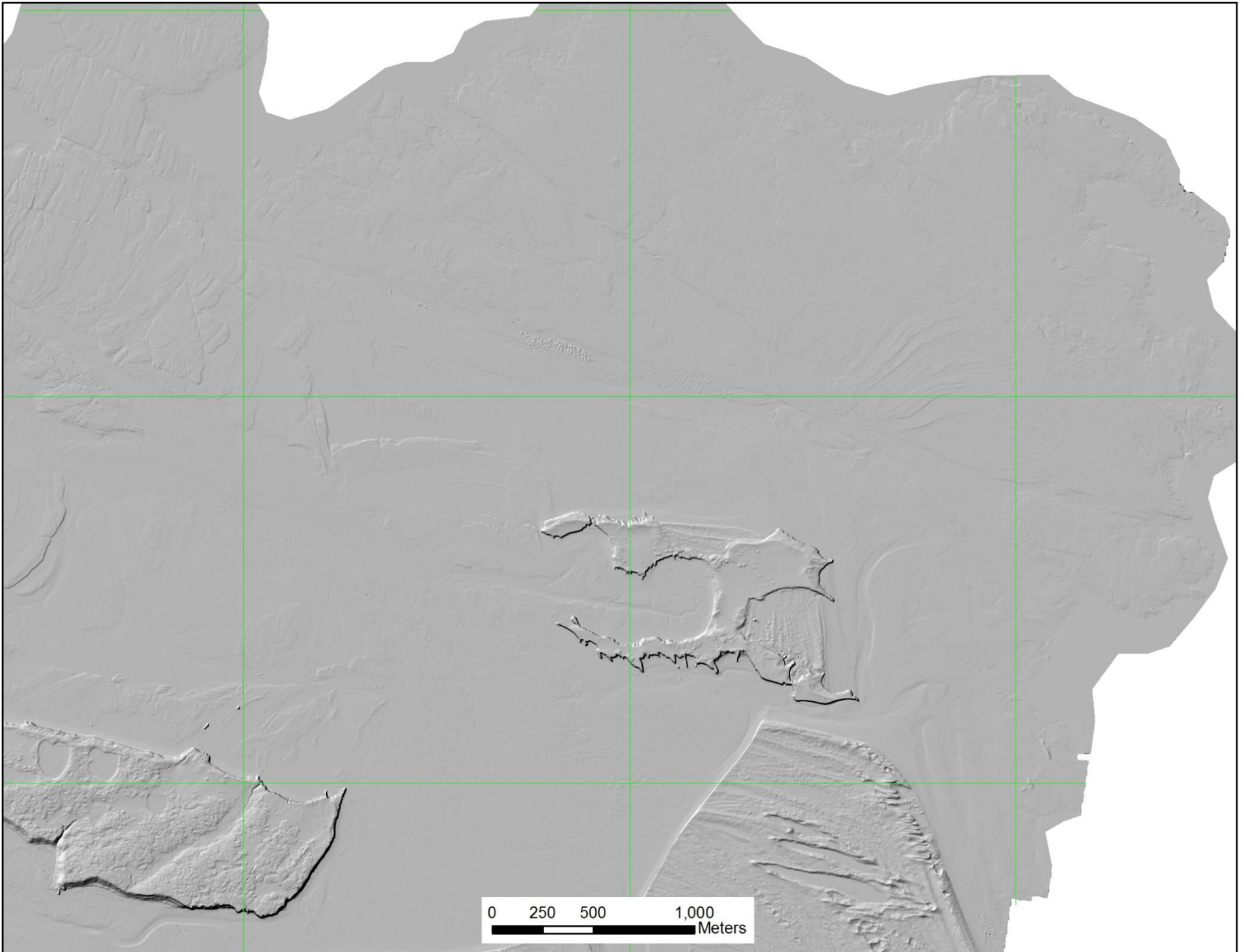


2017 SfM Project Areas



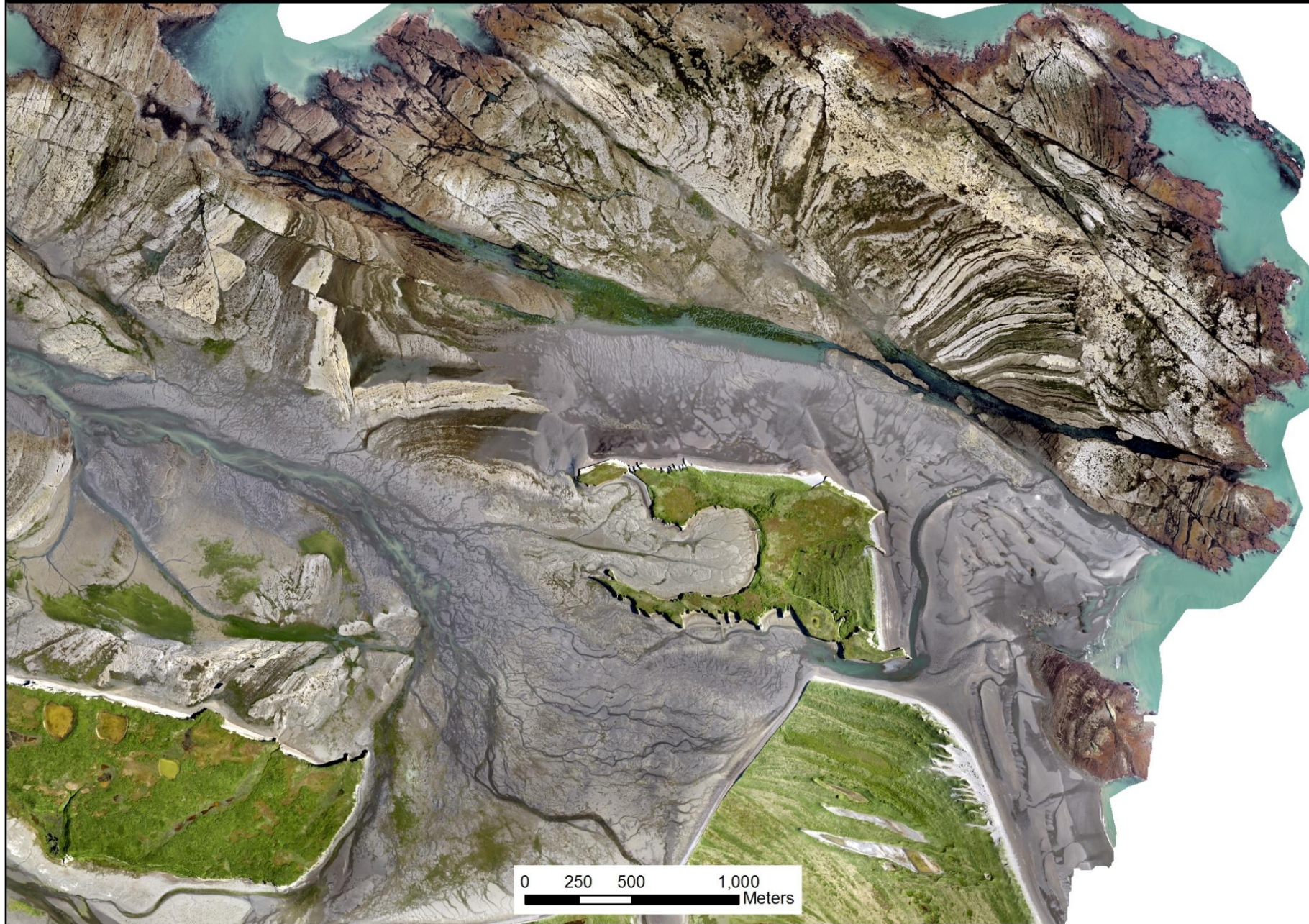


0 750 1,500 3,000
Meters



0 250 500 1,000
Meters

Douglas Reef, Kamishak Bay, Alaska

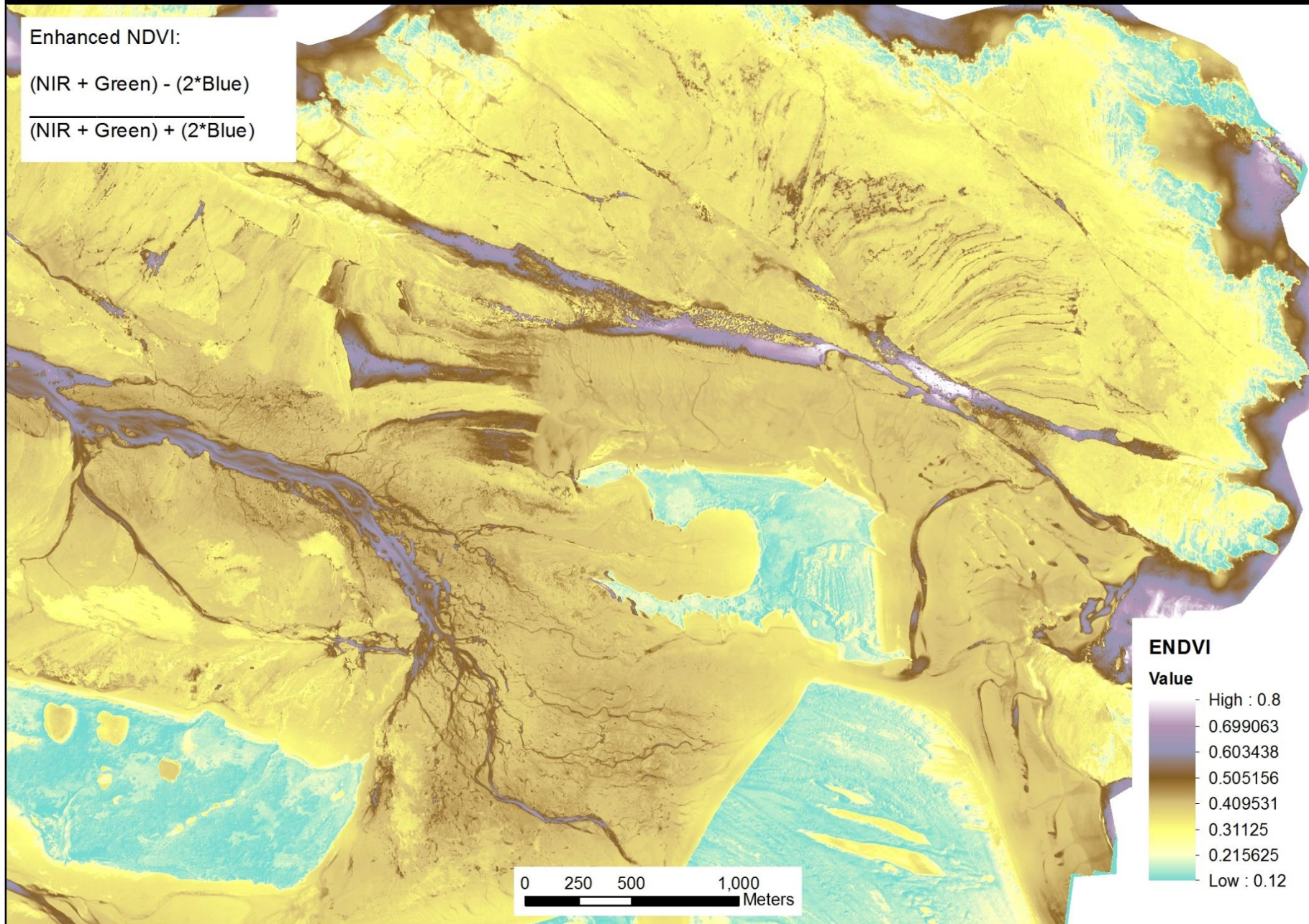


Douglas Reef, Kamishak Bay, Alaska

Enhanced NDVI:

$(\text{NIR} + \text{Green}) - (2 * \text{Blue})$

$(\text{NIR} + \text{Green}) + (2 * \text{Blue})$



ENDVI

Value

- High : 0.8
0.699063
0.603438
0.505156
0.409531
0.31125
0.215625
- Low : 0.12

0 250 500 1,000
Meters

LIDAR for 2018

Katmai NP

Hallo Bay

Takli Island

Katmai Bay

Lake Clark NP

Silver Salmon

Chinitna Bay

SfM for 2018

Katmai & Lake Clark NP

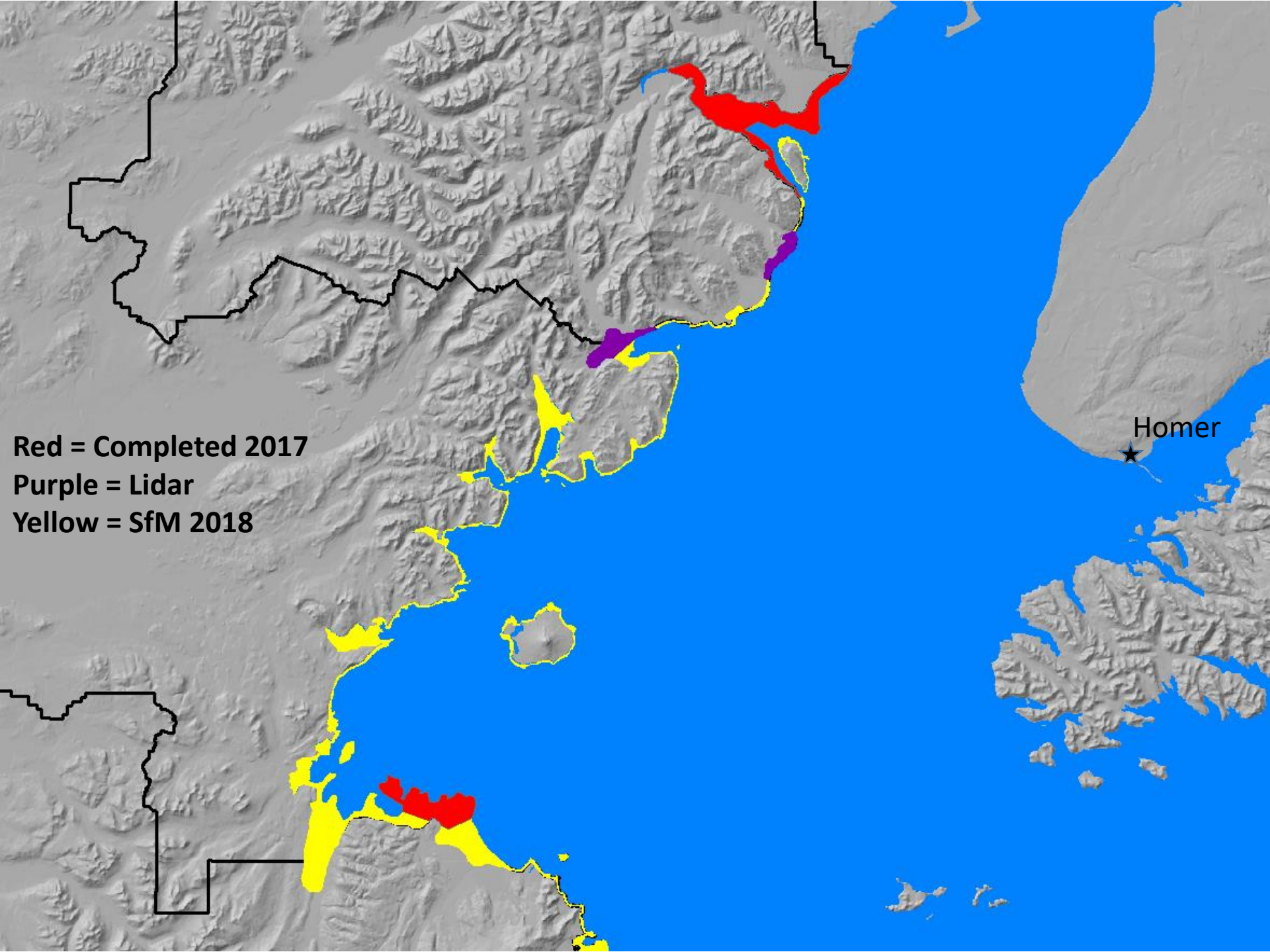
Salt Marshes

I&M Coastal
Monitoring Plots

Complete Lower Cook
Inlet

Northwest Arctic

Seward Peninsula
Outer Coasts, Lagoons,
and River Mouths



Homer



Red = Completed 2017
Purple = Lidar
Yellow = SfM 2018

New SfM Acquisition Areas NW AK



2004 NOAA Lidar



2018 SfM Collection AOI

An aerial photograph of a massive glacier flowing through a mountain range. The glacier is a deep blue color, indicating its age and thickness. It is surrounded by rugged, rocky terrain with patches of green vegetation. The text "Thank You" is overlaid in the center of the image.

Thank You

Chad Hults, Tahzay Jones, Sarah Venator