



U. S. Coast Guard Seventeenth District Brief



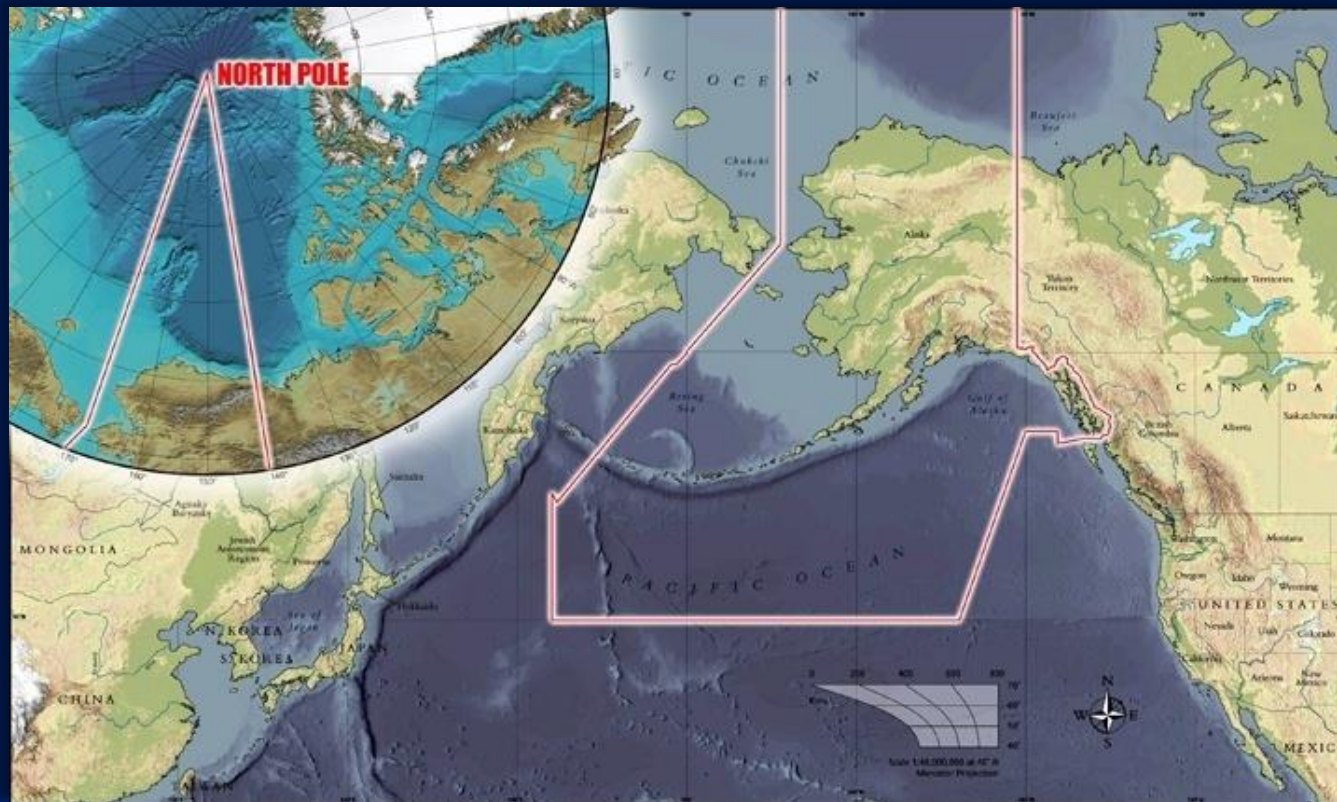
IWG-OCM Alaska Coastal Mapping
Summit, Feb 2017

*We Stand the Watch
on the Last Frontier*





Seventeenth District



2,500 active duty, reserves, auxiliaries & civilians support operations in Alaska encompassing 3,853,500 sq. miles and more than 44,000 miles of coastline.



Seventeenth District Assets



★ Sector Offices

★ Marine Safety Detachments

★ Small Boat Stations

★ Patrol Boats

★ Air Stations

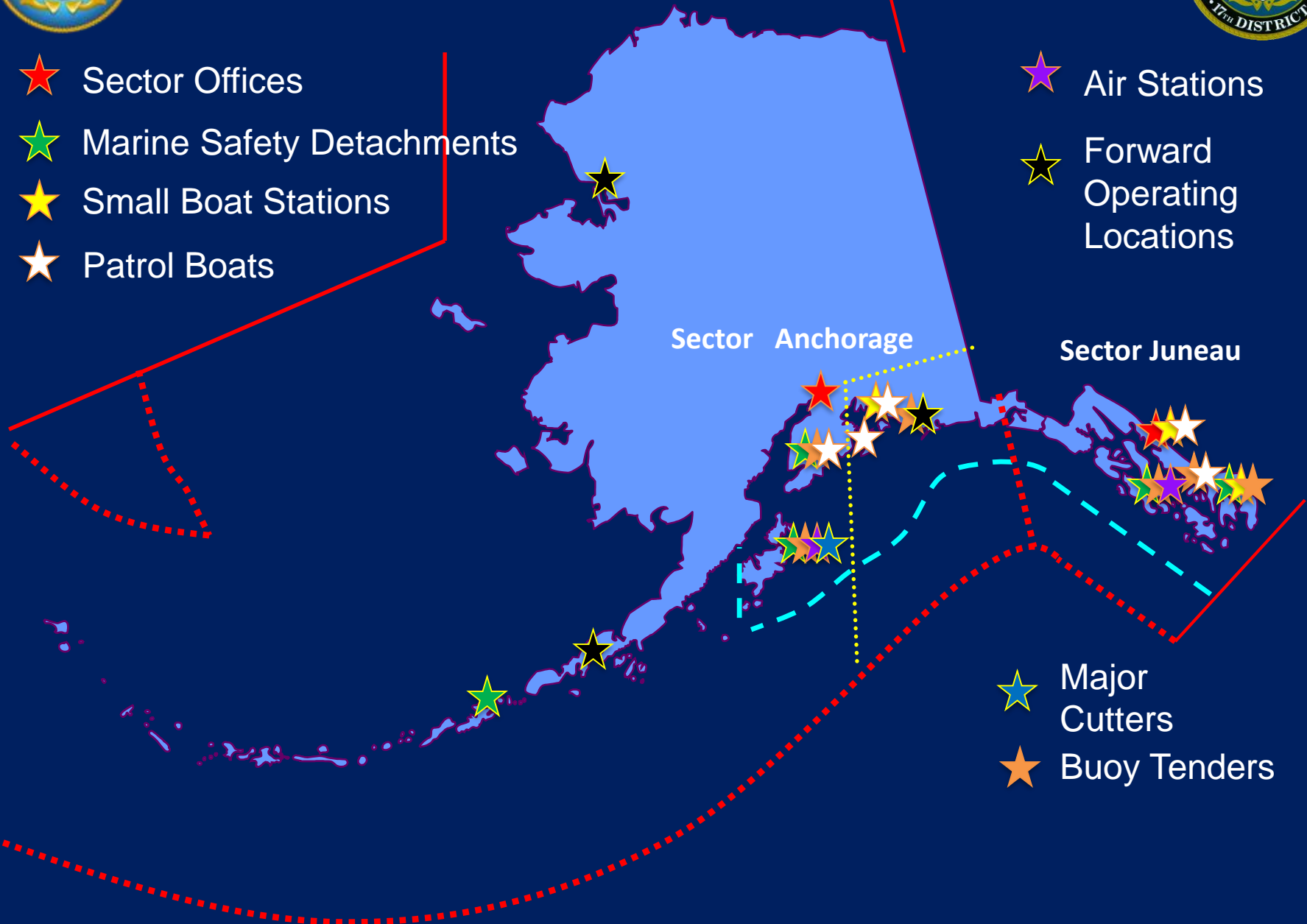
★ Forward Operating Locations

Sector Anchorage

Sector Juneau

★ Major Cutters

★ Buoy Tenders





Coast Guard Arctic Strategy

D17 Supporting Operational Activities



– Improving Awareness

- D17 Arctic Fusion Center
- Arctic Domain Awareness Center
- Information sharing with Canada/DoD

– Modernizing Governance

- Port Access Route Study
- Polar Code outreach
- Arctic Waterways Safety Committee

– Broadening Partnerships

- International Coordination (oil spills, search and rescue, fisheries)
- Tribal engagement
- Federal/State/local coordination
- Support to Arctic commissions, councils, etc.

- ***Perform Coast Guard missions in the Arctic – SAR, environmental protection, aids to navigation, science support, marine safety***





Typical Arctic Shield Force Lay-Down

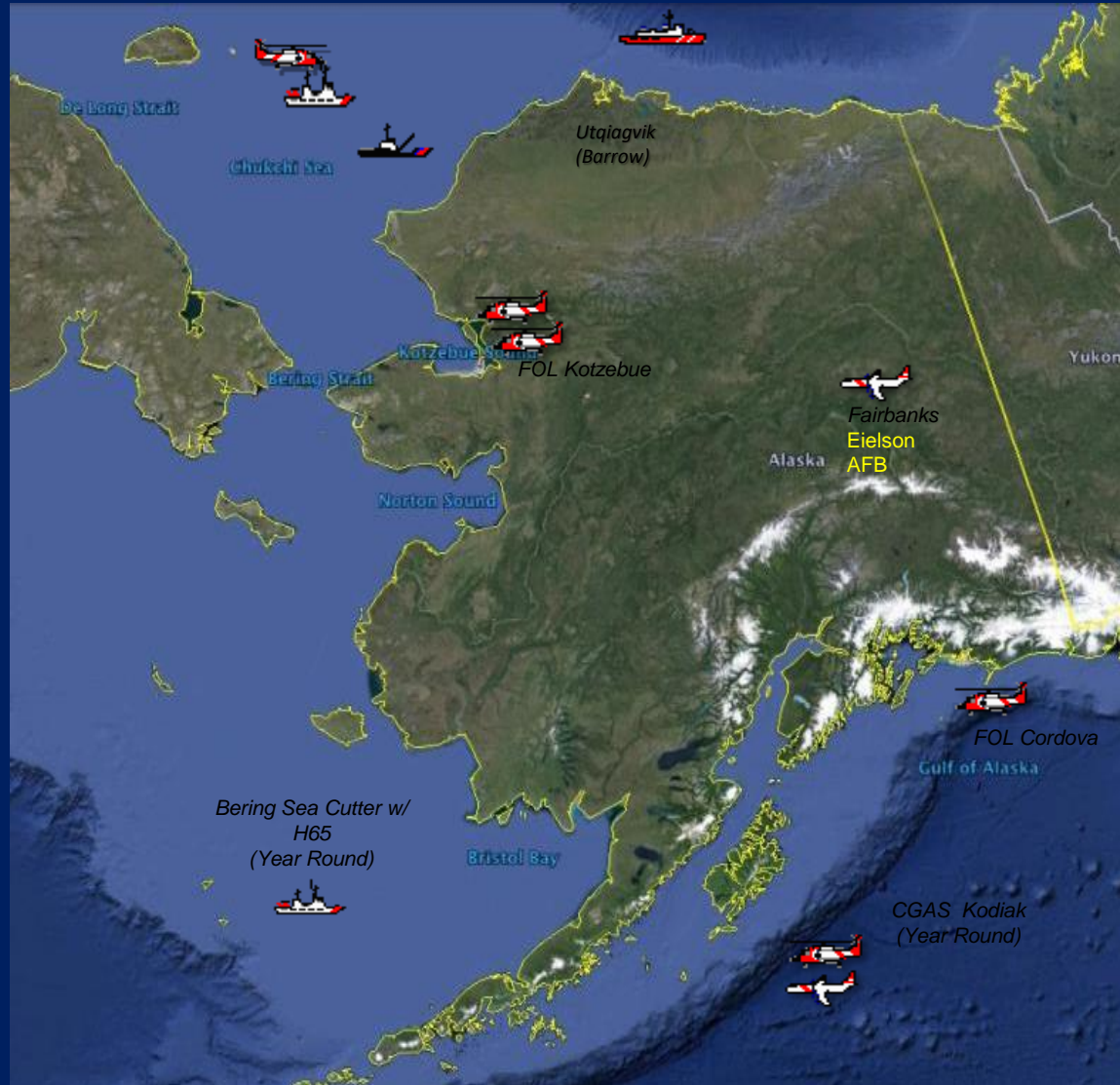


Cutter/Air Ops

- High Endurance Cutter
- Medium Endurance Cutter
- Sea Going Buoy Tender
- Polar Ice breaker
- Rotary/Fixed Wing Aircraft

Multiple Missions

- Law Enforcement
- Response Operations
- Sovereignty Presence
- Command/Control
- Defense Support
- Community Relations
- Aids To Navigation
- Scientific Support





Port Access Route Studies



- Bering Strait PARS:
 - Four-mile-wide two-way route from Unimak Pass through Bering Strait.
 - “Areas to Be Avoided” established around areas of heightened environmental concern.
 - Russian Participation led to joint proposal to IMO for adoption.
 - Extensive assistance from NOAA OCS to survey proposed route.





Shallow Water Aids to Navigation Ops



- USCG Maintains seasonal buoys in shallow draft waterways:
 - Local areas surveyed by boat using HYPAC.
 - Data files exported to cutter navigation suite to prevent grounding.



Entering Kuskokwim Bay

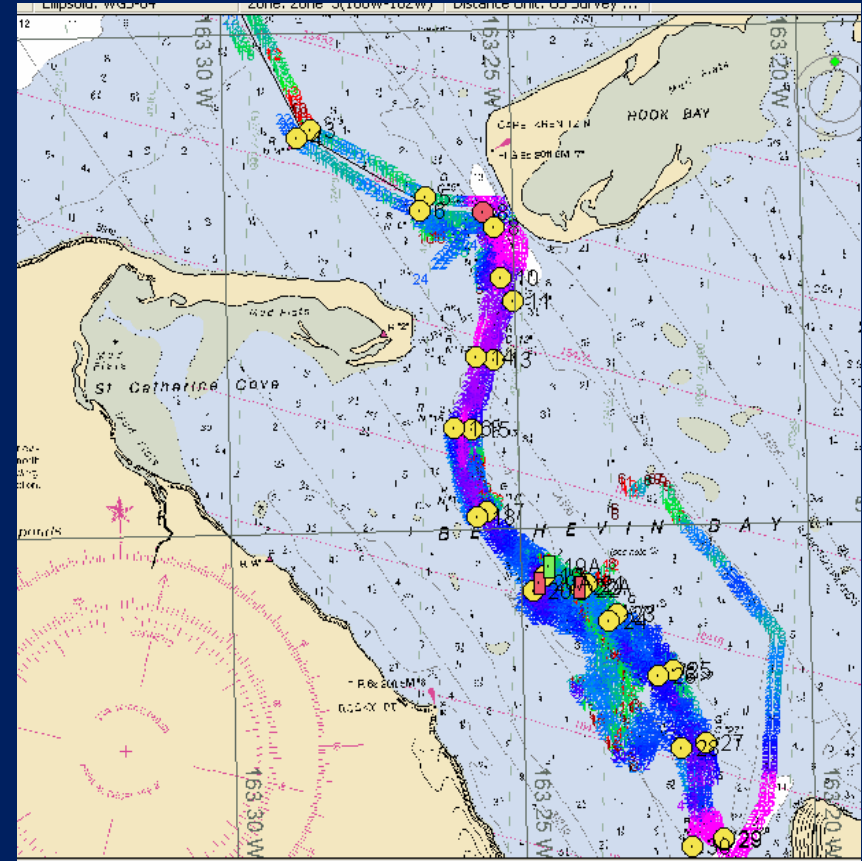
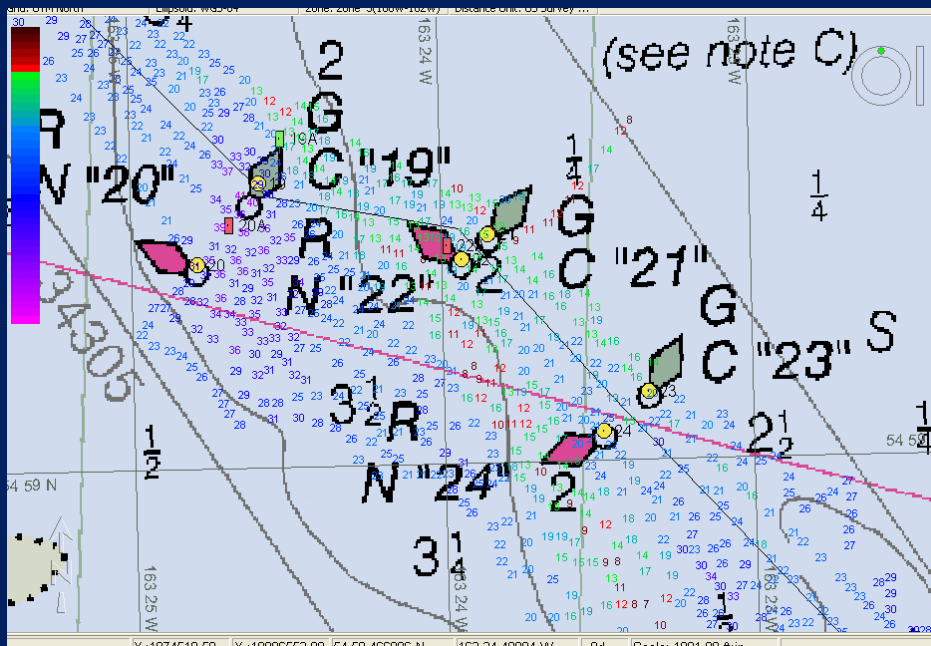




Shallow Water Aids to Navigation Ops



- Example from False Pass & Bechevin Bay:
- Composite representation from ~2 days of boat surveys.
- Data is used to reposition buoys depending on shoaling.



- 3 buoys relocated to mark deepest water, about 165 yards wide.



Questions?



Seventeenth Coast Guard District

*Standing the watch on the last frontier
yesterday, today and tomorrow*