



State Geospatial Coordination for Coastal Mapping in Alaska

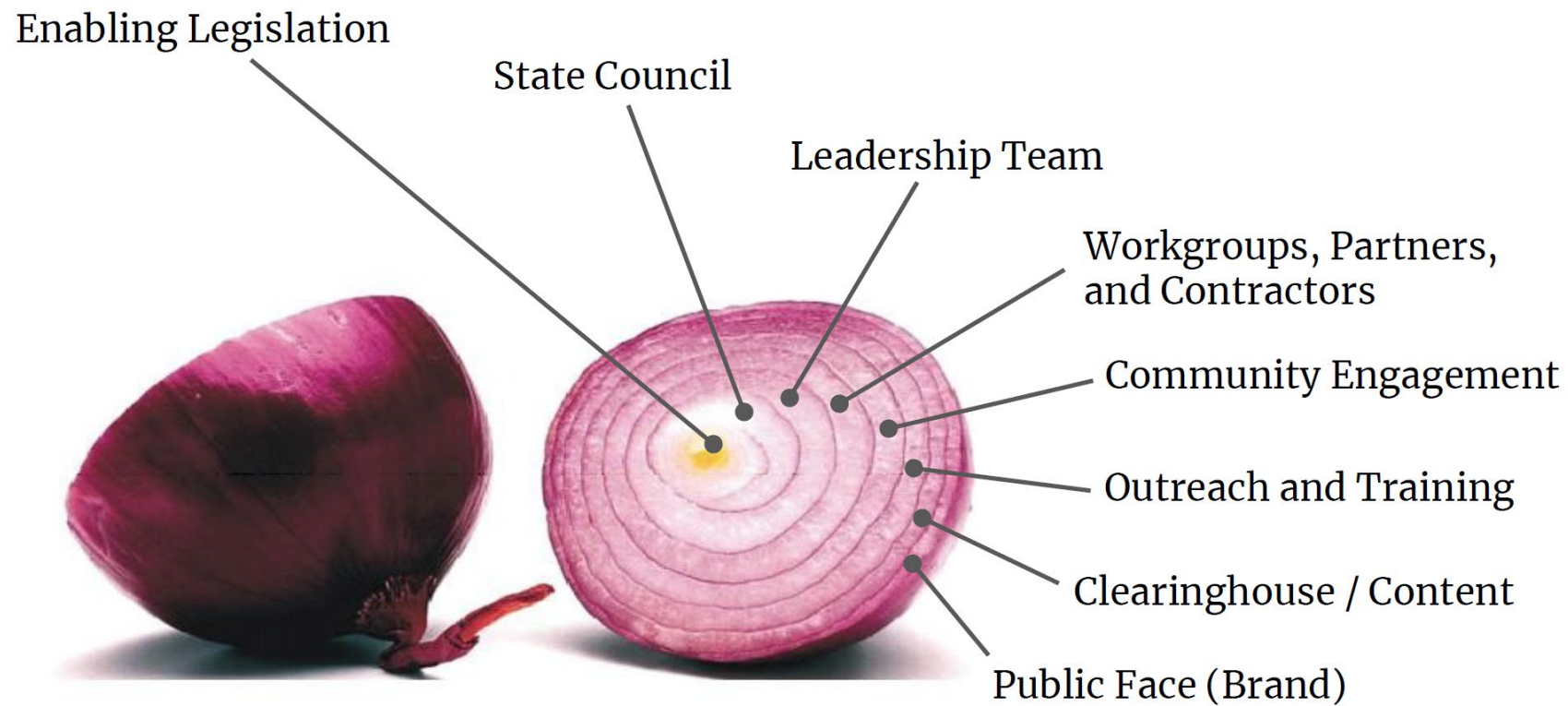
Leslie Jones, PhD

Geospatial Information Officer - State of Alaska

Executive Director - Alaska Geospatial Council

leslie.jones2@alaska.gov

State GIS Coordination Infrastructure





Alaska Geospatial Council Executive Board

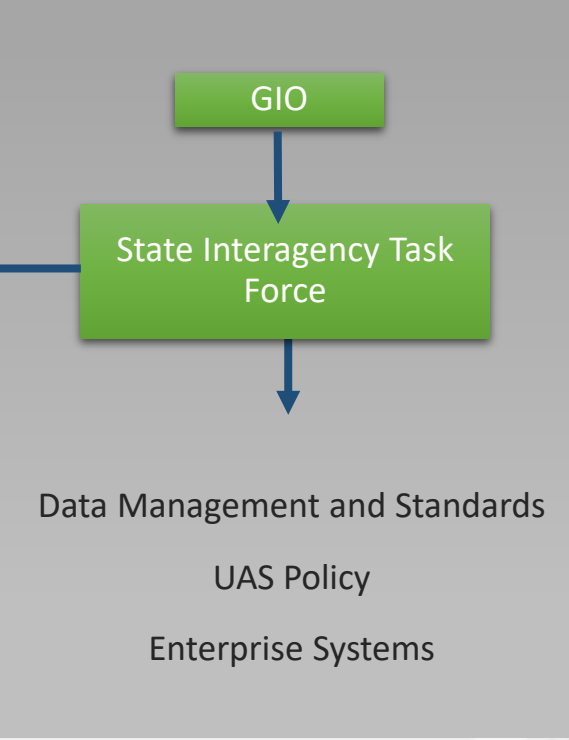
Technical
Advisory Group

Geospatial Initiatives

- Coastal Mapping
- Emergency Response
- Enterprise GIS

Framework Data
Implementation Team

- Transportation
- Addressing
- Imagery
- Elevation
- Cadastral
- Admin Boundaries
- Geodetic
- Wetlands
- Hydrography
- Vegetation



THE GREAT STATE OF ALASKA

State Employees Departments myAlaska

State of Alaska Open Data Geoportal

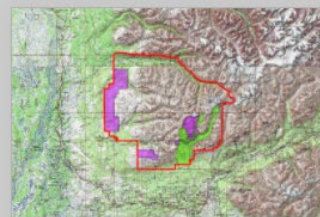
Home Organizations COVID-19 Information Get Involved Terms



Unleashing the Power of Data

Featured Maps and Apps

Local, State, and Federal organizations are creating new ways to visualize data. Explore some of the most popular maps and apps across Alaska.



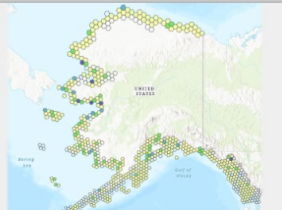
Hatcher Pass Motorized Management Areas

Explore motorized and non-motorized access areas of Hatcher Pass.



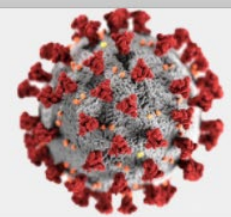
Where are National Wetlands Maps Used?

Examining the patterns of wetlands maps



Alaska Coastal Mapping Prioritization Survey

Results of the 2019 Coastal Mapping Prioritization Survey

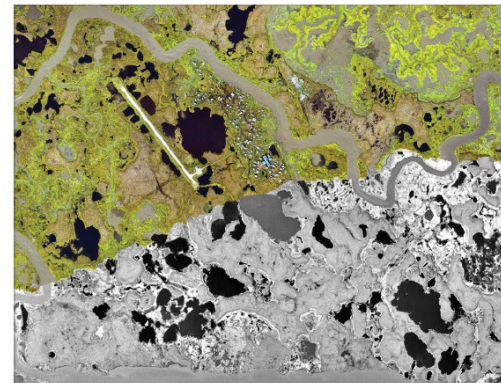


COVID-19 Information and Resources

Data related to health and economic impacts from borough, municipal, and state organizations

SHORELINE CHANGE AT ALASKA COASTAL COMMUNITIES

Jacquelyn R. Overbeck, Richard M. Buzard, Mark M. Turner, Katie Y. Miller, and Roberta J.T. Glenn

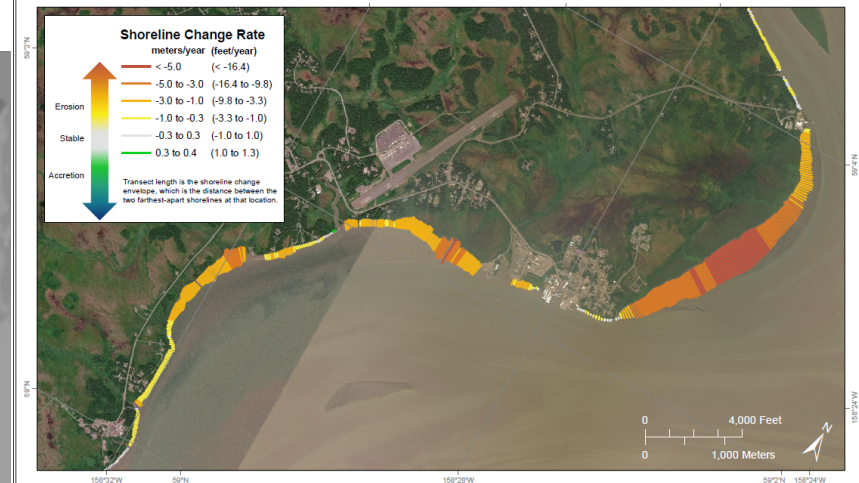


Converting paper maps to digital data



Shoreline Change (1952–2018) Dillingham, Alaska

REPORT OF INVESTIGATIONS 2020-10
Overbeck and others, 2020
DILLINGHAM
doi.org/10.14308/30552



STATE OF ALASKA DEPARTMENT OF NATURAL RESOURCES DIVISION OF GEOLOGICAL & GEOPHYSICAL SURVEYS

The State of Alaska makes no expressed or implied warranties, including warranties for merchantability and fitness, with respect to the character, functions or capabilities of the electronic data or products or their appropriateness for any user's purposes. In no event will the State of Alaska be liable for any incidental, special, consequential, or other damages suffered by the user or any other person or entity whether from the use of the electronic devices or products or any failure thereof or otherwise. In no event will the State of Alaska's liability to the Requestor or anyone else exceed the fee paid for the electronic service or product.

Shorelines represent the land-water interface. Shorelines were delineated from historical photographs collected between 1952 and 2018. Using the Digital Shoreline Analysis System (DSAS) developed by the U.S. Geological Survey, the measured distance between shorelines through time determines the linear rate of shoreline change at shore-perpendicular transects. The length of shoreline change envelope at each transect location indicates the distance between the nearest and farthest shorelines between 1952 and 2018. The shoreline change envelope is colored by the shoreline change rate (meters/year and feet/year), with hot colors representing erosion and cool colors representing accretion. Linear rates of shoreline change are simplified and do not accurately reflect shoreline erosion and accretion at all locations.

This work is part of the Coastal Infrastructure Erosion Vulnerability Assessment project funded by the Denali Commission Environmentally Threatened Communities Grant Program. Data used to conduct the analysis were paid for by the State of Alaska and the Federal Emergency Management Agency in the 2018 update to the Alaska State Hazard Mitigation Plan.

Link to Report <https://dggis.alaska.gov/pubs/id/30552>



SE Alaska Disaster declaration - Haines Borough landslide

Native Village of Shishmaref: 30-80 feet of erosion along 5,000 feet of shoreline fronting the community airport facilities and undermining the road to the landfill.





ALASKA GEOSPATIAL COUNCIL

AGC HOME

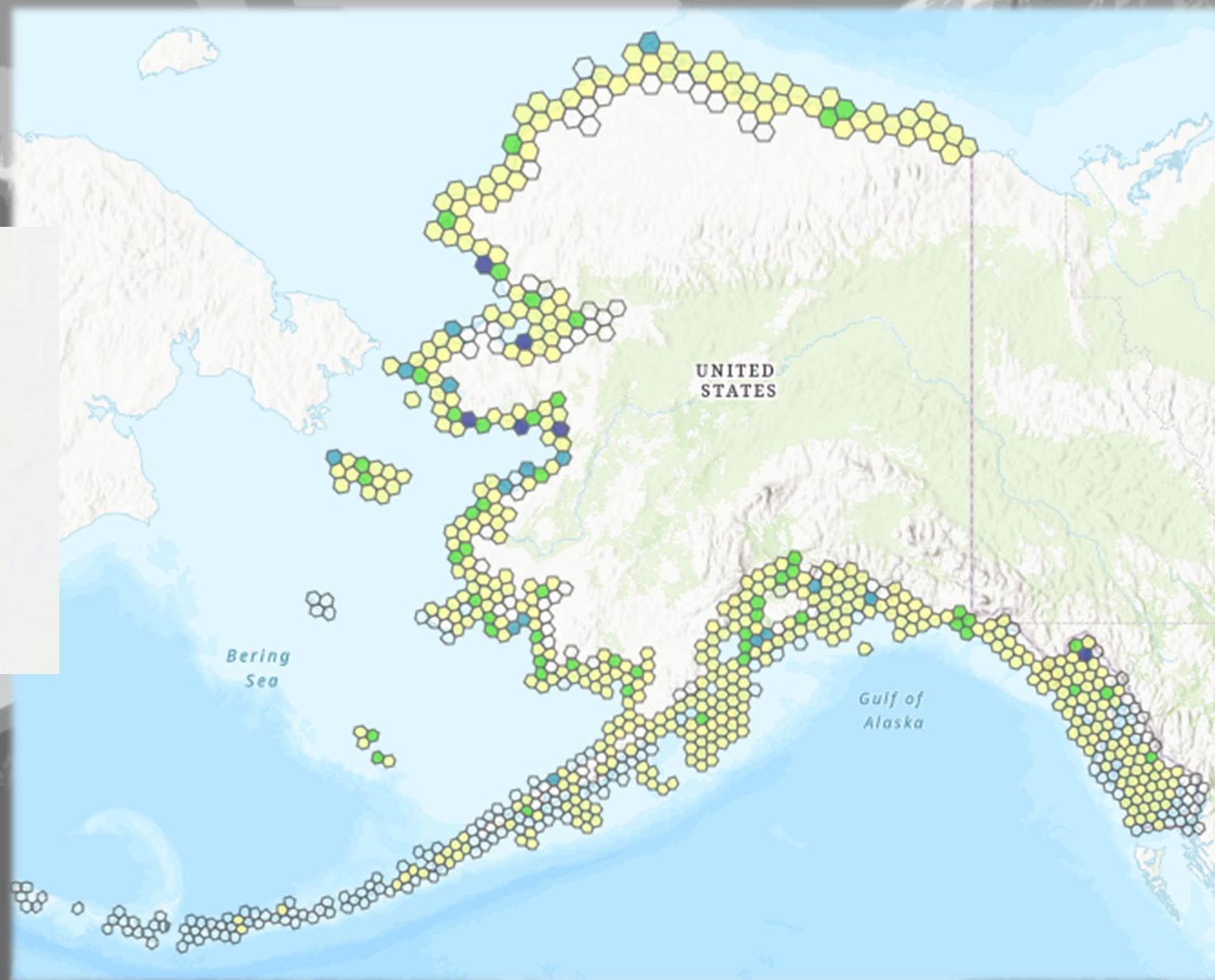
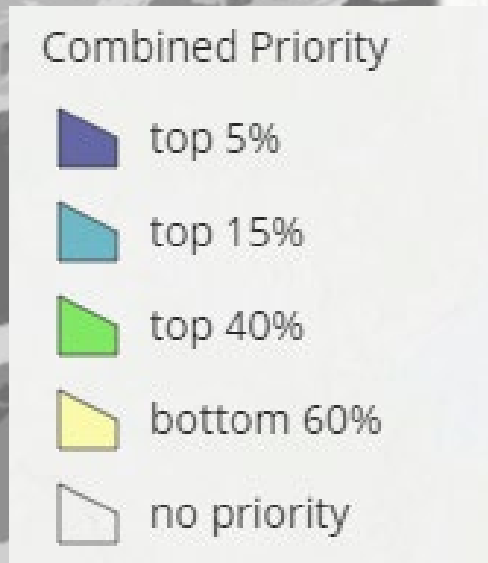
You are here: [Home](#) / Coastal Mapping Initiative

Coastal Mapping Initiative

The Coastal Mapping Initiative aims to improve quality and coverage of coastal mapping data to support decision-making for all Alaska stakeholders.

<http://agc.dnr.alaska.gov/coastal.html>

2019 Alaska Coastal Mapping Prioritization Survey Results



State Geospatial Coordination | Contact Information

State of Alaska
Geospatial Information Officer

Leslie
Jones

907-269-5710
leslie.jones2@alaska.gov

Coastal Mapping Initiative
Co-chair

Jacquelyn
Overbeck

907-451-5026
jacquelyn.overbeck@alaska.gov

Coastal Mapping Initiative
Co-chair

Hadley
Owen

907-231-7112
alaska.navmanager@noaa.gov