



NATIONAL PARK SERVICE COASTAL MAPPING UPDATE

TAHZAY JONES

ALASKA REGION

OCEAN AND COASTAL PROGRAMS COORDINATOR

NATIONAL PARK SERVICE

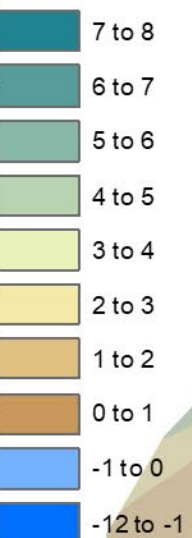
TAHZAY_JONES@NPS.GOV

907-644-3442



We contract out Lidar collections
We collect RGB and NIR imagery

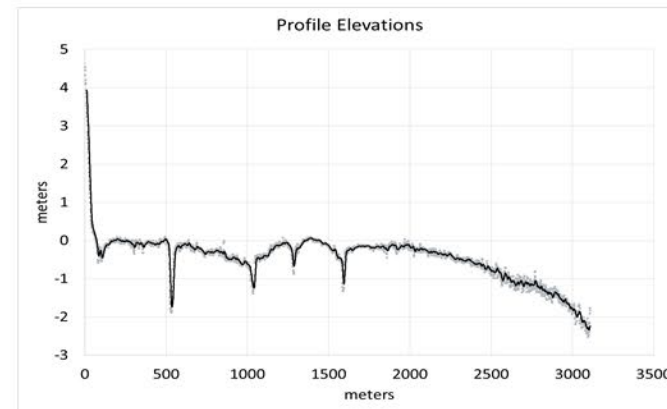
Elevation (m)



5

Kilometers

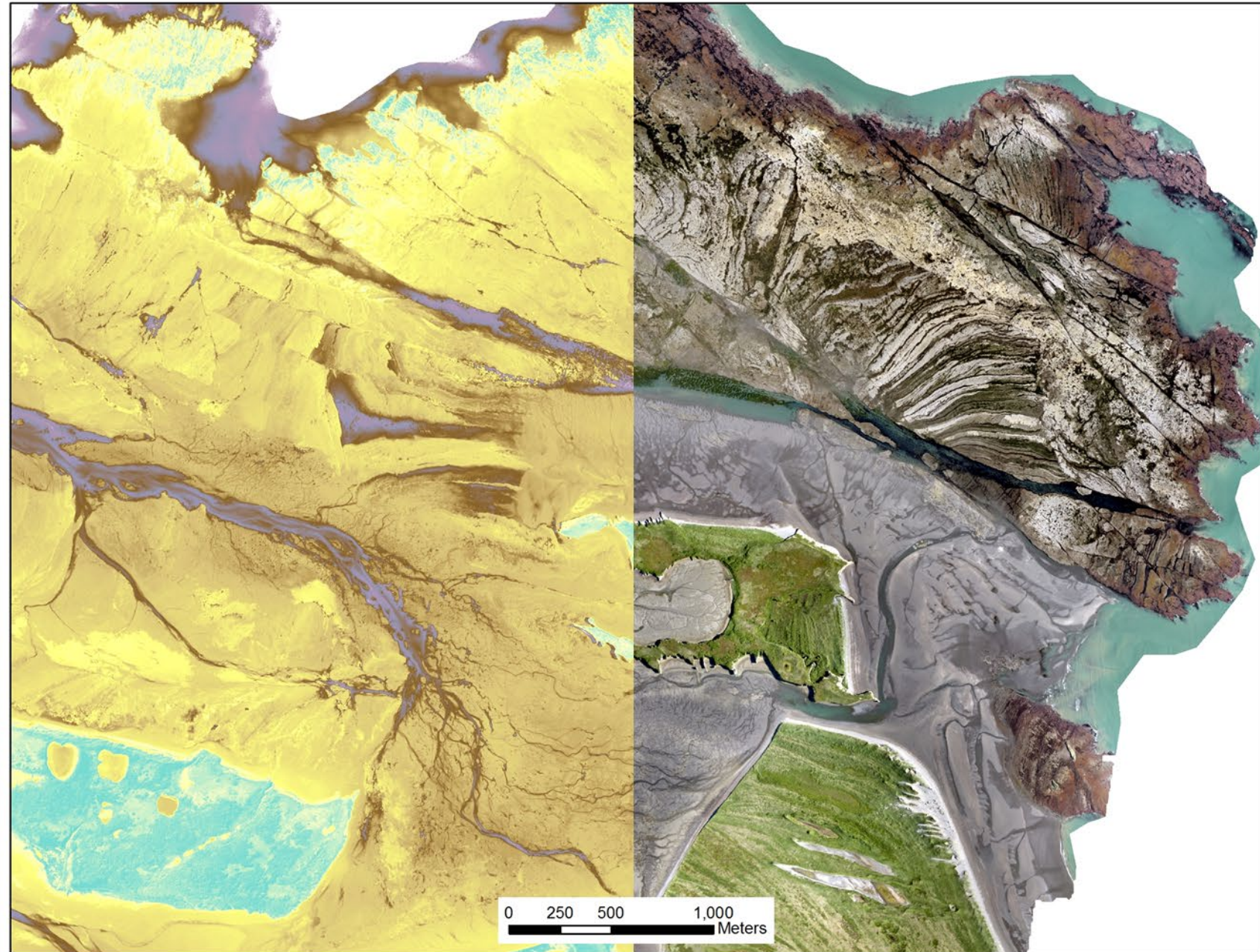
We process RGB for
elevation data (SfM)

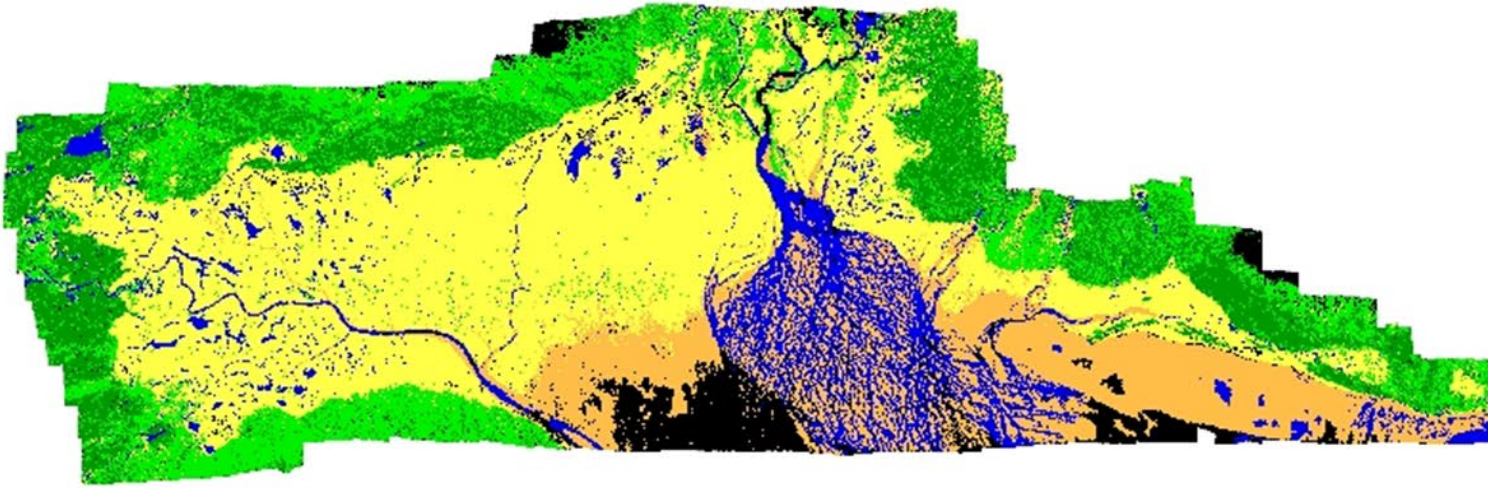




We process RGB
and NIR for NDVI
data for habitat
mapping

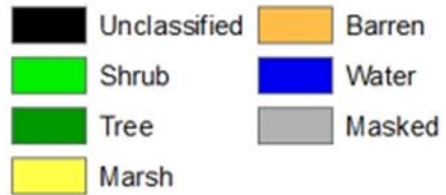
DOUGLAS REEF
KATMAI

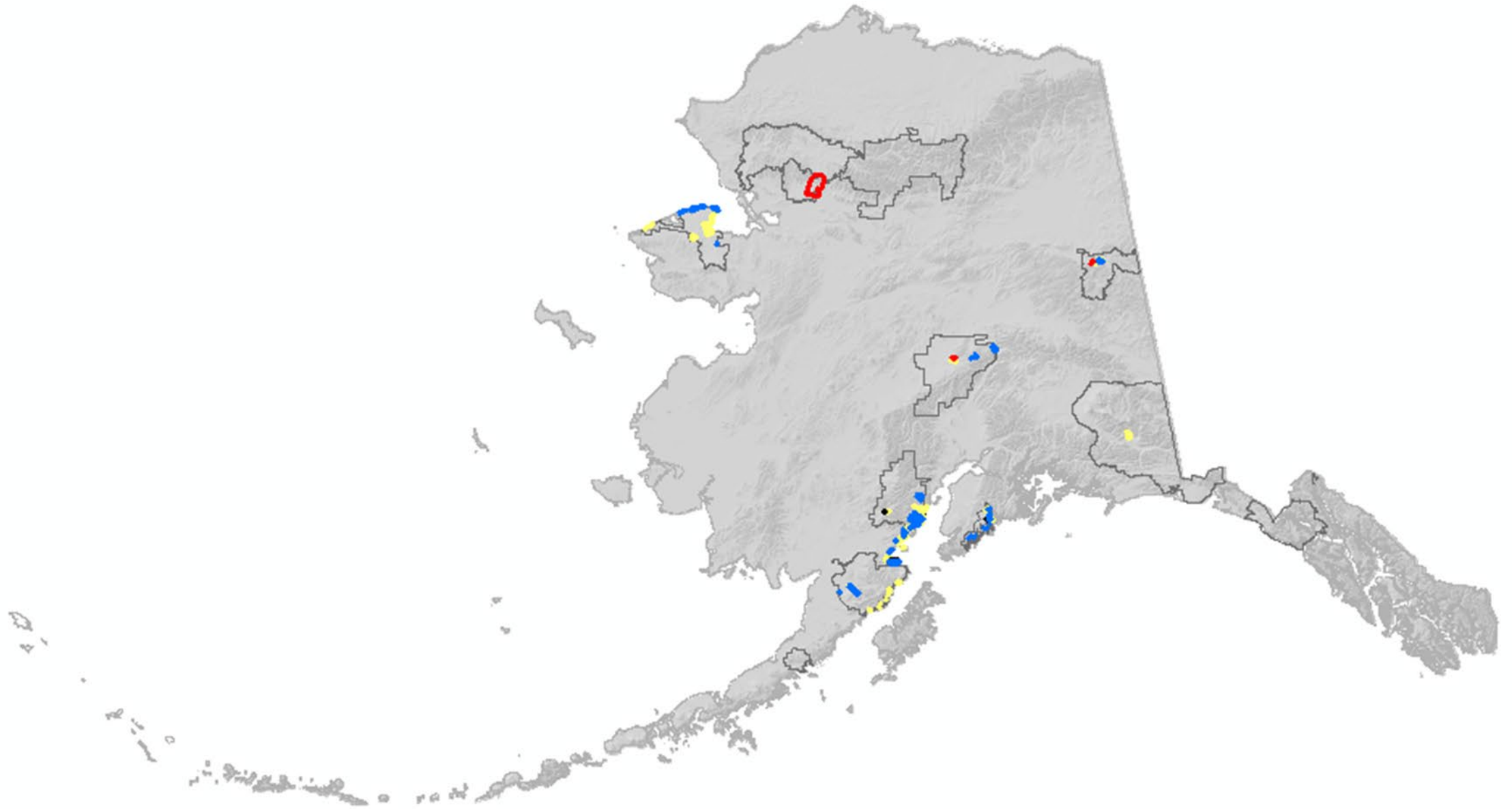


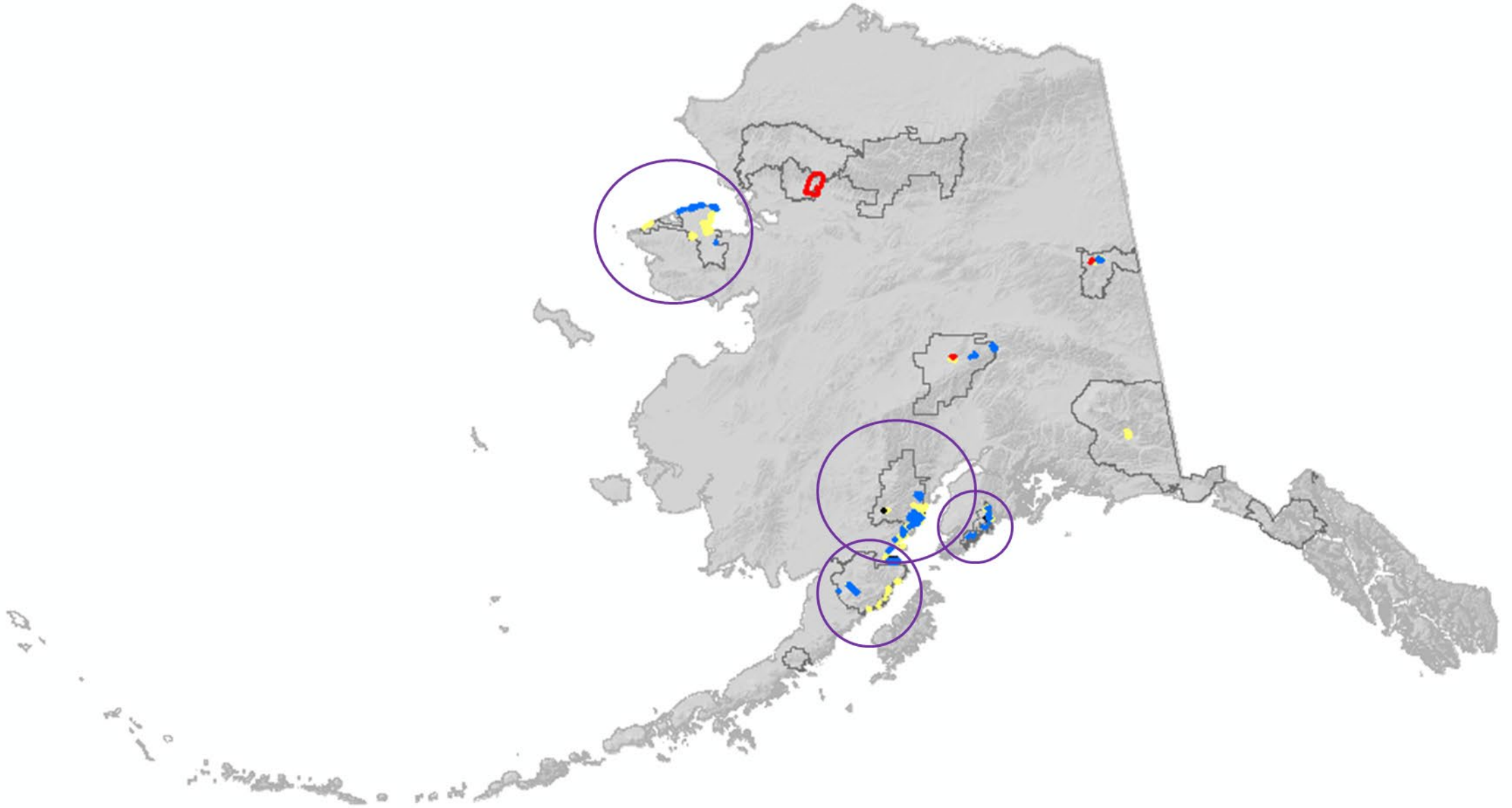


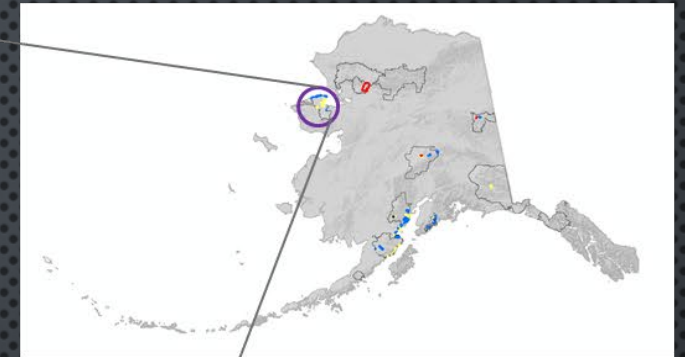
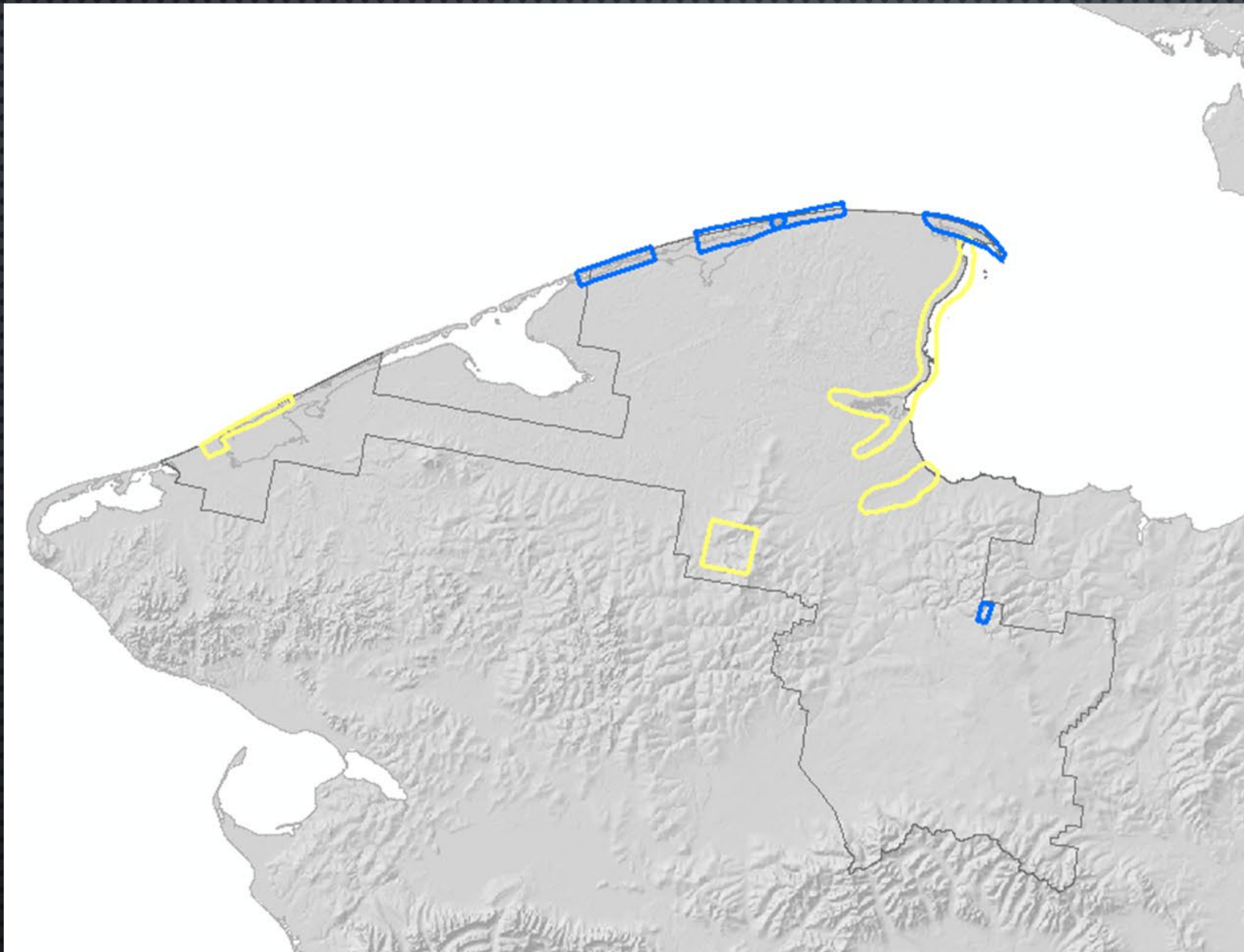
Habitat Mapping is focused on sensitive and vulnerable habitats

Many smaller targeted acquisitions



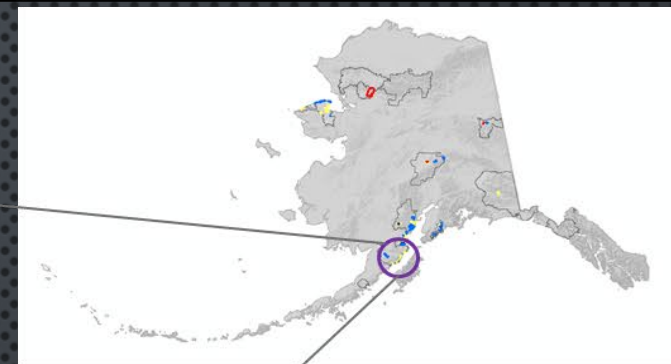
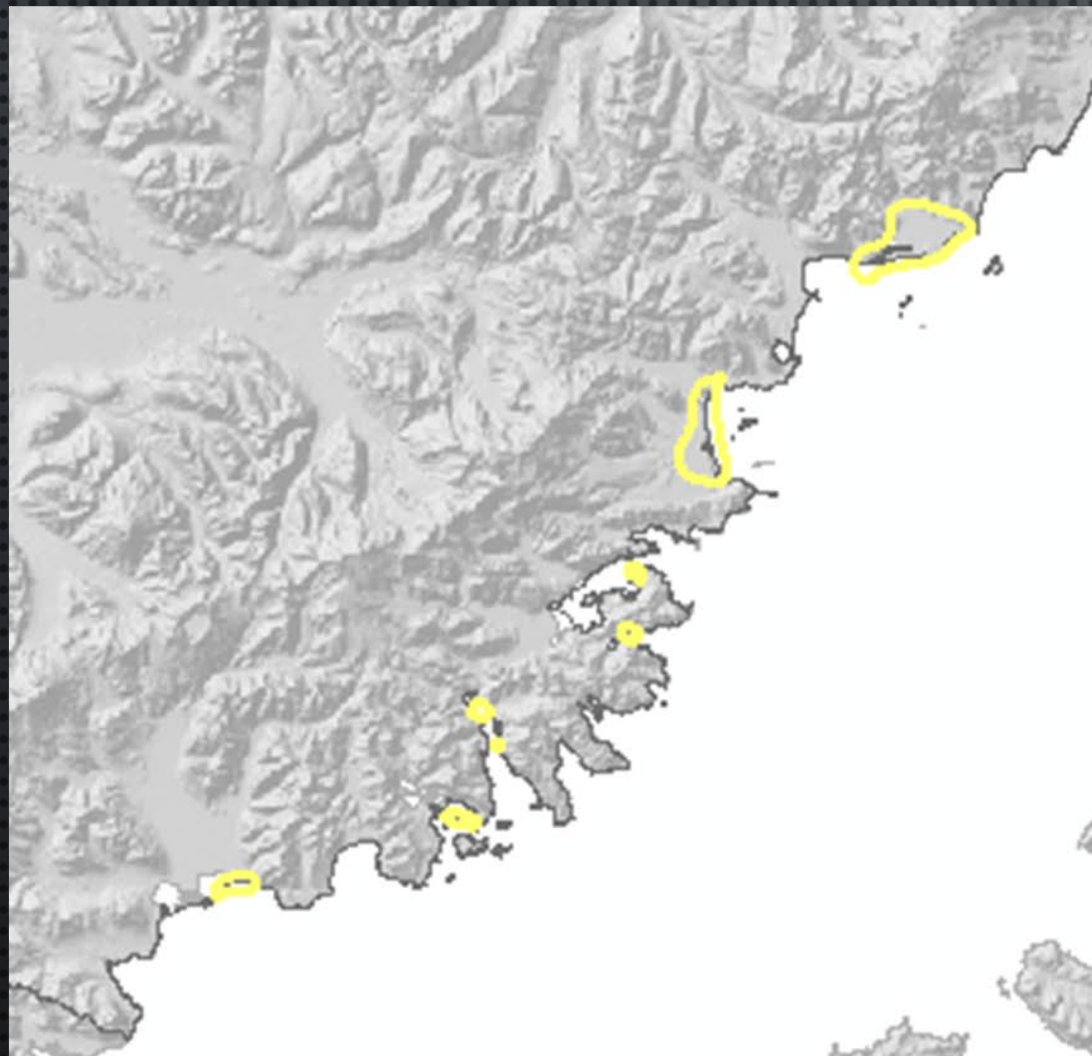






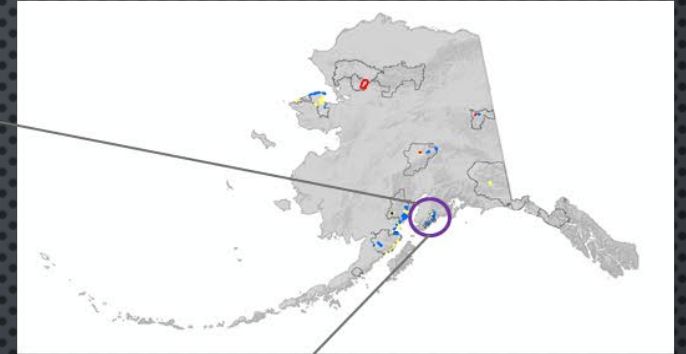
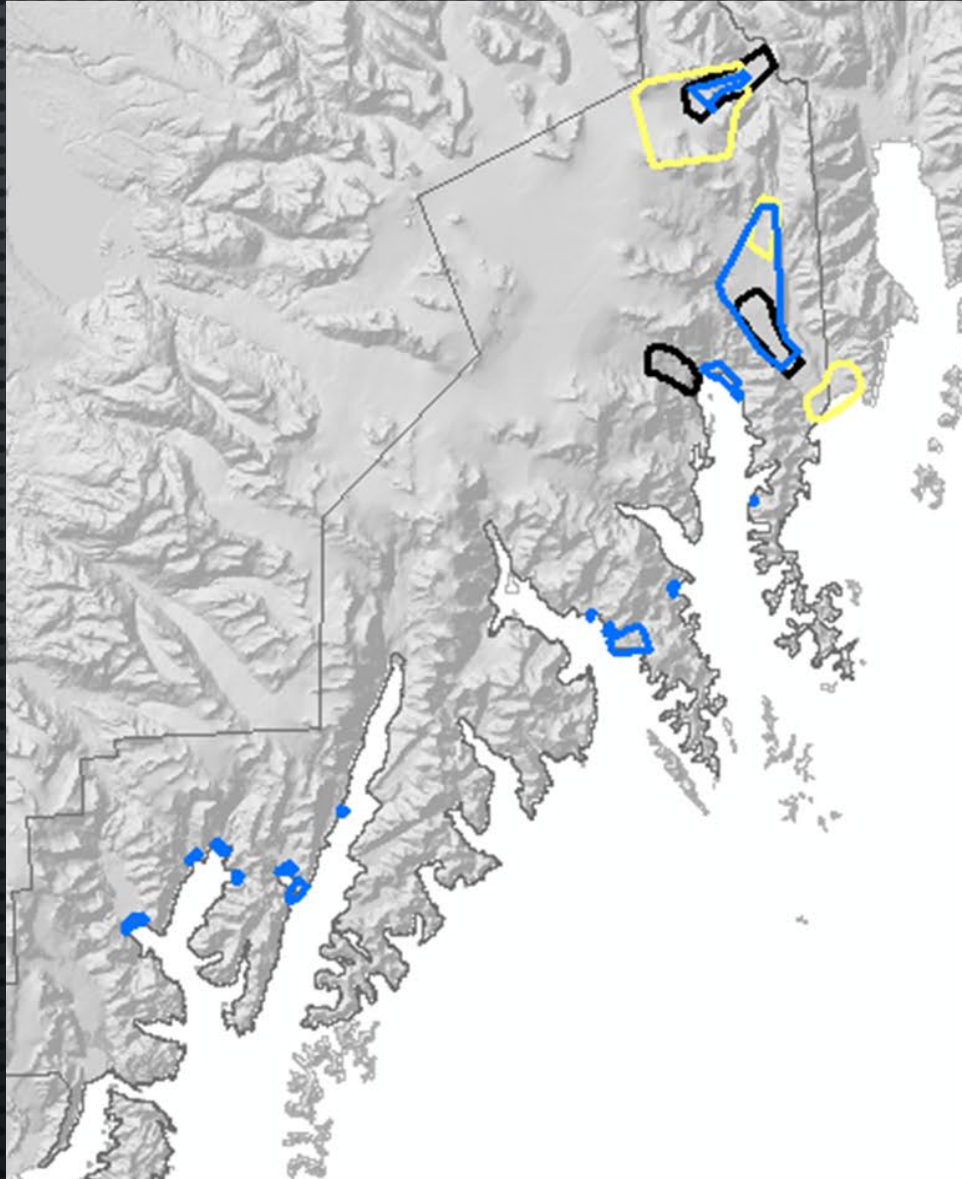
2018
2019

SfM Acquisition – Bering Land Bridge



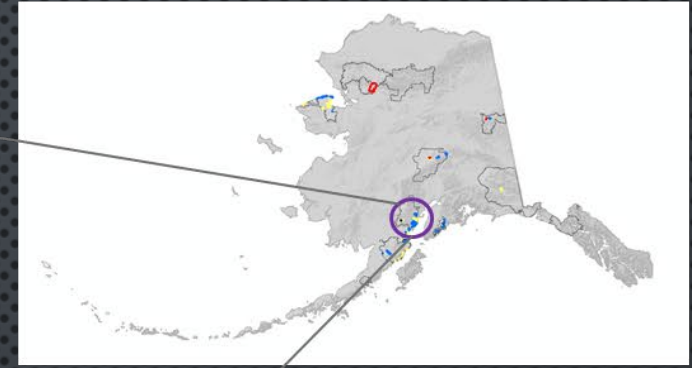
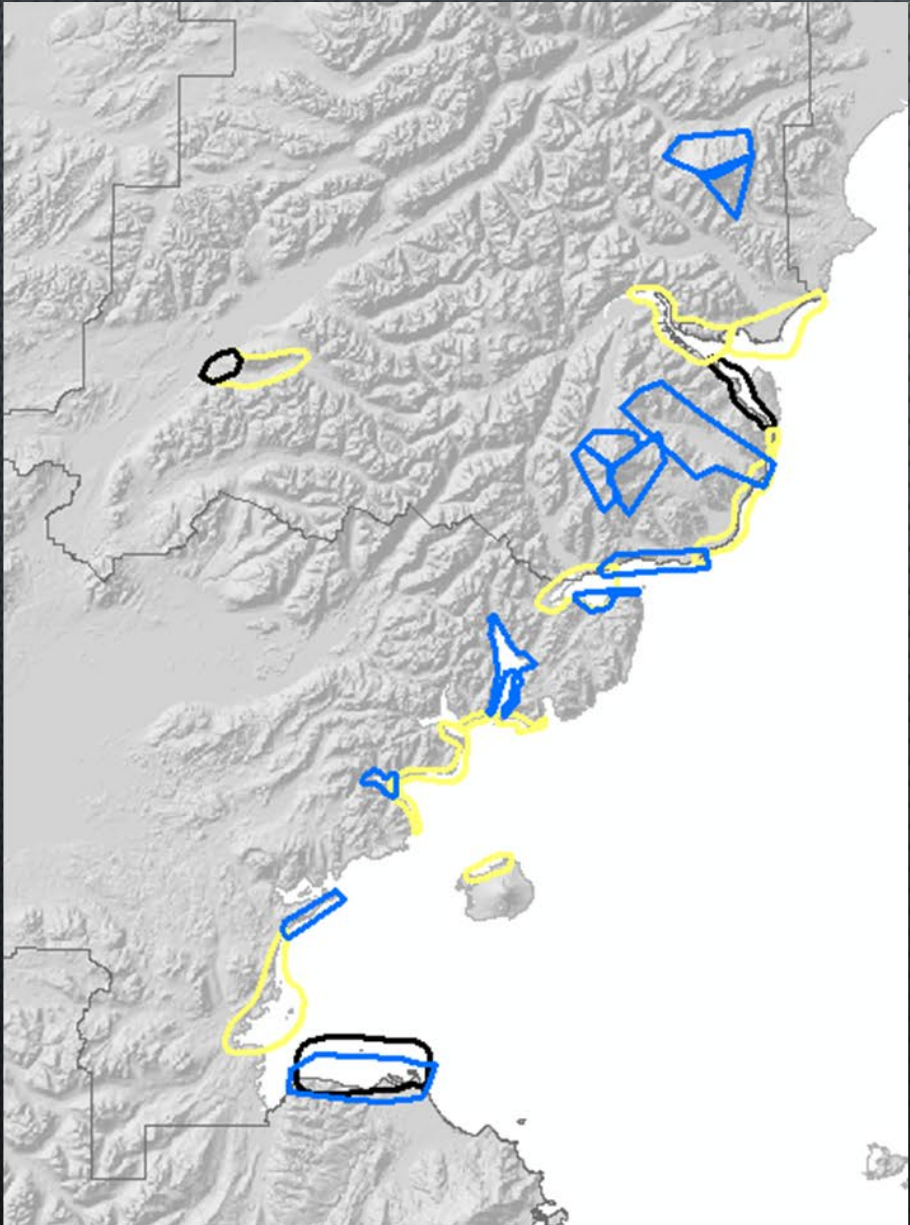
2018
2019

SfM Acquisition – Katmai National Park



2017
2018
2019

SfM Acquisition – Kenai Fjords National Park

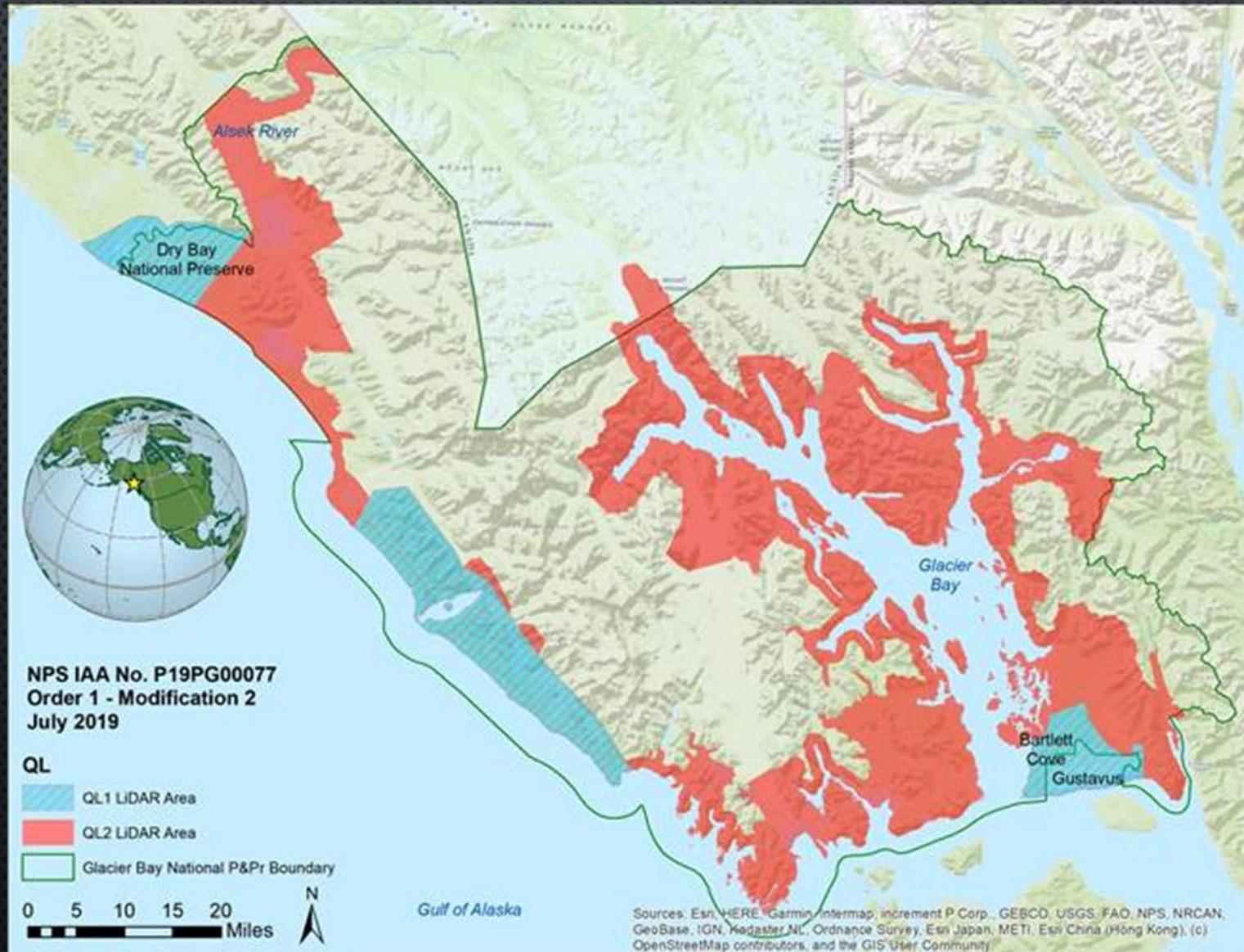


2017
2018
2019

SfM Acquisition – Lake Clark National Park



Lidar Acquisition – Glacier Bay - 2019



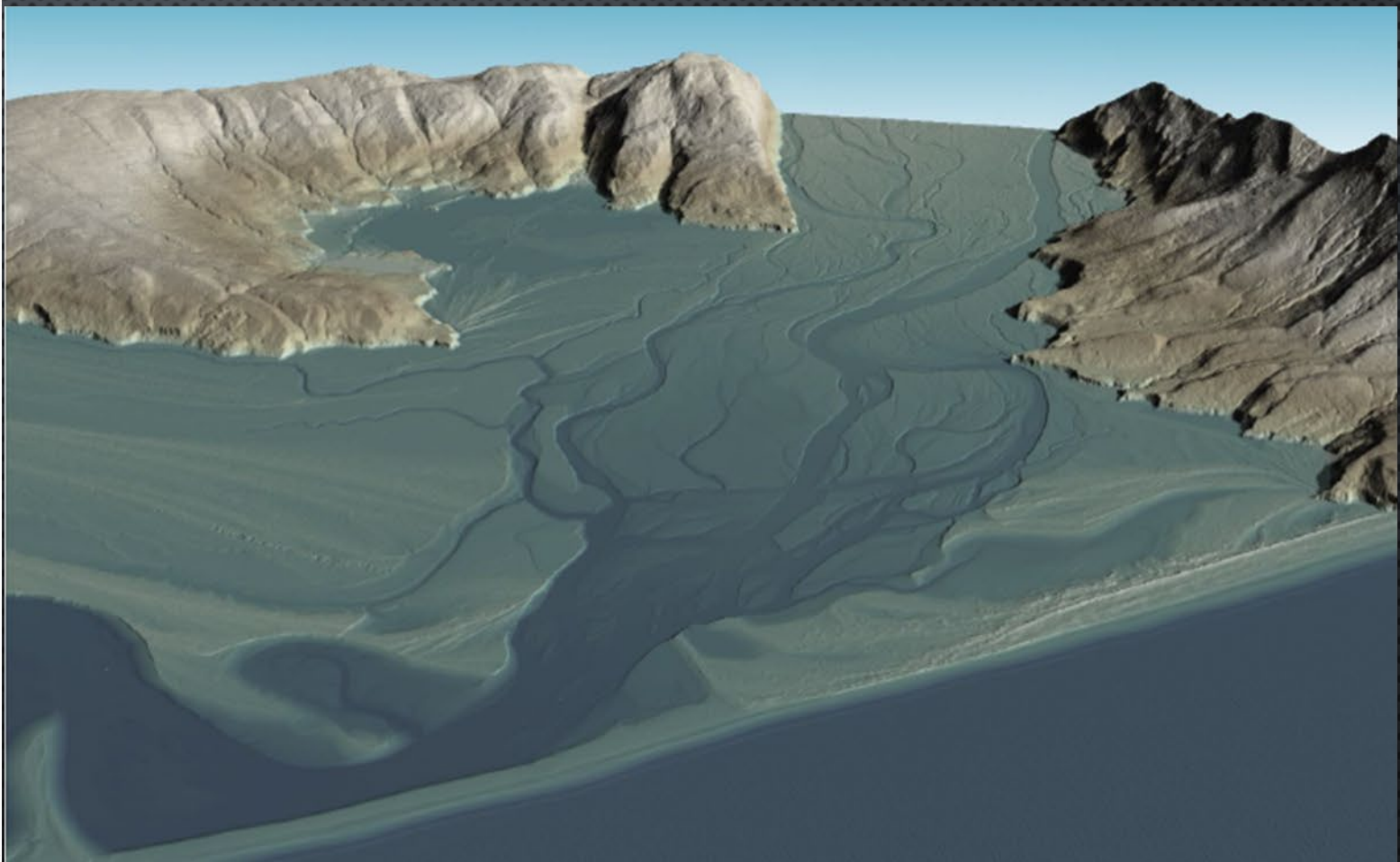
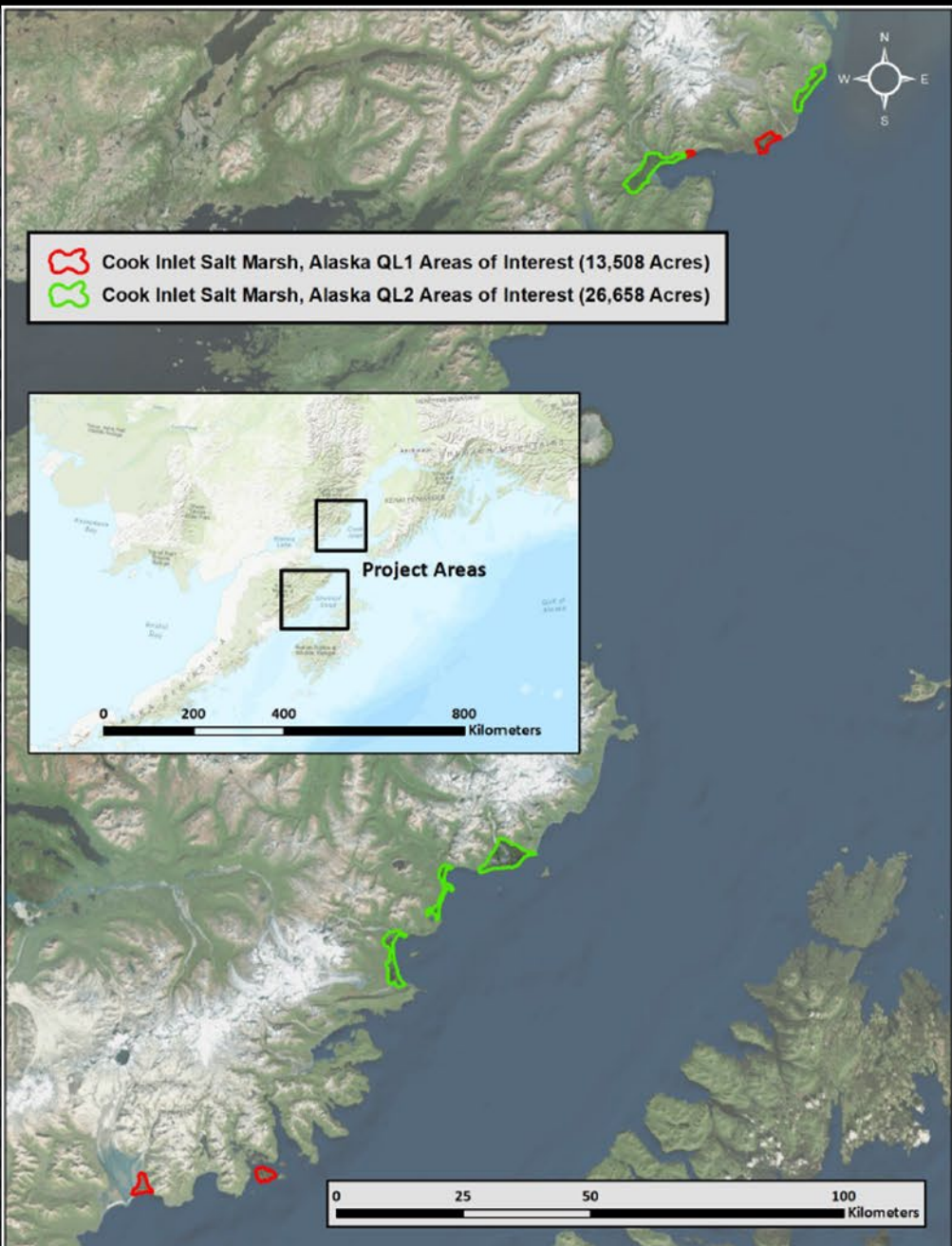
Topobathy
Lituya Bay to Icy Point



Targeted Lidar Acquisitions - 2018

Lake Clark National Park

Katmai National Park





THANK YOU

QUESTIONS?

TAHZAY JONES

ALASKA REGION

OCEAN AND COASTAL PROGRAMS COORDINATOR

NATIONAL PARK SERVICE

TAHZAY_JONES@NPS.GOV