



# **Statewide National Wetlands Inventory**

**An overview of the NWI and the Alaska Wetlands  
Technical Working Group**

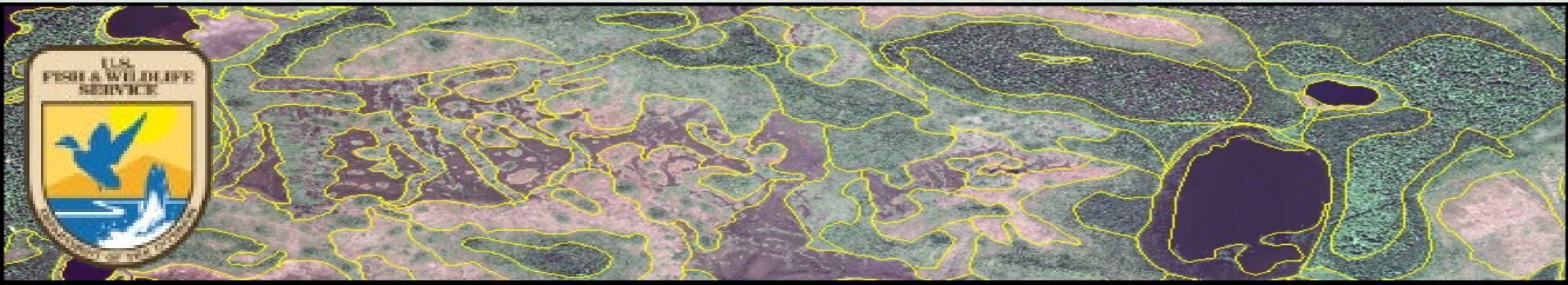
**Sydney Thielke, U.S. FWS Regional Wetlands Coordinator**

**November 14, 2022**

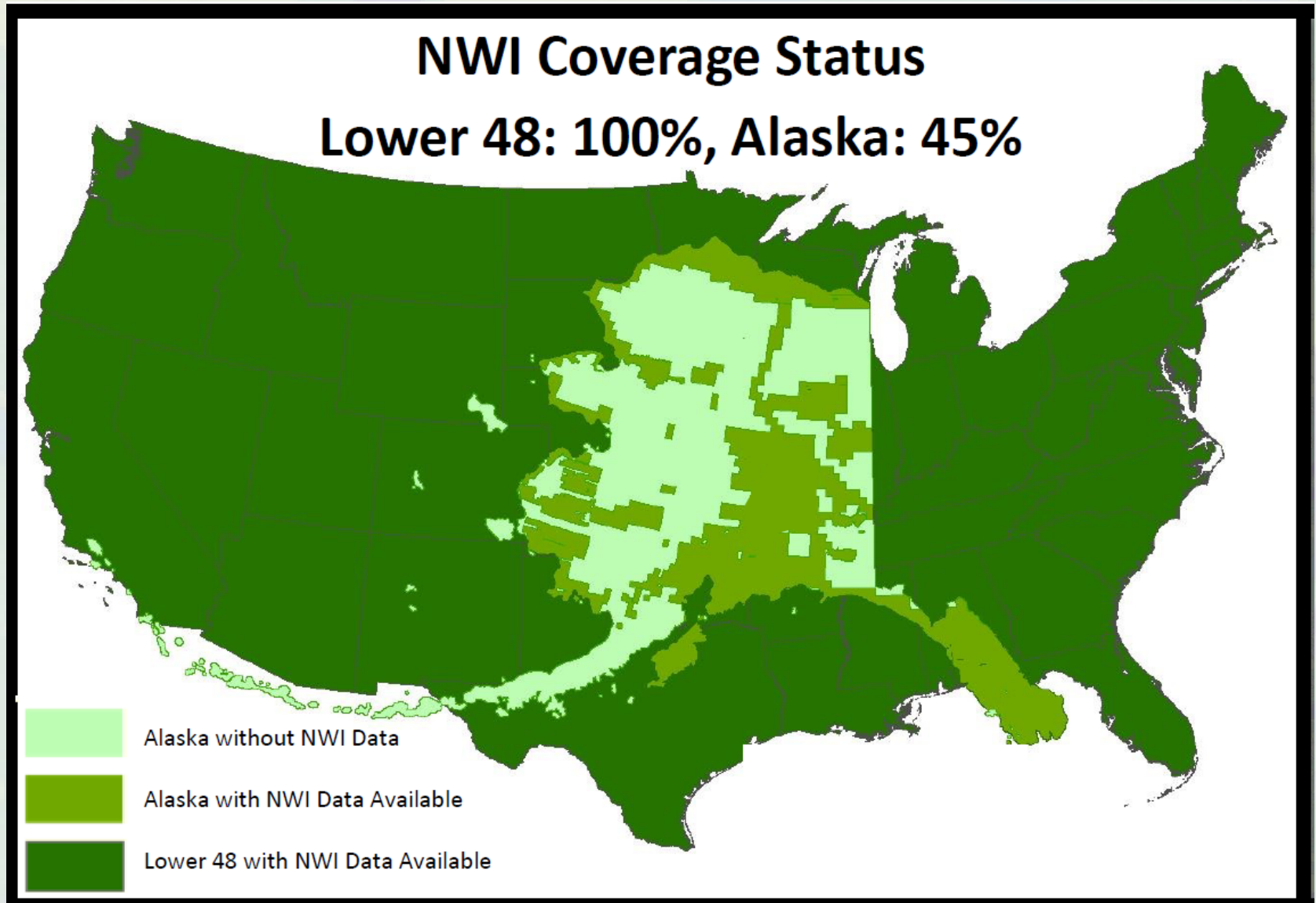
# The National Wetlands Inventory Program

U.S. FWS is the federal agency tasked with providing data to the public the **location and type of wetlands** and deepwater habitats

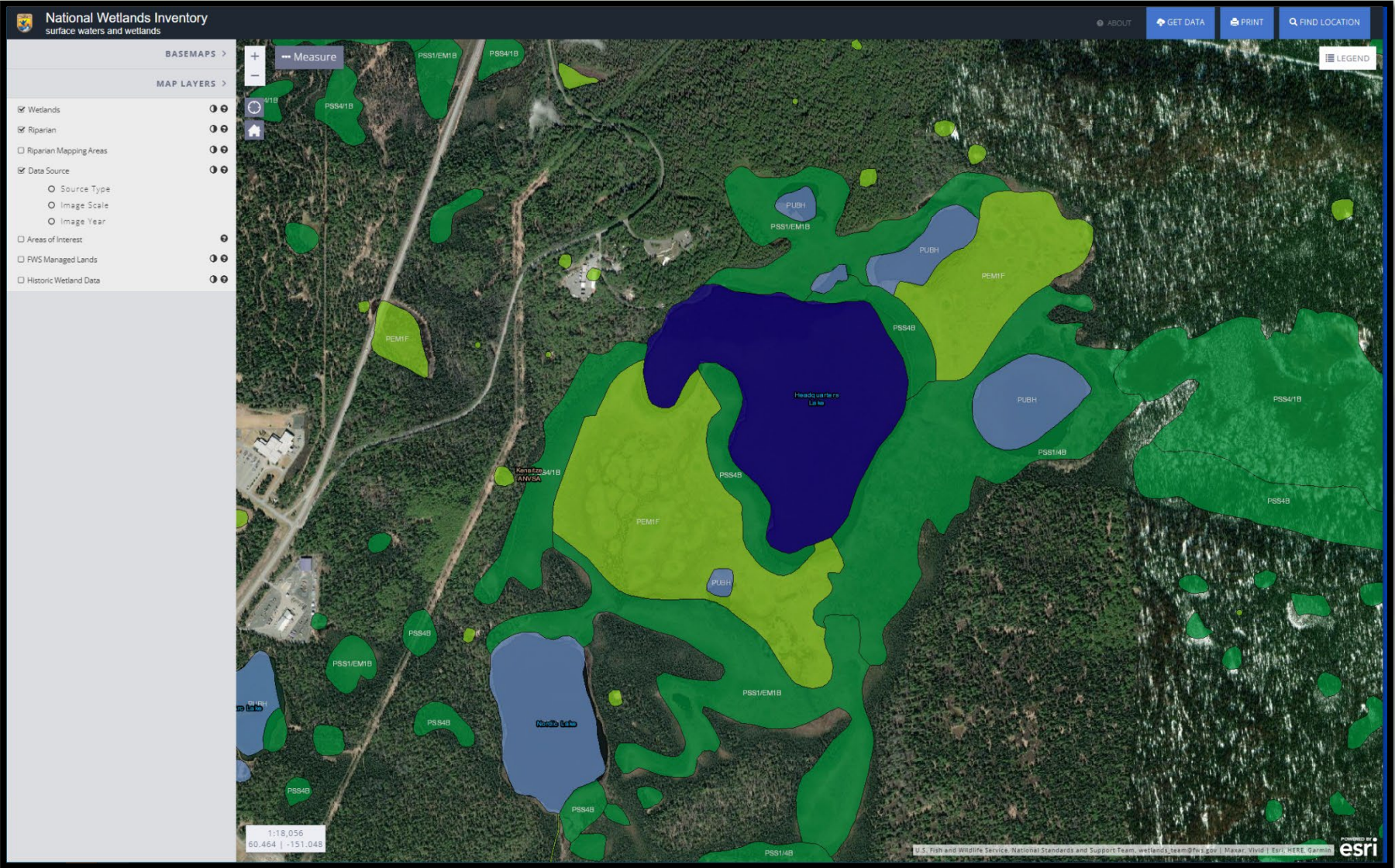
- Wetlands Geospatial Dataset considered a National Geospatial Data Asset (NGDA)
- Federally funded wetland mapping must meet Federal Geographic Data Committee (FGDC) Wetland Mapping and Classification Standards



# The NWI Data Layer Coverage



# NWI Data Access



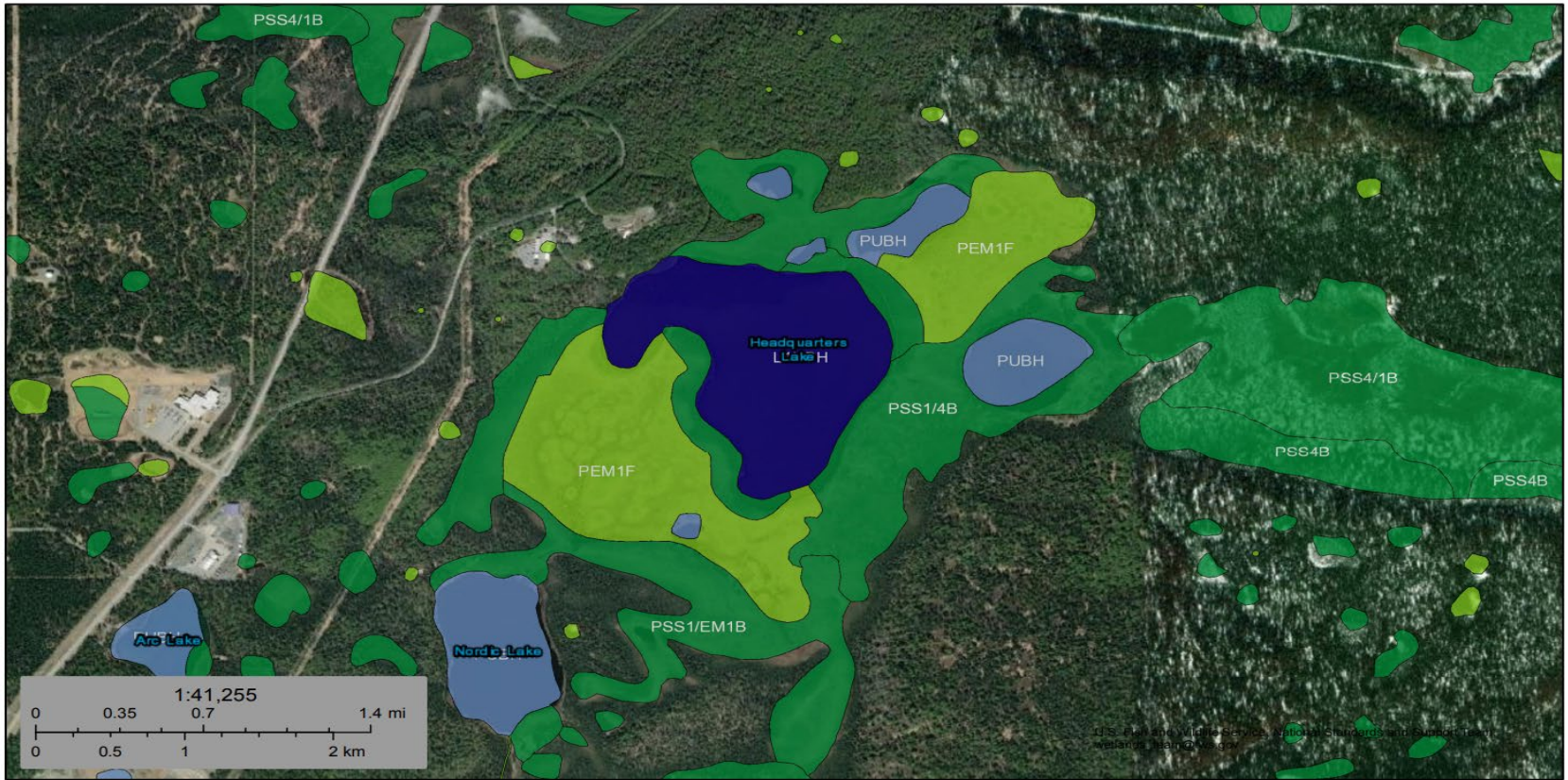
\* Web Mapper Interface \*Download Maps or Data \*Web Services\*

# NWI Data Access



U.S. Fish and Wildlife Service  
National Wetlands Inventory

Data Mgmt Demonstration



October 17, 2022

**Wetlands**

- |                                |                                   |          |
|--------------------------------|-----------------------------------|----------|
| Estuarine and Marine Deepwater | Freshwater Emergent Wetland       | Lake     |
| Estuarine and Marine Wetland   | Freshwater Forested/Shrub Wetland | Other    |
|                                | Freshwater Pond                   | Riverine |

This map is for general reference only. The US Fish and Wildlife Service is not responsible for the accuracy or currentness of the base data shown on this map. All wetlands related data should be used in accordance with the layer metadata found on the Wetlands Mapper web site.

National Wetlands Inventory (NWI)  
This page was produced by the NWI mapper

\* Web Mapper Interface \* Download Maps or Data \* Web Services \*

# NWI Data Access

 App

**FWS HQ ES National Wetlands Inventory - Wetlands Mapper** 

U.S. Fish & Wildlife Service | jane\_harner@fws.gov\_fws

The **Wetlands** mapper is designed to deliver easy-to-use, map like views of America's Wetland resources. It integrates digital map data along with other resource information to produce current...

**Type:** Web Mapping Application

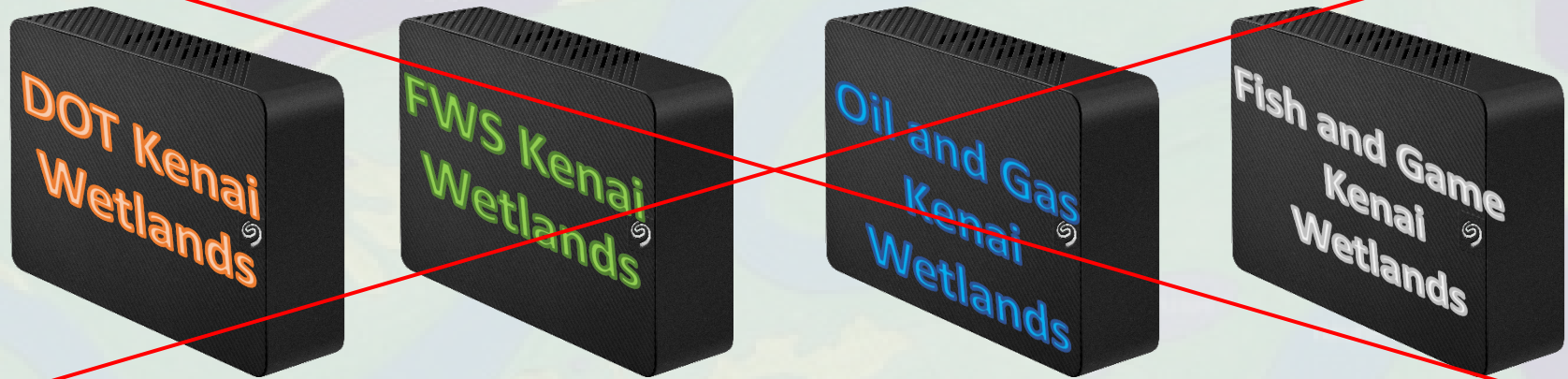
**Uploaded:** October 19, 2021

**Tags:** Wetlands, Federal, National, Fish and Wildlife Service,...

\* Web Mapper Interface \*Download Maps or Data \*Web Services\*

# NWI Value

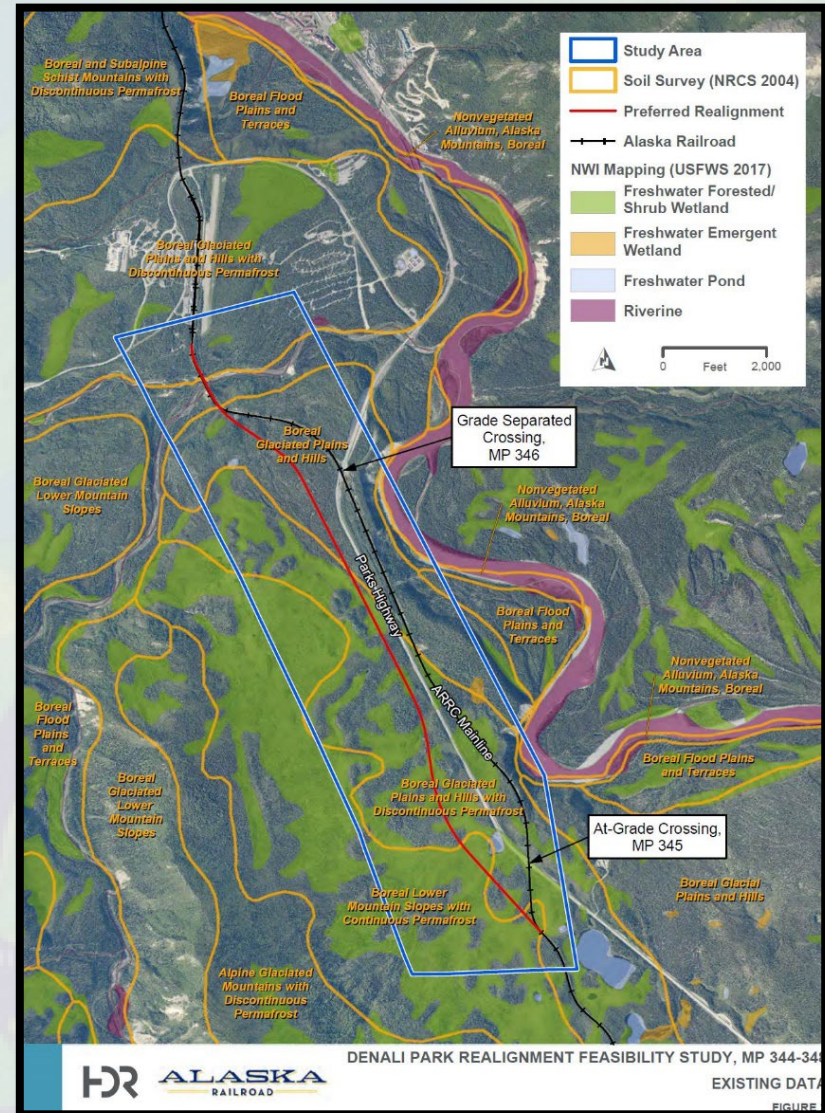
- Where NWI exists, the public and private sectors are able to **reduce duplication of effort** for wetland inventories and analysis



- NWI is relied on by government, NGOs, academia, and the public
  - Nearly **one million website** views annually
  - Over **525,000 annual mapper** views
  - Over **40,000 data downloads** annually
  - About **260,000 online maps** printed in 2021
  - Minnesota and Michigan estimate **NWI saves over \$750K** annually
  - USACE (nationally) indicate savings of **\$8M** annually

# NWI Applications

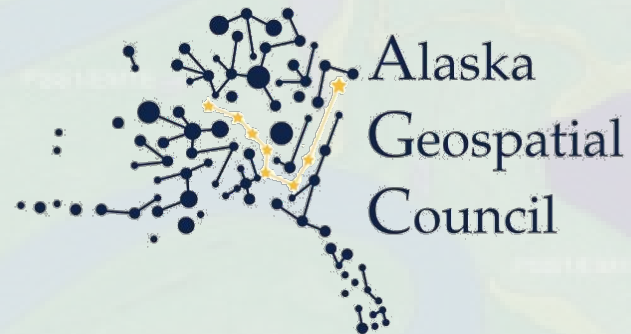
- Relied on for work by governments, NGOs, academia, and the public, including private industries and utilities
- Supporting role in permitting
- Habitat analysis
- Climate change forecasting
- Infrastructure implementation
- Resource prioritization
- National Environmental Protection Act (NEPA)





# Alaska Wetlands Technical Working Group

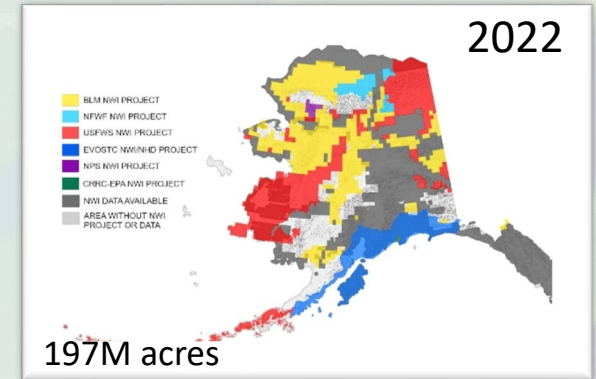
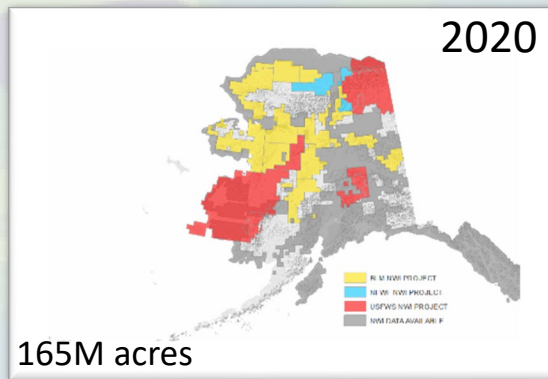
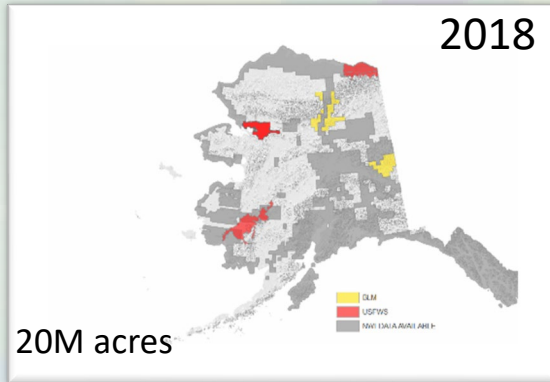
*Mapping the critical transition areas  
between uplands and lowlands;  
where green meets blue.*



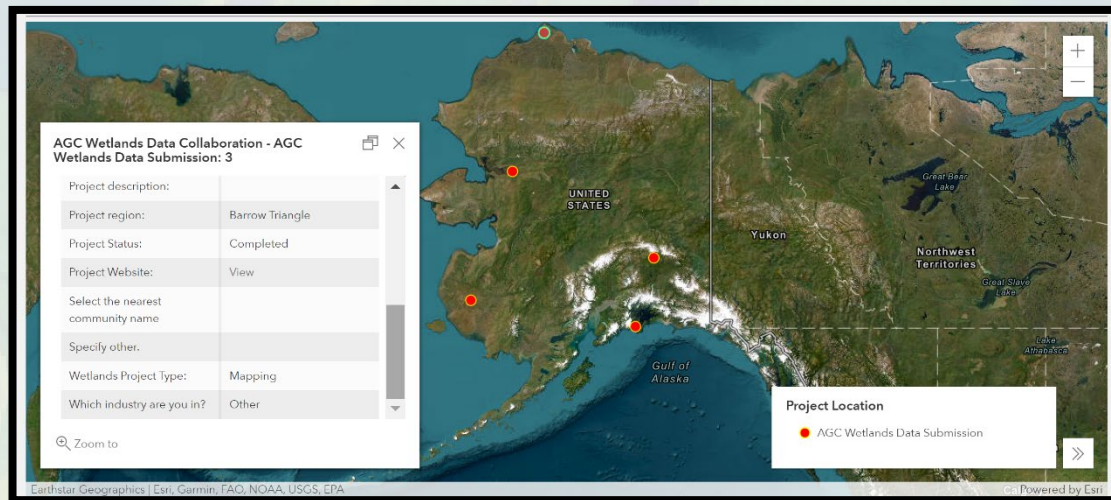
- Co-Chairs
  - Sydney Thielke, U.S. Fish and Wildlife Service
  - Rob Clark, Alaska Department of Environmental Conservation (ADEC)
- Membership
  - Federal, state and local government
  - NWI data producers, academia, NGOs

# AWTWG Successes

## 2019 Strategic plan and support for statewide NWI Coverage by 2029



Projects Tracker - Bringing together wetland inventory and science efforts across the variety of wetland applications



# AWTWG Future

- **Expand** the relevancy of projects tracker
- **Seek out** public wetlands data
- **Develop** a distribution portal for wetlands data
- **Support** the geospatial needs of the Alaska wetland community



A map of a wetland area, likely a river delta or floodplain. The map features a prominent winding river in shades of blue and green. The surrounding land is divided into various colored regions, including green, yellow, and purple, which likely represent different types of wetlands or vegetation. The text "Thank you" is overlaid in large, bold, black letters at the top of the image.

# Thank you

**Sydney Thielke, Regional Wetlands Coordinator**

**[Sydney\\_thielke@fws.gov](mailto:Sydney_thielke@fws.gov)**