



Alaska Coastal Mapping Strategy Update

Hillary Palmer - Dewberry

.....
11.15.2022 | AGC GIS Day Celebration

Supporting Governance Structures



Alaska Mapping Executive Committee

- Dept of Interior
- Dept of Commerce

State of Alaska, USGS, USFS, USCG, USACE, Senate, OMB, NRO, NRCS, NPS, NOAA, NGA, FAA, EPA, DOT, DOI, DOD, BOEM, BLM, BIA, DHS, Census, FEMA, USFWS, DOE



Alaska Geospatial Council

- Dr. Leslie Jones, GIO
- Alaska DNR Commissioner
- Dept of Interior
- Dept of Commerce

Local Govt, State Govt, Federal Govt, Private Industry, Academia, Tribal, Public

AGC Coastal & Ocean TWG

Tracked Initiatives:

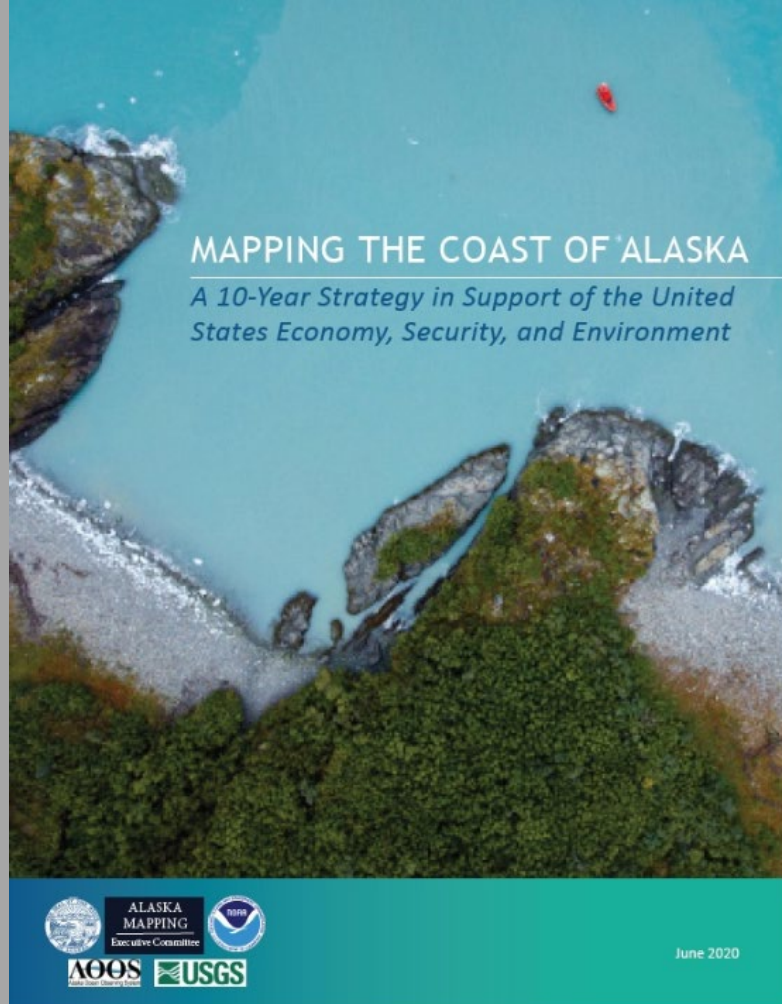
- Alaska Coastal Mapping Strategy
- Seascape Alaska
- Alaska DGGS Coastal Hazards Program
- USACE National Shoreline Management Study
- Alaska Regional Coastal Resilience Assessment
- Alaska Water Level Watch

Working Group Goals:

- Coordination
- Data Sharing
- Outreach

A Coastal Mapping Strategy for Alaska is Born!

- Imagery
- Elevation
- Shoreline Delineation
- Supporting Positional Control Framework



Alaska Coastal Mapping Strategy Tools



Mapping Plan of Action

Synthesis of Prioritization Survey Results
+ Community Mapping Areas (equity).
Map most needed places first..

Prioritization Survey Results

What areas are important?
What map products are
needed? How soon?

Acquisition Tracker

What data already exists?
Who's planning to collect new data?
Where? When?

Mapping Partner Finder Tool

Who else is interested in
my area? Maybe we can
share mapping costs!

What's the Current Status?

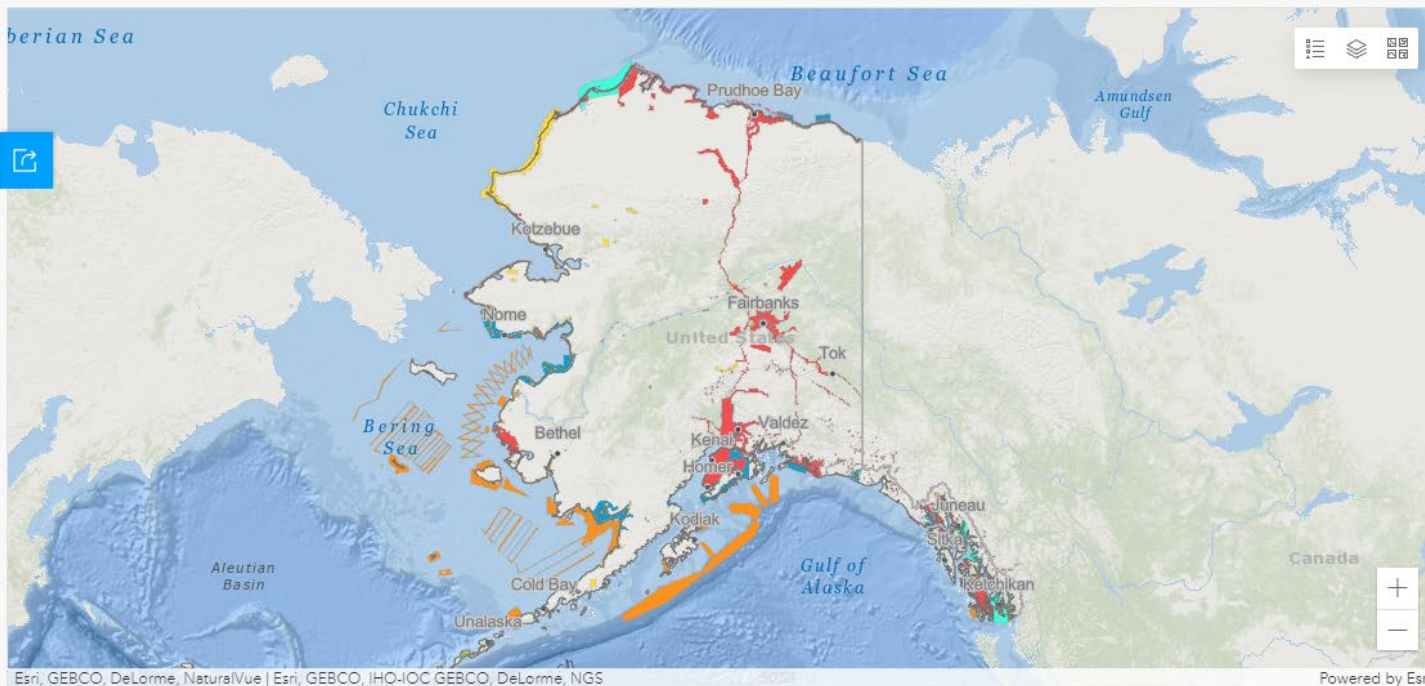
- What data have been captured?
- When?
- At what resolution?
- Who sponsored it?



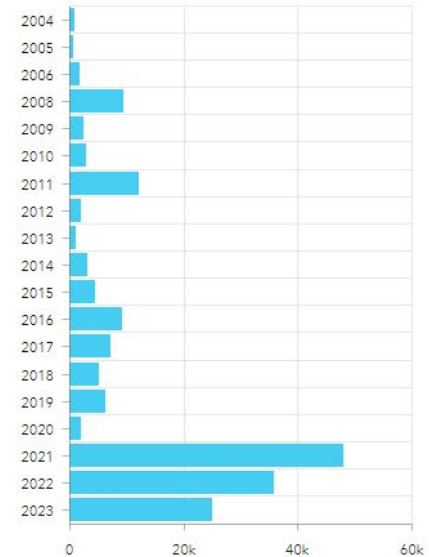
Alaska Coastal Data Acquisition Dashboard

alaskacoastalmappingstrategy.com

Alaska Coastal Data Acquisition Dashboard



Acquisition Year(s) by Square Miles



All Projects

Currently Visible Projects



Feedback Required – Do a Survey!



All NOAA Agencies

All Federal Entities

Alaska Regional Survey

Mapping Plan of Action



Prioritization Survey Results

akmappingpriorities.com



2021 Alaska Coastal and Ocean Mapping Prioritization Survey Results

Intro Page

Priorities

Map Products

Filter Results

About

Priorities

All participants were able to prioritize grids from low to high. The map to the right shows the most commonly voted priority by grid.

Filter

Top 5% Prioritized Grids

Top 10% Prioritized Grids

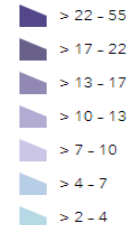
Top 20% Prioritized Grids

Legend

Alaska Coastline

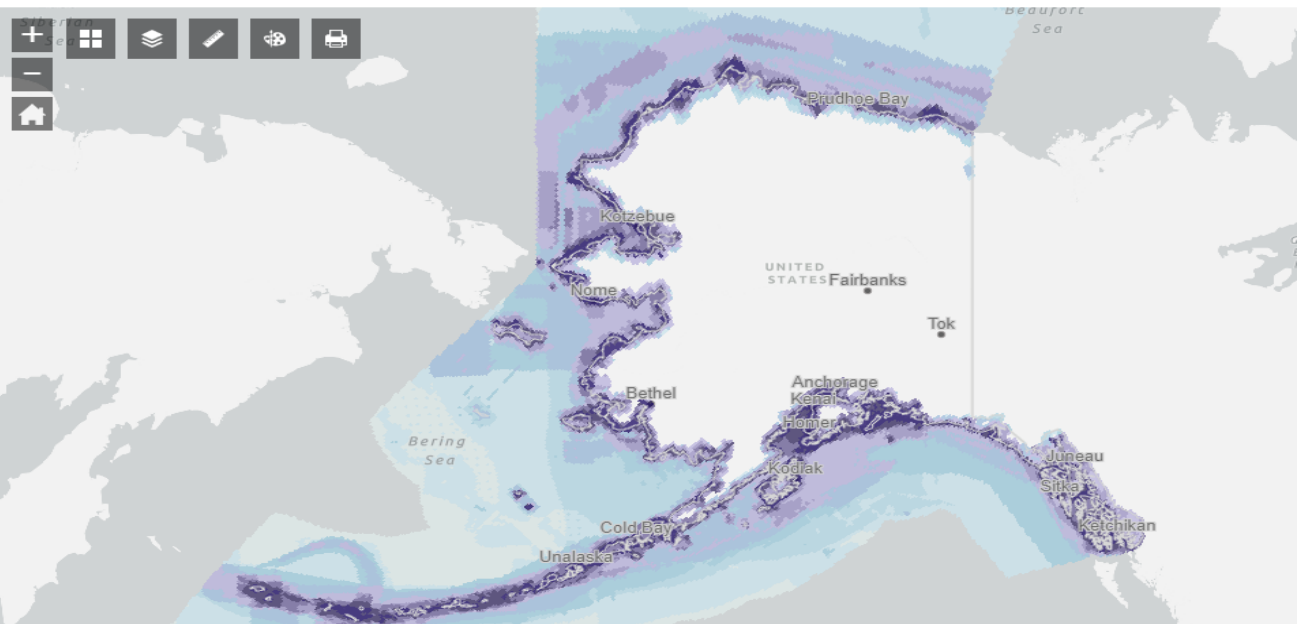
2021 Priority Summary

Priority: Total Requests-Weighted



Infographic

Grid by Preferred Priority Ranking





How do we find partners to leverage resources?

- Alaska is BIG...
- Finding mapping partners is like playing pin the tail on the donkey blindfolded on a football field!



Mapping Partner Finder Tool

akmappingpartnerfinder.com

Alaska Coastal & Ocean Mapping Partner Finding Tool

Find address or place

Find a Partner

Area of Interest

Select draw mode

Buffer distance (optional)

Show results within

Run Report Start Over

Using Partner Finder

- 1) Ensure the Partner Finding widget is open by select the magnifying glass icon in the top left corner.
- 2) Select the drawing option you want to use and draw around the area you are looking for a partner in.
- 3) Now click the "Run Report" button to generate a list of all possible partners in your Area of Interest.
- 4) To see a list of partners, expand the + on the left. Click the printer to generate a PDF report.



Mapping Partner Finder Reports

- I have a list of potential mapping partners... now what?
- If you need help reaching out to these agencies to discuss potential mapping partnerships, send your Partner Finder Report to:

iwgocm.staff@noaa.gov

WHAT & WHERE

How do we keep track of it all?

- Target 1A**
Top 5% of priority Areas
Unmapped communities classified as environmentally threatened
- Target 1B**
Top 10% of priority areas
Unmapped communities that are not threatened
- Target 2A**
Top 25% of priority areas
Communities in need of map refresh
- Target 2B**
Any cell with 1 or more "high" priority vote
- Target 3**
Any remaining areas that are unpopulated and/or non-priority



SCAN ME

Alaska Coastal Mapping Plan of Action

Alaska Coastal Mapping Plan of Action

Imagery

Elevation

Shoreline

Geospatial Framework

Imagery Mapping Plan of Action Dashboard

Onshore or Offshore?
Both

Target 1

9,321
Sq Miles

Target 1A

2,252 sq mi

Threatened
Communities, Top 5%

Target 1B

7,069 sq mi

Unmapped
Communities, Top 10%

Target 2

51,794
Sq Miles

Target 2A

6,216 sq mi

Remaining Communities

Target 2B

45,578 sq mi

All High Priority Areas
from Survey

Target 3

8,693
Sq Miles

Total Square Miles to Map

69,808

Sq Miles



Esri, HERE, Garmin, FAO, NOAA, USGS, EPA

Powered by Esri



Putting Strategy into Tactics



- Generalized Targets to inform program planning and funding allocation to accomplish the goal of comprehensive statewide coastal mapping by 2030.
- Continued work toward initiative milestones and program goals



**2022 Alaska
Coastal & Ocean
Mapping Summit
Nov 16th & 17th**



SCAN ME

Thank you!

AGC 2022 GIS Day Celebration