



Efficiency in Realtime GIS Project Management Tools

Dave Neff, C.H.

Woolpert at a Glance



1911

Founded in
Dayton, Ohio



65+

Offices
Worldwide



2000+

Global
Employees



Areas of Specialization



ARCHITECTURE

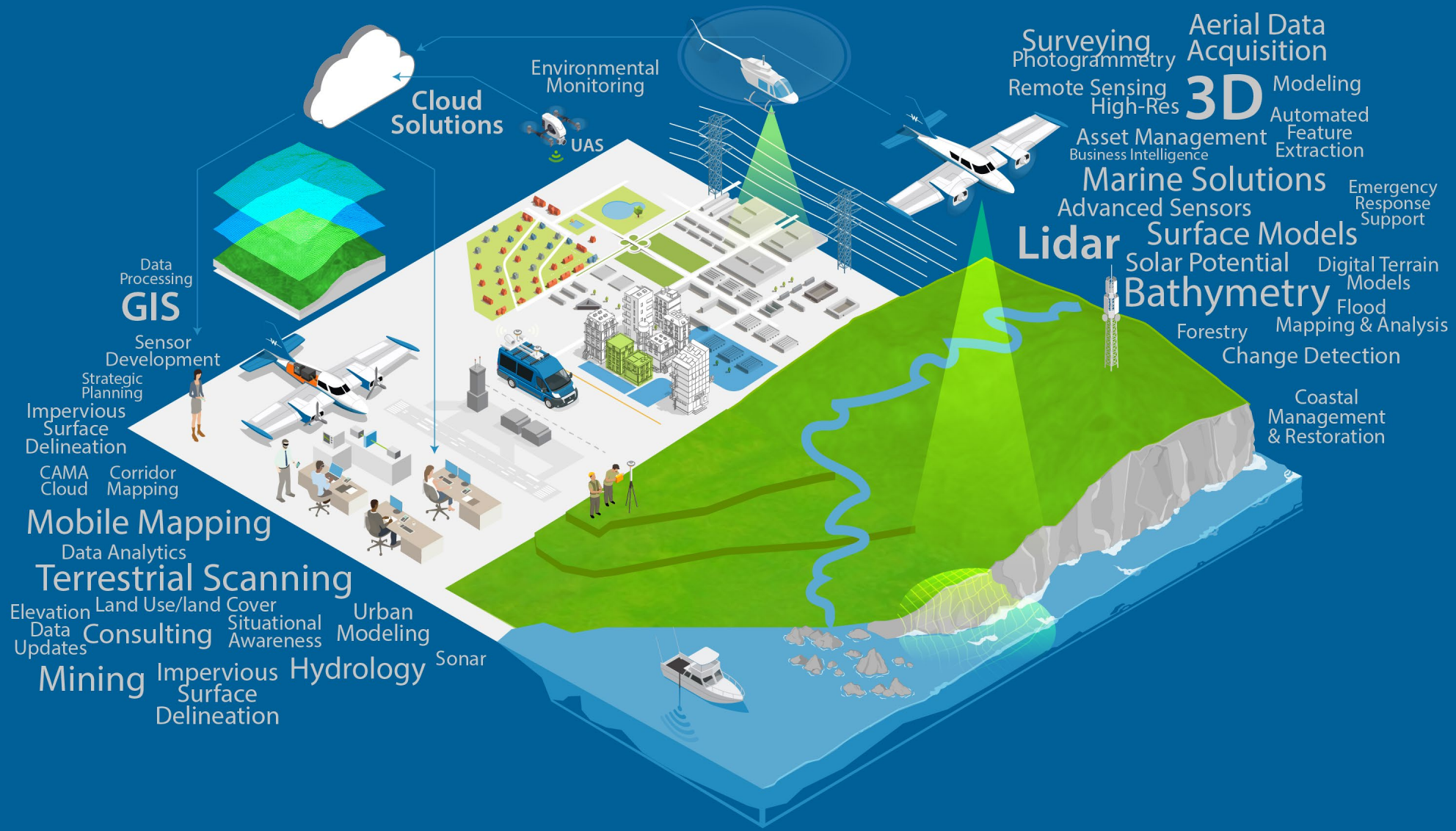


ENGINEERING



GEOSPATIAL

WOOLPERT GEOSPATIAL CAPABILITIES



Woolpert

- 850+ Geospatial professionals
- Geospatial services including hydrographic survey - airborne topographic and bathymetric survey - GIS program development
- National and international presence including CONUS, Alaska, South Pacific, Australia, Europe, Asia, and more
- Since 2005 Woolpert has served the state of Alaska and performs survey work year round
- Navigation – Utility Installation/decommissioning – Oil and Gas Preservation – Marine Construction – Environmental Mapping – Coastal Resiliency
- 20+ Vessel Fleet, XX+ Aircraft Fleet, Autonomous capabilities, custom GIS Asset management tools



Geospatial Information Systems Toolset

- Cloud Based GIS Sharepoint
- Multi Browser Support
- Collaboration Space / **Blueboard**
 - Intra-Company
 - Client / Vendor
 - Public
- Customizable Environment/Architecture
- 2D, 3D, and 4D Data Visualization
- No licensing or training necessary

[Woolpert Fleet Tracker](#)

[Cape Newenham Hydrographic Survey](#)

[Barry Glacier Emergency Survey](#)

[Sediment Transport Study SF Bay](#)

[Cable Routing Surveys](#)

[Public Facing GIS Utility](#)

