

# eTrac

---

A WOOLPERT COMPANY



# Evolving Hydrographic Survey with Enhanced Internet Connectivity

Approaches to Nome, Norton Sound, Alaska



# Overview

- 1 The Project (Approaches to Nome)
- 2 New Communications Technology
- 3 Changes to Data Acquisition
- 4 Changes to Data Processing and Management
- 5 Improvements to Safety

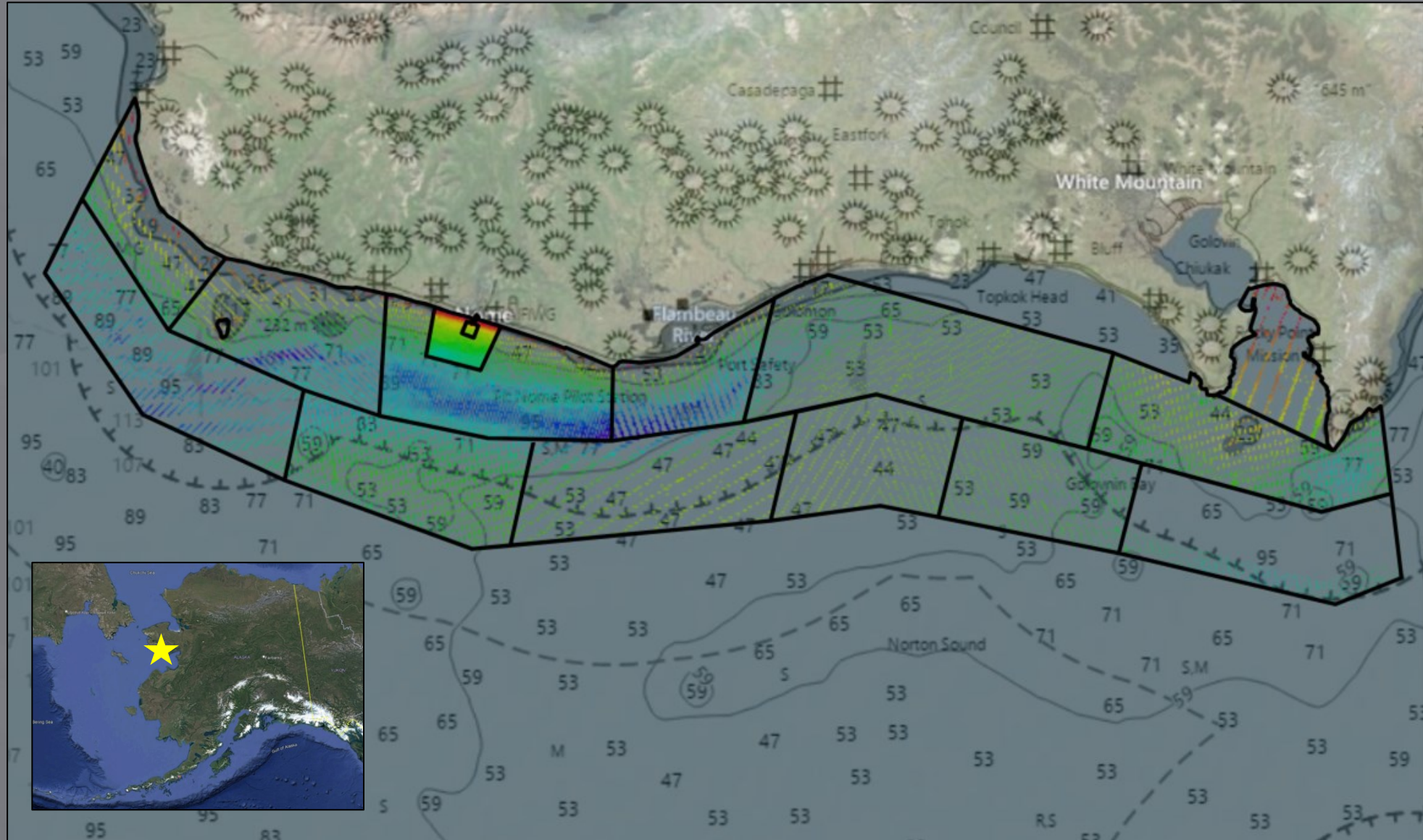




# Approaches to Nome, AK

## By the Numbers:

- 1700 nm<sup>2</sup>
- 14,000 Nautical Miles
- 4 Vessels
- 90 Days
- 4 TB of Raw Data





# Approaches to Nome, AK

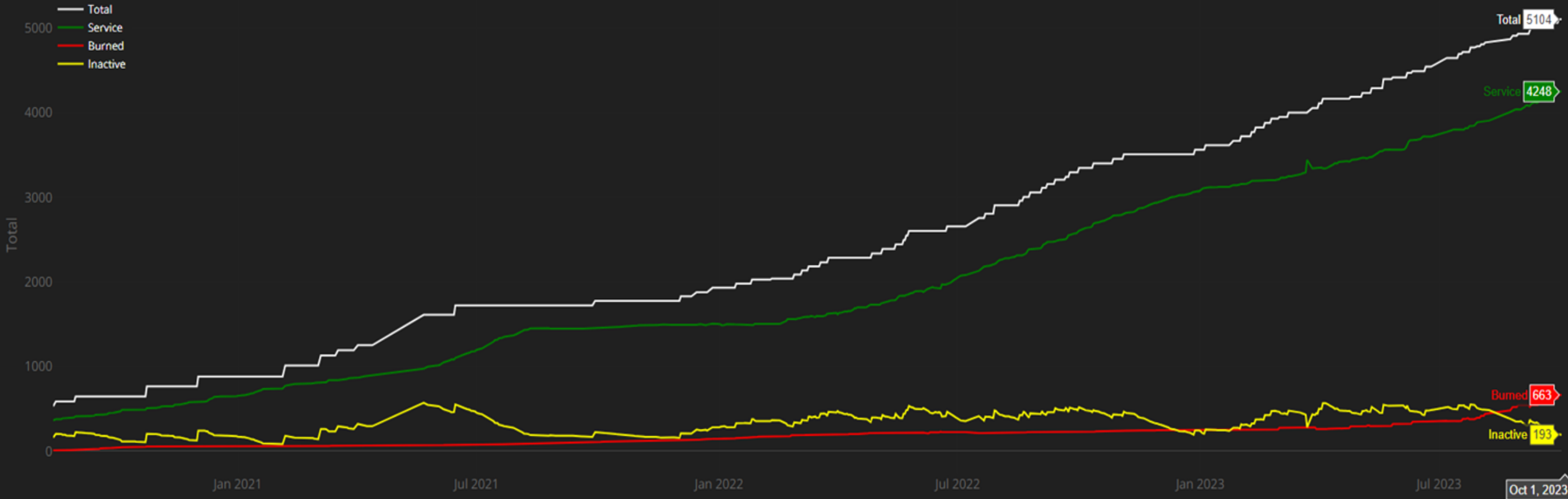
## Survey Fleet



# Starlink



<https://satellitemap.space/?constellation=starlink#>





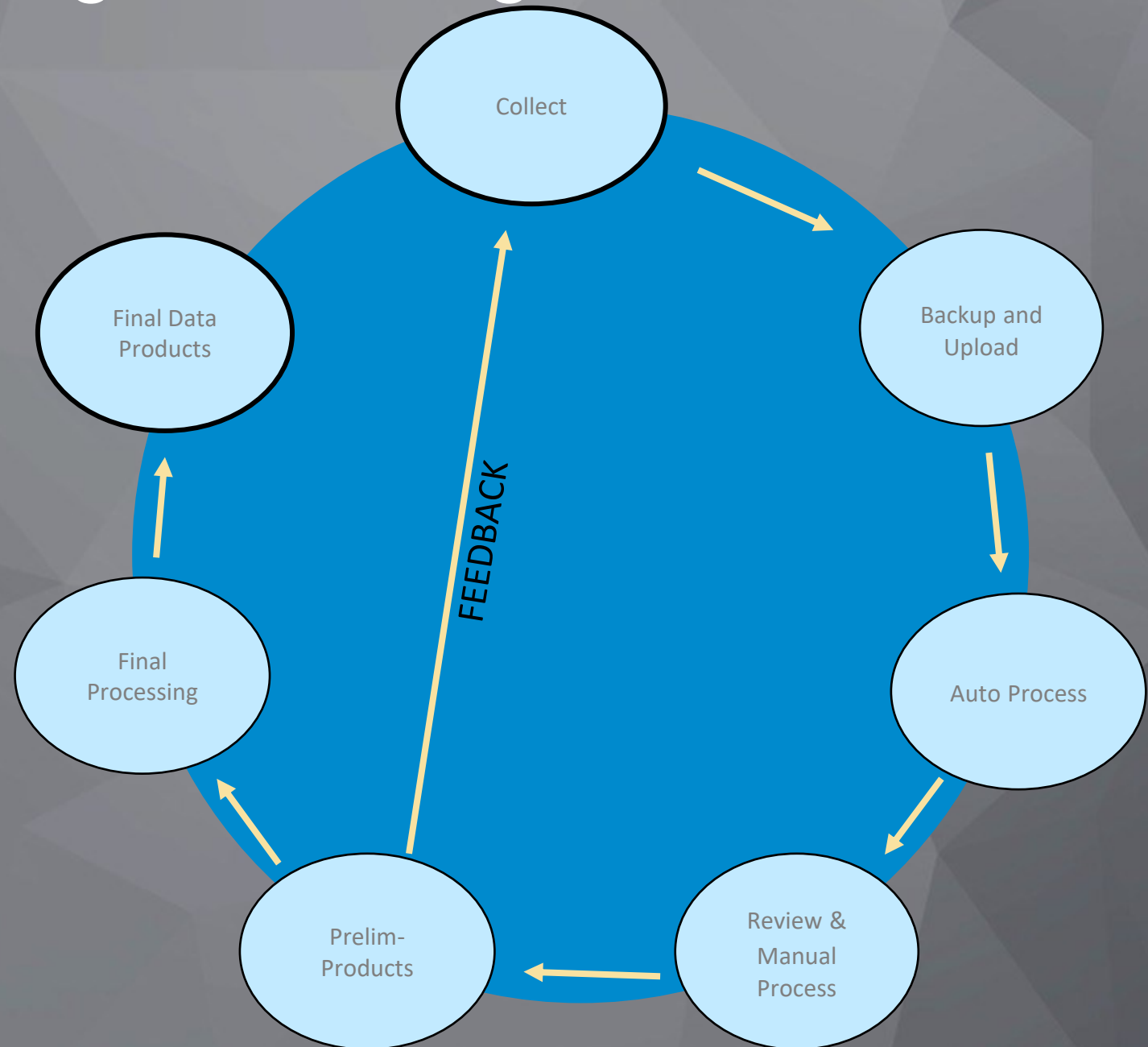
# Changes to Data Acquisition

- Data Backup
- Remote Login
- License Management
- Fleet Wide Collaboration
- Over The Horizon USV Operations



# Changes to Data Processing and Management

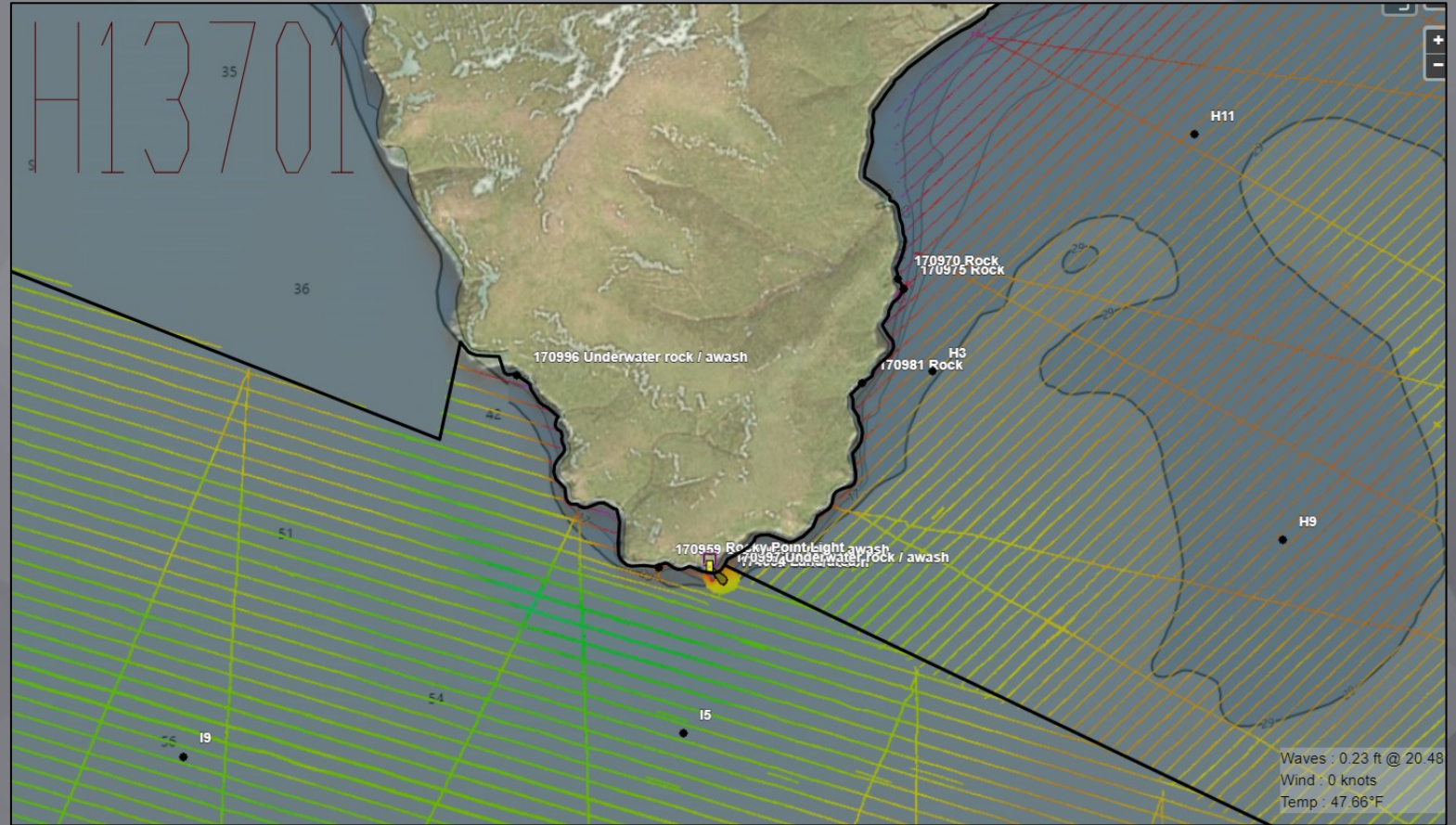
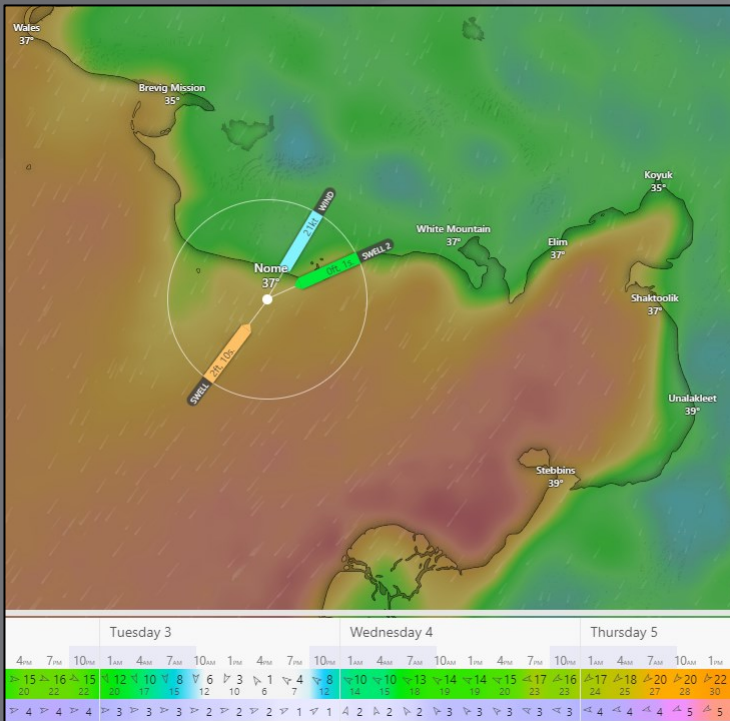
- Reduced Onsite Personal
- Improved Efficiency
- Multitasked Staff
- Dynamic Resourcing
- License Management
- Processing Automation
- Intra-Fleet Feedback Cycle





# Improvements to Safety of Operations

- Communication
- Weather Forecasts
- Operational Plans
- External Consulting
- Telemedicine



# Thank You

# eTrac

---

A WOOLPERT COMPANY



**Office of Coast Survey**  
National Oceanic and Atmospheric Administration  
U.S. Department of Commerce