

## Public private partnerships and community-based hydrographic surveying in remote and Arctic locations

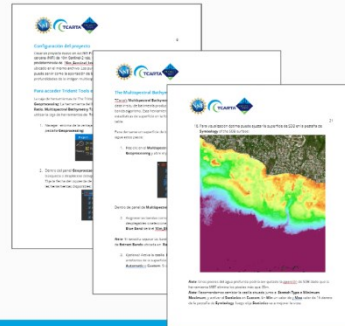


Kyle Goodrich  
President  
TCarta  
[kyle@tcarta.com](mailto:kyle@tcarta.com)



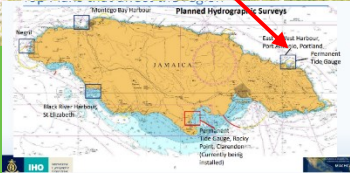
## Capacity Building and Training Programs

- In-Person and Remote instructional programs
- Learn the concepts of SDB and SDB processing; 3 Days
- + Applications and use cases; Advanced processing; 5 days
- Customized SDB training program available; Remote instruction



# Satellite Derived Bathymetry Capacity Building

Bowden Harbour, Jamaica



March, 2023



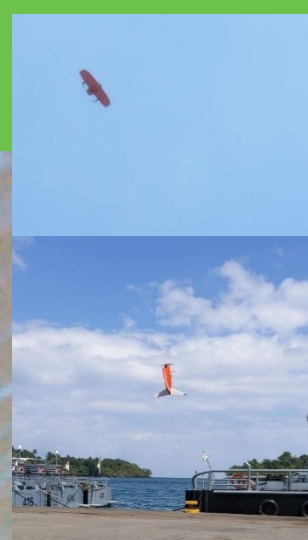
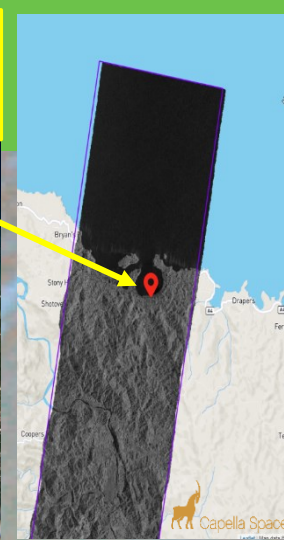
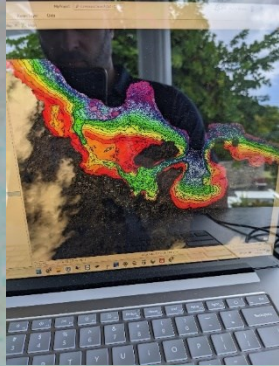
# 'All-Source' Integration

MBES | SDB | SAR | UAV

Imagery Tasked  
During Survey



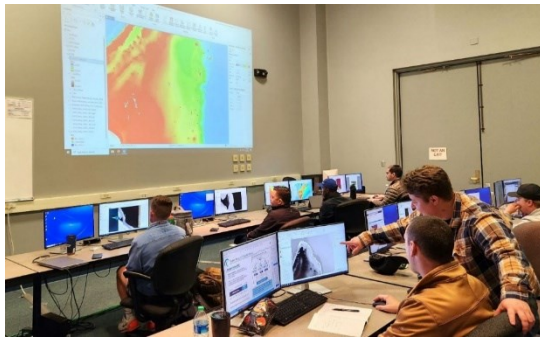
In the field



In the office



# University of Southern Mississippi, Stennis Space Center



Spring 2023

Instructing hydrographers of the future



# Marine Institute Summer Work Term Program



Co-funded by:



2 graduate students - ongoing

6 undergraduate - 12 week summer work term

Real-World Satellite Derived Bathymetry Work

- In-person instruction and virtual workrooms
- Student-generated SDB
- Marine Institute Native Village Research Sites AOIs
- SDB produced contributed to Seabed 2030

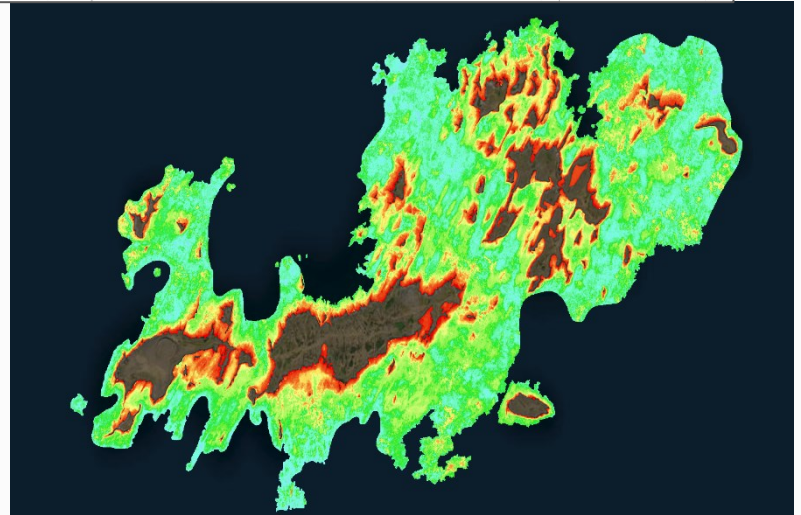
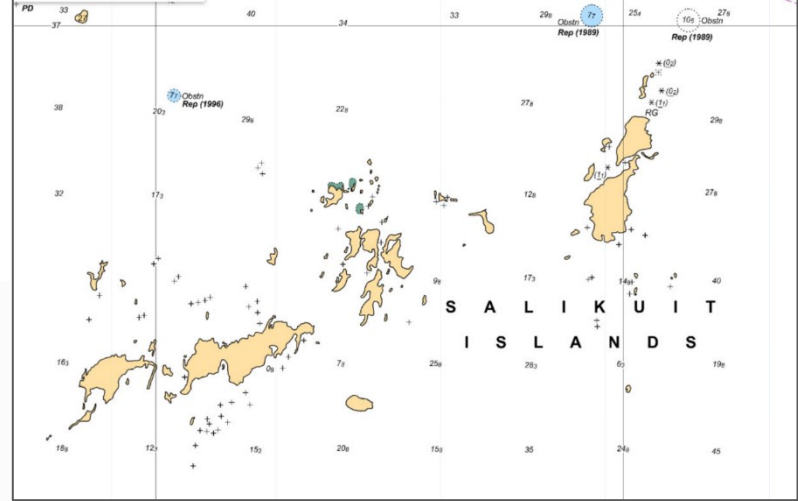




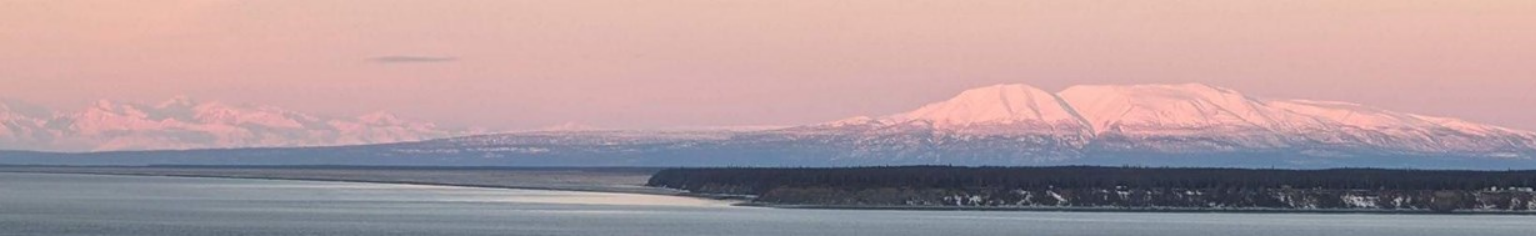
# Filling in Whitespace on Charts with SDB and Community based Hydrographic Surveying

Benefits to native village:

- Assessment of fishery resources
- Data to support local knowledge for navigation







Thank you.

Questions?



100% U.S Citizen Owned



Kyle Goodrich  
President  
TCarta  
kyle@tcarta.com

