

# Community-Centric Redistricting

**Presenter: Glen Greene, Resource Data**

Alaska GeoSummit 2023





November 23, 2021:  
Anchorage Assembly Declares Anchorage **Malapportioned**

May 23, 2022:  
Legal deadline to create and adopt redistricted boundaries

**6 Months**

*Seems nearly impossible, right?*

**Let's talk about how Anchorage did it in only 4 months**

# First: Some Vocabulary

A few key terms to understand

01

## Assembly District

Legislative units that represent neighborhoods in a community. Anchorage has six assembly districts, each with two elected members that collectively make up the Anchorage Assembly.

03

## Malapportioned

Divided in such a way that could allow any one group more influence than another.

02

## Redistricting

Process of drawing electoral district boundaries, done every 10 years following the release of new US Census data.

04

## Reapportionment

The specific process by which voting districts are redistributed to be compact and contiguous and achieve equal population and socio-economic integration.

# How was reapportionment triggered?

District	2020 Pop	Target Pop	Pop Difference	Deviation
1	26,816	48,541	-21,725	-81.02%
2	50,276	48,541	1,735	3.45%
3	51,687	48,541	3,146	6.09%
4	52,808	48,541	4,267	8.08%
5	54,628	48,541	6,087	11.14%
6	55,032	48,541	6,491	11.79%
<b>Totals</b>	<b>291,247</b>			

Lowest

Highest

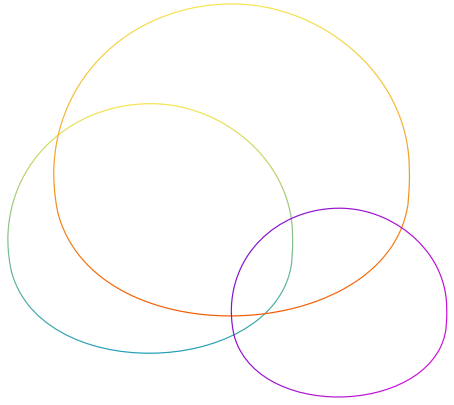
If the deviation spread between the **highest** and **lowest** deviations is greater than 10%, the Assembly is malapportioned

## Deviation Population (Pop) Calculations

- Target Pop = Total 2020 Pop / Total # of Districts
- Pop Difference = 2020 Pop – Target Pop
- Deviation = Population Difference / 2020 Pop.

# New Assembly District Requirements

- Equal Protection, “one person, one vote”
- Deviation actual population to target population < 10%
- Single district deviation > 5% must have a compelling reason
- Compact, contiguous, relatively integrated socioeconomic area
- Cannot be racially discriminatory



# Novel Approach

## Community Engagement

**MOA invited Anchorage into the mapping process on every level**



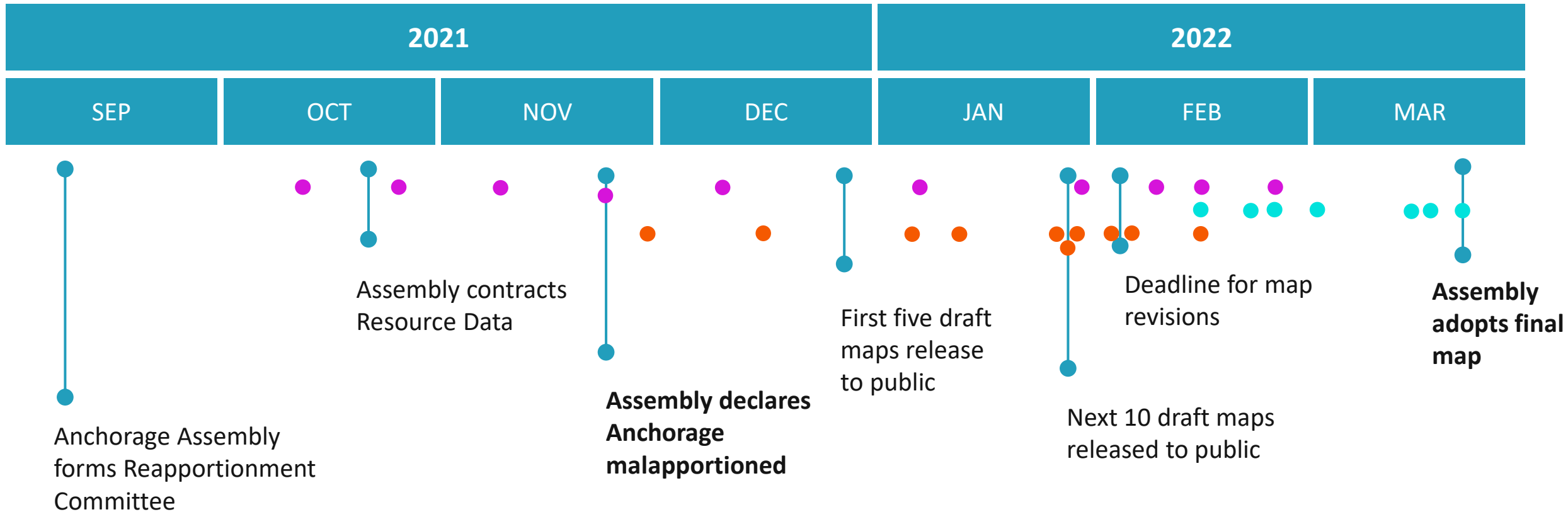
# Tech Stack

Utilizing MOA's existing ESRI system for mapping & analysis

TOOL	ArcMap	AGOL	Open Source Redistricting Applications	Esri Redistricting Application	SmartComment
	PDF Cartography	Story Maps	Public Boundary Delineation	Boundary Delineation	Public Commenting
PURPOSE	Spatial Analysis	Public Engagement	Public Engagement	Authoritative Deviation Analysis	Document Management

# Timeline and Public Outreach Process

From Malapportionment to Final Plan Adoption in Exactly Four Months

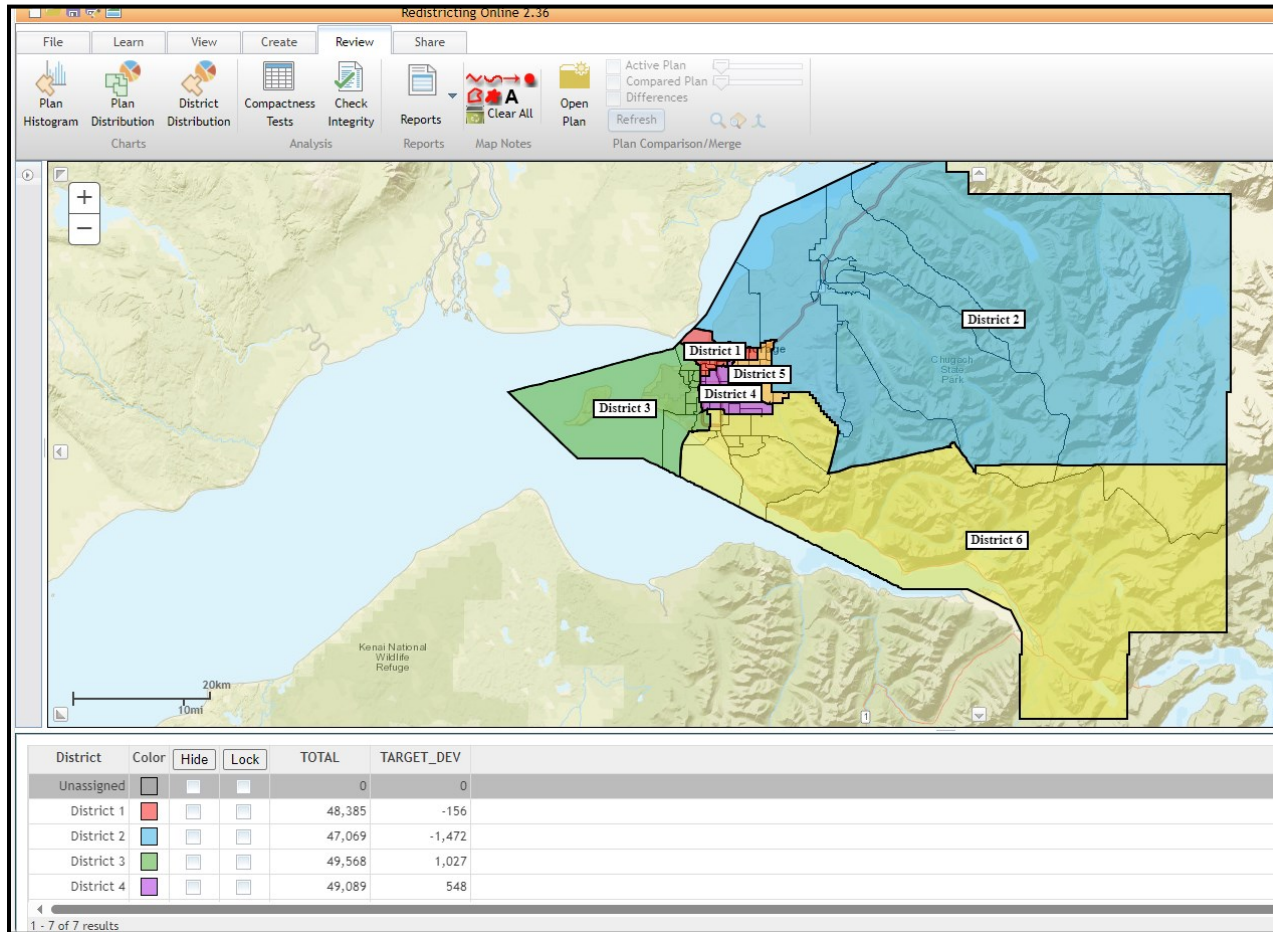


**KEY**

- Orange dot: Formal Community Meetings & Town Halls
- Purple dot: Reapportionment Committee Public Meetings
- Cyan dot: Reapportionment-Related Assembly Public Meetings



# Esri Redistricting Tool



### Integrity Tests

- ✓ Dual Assignment Check [Details...](#)
- ✓ Population Summary Check [Details...](#)
- ✓ District Count Check [Details...](#)
- ✓ Maximum Deviation Check [Details...](#)
- ✓ Overall Range Check [Details...](#)
- ✓ Null Assignment Check [Zoom To...](#)
- ✓ Connectivity Check [Details...](#)

# Public Map Viewer

**REAPPORTIONMENT ANCHORAGE: ARCHIVE 2022**

REAPPORTIONMENT ANCHORAGE: Approved Assembly District Boundaries 2022

These maps were under consideration by the Reapportionment Committee and the Anchorage Assembly during the 2022 reapportionment process. The final map of approved assembly district boundaries can be found at the Reapportionment Anchorage: Approved Assembly District Boundaries 2022 map viewer, which can be accessed through the link in the upper right of this page. To continue to the Reapportionment Anchorage main website please click on the Municipality of Anchorage logo to the right.

Map 1 | Map 2 | Map 3 | Map 4 | Map 5 | Map 6 v2 | Map 7 v2 | Map 8 | Map 9 v2 | Map 10 | Map 11 v2 | Kennedy S1 Map 11 v2 | Constant S1 Map 11 v2 | Constant S1 Map 11 v2 (amended) | Zaletel & Rivera Map 11 v2

**Public Submission Map: Matt Greene**

District 1 expands east into current District 2, picking up roughly half of JBER. District 2 grows southward into a large portion of current District 6. District 3 is reduced slightly to accommodate District 6 moving northward. District 4 expands east into current District 5. District 5 is reduced in size, with the south boundary moving up to Tudor Rd, and the north shifts slightly into current District 2. District 6 moves north into current Districts 3 and 4, and west into current District 3. The overall area of District 6 is significantly reduced by the District 2 expansion.

POPULATION DEVIATION SUMMARY				
District	Target Population	Actual Population	# Deviation	% Deviation
District 1	48541	48390	-151	-0.31%
District 2	48541	48605	64	0.13%
District 3	48541	48912	371	0.76%
District 4	48541	48600	59	0.12%
District 5	48541	48388	-153	-0.32%
District 6	48541	48352	-189	-0.39%
<b>Total Deviation*:</b>				<b>1.15%</b>

\*Total Deviation is calculated by adding the absolute values of the greatest positive and greatest negative individual district deviations.

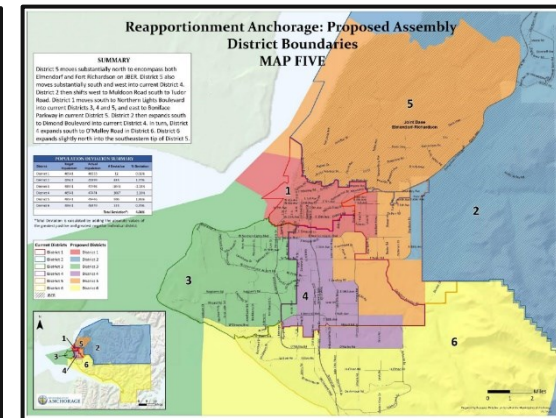
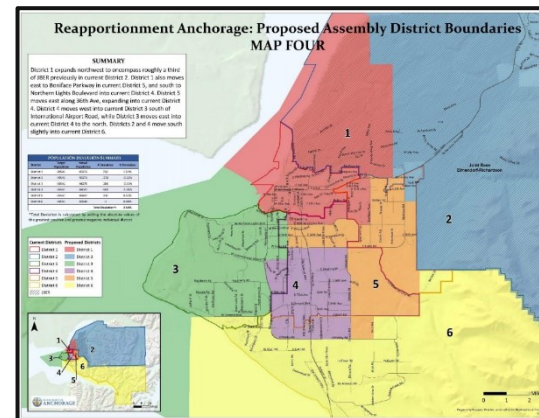
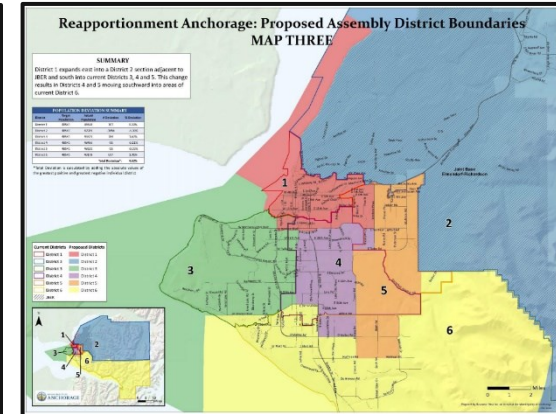
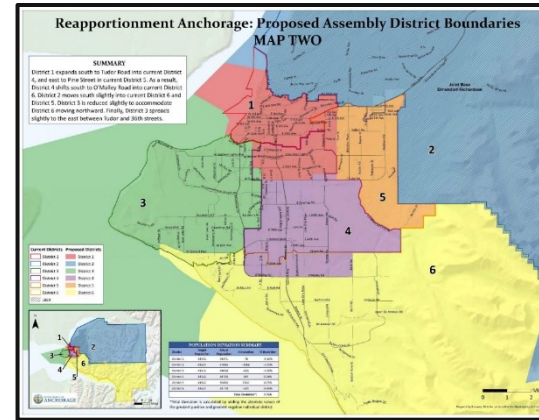
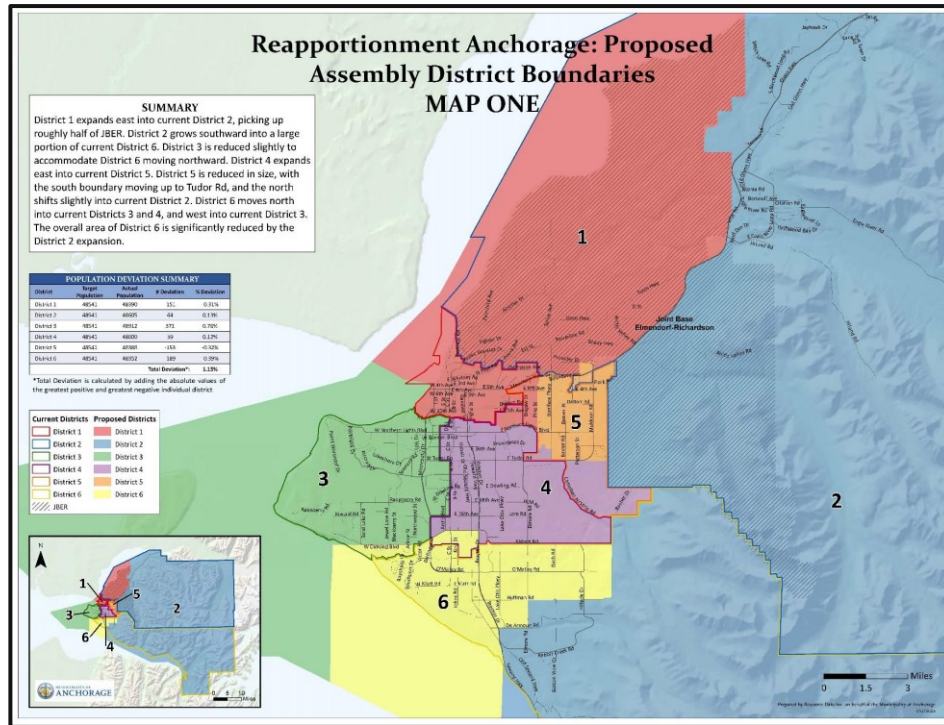
Esri, USGS | Kenai Peninsula Borough, Matanuska-Susitna Borough GIS, Municipality of Anchorage, State of Alaska, Esri, HERE, Garmin, S...

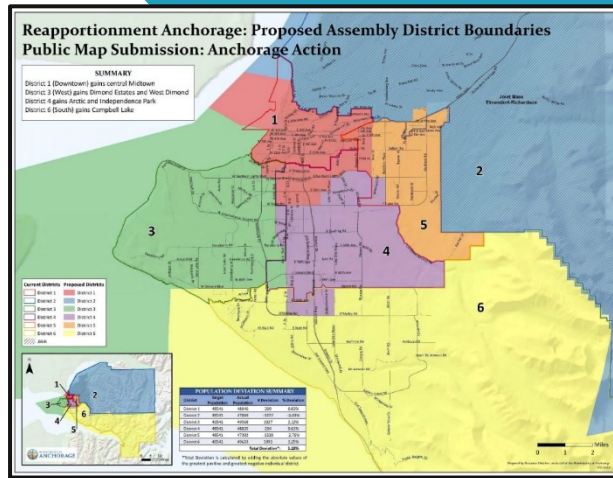


# Redistricting Preliminary Maps

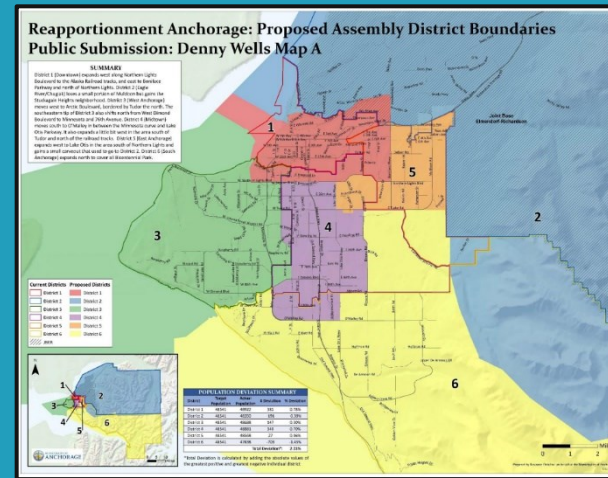
## 1st Round of Draft Maps

- **Resource Data** generated 4 maps agnostic to political boundaries intended to start conversations, engage public interest, and solicit opinions
- Public mapper created a 5<sup>th</sup> (Titled: Map One) map - released with Resource Data's original 4





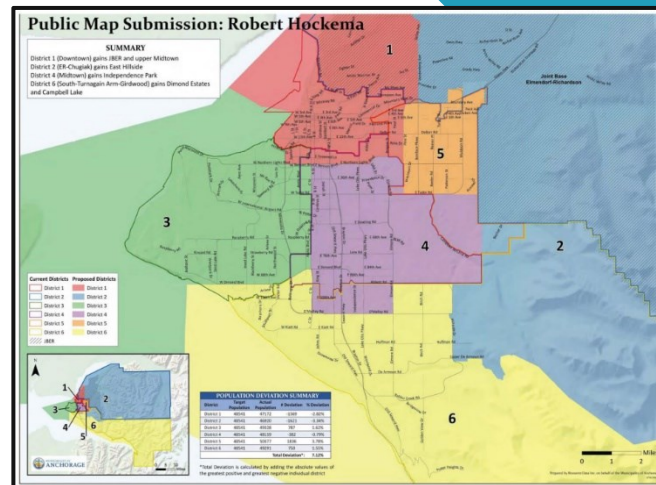
Anchorage Action



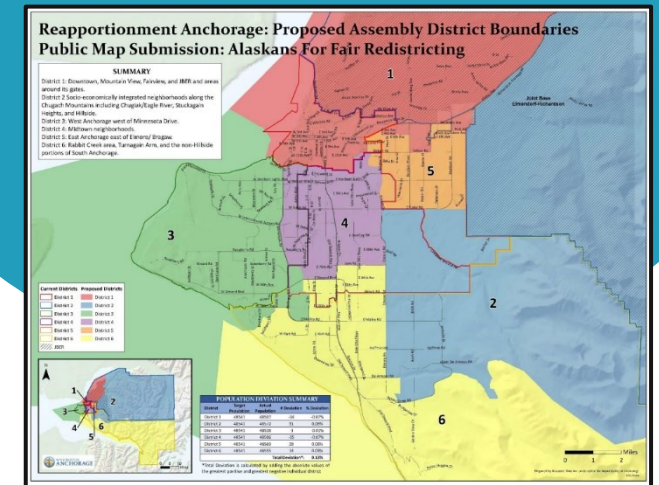
Public Submission

# Public Mappers Get to Work

2nd round of drafts



Public Submission

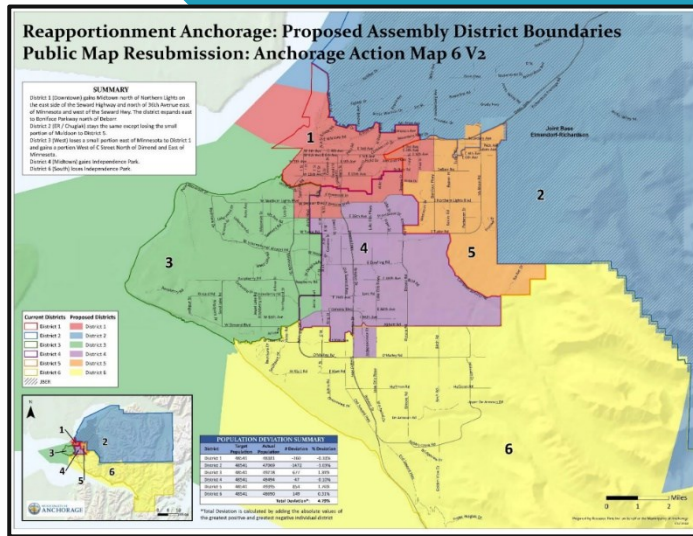


Alaskans for Fair Redistricting

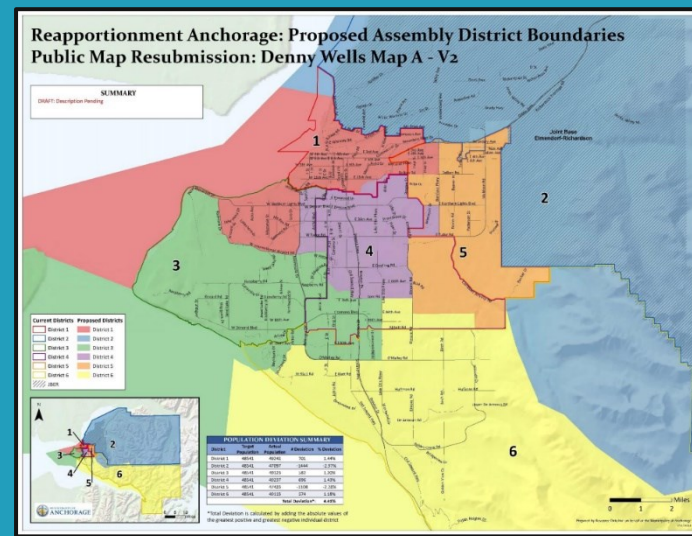


# Public Mappers Redraft

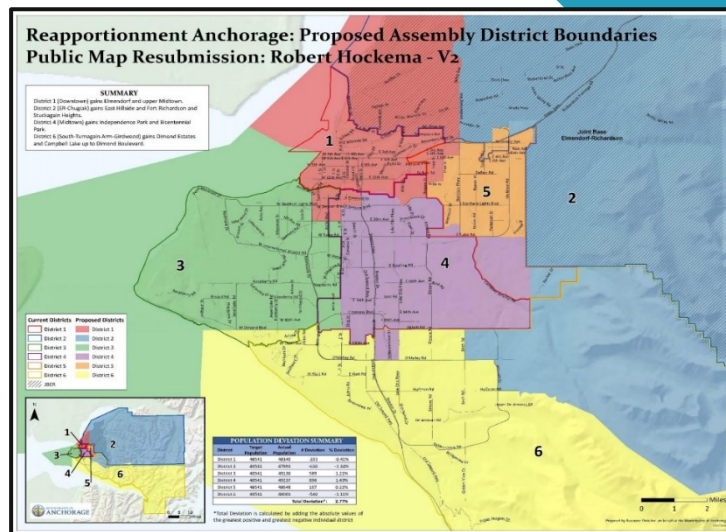
3rd round



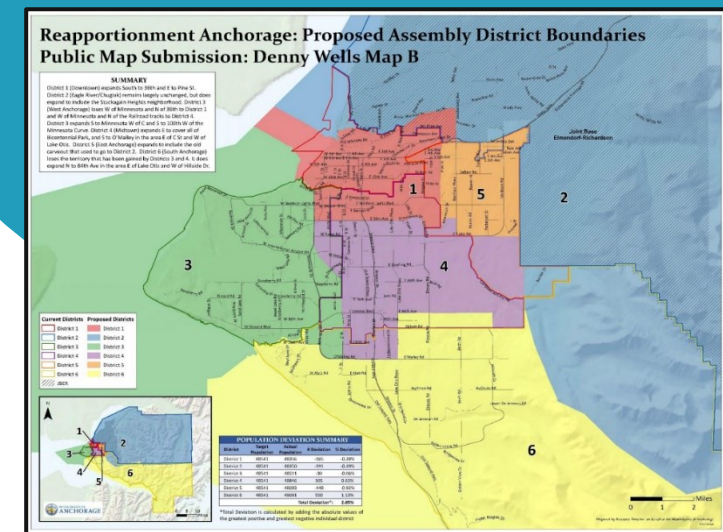
Anchorage Action V2



Denny Wells Map A V2



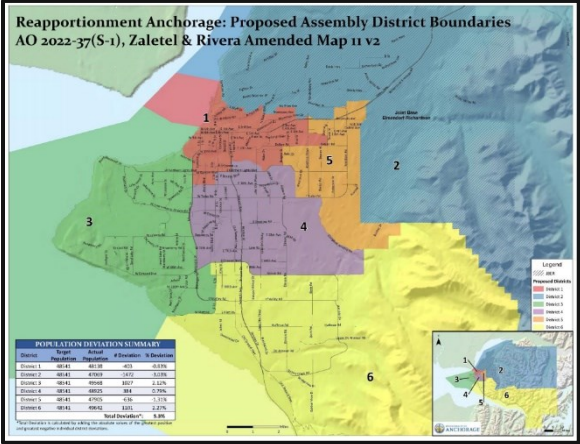
Robert Hockema V2



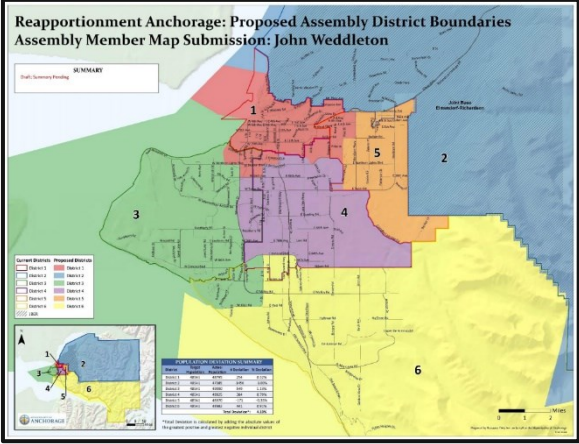
Denny Wells Map B



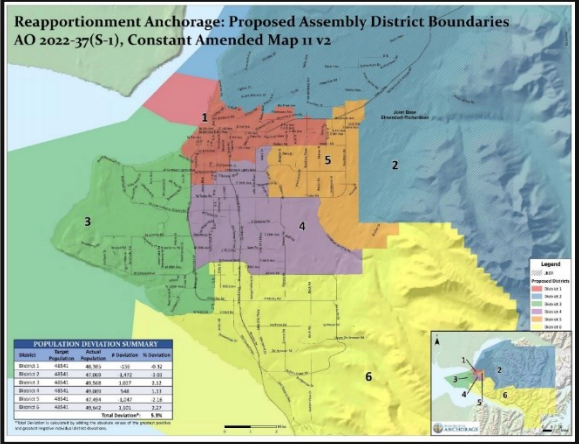
# Assembly Members Create Maps



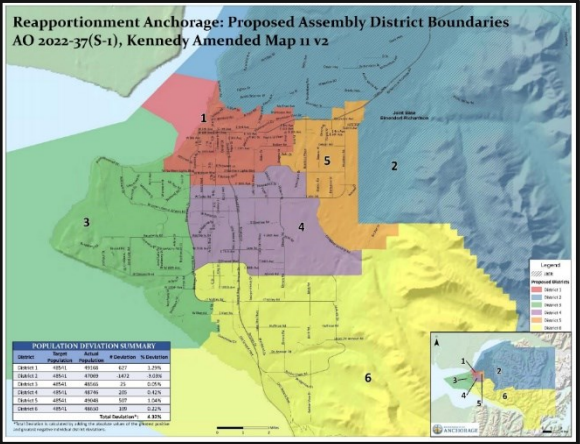
Meg Zaletel & Felix Rivera



John Weddleton

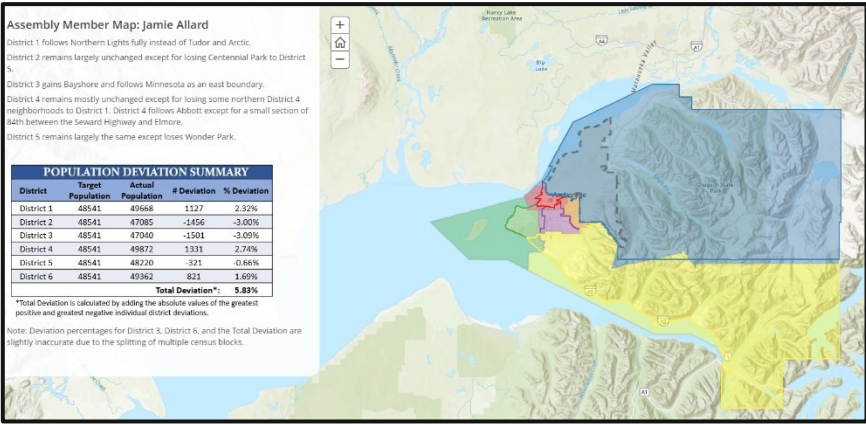


Christopher Constant



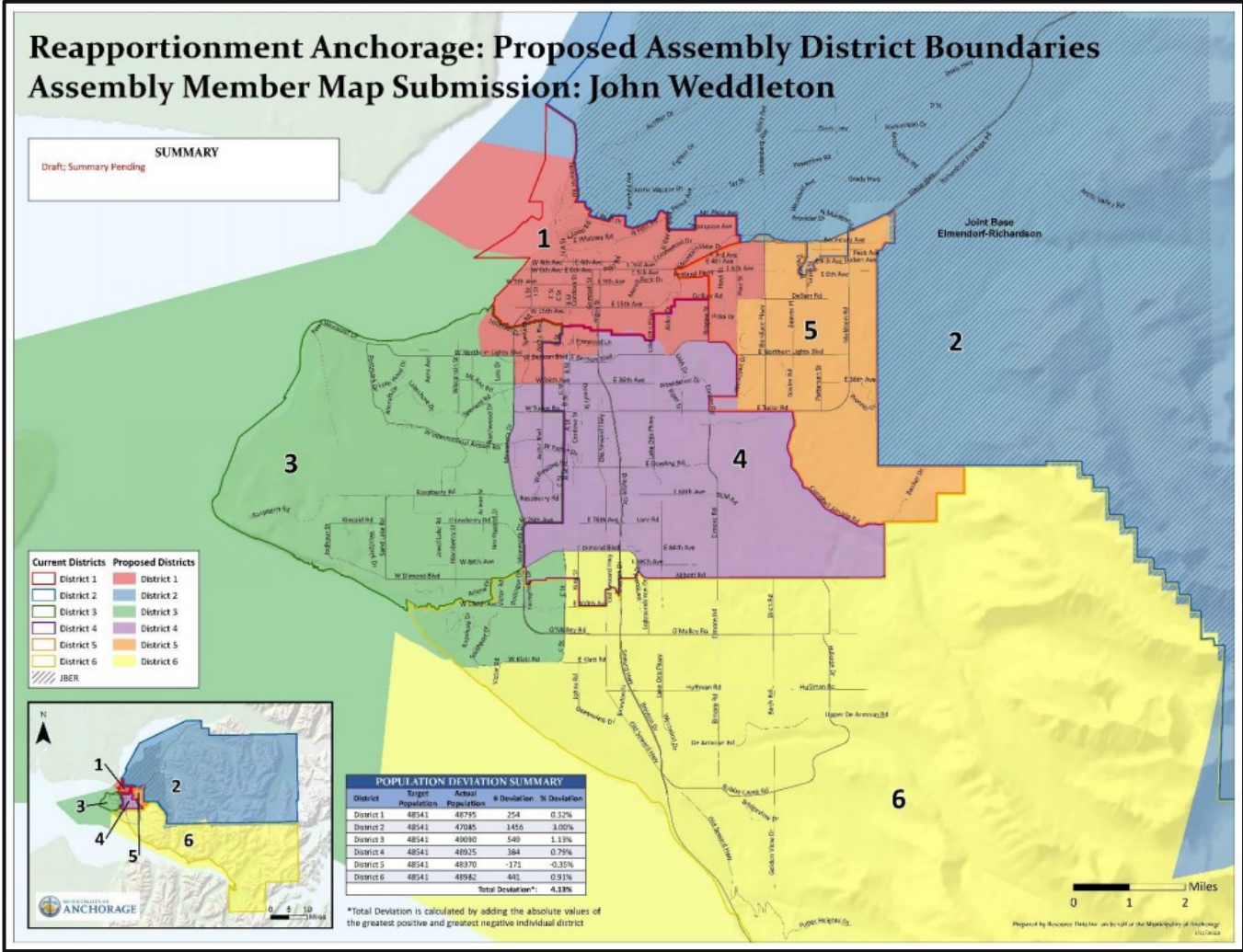
Crystal Kennedy

## 4th Round of Draft Maps



Jamie Allard & Mayor Dave Bronson

# Assembly Members Collaborate





# After Careful Deliberation...

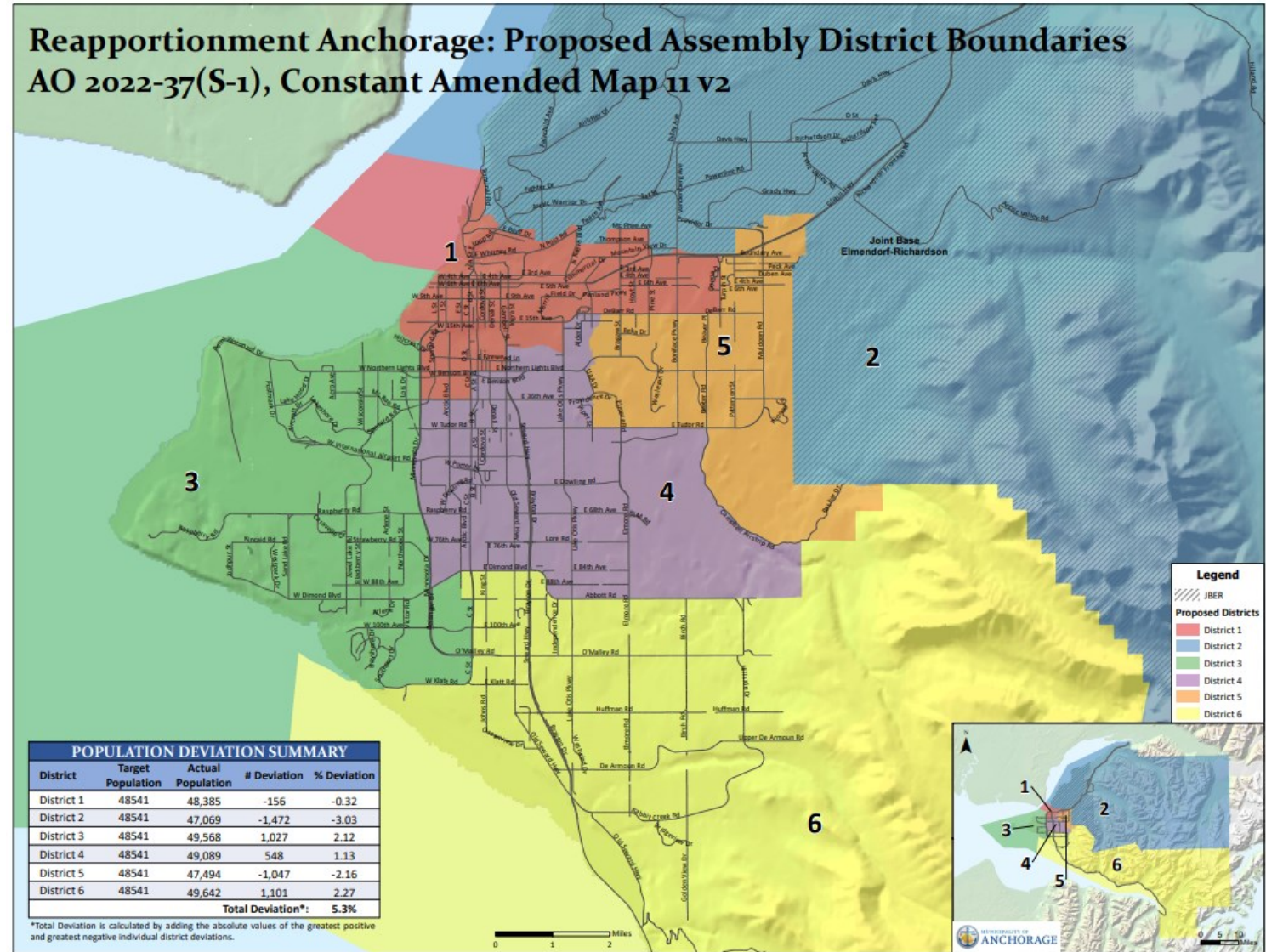
**The Anchorage Assembly officially considered 21 maps**

- 4 created by Resource Data
- 3 created by Assembly members
- 7 created by public mappers
- 2 created in collaboration: Assembly member and public mapper
- 5 created by Assembly members with the public

**And hundreds of comments submitted via the public comment portal...**

# The winner is...

- Constant Amended Map 11 v2
- The final map was submitted by District 1 Assembly Member Christopher Constant.
- It was an amended version of the Weddleton map, largely created by *public mapper Denny Wells*.



# Public Engagement Success

By involving the community early and often, Anchorage came out ahead of schedule and unified

## Iterative Approach

The Assembly welcomed continuous feedback and involvement from the public

## Collaboration

The successful map was created through community member and Assembly member collaboration



## Flexible Thinking

By initiating the process with five maps the Assembly was able to get the public inspired and undivided

## Advanced Planning

The Assembly stayed on track and finish redistricting 2 months ahead of schedule by creating a detailed plan that kept the community engaged on every level

## Open Communication

Through frequent public meetings, the Assembly provided transparency and eliminated surprises

# Visit Us at Booth 7

- Enter the drawing for the **YETI COOLER** and **KALADI** gift cards
- Free Resource Data **Camping Mugs**
- Free sparkling waters



resource  
data

