

The background features a dark blue mountain-like shape on the left, a teal gradient on the right, and a bright orange shape at the bottom left. The text is overlaid on these elements.

GIS On Oak Island

How Spatial Analysis May Help Crack the Mystery

Presenter: Erin King, Resource Data

Alaska GeoSummit 2023



THE CURSE OF
OAK ISLAND

Location of Oak Island



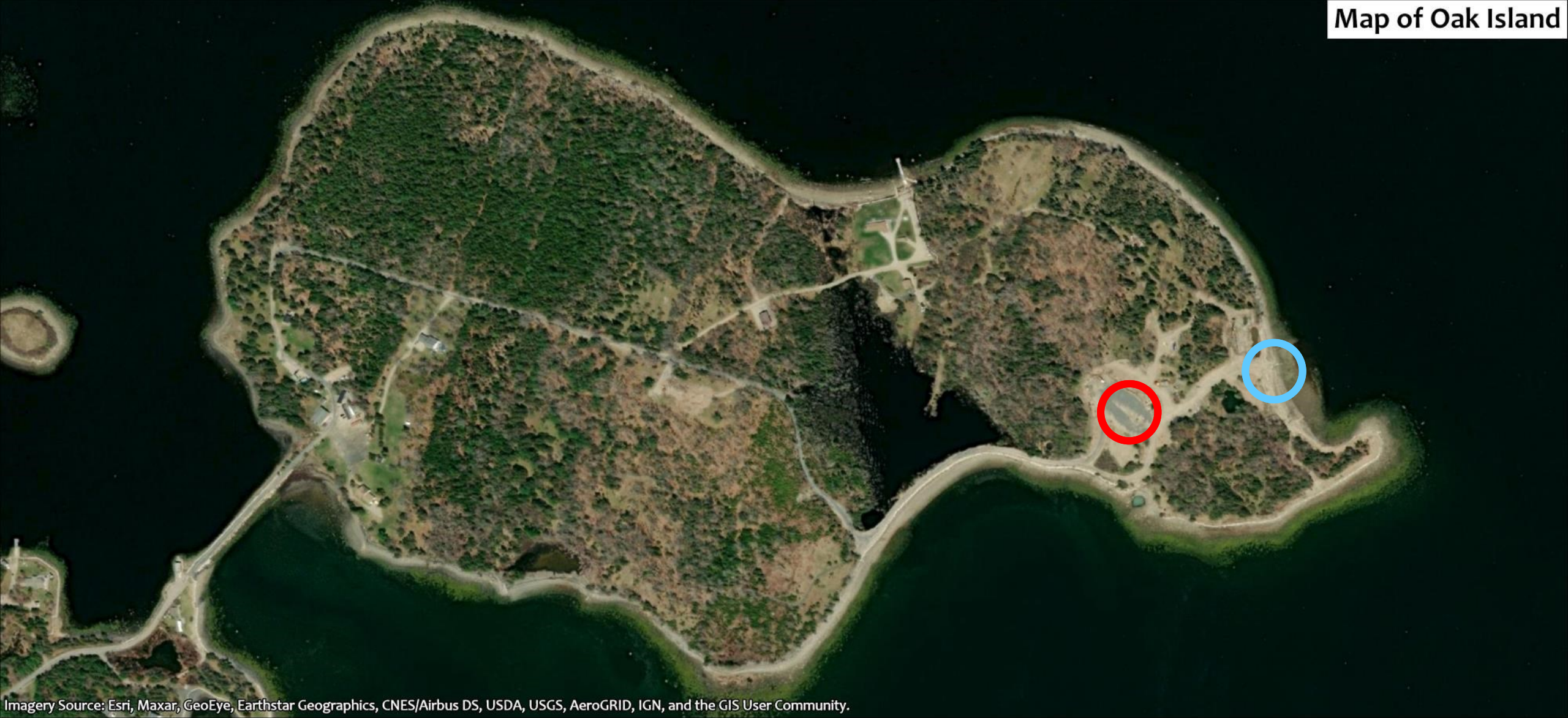
Data Sources: Esri, USGS, Esri, HERE, Garmin, FAO, NOAA, USGS, EPA, Esri, USGS.



0 500 1,000 1,500 Kilometers

0 500 1,000 Miles





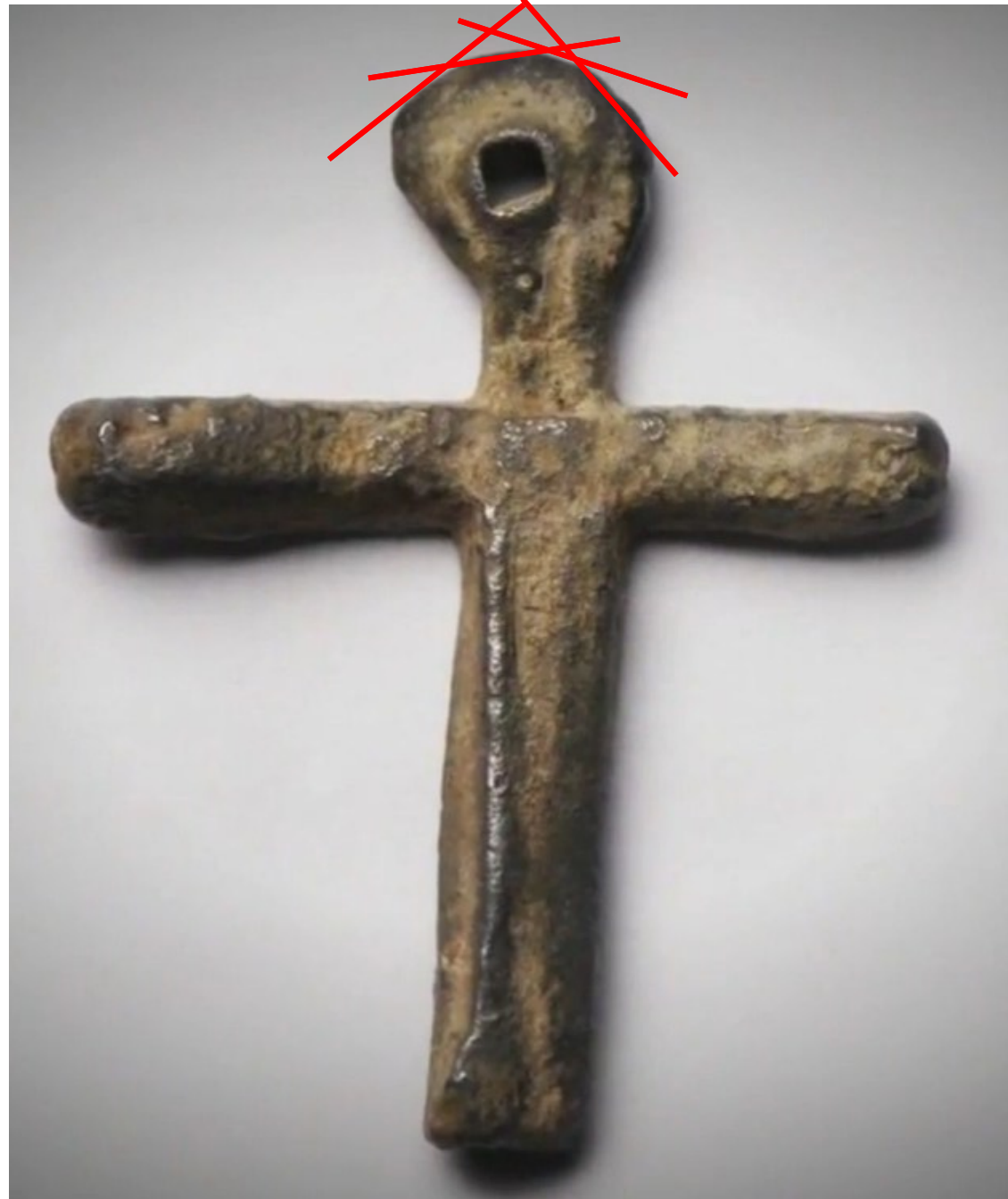
Imagery Source: Esri, Maxar, GeoEye, Earthstar Geographics, CNES/Airbus DS, USDA, USGS, AeroGRID, IGN, and the GIS User Community.

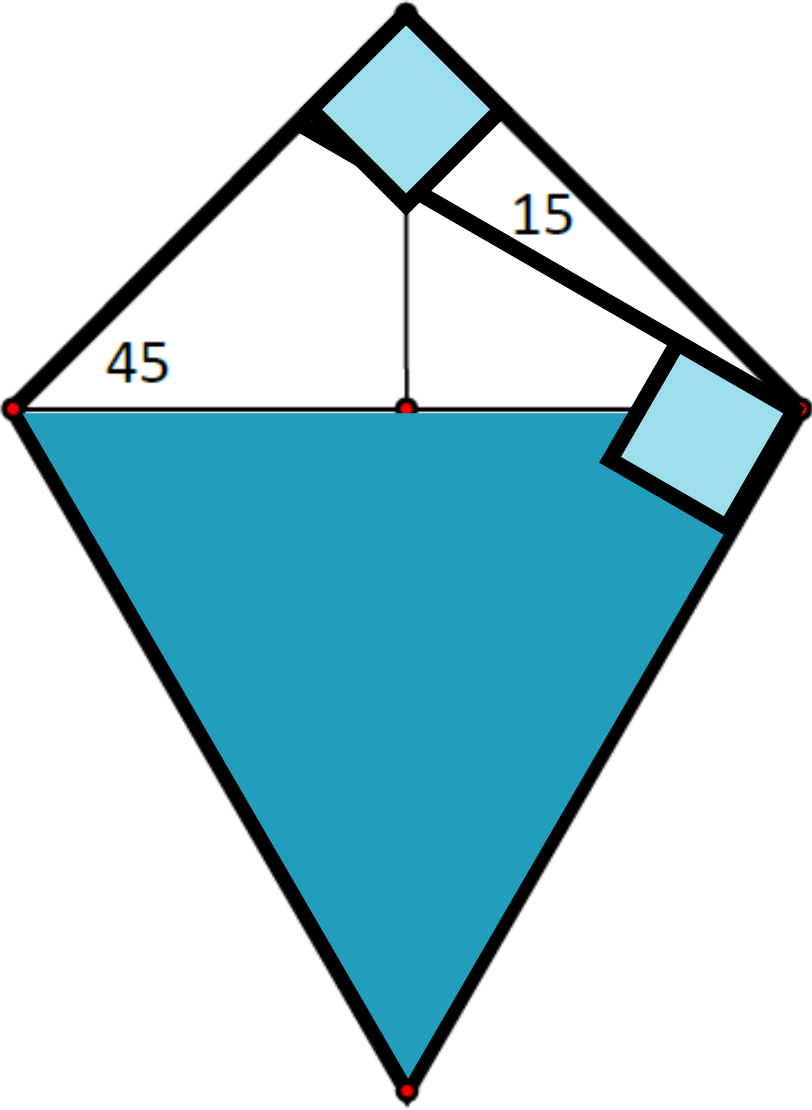


0 100 200 300 Meters

0 200 400 600 800 1,000 Feet







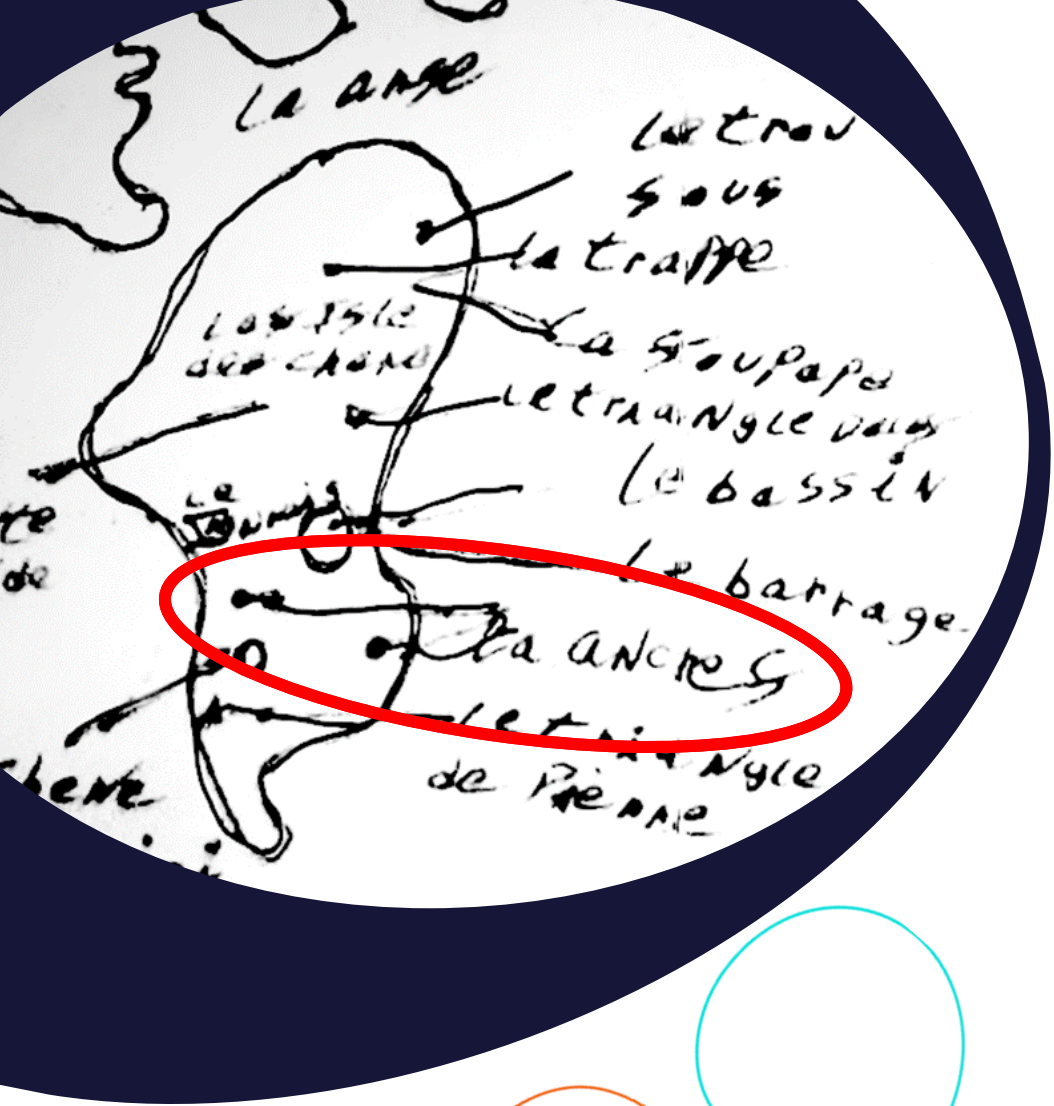


God the Geometer, The Frontispiece of Bible Moralisee, circa 1220-1230



Section of "School of Athens", Room of Segnatura, Vatican, 1509

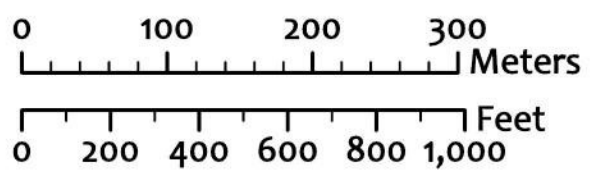




Survey Markers!



Imagery Source: Esri, Maxar, GeoEye, Earthstar Geographics, CNES/Airbus DS, USDA, USGS, AeroGRID, IGN, and the GIS User Community.

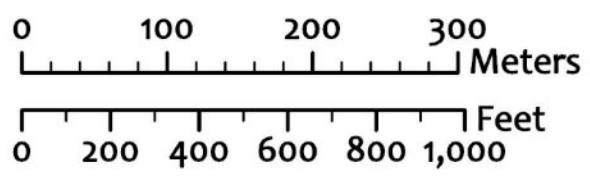


 Nolan's Cross





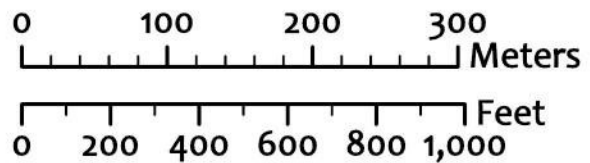
Imagery Source: Esri, Maxar, GeoEye, Earthstar Geographics, CNES/Airbus DS, USDA, USGS, AeroGRID, IGN, and the GIS User Community.



-  Boulder
-  Nolan's Cross
-  Grid Line

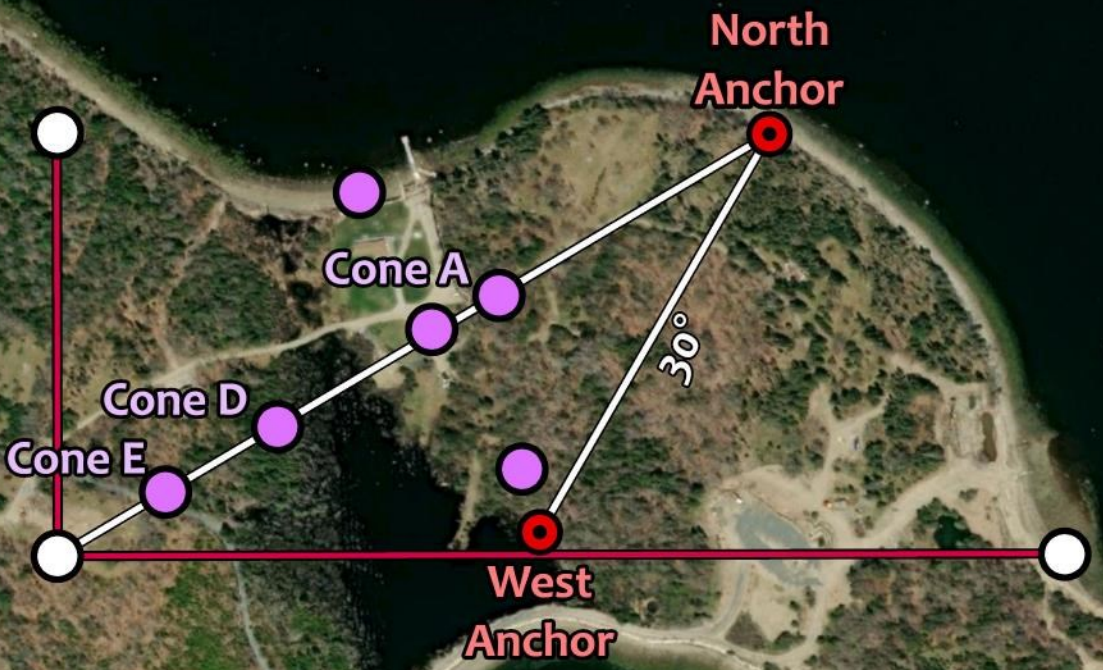
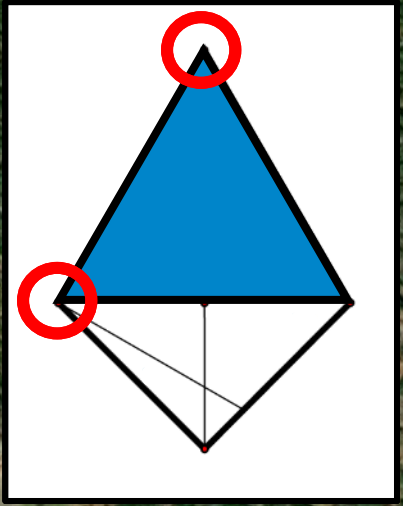


Boulder Alignments on Oak Island



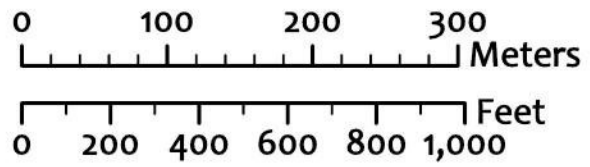
- Boulder
- Nolan's Cross
- Anchor
- Grid Line





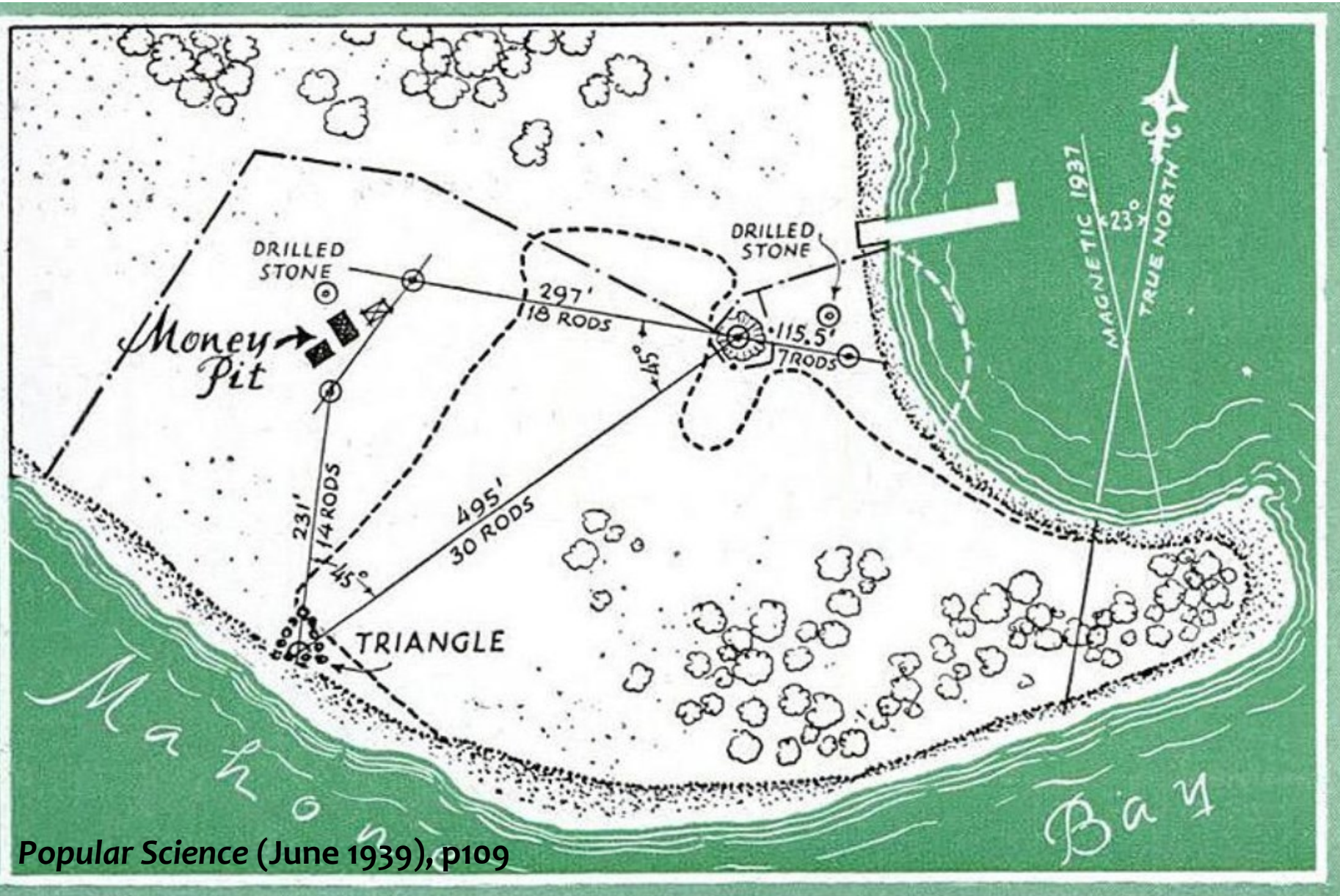
1 in \approx 1/10 mi

Imagery Source: Esri, Maxar, GeoEye, Earthstar Geographics, CNES/Airbus DS, USDA, USGS, AeroGRID, IGN, and the GIS User Community.



- Boulder
- Anchor
- Nolan's Cross
- Grid Line

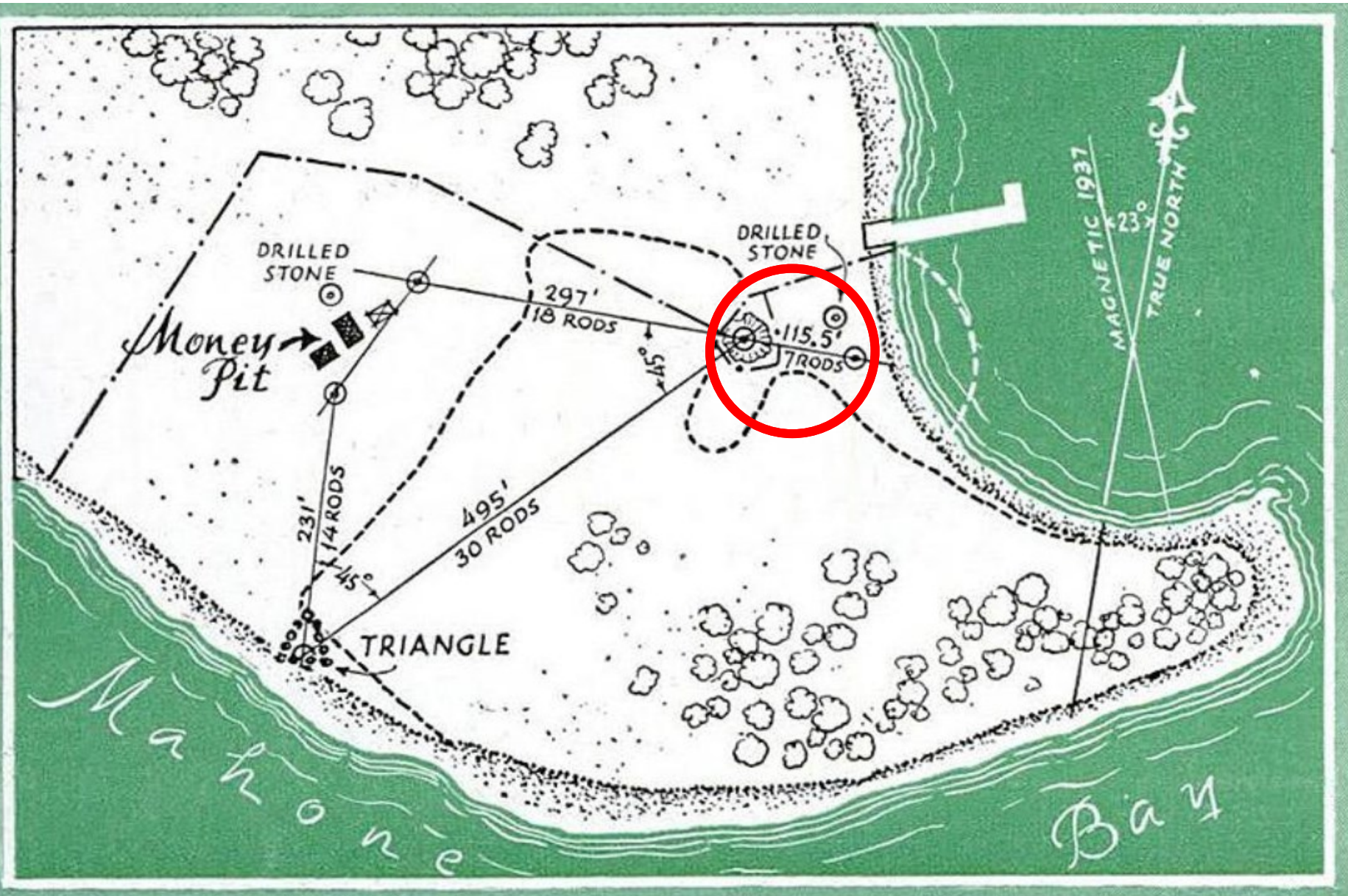




NEW DEVELOPMENTS ADD TO MYSTERY

How landmarks on Oak Island agree with those on the pirate map. From a fixed point on a line between the two drilled stones, searchers were led to discover a triangle of stones, which in turn pointed to the money pit. Bearings and distances matched the cryptic directions on the old treasure chart

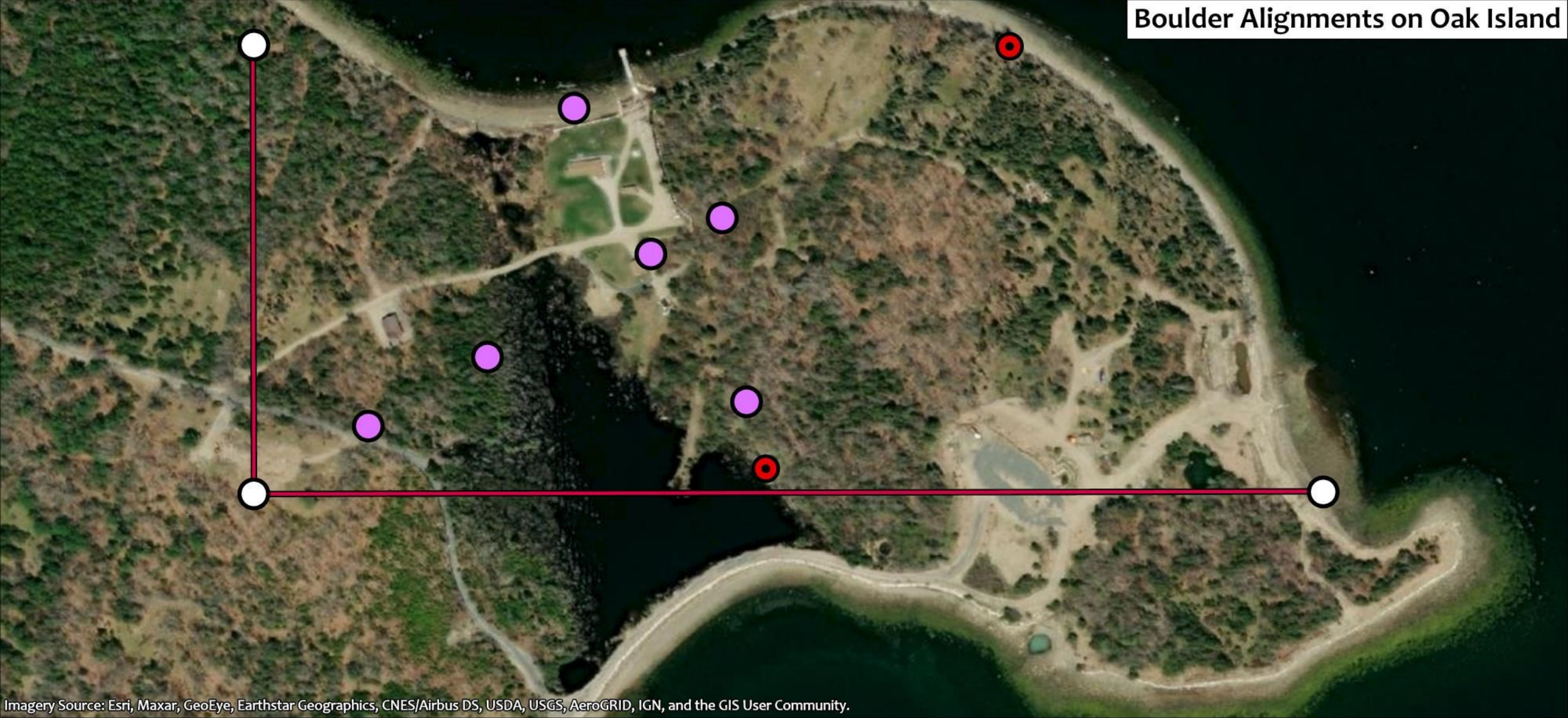
Popular Science (June 1939), p109



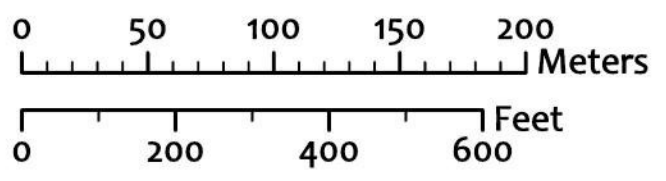
NEW DEVELOPMENTS ADD TO MYSTERY

How landmarks on Oak Island agree with those on the pirate map. From a fixed point on a line between the two drilled stones, searchers were led to discover a triangle of stones, which in turn pointed to the money pit. Bearings and distances matched the cryptic directions on the old treasure chart

Boulder Alignments on Oak Island



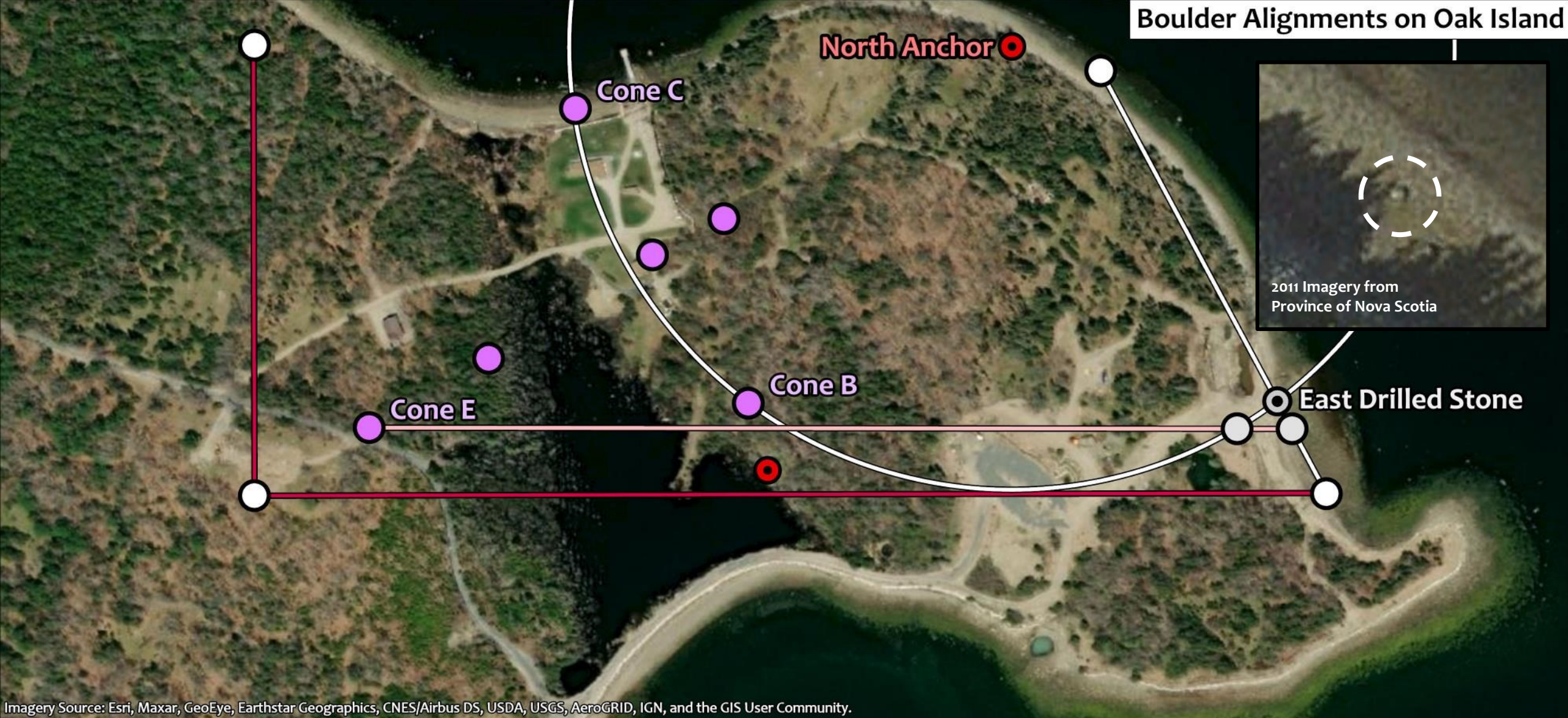
Imagery Source: Esri, Maxar, GeoEye, Earthstar Geographics, CNES/Airbus DS, USDA, USGS, AeroGRID, IGN, and the GIS User Community.



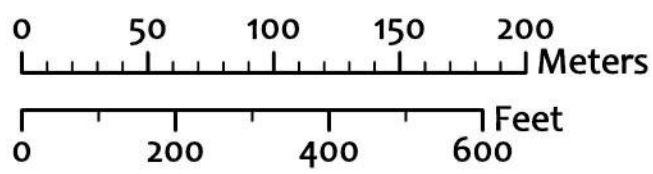
-  Anchor
-  Nolan's Cross
-  Boulder
-  Grid Line



Boulder Alignments on Oak Island

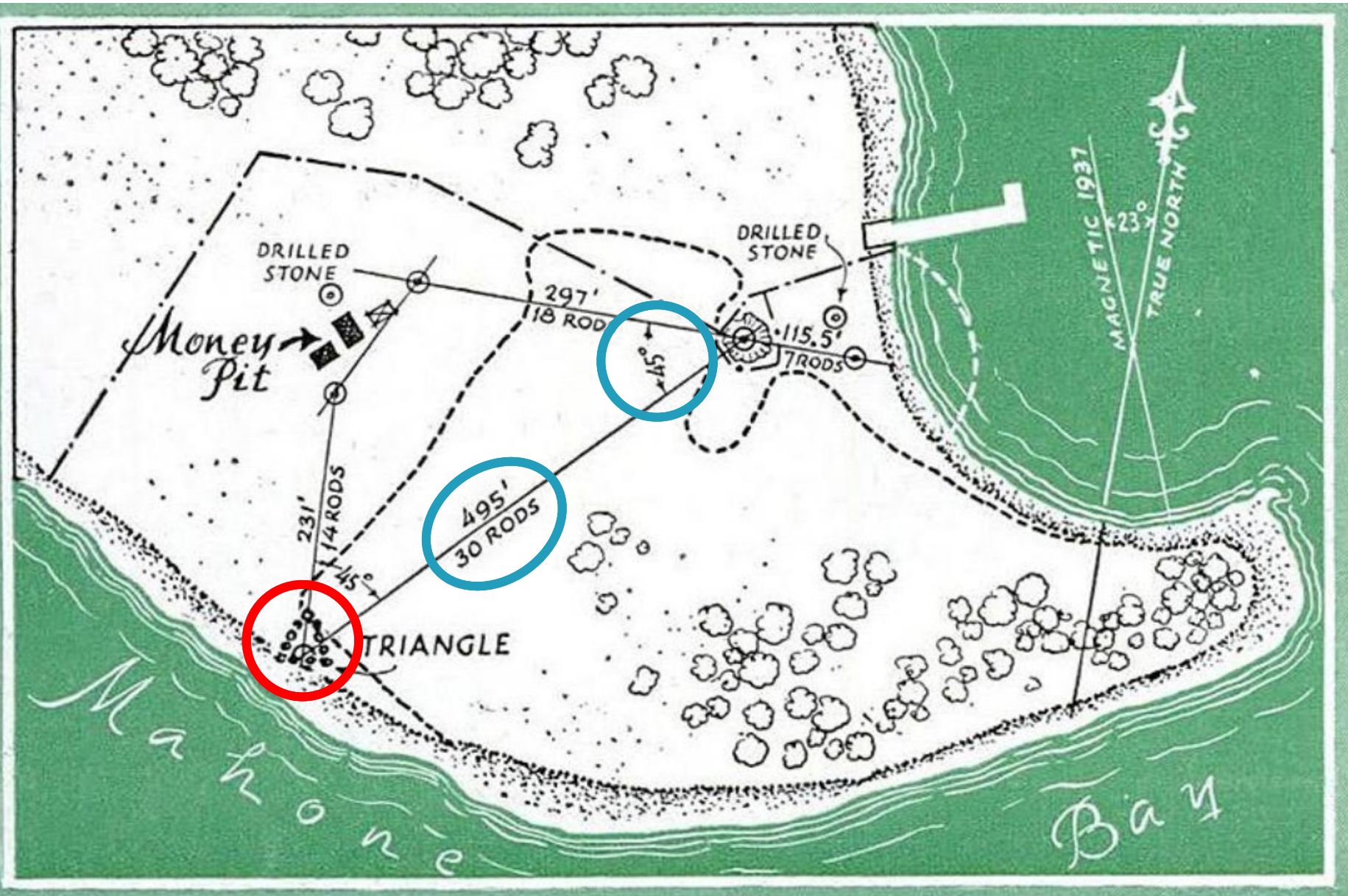


Imagery Source: Esri, Maxar, GeoEye, Earthstar Geographics, CNES/Airbus DS, USDA, USGS, AeroGRID, IGN, and the GIS User Community.



- Anchor
- Boulder
- Nolan's Cross
- Lost Drilled Stone
- Lost Boulder
- Grid Line

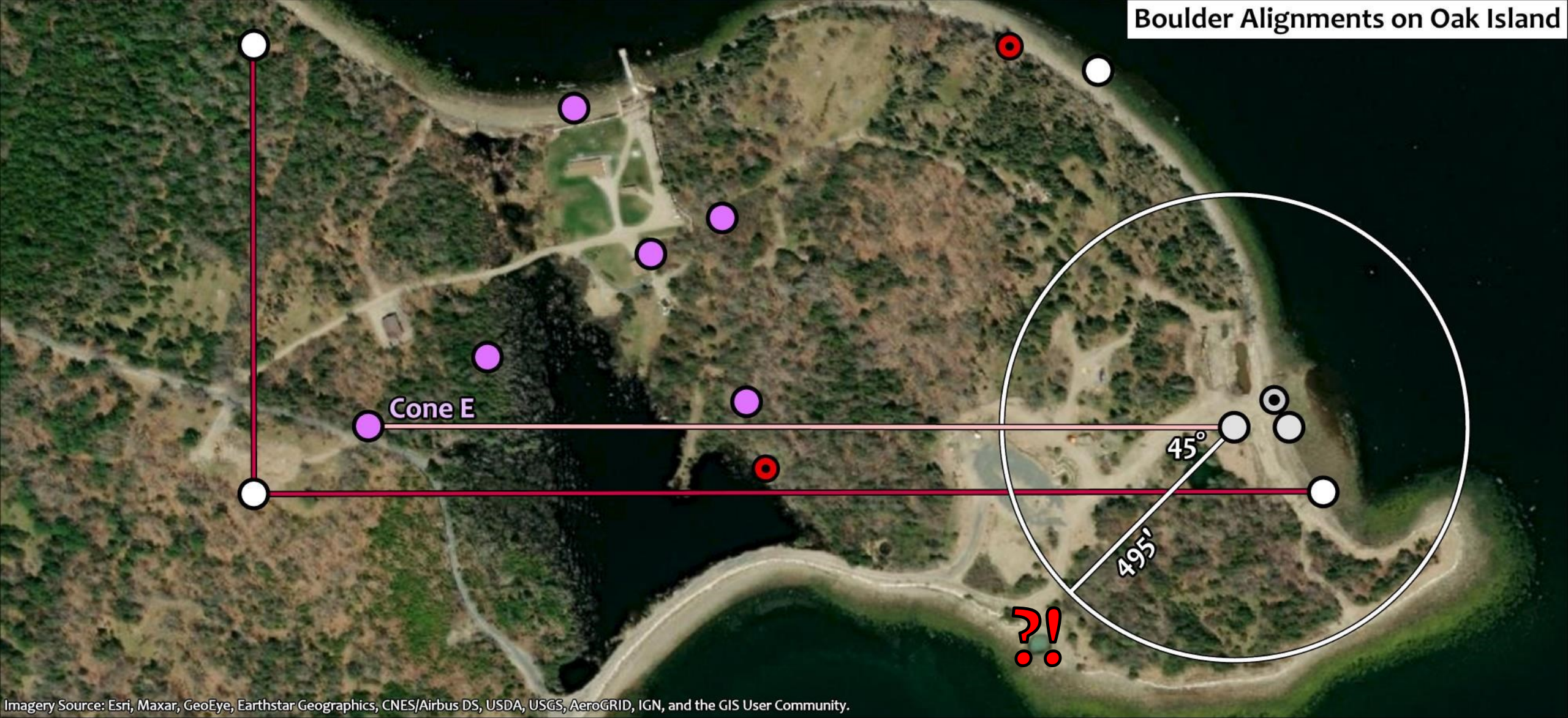




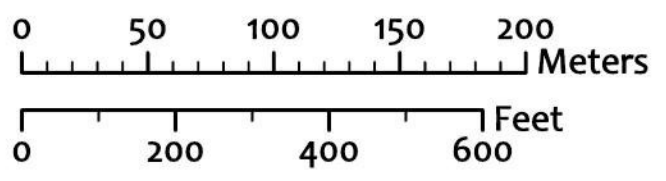
NEW DEVELOPMENTS ADD TO MYSTERY

How landmarks on Oak Island agree with those on the pirate map. From a fixed point on a line between the two drilled stones, searchers were led to discover a triangle of stones, which in turn pointed to the money pit. Bearings and distances matched the cryptic directions on the old treasure chart

Boulder Alignments on Oak Island

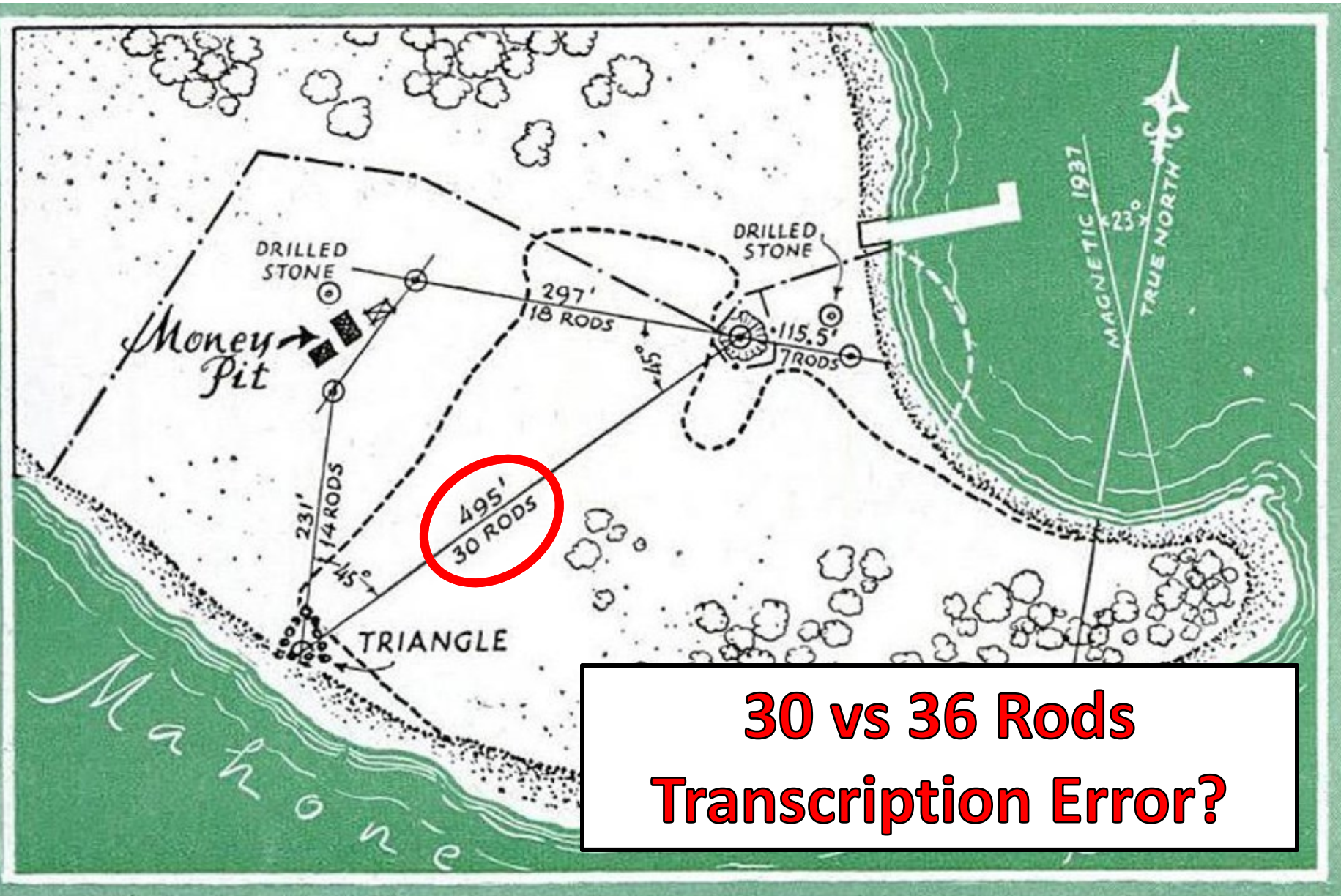


Imagery Source: Esri, Maxar, GeoEye, Earthstar Geographics, CNES/Airbus DS, USDA, USGS, AeroGRID, IGN, and the GIS User Community.



- Anchor
- Boulder
- Nolan's Cross
- Lost Drilled Stone
- Lost Boulder
- Grid Line





**30 vs 36 Rods
Transcription Error?**

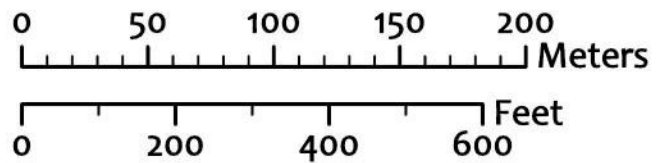
**NEW DEVELOPMENTS
ADD TO MYSTERY**

How landmarks on Oak Island agree with those on the pirate map. From a fixed point on a line between the two drilled stones, searchers were led to discover a triangle of stones, which in turn pointed to the money pit. Bearings and distances matched the cryptic directions on the old treasure chart

Boulder Alignments on Oak Island



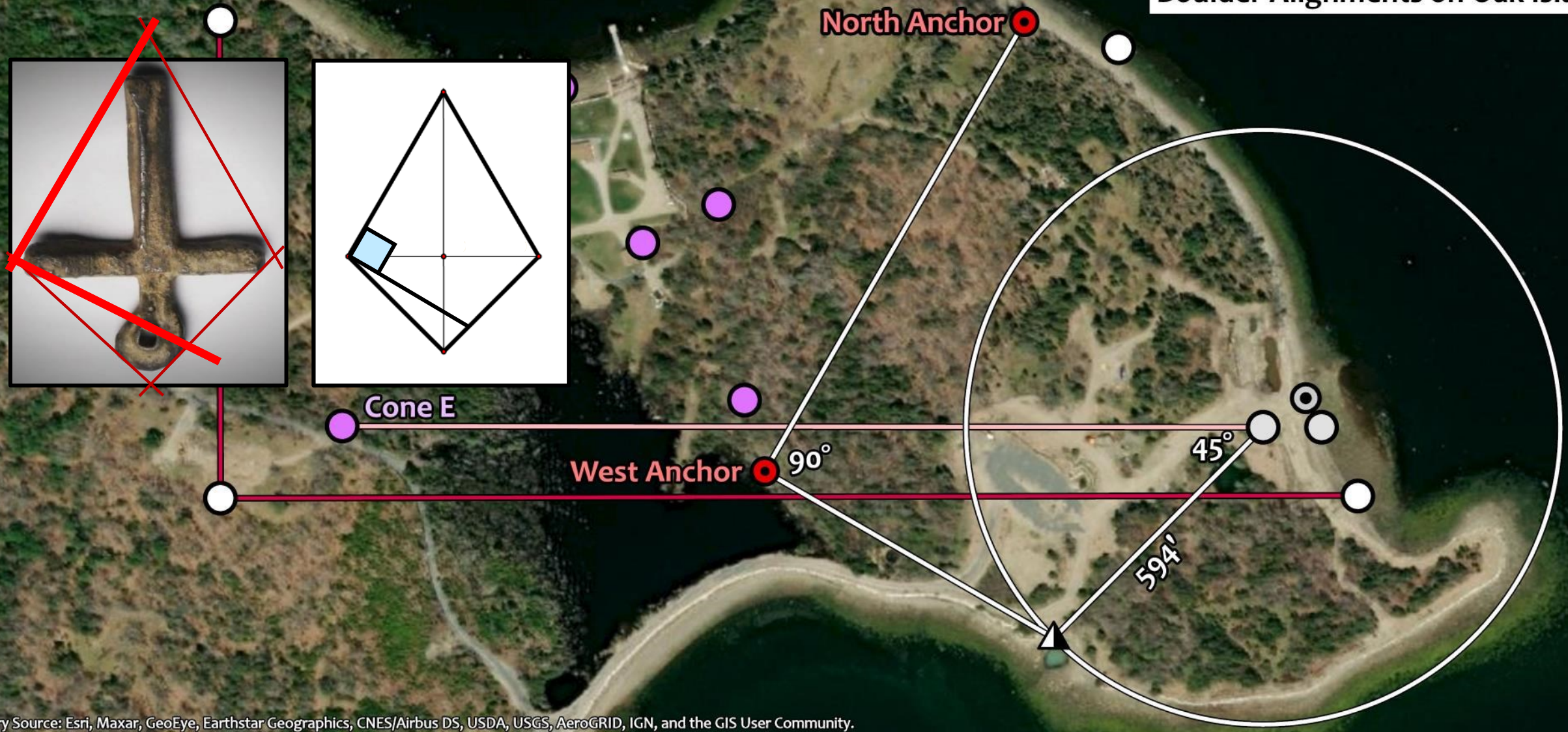
Imagery Source: Esri, Maxar, GeoEye, Earthstar Geographics, CNES/Airbus DS, USDA, USGS, AeroGRID, IGN, and the GIS User Community.



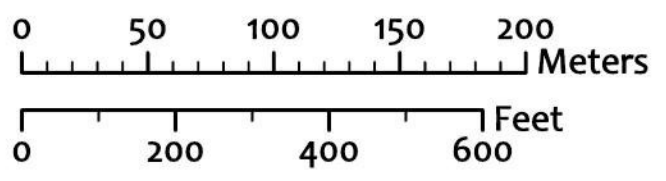
- Anchor
- Boulder
- Nolan's Cross
- ⊙ Lost Drilled Stone
- Lost Boulder
- ▲ Stone Triangle
- Grid Line



Boulder Alignments on Oak Island

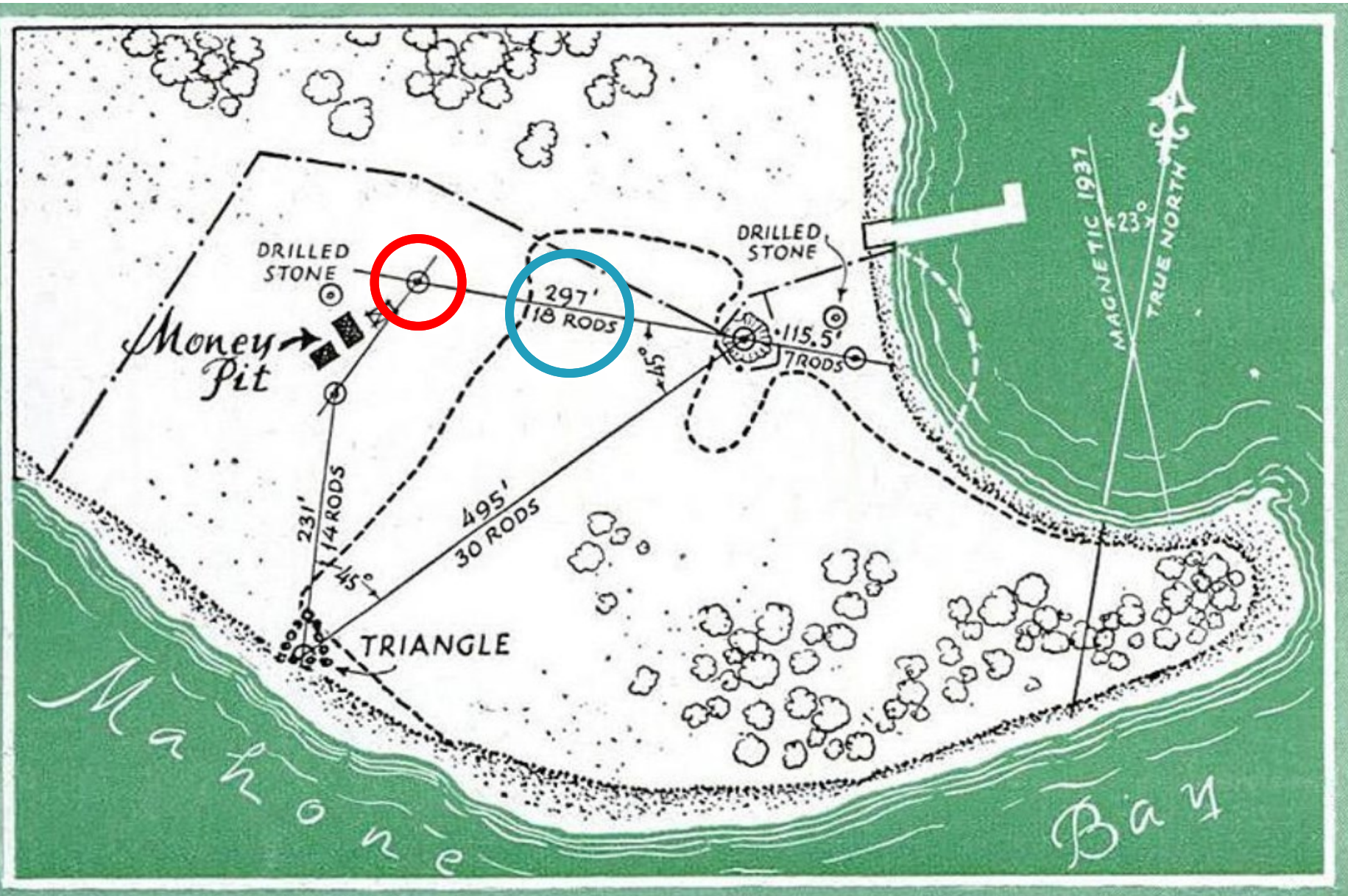


Imagery Source: Esri, Maxar, GeoEye, Earthstar Geographics, CNES/Airbus DS, USDA, USGS, AeroGRID, IGN, and the GIS User Community.



- Anchor
- Boulder
- Nolan's Cross
- Lost Drilled Stone
- Lost Boulder
- Stone Triangle
- Grid Line





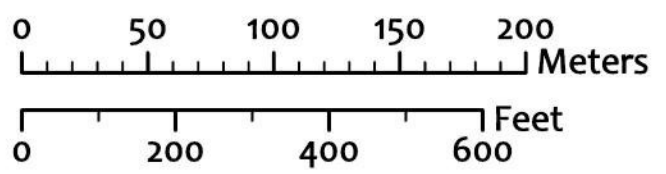
NEW DEVELOPMENTS ADD TO MYSTERY

How landmarks on Oak Island agree with those on the pirate map. From a fixed point on a line between the two drilled stones, searchers were led to discover a triangle of stones, which in turn pointed to the money pit. Bearings and distances matched the cryptic directions on the old treasure chart

Boulder Alignments on Oak Island

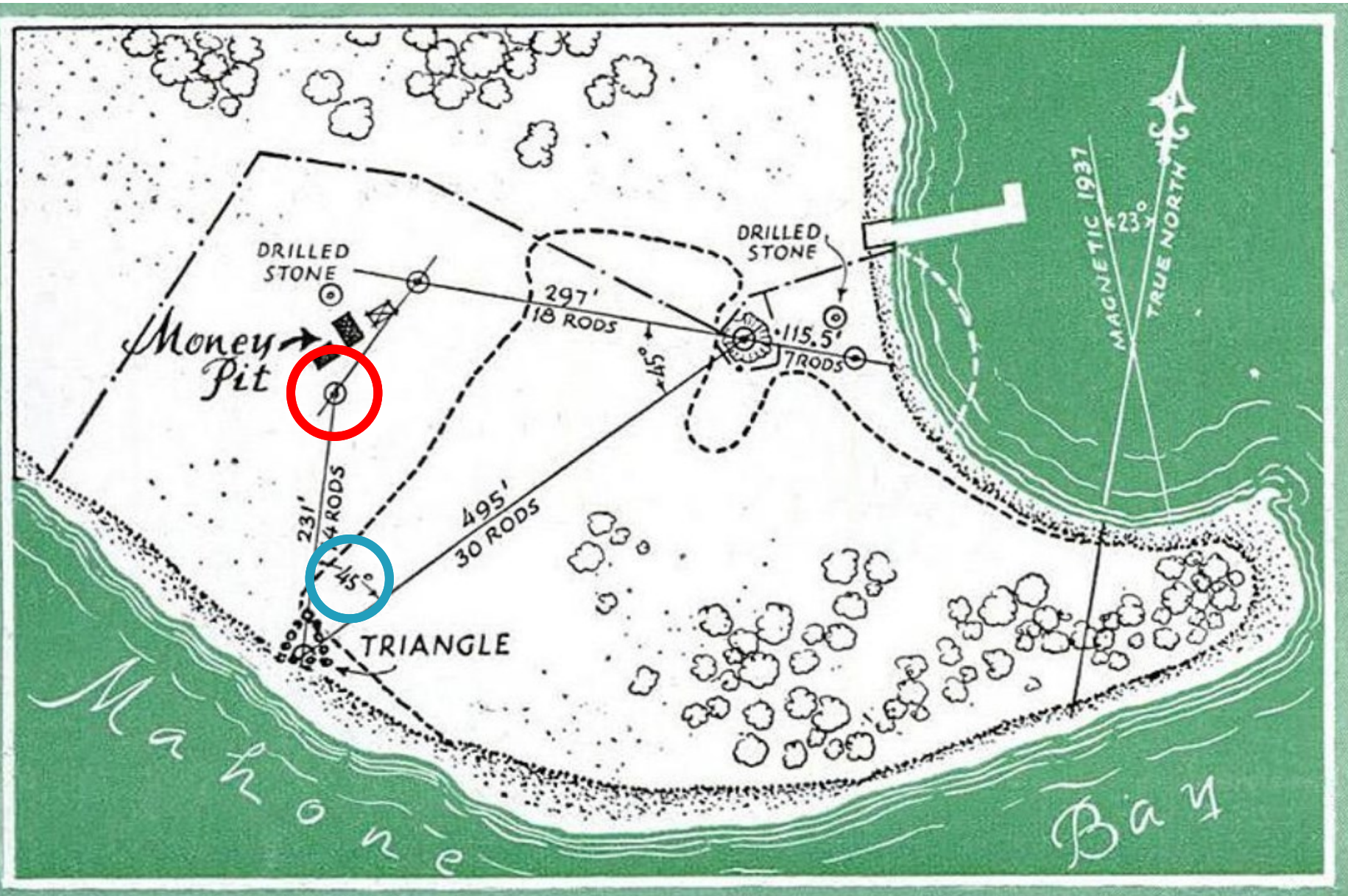


Imagery Source: Esri, Maxar, GeoEye, Earthstar Geographics, CNES/Airbus DS, USDA, USGS, AeroGRID, IGN, and the GIS User Community.



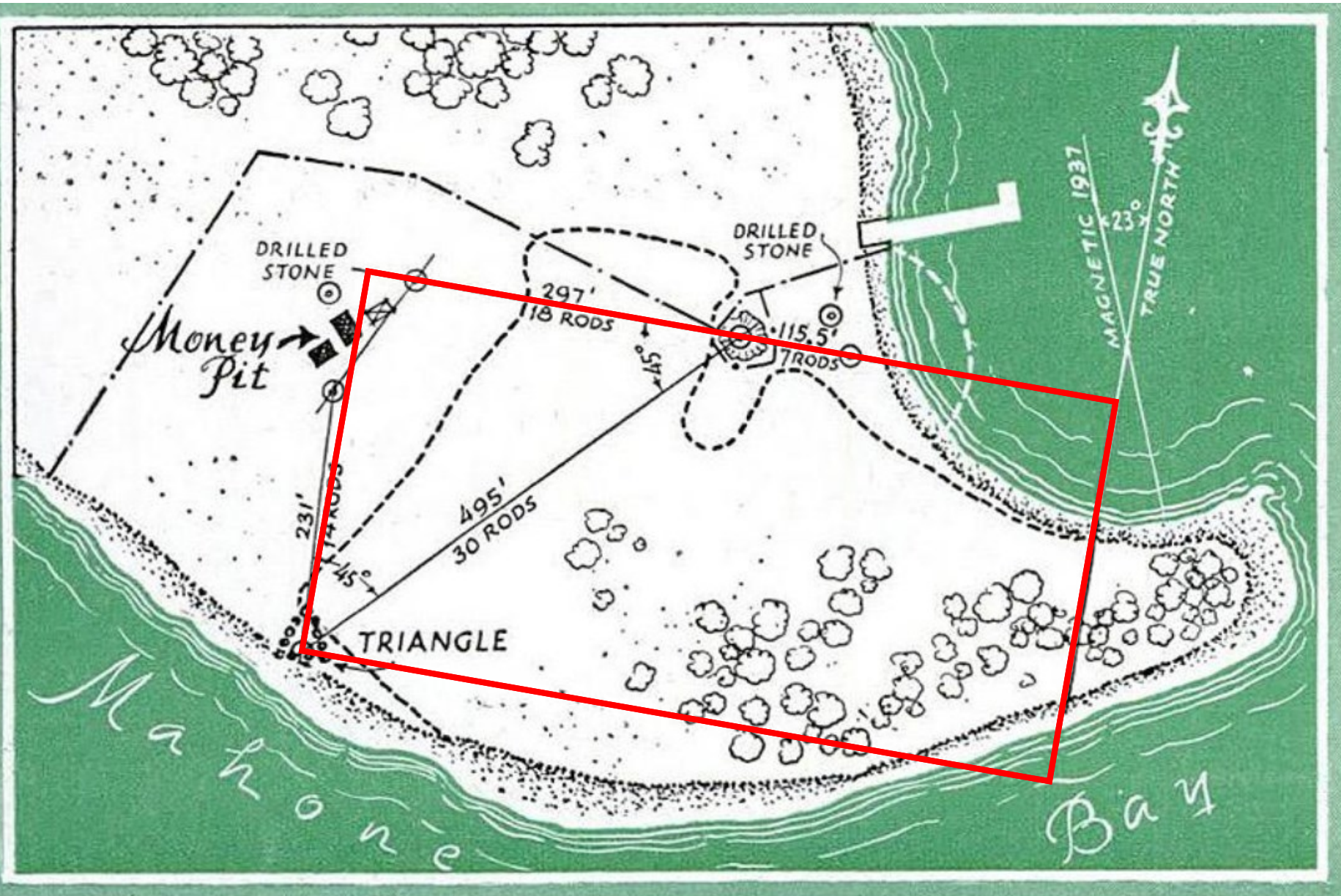
- Anchor
- Boulder
- Nolan's Cross
- Lost Drilled Stone
- Lost Boulder
- Stone Triangle
- Grid Line





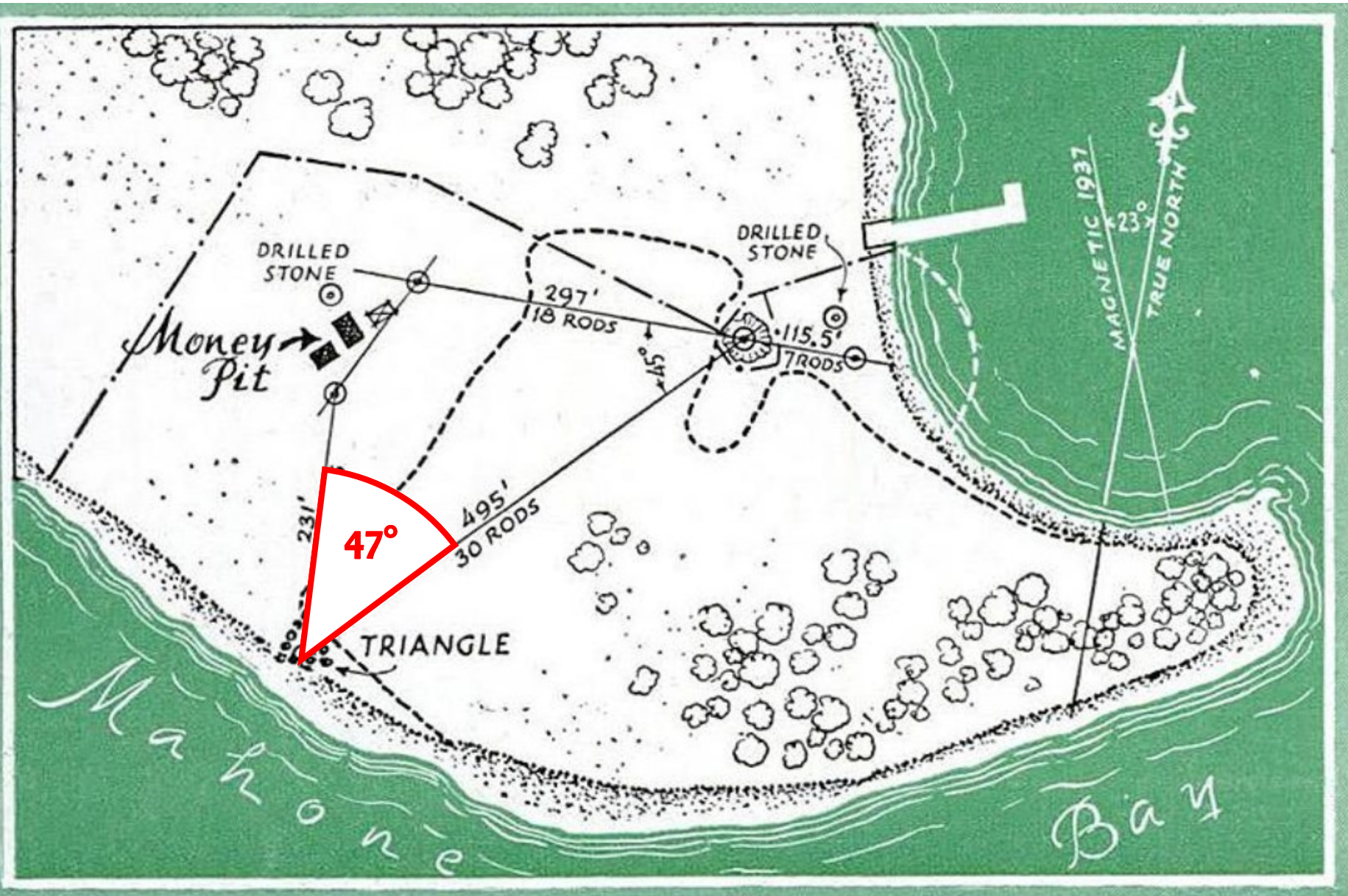
NEW DEVELOPMENTS ADD TO MYSTERY

How landmarks on Oak Island agree with those on the pirate map. From a fixed point on a line between the two drilled stones, searchers were led to discover a triangle of stones, which in turn pointed to the money pit. Bearings and distances matched the cryptic directions on the old treasure chart



NEW DEVELOPMENTS ADD TO MYSTERY

How landmarks on Oak Island agree with those on the pirate map. From a fixed point on a line between the two drilled stones, searchers were led to discover a triangle of stones, which in turn pointed to the money pit. Bearings and distances matched the cryptic directions on the old treasure chart



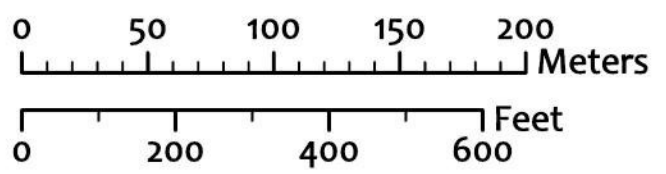
NEW DEVELOPMENTS ADD TO MYSTERY

How landmarks on Oak Island agree with those on the pirate map. From a fixed point on a line between the two drilled stones, searchers were led to discover a triangle of stones, which in turn pointed to the money pit. Bearings and distances matched the cryptic directions on the old treasure chart

Boulder Alignments on Oak Island



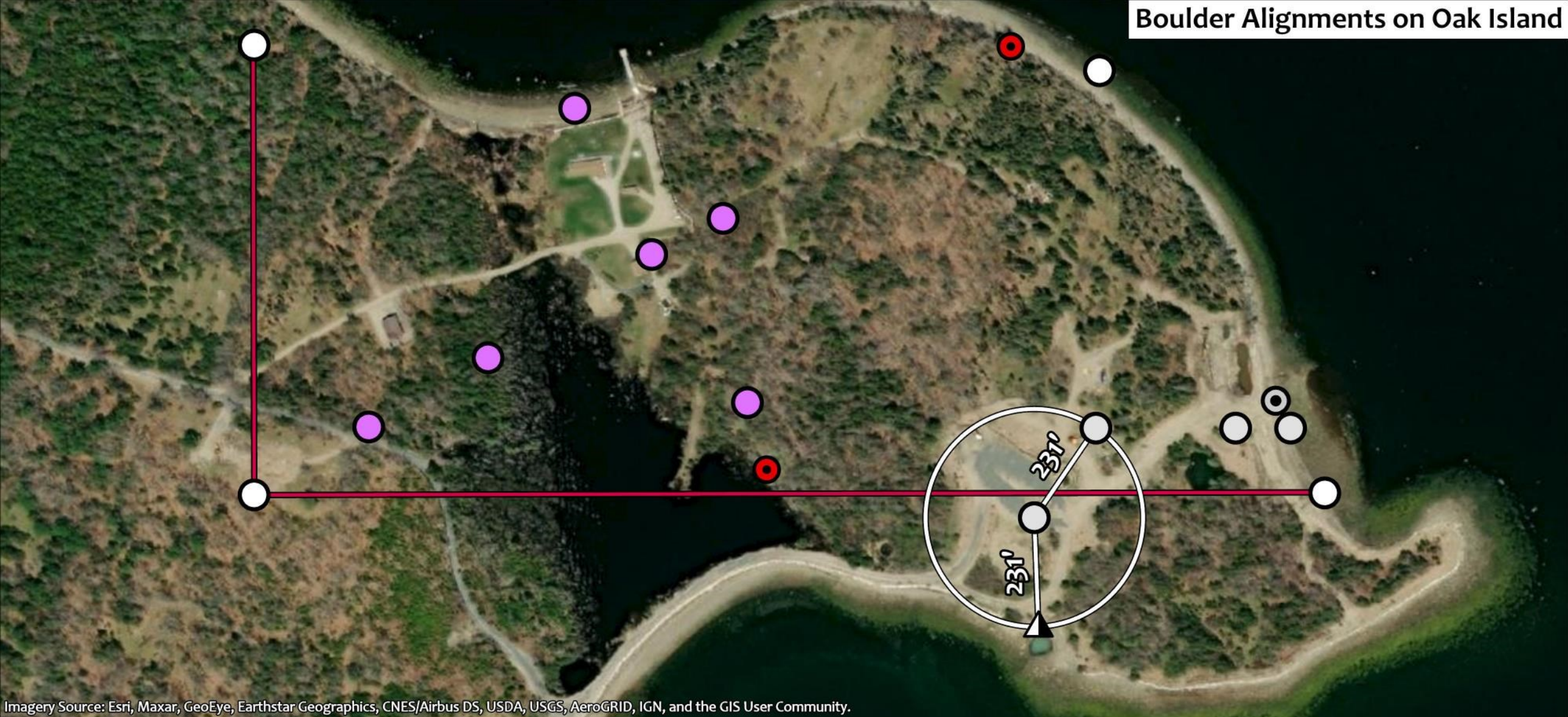
Imagery Source: Esri, Maxar, GeoEye, Earthstar Geographics, CNES/Airbus DS, USDA, USGS, AeroGRID, IGN, and the GIS User Community.



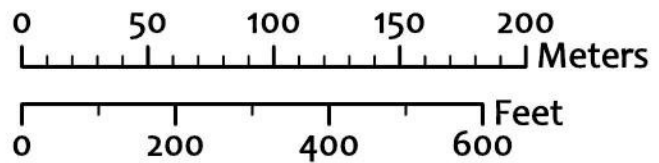
- Anchor
- Boulder
- Nolan's Cross
- Lost Drilled Stone
- Lost Boulder
- Stone Triangle
- Grid Line



Boulder Alignments on Oak Island

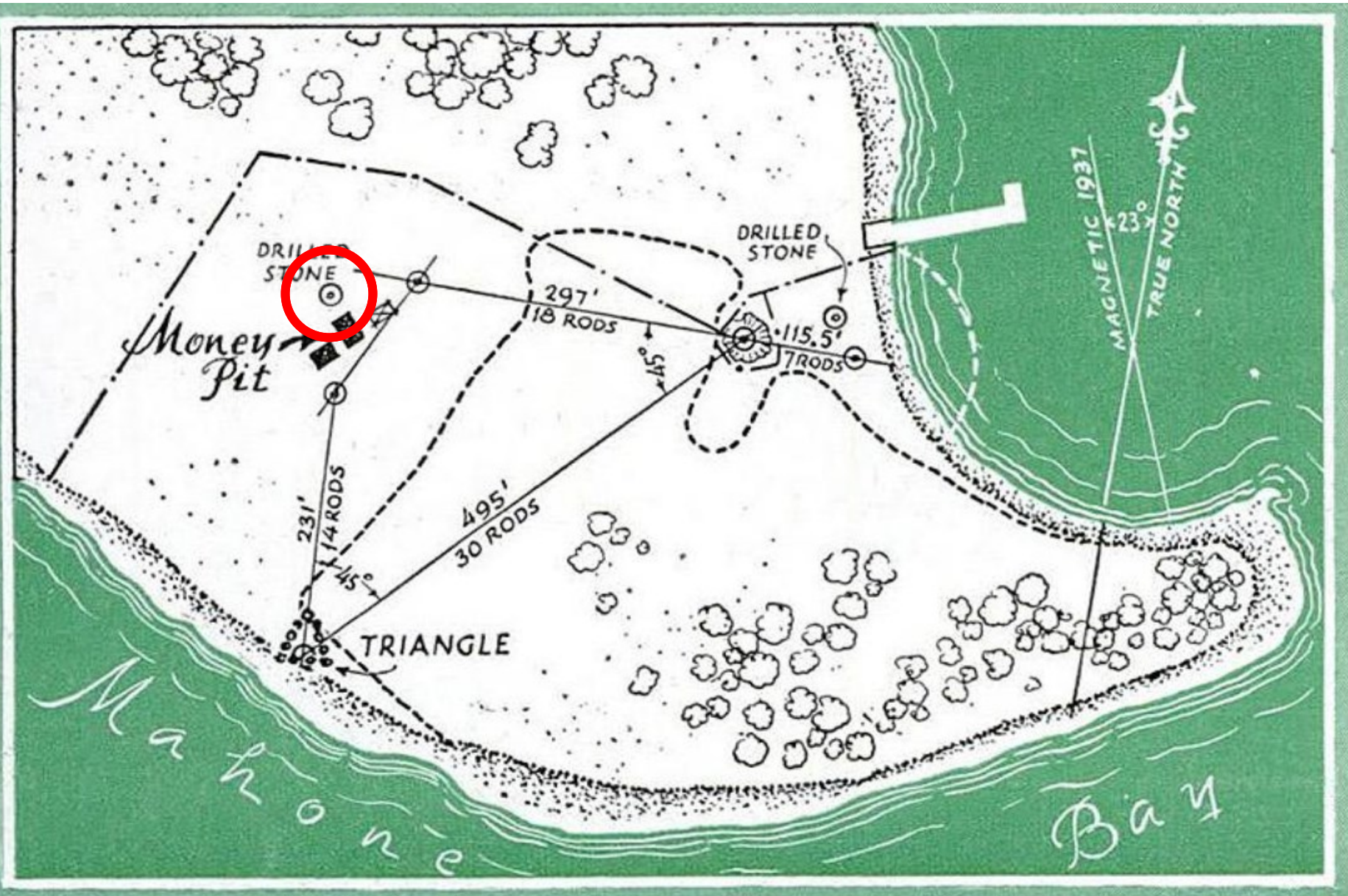


Imagery Source: Esri, Maxar, GeoEye, Earthstar Geographics, CNES/Airbus DS, USDA, USGS, AeroGRID, IGN, and the GIS User Community.



- Anchor
- Boulder
- Nolan's Cross
- Lost Drilled Stone
- Lost Boulder
- Stone Triangle
- Grid Line

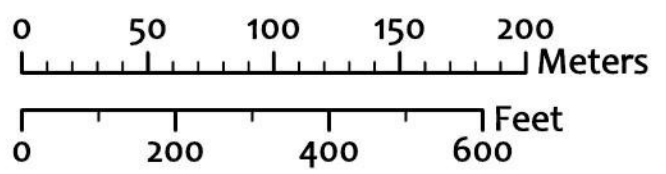




NEW DEVELOPMENTS ADD TO MYSTERY

How landmarks on Oak Island agree with those on the pirate map. From a fixed point on a line between the two drilled stones, searchers were led to discover a triangle of stones, which in turn pointed to the money pit. Bearings and distances matched the cryptic directions on the old treasure chart

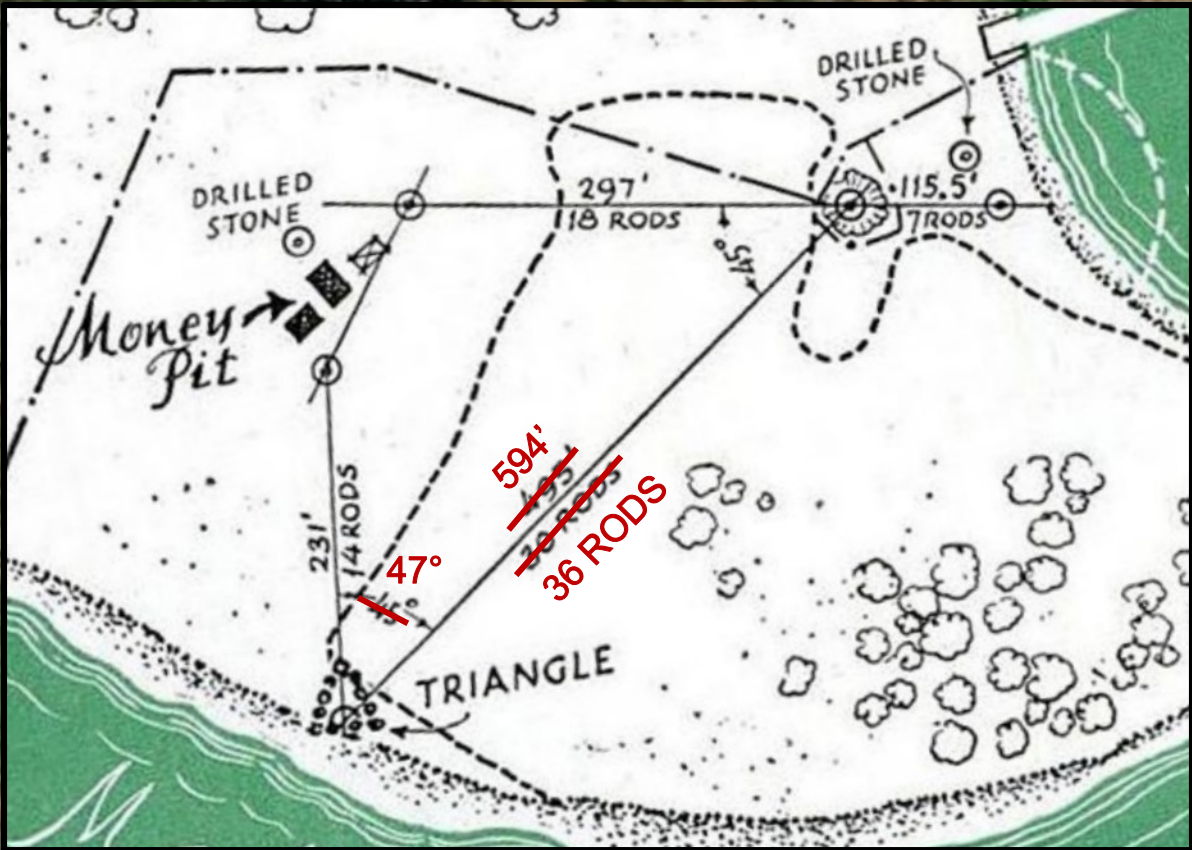
Boulder Alignments on Oak Island



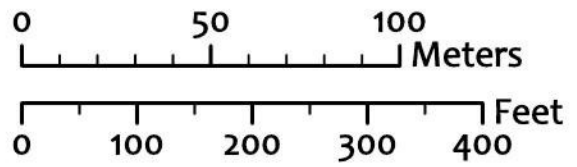
- Anchor
- Boulder
- Nolan's Cross
- Lost Drilled Stone
- Lost Boulder
- Stone Triangle
- Grid Line



Popular Science (June 1939), p109



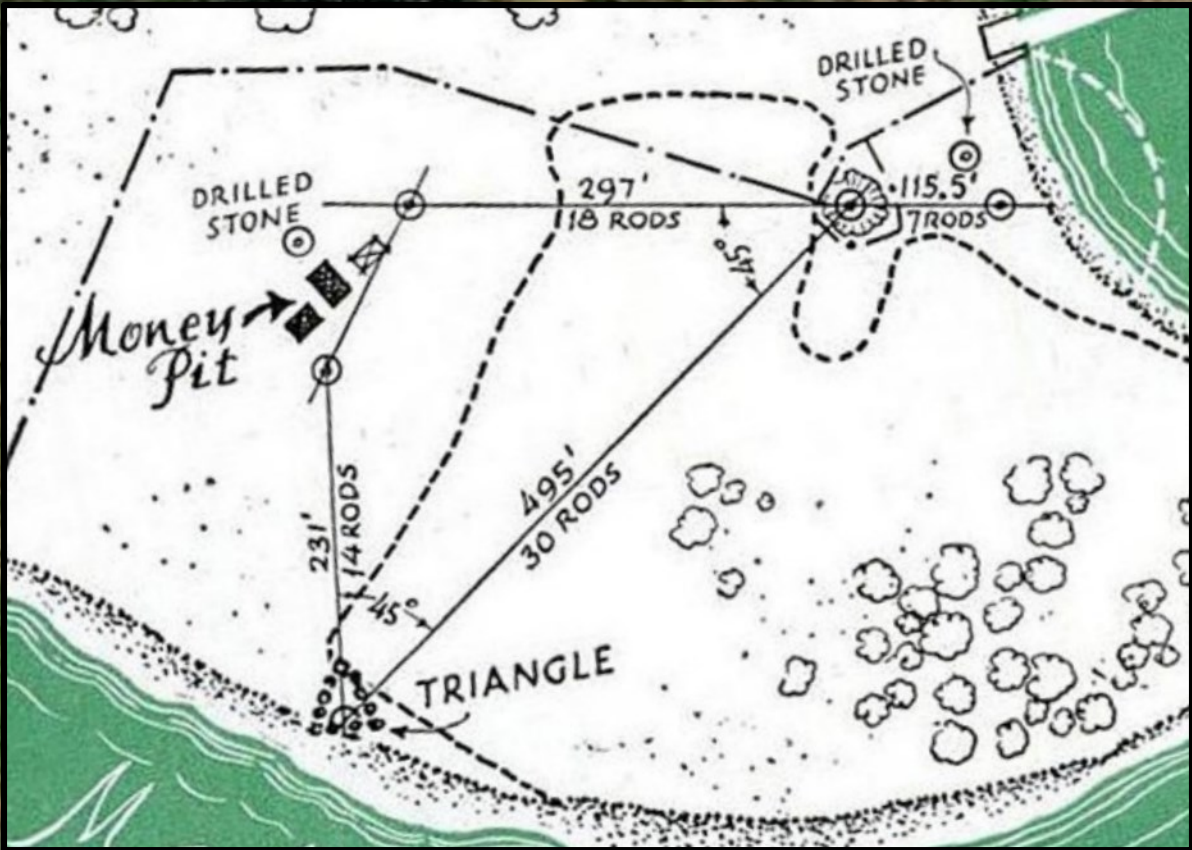
Imagery Source: Esri, Maxar, GeoEye, Earthstar Geographics, CNES/Airbus DS, USDA, USGS, AeroGRID, IGN, and the GIS User Community.



- Lost Drilled Stone
- Lost Boulder
- ▲ Stone Triangle

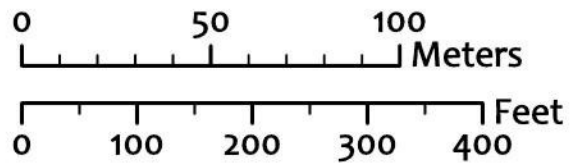


Popular Science (June 1939), p109



"U" Shaped Structure

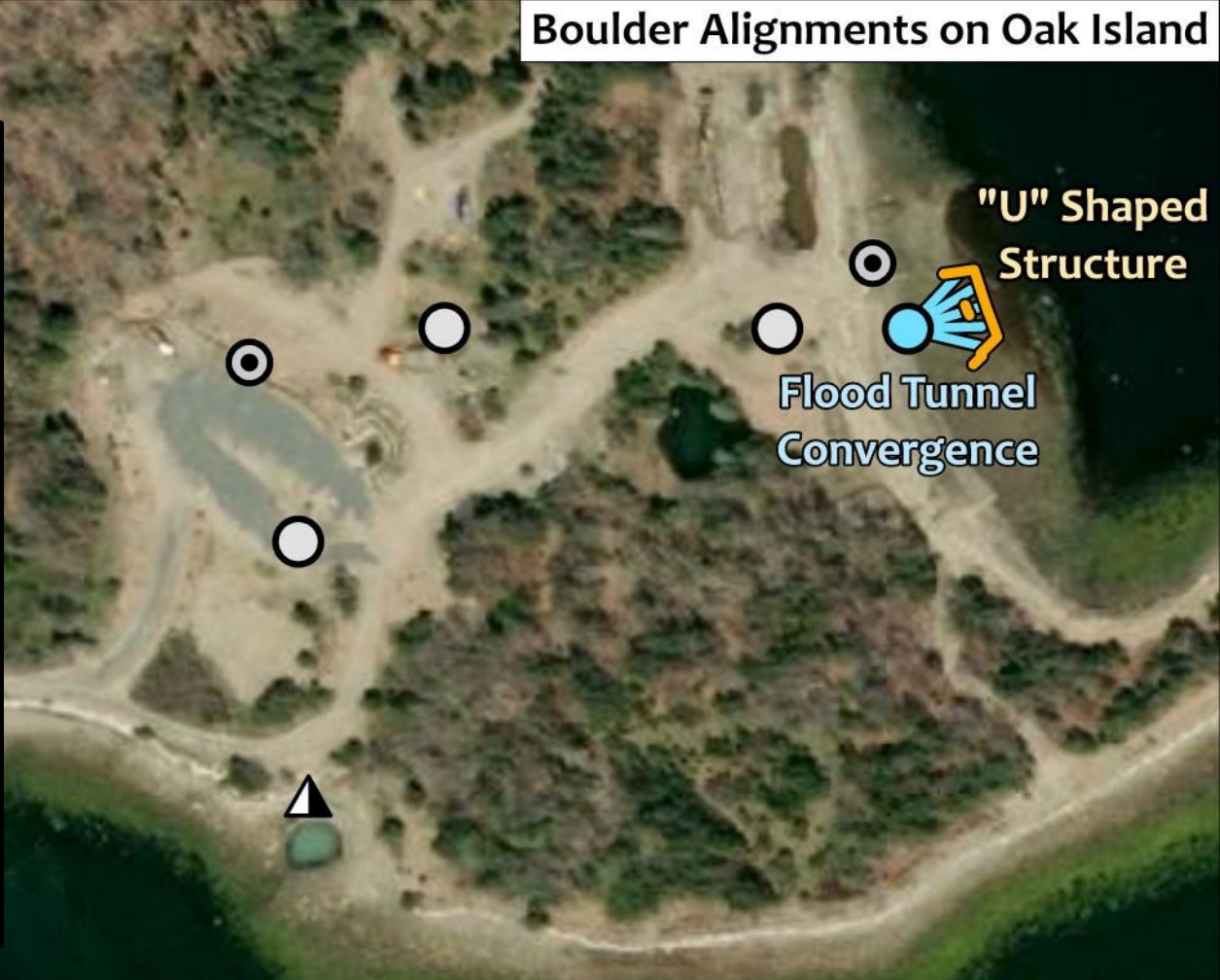
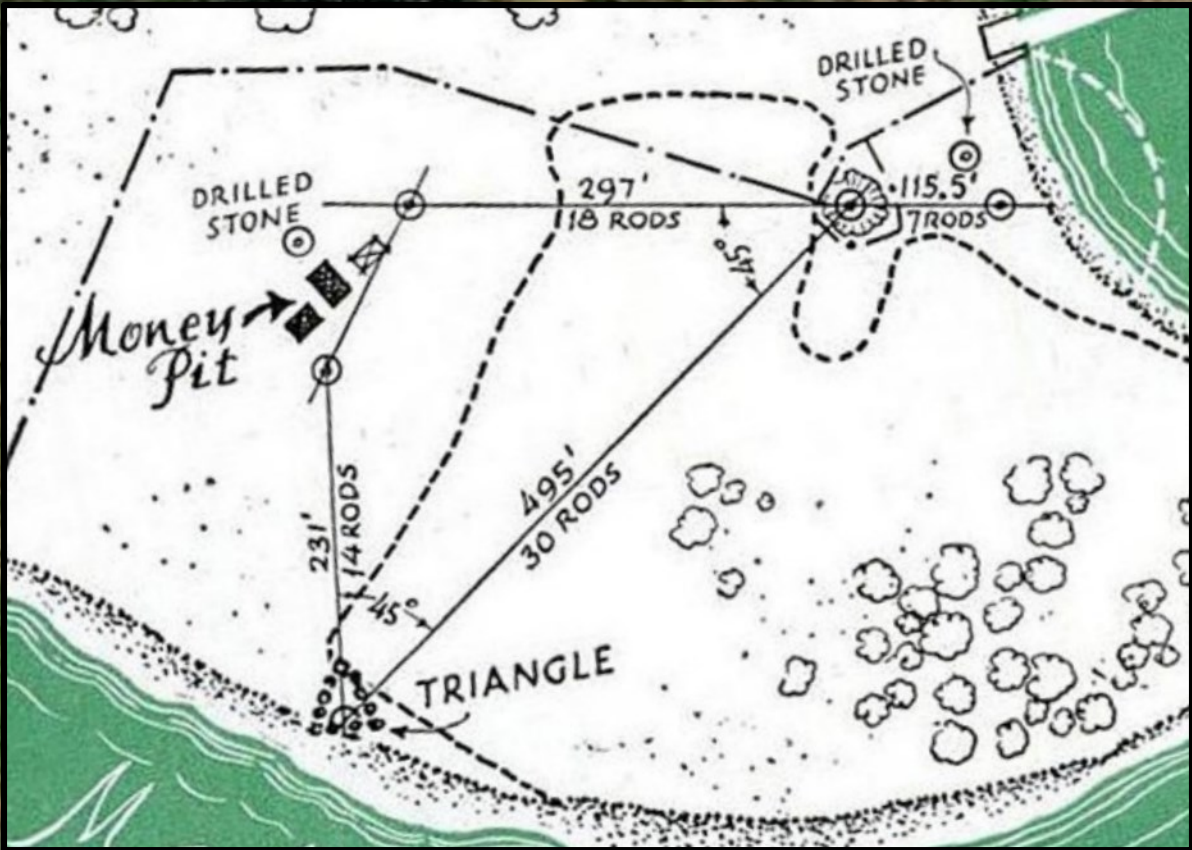
Imagery Source: Esri, Maxar, GeoEye, Earthstar Geographics, CNES/Airbus DS, USDA, USGS, AeroGRID, IGN, and the GIS User Community.



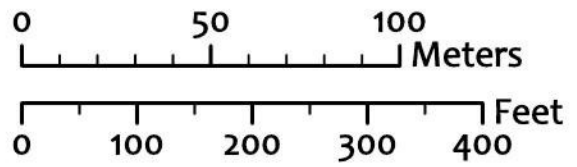
- Lost Drilled Stone
- Lost Boulder
- ▲ Stone Triangle



Popular Science (June 1939), p109



Imagery Source: Esri, Maxar, GeoEye, Earthstar Geographics, CNES/Airbus DS, USDA, USGS, AeroGRID, IGN, and the GIS User Community.



- Lost Drilled Stone
- Lost Boulder
- ▲ Stone Triangle



Visit Us at Booth 7

- Enter the drawing for the **YETI COOLER** and **KALADI** gift cards
- Free Resource Data **Camping Mugs**
- Free sparkling waters



resource
data

