

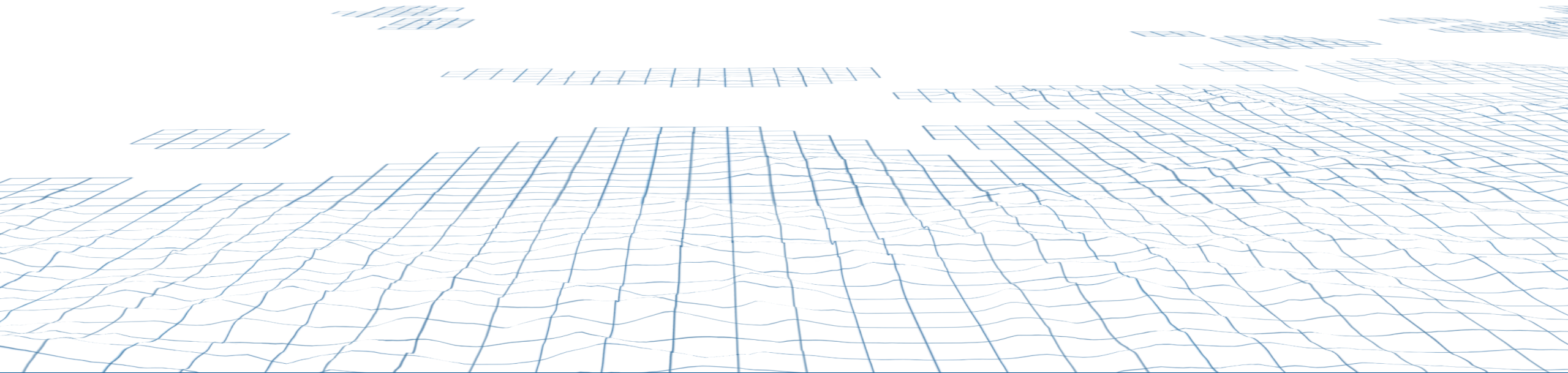


October 25, 2023

# The Data Lifecycle: Improved Efficiencies with Early Coordination

**N|V|5** GEOSPATIAL

**Andrew Herbst**





## The Data Lifecycle

Soup to Nuts



## Project Planning

Defined project areas, projections and specifications



## Data Distribution

Alaska Imagery and Elevation Portals



## Statewide Tile Index

For Statewide Lidar

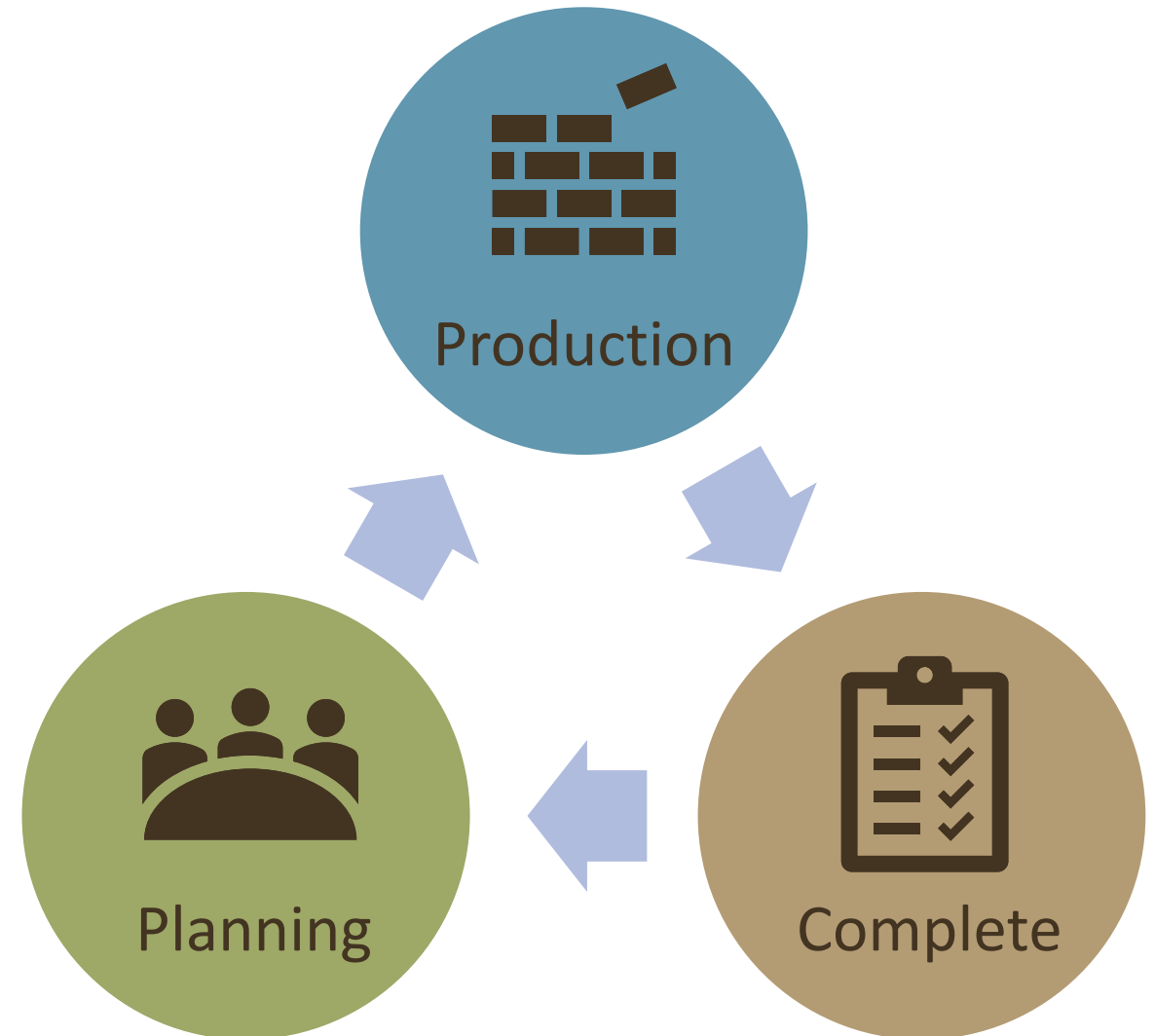


## Q&A



# The Data Lifecycle

- **Planning**
  - Insert collaboration here
- **Production**
  - Data created per specs in the plan
- **Complete**
  - Complete projects can inform future plans



# Project Planning

- FAIR Data
  - Findable
  - Accessible
  - Interoperable
  - Reusable
- Shared Project Specifications
- Convenient Delivery Formats
- Metadata Interoperability

Screenshots from AGO Imagery and Elevation Portal:  
Data Submission Procedure

**Public/Licensed Use\***  
Are there any restrictions for this data? If so, please include details in the "notes" section of this survey.

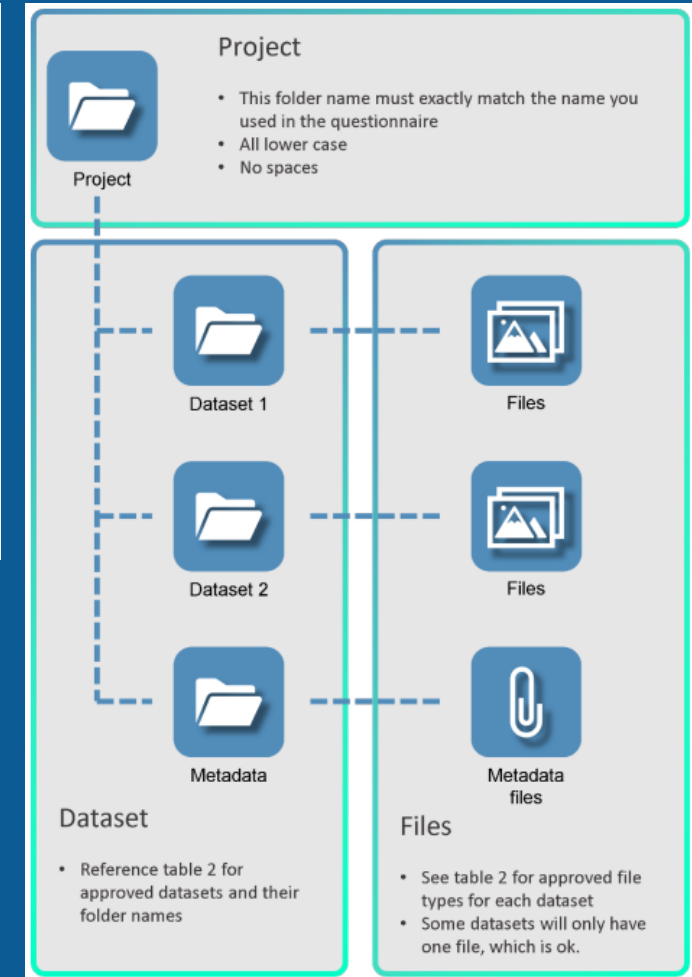
public

restricted

Horizontal Projection/Datum

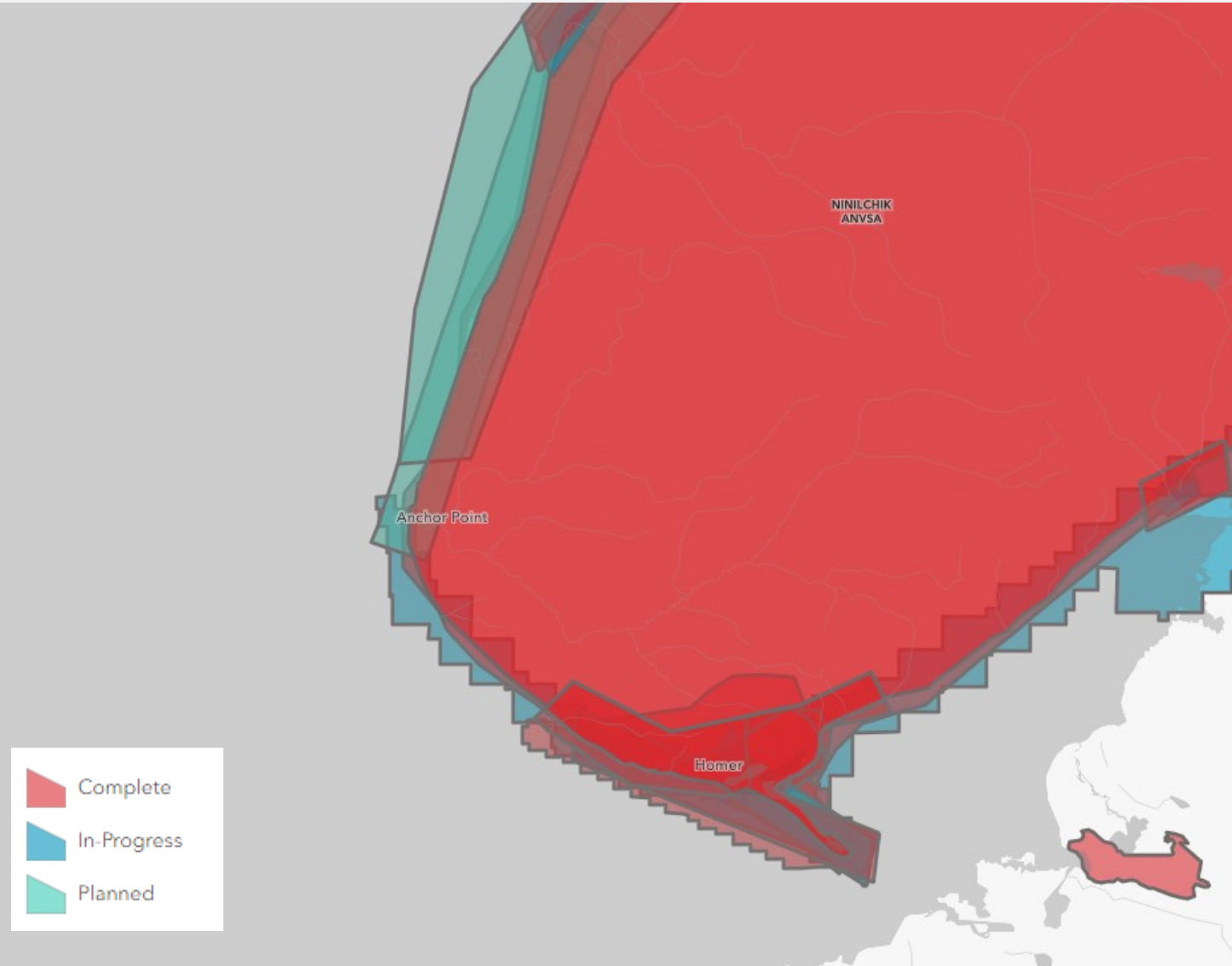
Vertical Datum (elevation)

-Please select-



# Defined Project Areas

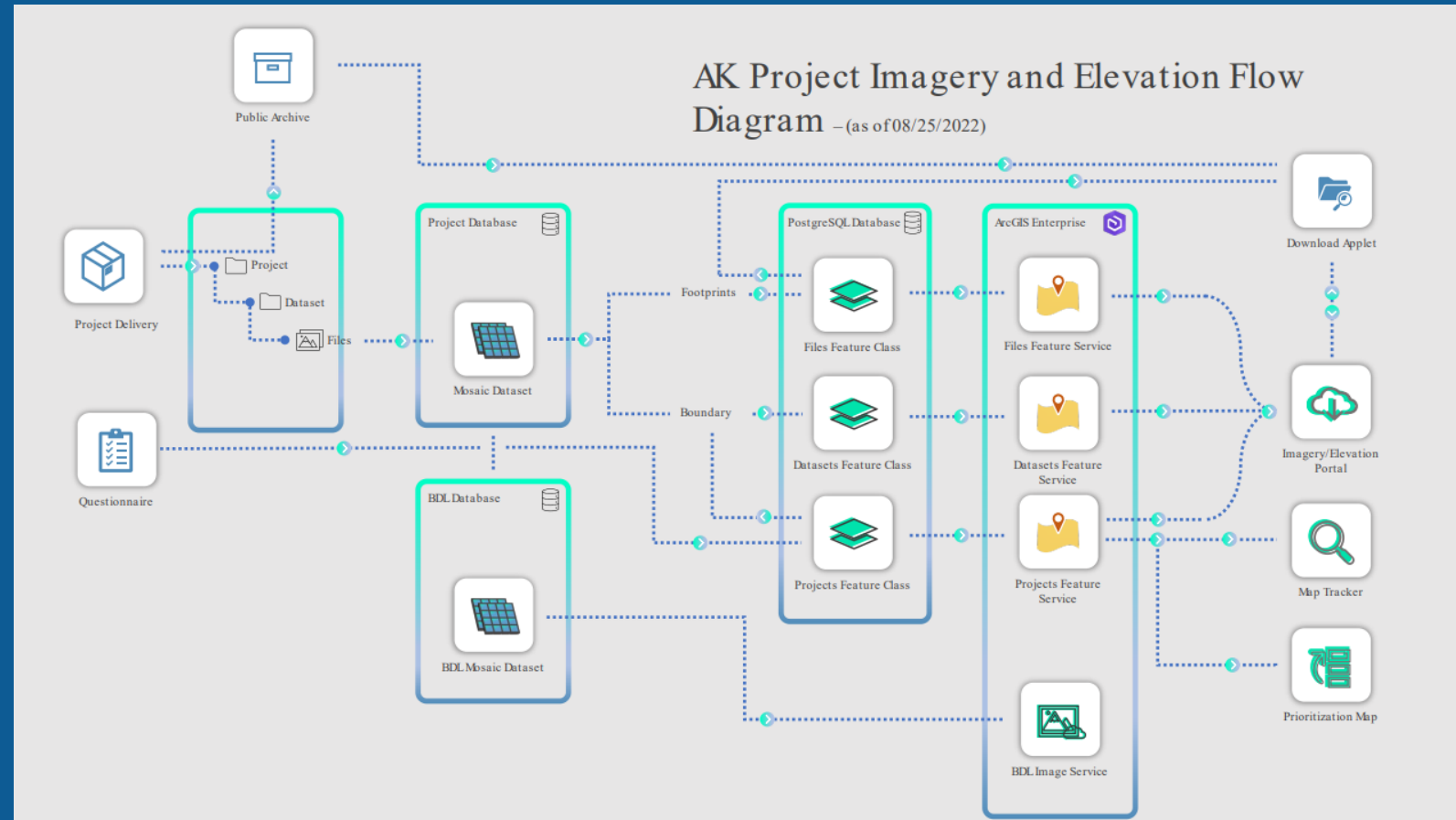
- Overlapping Project Areas
  - Opportunities for cost sharing
- Nearby project areas
  - Preventing small data gaps between separate projects
- Work toward a complete map of Alaska



# Data Distribution

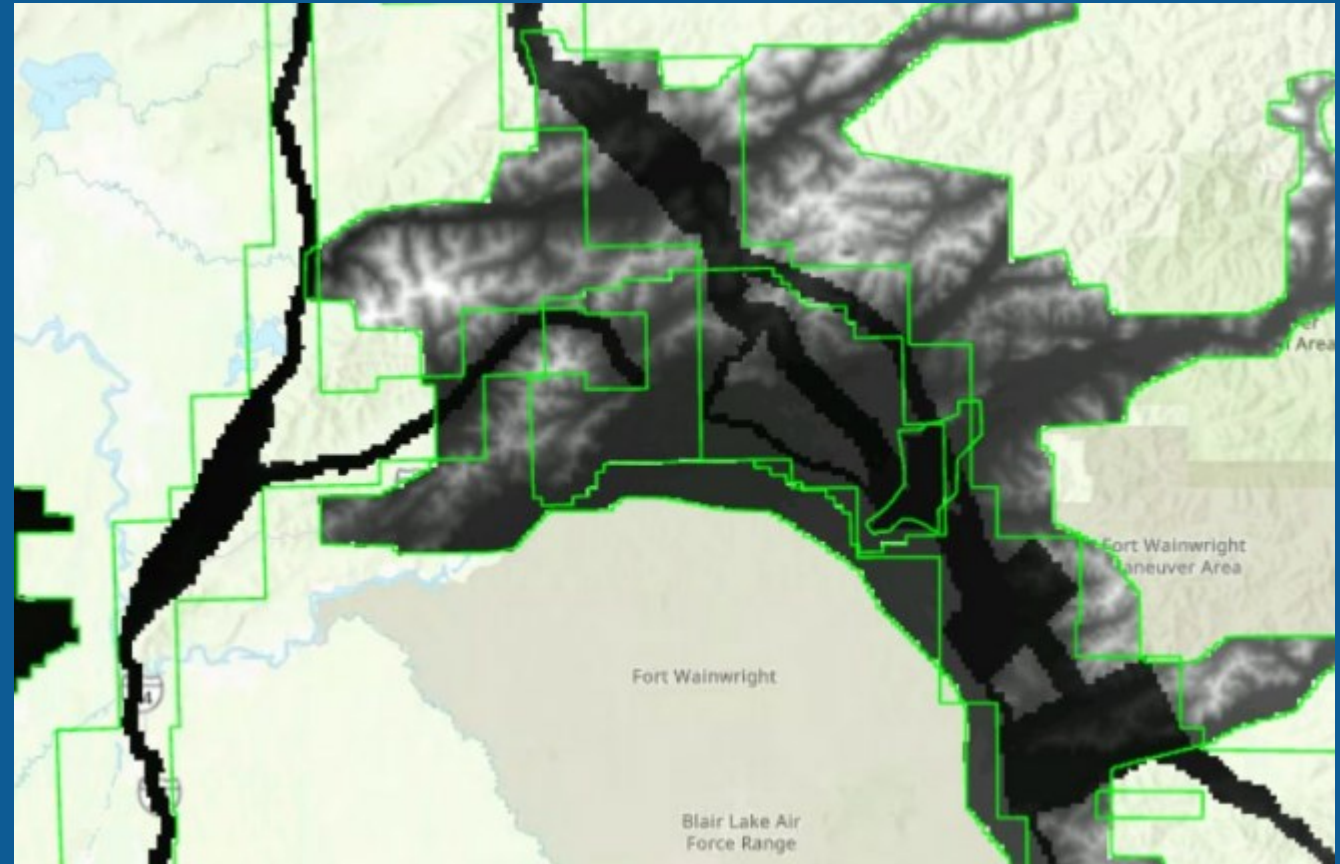
## Case Study: Alaska Imagery and Elevation Portals

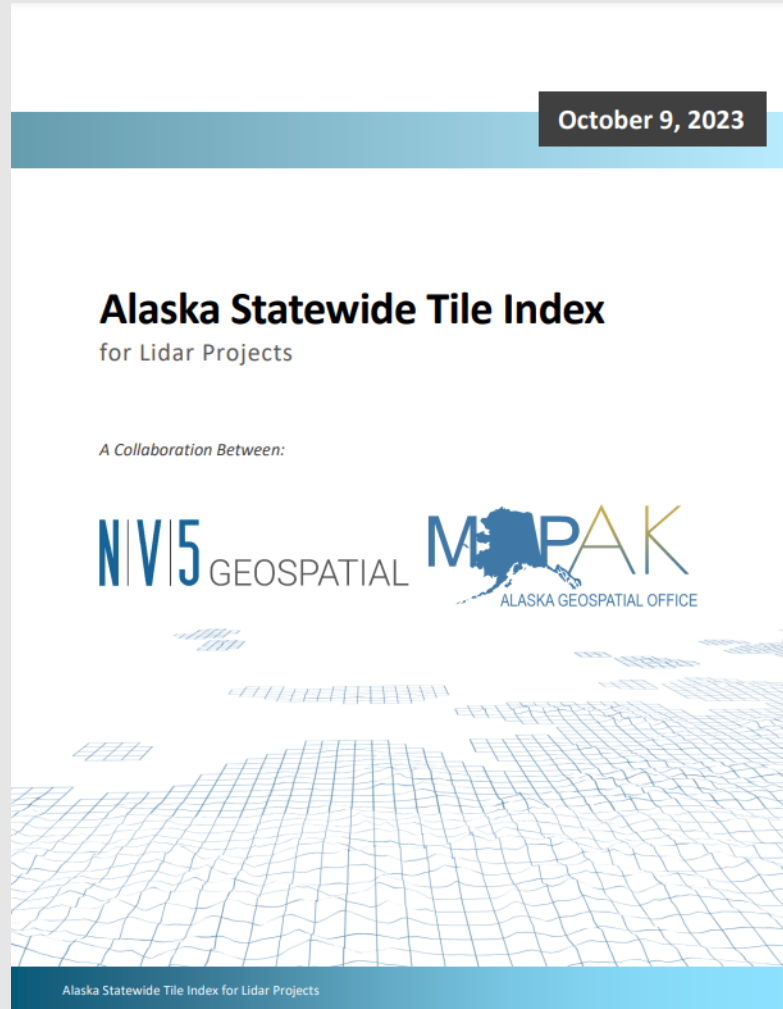
- Distribution systems can be optimized by standardized inputs
- Reorganizing data can be a lot of work
- Lots of data coming from lots of sources



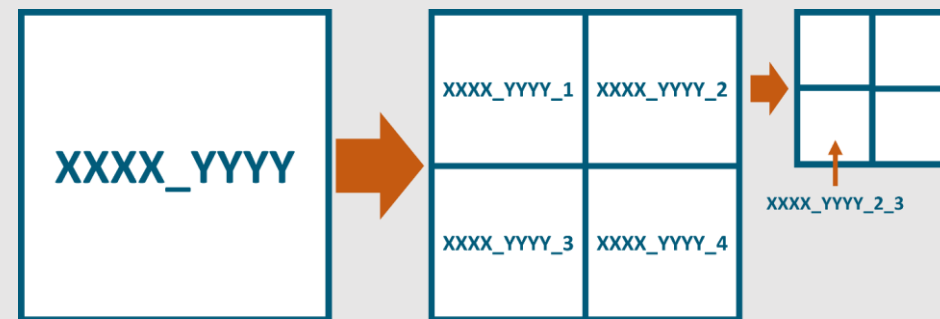
## Case Study: Alaska Imagery and Elevation Portals

- Metadata can be leveraged to drive end user applications, as long as its standardized
- Data volume for Alaska is expected to be **LARGE**
  - Even minor inefficiencies will have big downstream effects





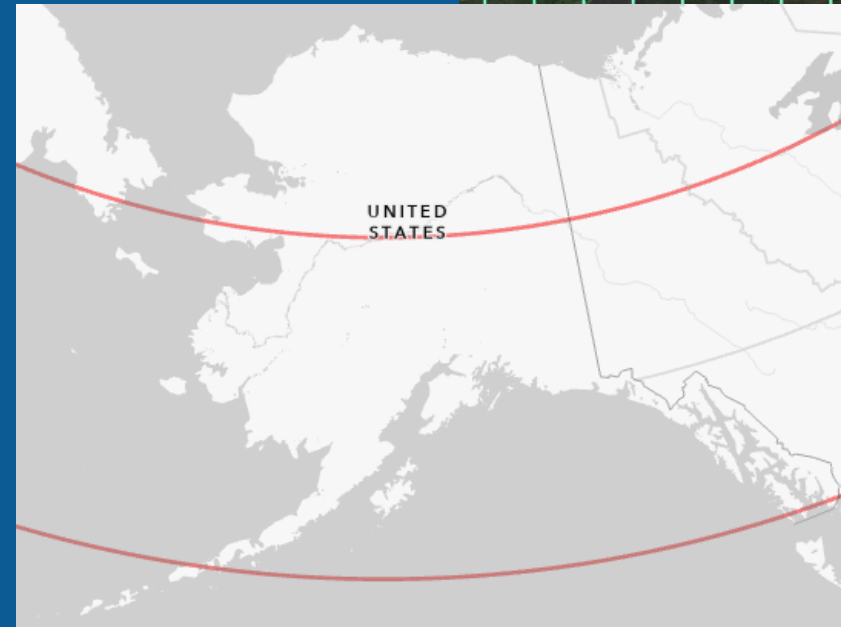
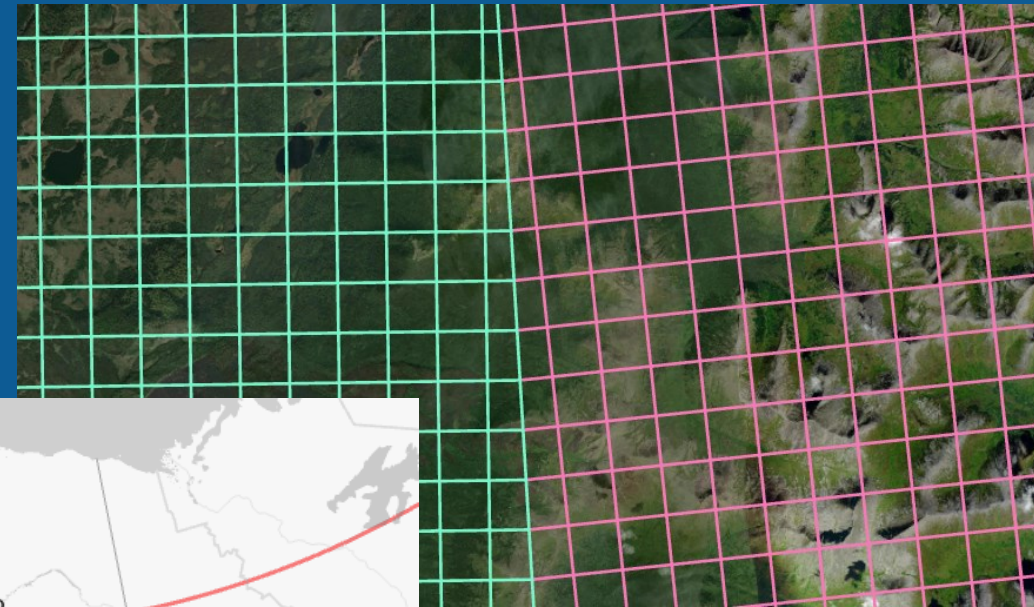
- Strategy for building toward statewide lidar coverage
- Tile size optimized for QL2 lidar (1500m)
  - Capacity to upscale for QL1 lidar (750m), and so forth





# AK Statewide Tile Index

- UTM grids can get messy at the margins
- Alaska Albers Projected
  - Consistent tile sizes
  - Compliments the state's shape (appropriate secant geometry)
- Index Documentation includes guidance for creating project deliverables and working with multiple spatial reference systems



# Questions



Thank You!

Contact: Andrew Herbst ([Andrew.herbst@nv5.com](mailto:Andrew.herbst@nv5.com))